

STATE OF ILLINOIS
DEPARTMENT OF TRANSPORTATION

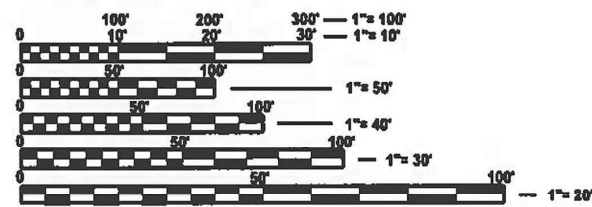
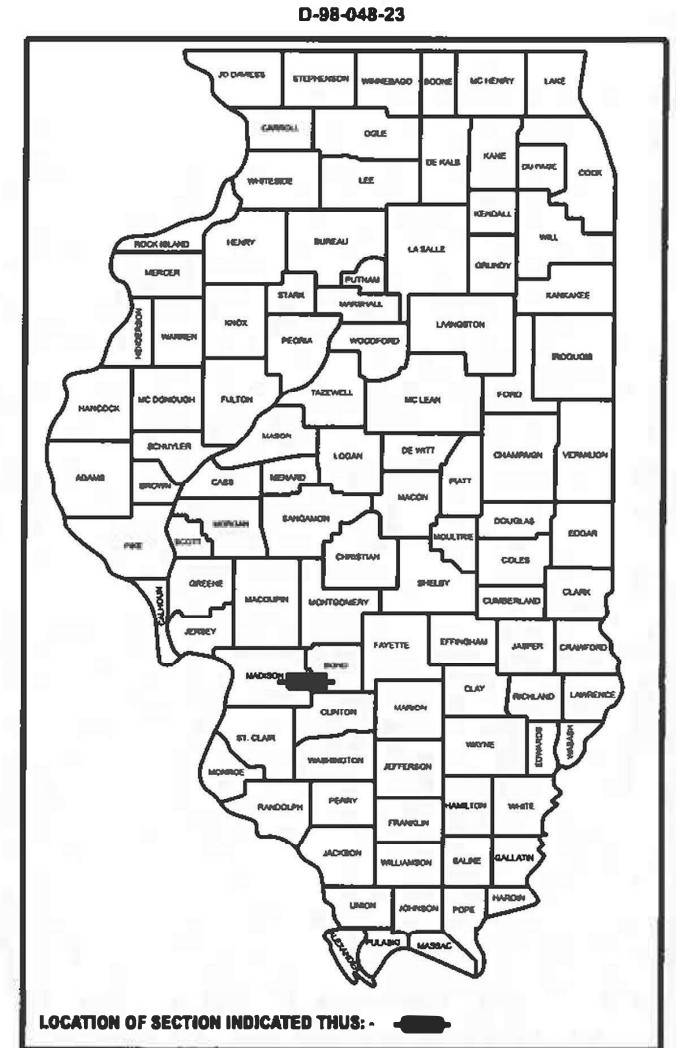
F.A.I. RTE.	SECTION	COUNTY	TOTAL SHEETS	SHEET NO.
70	(60-14, 60-15)Q, 3-4Q	MADISON/BOND	6	1
		ILLINOIS	CONTRACT NO. 76T27	

FOR INDEX OF SHEETS, SEE SHEET NO. 2

**PROPOSED
HIGHWAY PLANS**

**FAI 070 (FR 29.27/FR 29.26)
(SCHUSTER RD/FREYS MEADOW AVE)
SECTION (60-14, 60-15)Q, 3-4Q
BITUMINOUS SURFACE TREATMENT, A2
MADISON & BOND COUNTIES**

C-98-092-23

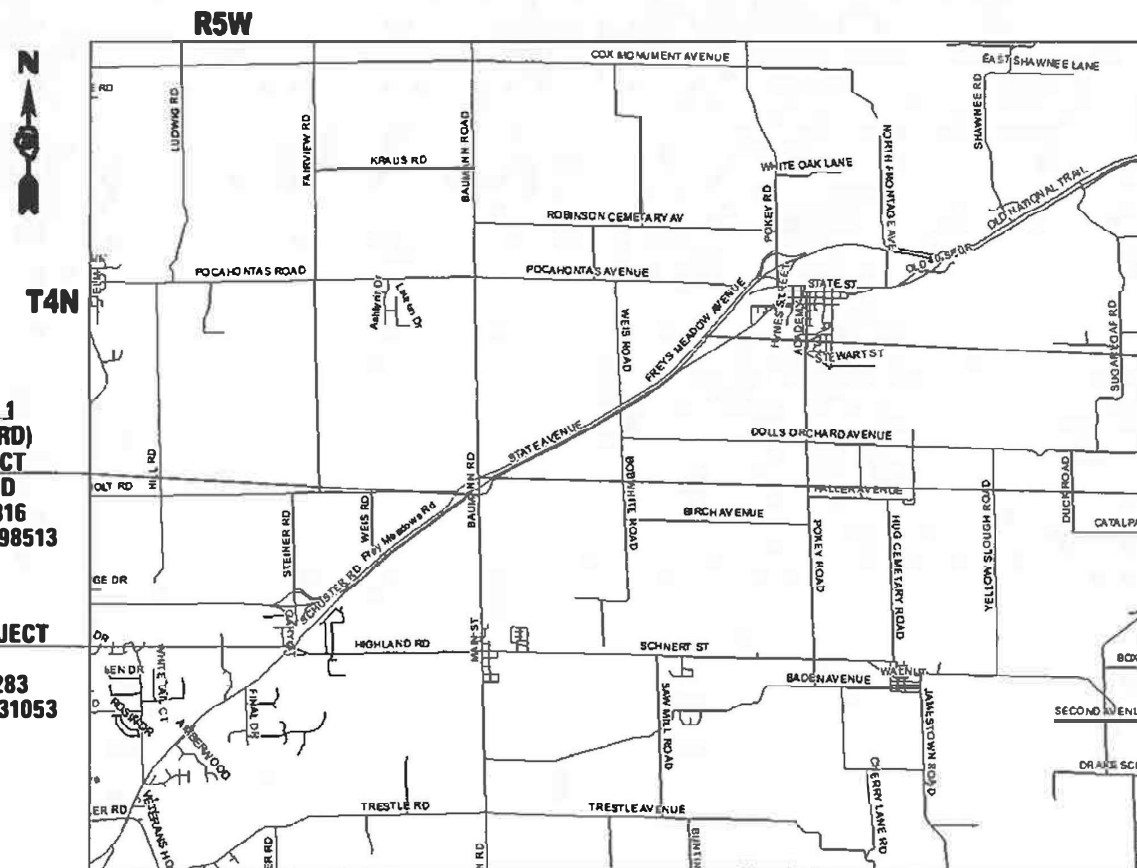


FULL SIZE PLANS HAVE BEEN PREPARED USING STANDARD ENGINEERING SCALES. REDUCED SIZED PLANS WILL NOT CONFORM TO STANDARD SCALES. IN MAKING MEASUREMENTS ON REDUCED PLANS, THE ABOVE SCALES MAY BE USED.

J.U.L.I.E.
JOINT UTILITY LOCATION INFORMATION FOR EXCAVATION
1-800-892-0123
OR 811

PROJECT ENGINEER: CHERYL KEPLAR
PROJECT MANAGER: JOHN GREEN

CONTRACT NO. 76T27



**LOCATION 1
(SCHUSTER RD)
END PROJECT
BAUMAN RD
LAT: 38.800816
LONG: -89.598513**

**BEGIN PROJECT
ILL 143
LAT: 38.780283
LONG: -89.631053**

**LOCATION 2
(FREYS MEADOW RD)
BEGIN PROJECT
1 MI W OF POKEY RD
LAT: 38.822343
LONG: -89.558479**

**END PROJECT
BAUMAN RD
LAT: 38.803242
LONG: -89.598589**

MAP NOT TO SCALE

LOCATION 1
GROSS LENGTH = 12091.2 FT. = 2.29 MILE
NET LENGTH = 12091.2 FT. = 2.29 MILE

GROSS LENGTH = 25819.2 FT. = 4.89 MILE
NET LENGTH = 25819.2 FT. = 4.89 MILE

LOCATION 2
GROSS LENGTH = 13728 FT. = 2.60 MILE
NET LENGTH = 13728 FT. = 2.60 MILE

STATE OF ILLINOIS
DEPARTMENT OF TRANSPORTATION

SUBMITTED December 21, 2023
David Brown
REGIONAL ENGINEER

February 2, 2024
Scott A. Etk
ENGINEER OF DESIGN AND ENVIRONMENT

February 2, 2024
Stephen M. Sullivan
DIRECTOR OF HIGHWAYS PROJECT IMPLEMENTATION

**PRINTED BY THE AUTHORITY
OF THE STATE OF ILLINOIS**

GENERAL NOTES

1. THE FOLLOWING UTILITIES HAVE FACILITIES WITHIN THE PROJECT AREA AND ARE AS FOLLOWS:

- ALHAMBRA-GRANTFORK TELEPHONE CO.
- AMEREN ILLINOIS
- AT&T ILLINOIS
- BLUEBIRD NETWORK
- BOND MADISON WATER COMPANY
- CHARTER COMMUNICATIONS, INC.
- CLEARWAVE FIBER LLC
- DEPARTMENT OF CENTRAL MANAGEMENT SERVICES
- FRONTIER COMMUNICATIONS
- VILLAGE OF GRANTFORK
- MARATHON PIPE LINE LLC
- PLAINES MARKETING, LP
- VILLAGE OF POCAHONTAS
- CITY OF HIGHLAND (COMMUNICATIONS)
- CITY OF HIGHLAND (ELECTRIC)
- CITY OF HIGHLAND (WATER & SANITARY SEWER)
- VILLAGE OF PIERRON
- SOUTHWESTERN ELECTRIC COOPERATIVE, INC
- TC ENERGY
- ZAYO GROUP LLC

- 2. THE RESIDENT ENGINEER SHALL VERIFY THE EXISTENCE OF HIGHWAY LIGHTING AND/OR INTELLIGENT TRANSPORTATIONS SYSTEMS (ITS). UTILITIES WITHIN THE PROJECT LIMITS. IF HIGHWAY LIGHTING AND/OR ITS EXISTS WITHIN THE PROJECT LIMITS, AND IF THESE ITEMS REQUIRE LOCATING, THE CONTRACTOR SHALL BE DIRECTED TO DO SO ACCORDING TO SECTION 803 OF THE STANDARD SPECIFICATIONS. THIS WORK SHALL BE PAID FOR ACCORDING TO ARTICLE 109.04 OF THE STANDARD SPECIFICATIONS.
- 3. NO SURVEY WAS PERFORMED FOR THIS PROJECT AND THE PLANS WERE CREATED USING MICROFILM AND FIELD MEASUREMENTS
- 4. ALL TURF AREAS DISTURBED BY THE CONTRACTOR SHALL BE SEEDED WITH THE APPROPRIATE EROSION CONTROL AS DIRECTED BY THE ENGINEER AT THE COST OF THE CONTRACTOR'S
- 5. THE DESIGNATED APPLICATION RATE FOR THE FOG SEAL IS 0.04LB/FT
- 6. THE CONTRACTOR SHALL USE CA-16 FOR THE SEAL AGGREGATE AND COVER AGGREGATE
- 7. THE DEPARTMENT STRONGLY ENCOURAGES THE PRIME CONTRACTOR AND THEIR APPROVED SUB-CONTRACTORS TO HIRE MINORITY, WOMEN, AND DISADVANTAGED INDIVIDUALS FROM ITS FEDERALLY FUNDED HIGHWAY CONSTRUCTION CAREERS TRAINING PROGRAM (HCCTP) TO HELP MEET WORKFORCE AND TRAINEE GOALS. THIS PROGRAM IS TRAINING MINORITIES, WOMEN AND DISADVANTAGED INDIVIDUALS IN HIGHWAY CONSTRUCTION-RELATED SKILLS, E.G., MATH FOR THE TRADES, JOB READINESS, TECHNICAL SKILLS COURSEWORK (CARPENTRY, CONCRETE FLATWORK, BLUEPRINT READING, SITE PLANS, SITE WORK, TOOLS USE, ETC.) AND OSHA 10 HOUR CERTIFICATION, TO PREPARE THEM FOR A CAREER IN THE HIGHWAY CONSTRUCTION TRADES GRADUATES ARE WELL-TRAINED AND READY TO BECOME PRODUCTIVE ENTRY-LEVEL CONSTRUCTION WORKERS. CONTACT THE DISTRICT 8 EEO OFFICE AT 618-346-3360 AND/OR THE HCCTP COORDINATOR AT 618-874-6528 TO LEARN MORE ABOUT THE PROGRAM AND FOR ASSISTANCE IN MEETING WORKFORCE AND TRAINEE GOALS.

INDEX OF SHEETS

- 1. COVER SHEET
- 2. INDEX OF SHEETS, HIGHWAY STANDARDS, GENERAL NOTES, ADT, AND COMMITMENTS
- 3. SUMMARY OF QUANTITIES
- 4. TYPICAL SECTION
- 6. SCHEDULE OF QUANTITIES

HIGHWAY STANDARDS

- 000001-08 STANDARD SYMBOLS ABBREVIATIONS & PATTERNS
- 001006 DECIMAL OF INCH & FOOT
- 701301-04 LANE CLOSURE, 2L, 2W, SHORT TIME OPERATIONS
- 701306-04 LANE CLOSURE 2 LANE 2 WAY SLOW MOVING OPERATION, DAY ONLY 45MPH OR MORE
- 701311-03 LANE CLOSURE, 2L, 2W, MOVING OPERATIONS - DAY ONLY
- 701901-09 TRAFFIC CONTROL DEVICES

ADT

LOCATION 1

IL 143 TO BAUMAN RD
 2021 ADT = 100 (ACTUAL)
 2024 ADT = 100 (ESTIMATED)
 2044 ADT = 125 (ESTIMATED)
 SU = 5.0% MU = 1.0%

LOCATION 2

BAUMAN RD TO 1 MILE W OF POKEY RD
 2020 ADT = 325 (ACTUAL)
 2024 ADT = 325 (ESTIMATED)
 2044 ADT = 375 (ESTIMATED)
 SU = 2.0% MU = 0.7%

COMMITMENTS

NO COMMITMENTS

REV. - MS

L:\Unlabeled\Sheet\...
 5/2/2022 10:45:00 AM

USER NAME = John P. Green	DESIGNED -	REVISED -	STATE OF ILLINOIS DEPARTMENT OF TRANSPORTATION	INDEX OF SHEETS, HIGHWAY STANDARDS GENERAL NOTES, ADT, AND COMMITMENTS		F.A.I. RTE.	SECTION	COUNTY	TOTAL SHEETS	SHEET NO.
PLOT SCALE = 0.18888833" / in.	DRAWN -	REVISED -				70	(60-14,60-15)0, 3-40	MADISON/BOND	6	2
PLOT DATE = 12/20/2022	CHECKED -	REVISED -		SCALE: SHEET OF SHEETS STA. TO STA.		CONTRACT NO. 76T27				
					ILLINOIS I-55/60 PROJECT					

CODE NO.	ITEM	UNIT	TOTAL QUANTITY	100% STATE	
				CONSTR. CODE	CONSTR. CODE
				LOCATION 1 (MADISON)	LOCATION 2 (BOND)
				ROADWAY	ROADWAY
				0005	0005
				RURAL	RURAL
67100100	MOBILIZATION	L SUM	1	0.5	0.5
70100460	TRAFFIC CONTROL AND PROTECTION, STANDARD 701306	L SUM	1	0.5	0.5
X1500005	BITUMINOUS SURFACE TREATMENT, A2	SQ YD	64639	29556	35083
X4060107	BITUMINOUS MATERIALS (FOG SEAL)	POUND	23270	10640	12630

MODEL: 500 (Sheet)
FILE NAME: p:\7607627\dot\document\DOT Office\District B\ORD Project\081717\CAD\table\Quantity\081717_4.r.500

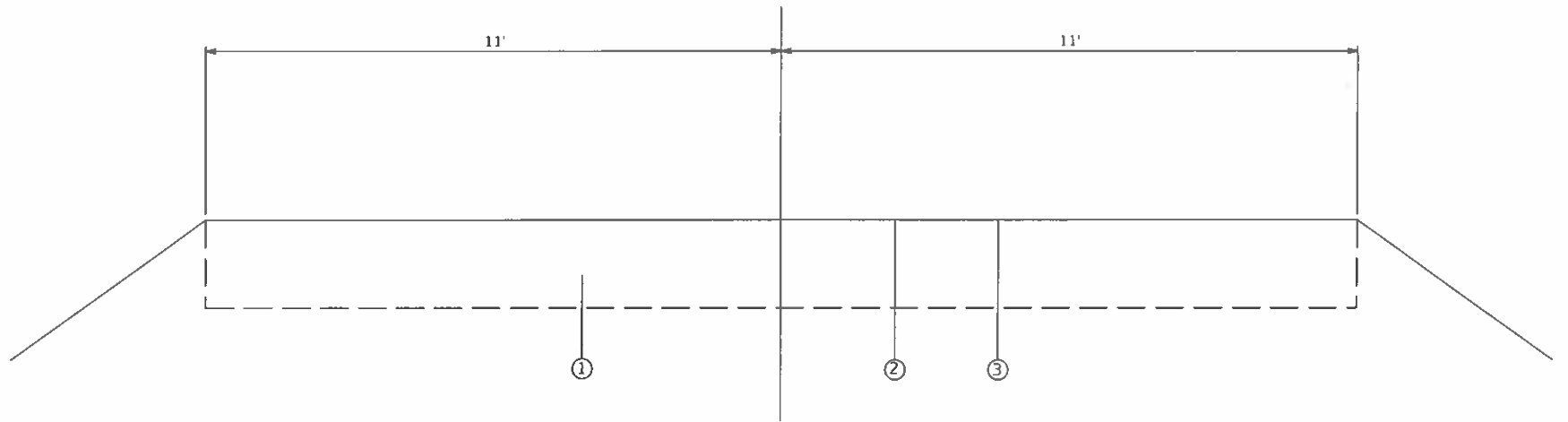
USER NAME * John P. Green	DESIGNED -	REVISED -
	DRAWN -	REVISED -
PLOT SCALE * 0.1888833 / in	CHECKED -	REVISED -
PLOT DATE * 12/20/2023	DATE *	REVISED -

**STATE OF ILLINOIS
DEPARTMENT OF TRANSPORTATION**

SUMMARY OF QUANTITIES

SCALE: SHEET OF SHEETS STA. TO STA.

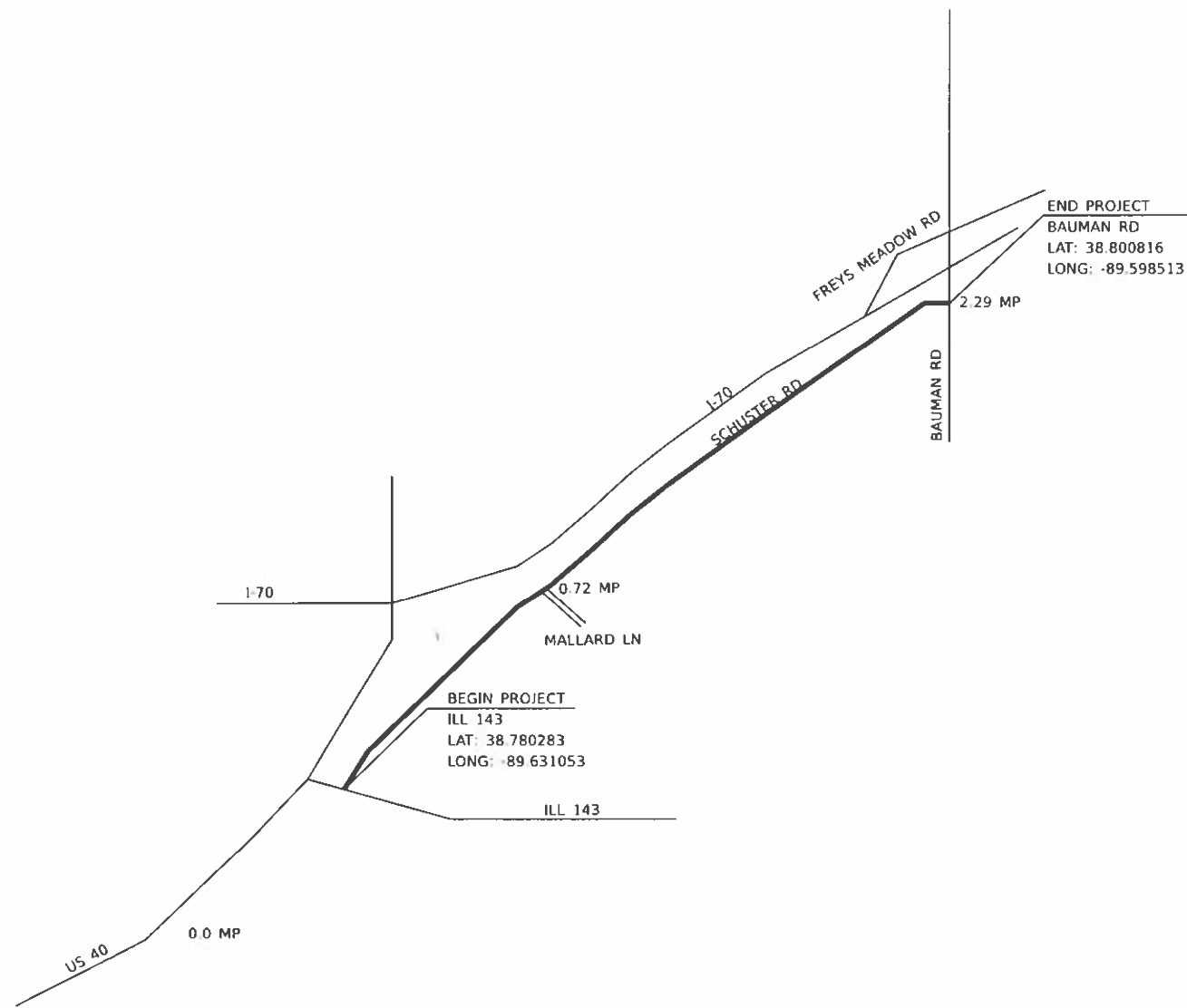
F.A.I. RTE.	SECTION	COUNTY	TOTAL SHEETS	SHEET NO.
70	(60-14, 60-15)Q, 3-4Q	MADISON/BOND	6	3
CONTRACT NO. 76727				
ILLINOIS FED AID PROJECT				



TYPICAL SECTION
MS 0.00 to MS 2.29

LEGEND

- ① EXISTING PAVEMENT (UNKNOWN PAVEMENT TYPE)
- ② PROPOSED BITUMINOUS SURFACE TREATMENT, A2
- ③ PROPOSED FOG SEAL TREATMENT



MODEL: TYPICAL SHEET (Sheet)
FILE NAME: c:\pwworkspace\john.p.green@illinois.gov\0886790\0876127-ant-typical.dgn

USER NAME * John.P.Green	DESIGNED -	REVISED -
	DRAWN -	REVISED -
PLOT SCALE * 0.1866633 1/8"	CHECKED -	REVISED -
PLOT DATE * 12/20/2023	DATE -	REVISED -

STATE OF ILLINOIS
DEPARTMENT OF TRANSPORTATION

LOCATION 1 PLAN	
SCHUSTER RD	
SCALE NOT TO SCALE	SHEET OF SHEETS STA TO STA.

F.A.I. RTE.	SECTION	COUNTY	TOTAL SHEETS	SHEET NO.
70	(60-14, 60-15)Q, 3-4Q	MADISON/BOND	6	4
CONTRACT NO. 76T27				
ILLINOIS FED AID PROJECT				

RESURFACING SCHEDULE

LOCATION 1 - SCHUSTER RD

MILE POINT	WIDTH (FT)	BITUMINOUS SURFACE TREATMENT, A2 (SQ YD)	BITUMINOUS FOG SEAL (LBS)
MP 0.00 TO 0.16	22	2065	743
MP 0.16 TO 0.68	22	6711	2416
MP 0.68 TO 2.29	22	20780	7481
TOTALS		29,556	10,640

LOCATION 2 - FREYS MEADOW RD

MILE POINT	WIDTH (FT)	BITUMINOUS SURFACE TREATMENT, A2 (SQ YD)	BITUMINOUS FOG SEAL (LBS)
MP 0.00 TO 0.16	23	2159	777
MP 0.16 TO 0.68	23	7017	2526
MP 0.68 TO 1.35	23	9041	3255
MP 1.35 TO 2.60	23	16867	6072
TOTALS		35,083	12,630

MODEL: Pavement Marking Schedule (RHW)
 FILE NAME: p:\r\110429_bentley.com\PROJECTS\DOT\Documents\DOT\Office\Marked\ICRD\Project\DOT\1277\CAD\Drawings\DOT\1277_414.sch\14

USER NAME * John P. Green	DESIGNED -	REVISED -
	DRAWN -	REVISED -
PLOT SCALE * 0.10000033 / in.	CHECKED -	REVISED -
PLOT DATE * 12/20/2023	DATE -	REVISED -

**STATE OF ILLINOIS
DEPARTMENT OF TRANSPORTATION**

SCHEDULE OF QUANTITY

SCALE: SHEET OF SHEETS STA. TO STA.

F.A.I. RTE.	SECTION	COUNTY	TOTAL SHEETS	SHEET NO.
70	(60-14,60-15)Q, 3-4Q	MADISON/BOND	6	6
CONTRACT NO. 76T27				
ILLINOIS FED AID PROJECT				