

ROUTE	SECTION	COUNTY	TOTAL SHEETS	SHEET NUMBER
FAP 348	3128-Z-HB-1-I	COOK	16	2

CONTRACT NO. 60B25

INDEX OF SHEETS

<u>SHEET NO</u>	<u>DESCRIPTION</u>
1	TITLE SHEET
2	INDEX OF SHEETS, STATE STANDARDS, & GENERAL NOTES
3	SUMMARY OF QUANTITIES
4	TRAFFIC STAGING
5 - 15	BRIDGE REPAIR DETAILS
16	TRAFFIC CONTROL DETAILS FOR FREEWAY SHOULDER CLOSURES PARTIAL RAMP CLOSURES

STATE STANDARDS

<u>STANDARD NO</u>	<u>DESCRIPTION</u>
701301-02	LANE CLOSURE, 2L, 2W, SHORT TIME OPERATIONS
701501-03	URBAN LANE CLOSURE, 2L, 2W, UNDIVIDED
702001-06	TRAFFIC CONTROL DEVICES

EXISTING MIN. VERTICAL CLEARANCE (RICHARDS RD.) = 18' - 10 3/8"

GENERAL NOTES

BEFORE STARTING ANY EXCAVATION, THE CONTRACTOR SHALL CALL "JULIE." (JOINT UTILITY LOCATION INFORMATION FOR EXCAVATION) AT (800) 892-0123 FOR FIELD LOCATIONS OF BURIED ELECTRIC, TELEPHONE AND GAS UTILITIES. (48 HOUR NOTIFICATION IS REQUIRED).

DO NOT SCALE PLANS FOR CONSTRUCTION DIMENSIONS

THE CONTRACTOR WILL NOT BE ALLOWED TO SET UP A YARD OR FIELD OFFICE ON STATE OR TOLLWAY PROPERTY WITHOUT WRITTEN PERMISSION FROM THE DEPARTMENT.

THE CONTRACTOR SHALL CONTACT THE DISTRICT ONE TRAFFIC CONTROL SUPERVISOR AT (847) 705-4470 A MINIMUM OF 72 HOURS IN ADVANCE OF BEGINNING WORKS.

THESE PLANS HAVE BEEN PREPARED FROM NOTES RECEIVED FROM BRIDGE INSPECTORS.

PLAN DIMENSIONS AND DETAILS RELATIVE TO EXISTING PLANS ARE SUBJECT TO ROUTINE VARIATIONS. THE CONTRACTOR SHALL FIELD VERIFY EXISTING DIMENSIONS AND DETAILS AFFECTING NEW CONSTRUCTION AND MAKE NECESSARY APPROVED ADJUSTMENTS PRIOR TO CONSTRUCTION OR ORDERING OF MATERIALS. SUCH VARIATIONS SHALL NOT BE CAUSE FOR ADDITIONAL COMPENSATION FOR A CHANGE IN SCOPE OF THE WORK, HOWEVER, THE CONTRACTOR WILL BE PAID FOR THE QUANTITY ACTUALLY FURNISHED BASED UPON THE UNIT PRICE BID FOR THE WORK.

THE CONTRACTOR SHALL BE REQUIRED TO PROVIDE ACCESS TO ABUTTING PROPERTY AT ALL TIMES DURING THE CONSTRUCTION OF THIS PROJECT.

ILLINOIS DEPARTMENT OF TRANSPORTATION

INDEX OF SHEETS
STATE STANDARDS
GENERAL NOTES

SUMMARY OF QUANTITIES

16ROUTE	SECTION	COUNTY	TOTAL SHEETS	SHEET NUMBER
FAP 348	3128-Z-HB-1-I	COOK	16	3

CONSTRUCTION TYPE CODE SFTY-2A

CONTRACT: 60B25

URBAN-100/STATE

CODE NO.	DESCRIPTION	UNIT	TOTAL QUANTITIES
58700300	CONCRETE SEALER	SQ FT	7155
67000400	ENGINEER'S FIELD OFFICE, TYPE A	CAL MO	1
67100100	MOBILIZATION	L SUM	1
70101800	TRAFFIC CONTROL AND PROTECTION (SPECIAL)	L SUM	1
70102620	TRAFFIC CONTROL AND PROTECTION, STANDARD 701501	L SUM	1
X0320887	POLYMER CONCRETE	CU FT	15.5
X0321744	SILICONE JOINT SEALER, 2"	FOOT	148
X0322467	TEMPORARY INFORMATION SIGNING FOR LANE CLOSURE	SQ FT	24
X0323076	SILICONE JOINT SEALER, 1 3/4"	FOOT	112
X0325303	STRUCTURAL REPAIR OF CONCRETE (DEPTH GREATER THAN 5 INCHES)	SQ FT	79
X0325305	STRUCTURAL REPAIR OF CONCRETE (DEPTH EQUAL TO OR LESS THAN 5 INCHES)	SQ FT	1160
Z0001700	APPROACH SLAB REPAIR (FULL DEPTH)	SQ YD	6
Z0048665	RAILROAD PROTECTIVE LIABILITY INSURANCE	L SUM	1
Z0073200	TEMPORARY SHORING AND CRIBBING	EACH	8

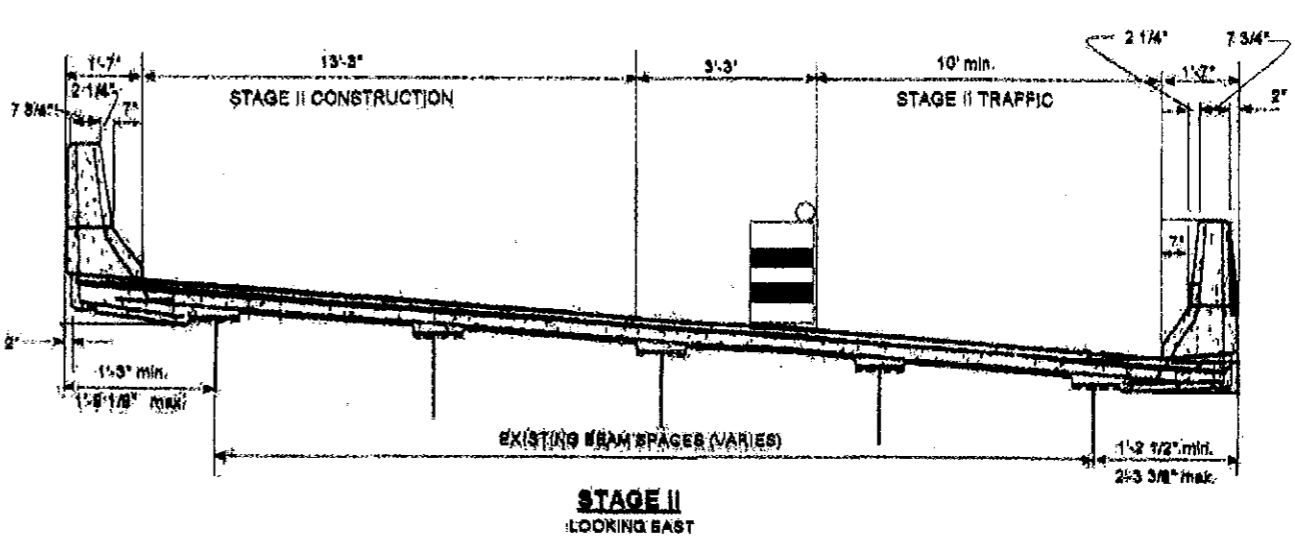
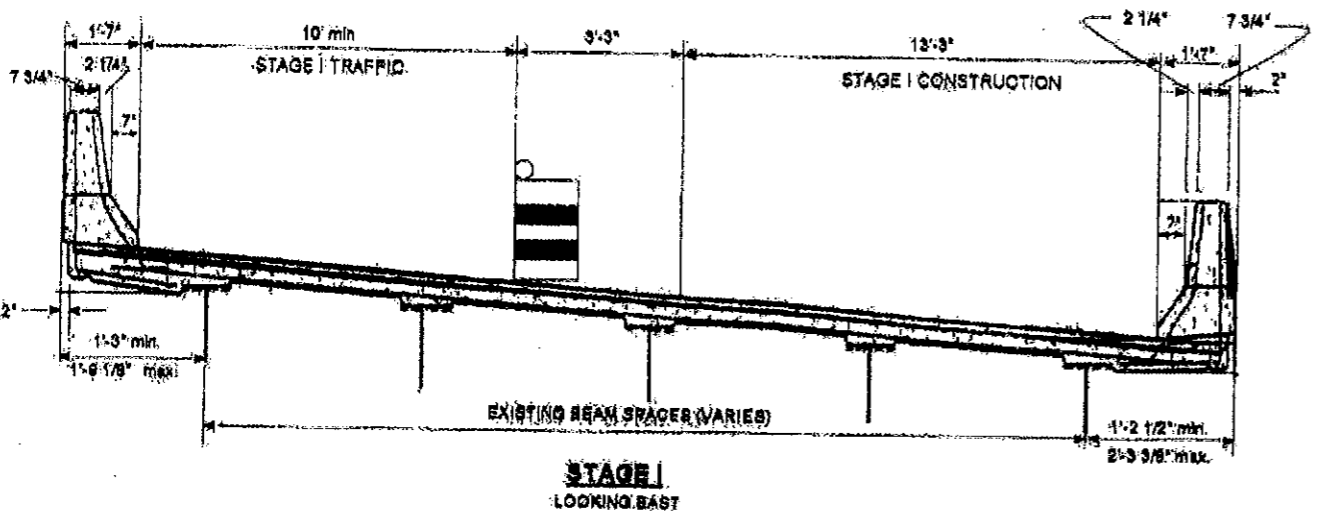
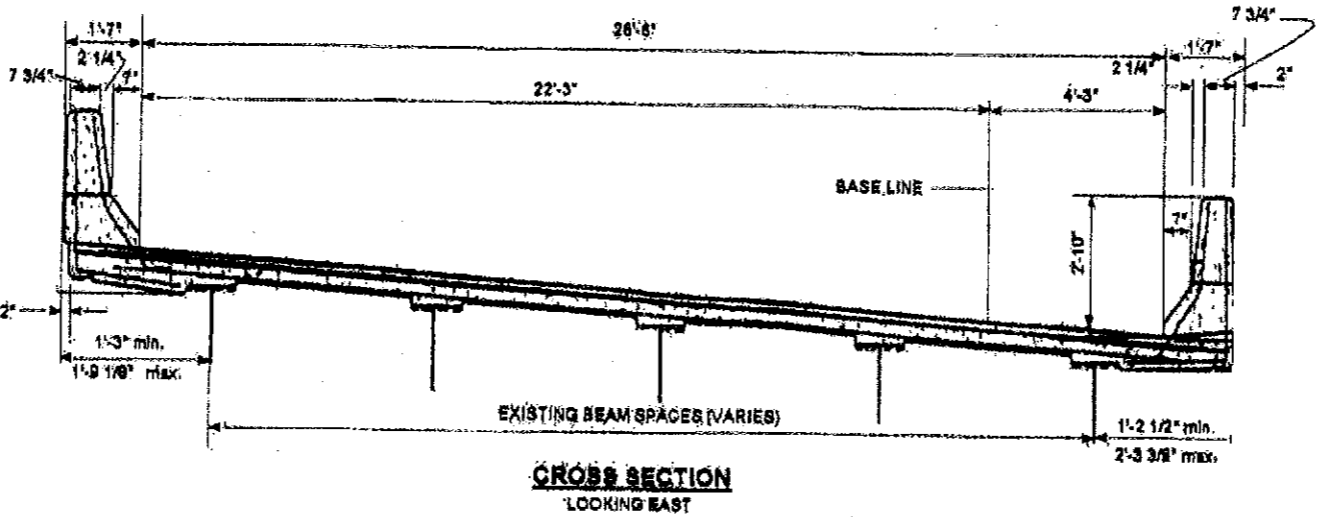
ILLINOIS DEPARTMENT OF TRANSPORTATION

SUMMARY OF QUANTITIES

Rev.

ROUTE	SECTION	COUNTY	TOTAL SHEETS	SHEET NUMBER
FAP 348	3128-Z-HB-1-I	COOK	16	4

CONTRACT No. 60B25



DRUMS SHALL BE SPACED AS SHOWN IN THE "PARTIAL RAMP CLOSURE DETAILS" ON THE DISTRICT "TRAFFIC CONTROL DETAILS FOR FREEWAY SHOULDER CLOSURES & PARTIAL RAMP CLOSURES".

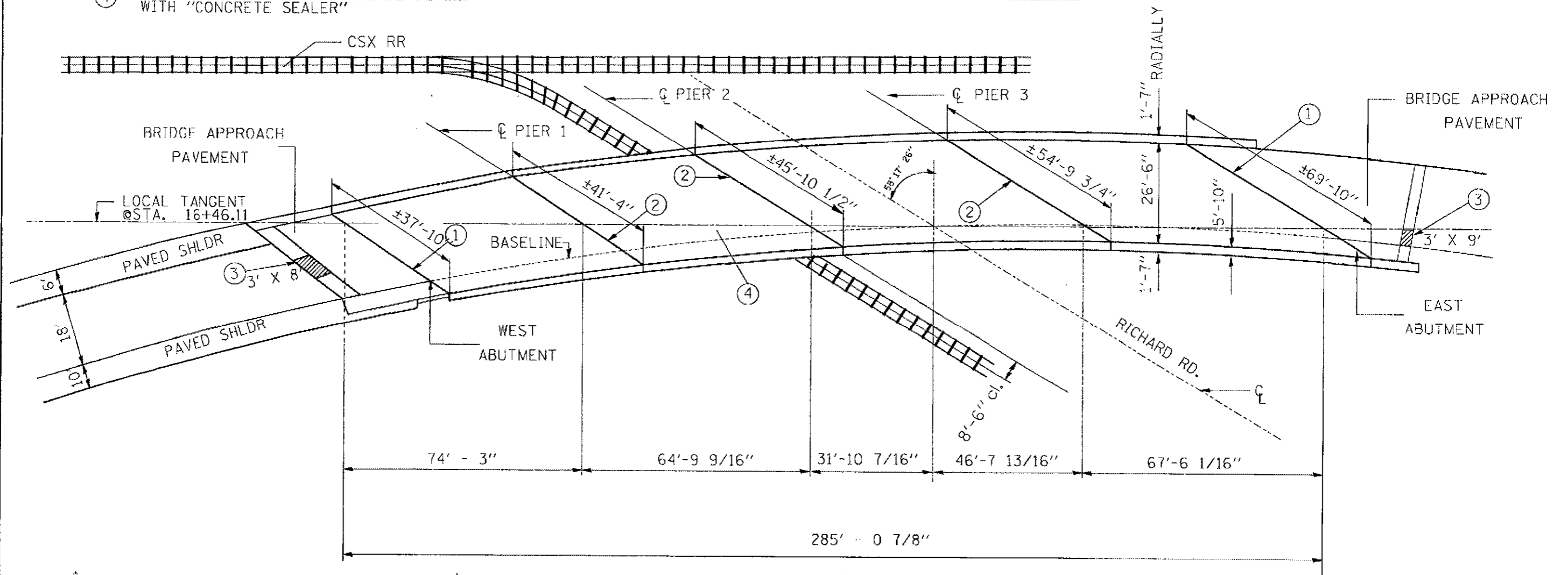
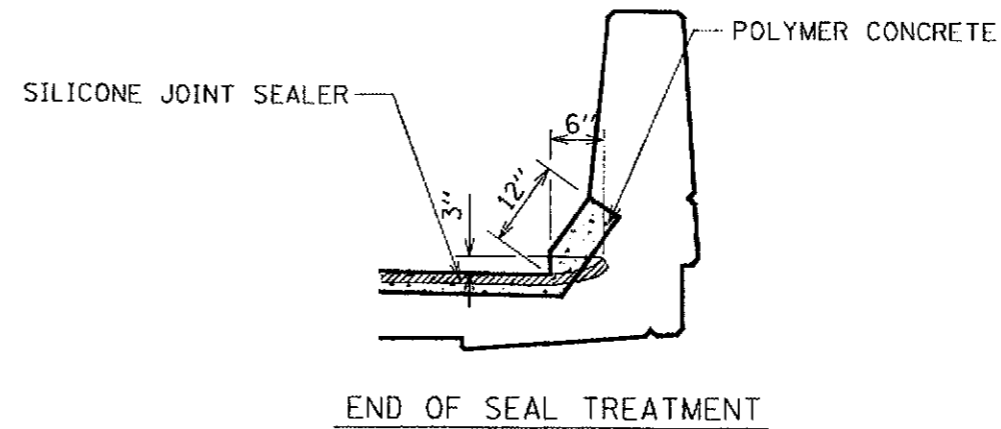
BASES OF PAYMENT. THIS WORK WILL BE PAID FOR AT THE CONTRACT UNIT PRICE LUMP SUM FOR "TRAFFIC CONTROL & PROTECTION (SPECIAL)"

ILLINOIS DEPARTMENT OF
TRANSPORTATION

TRAFFIC STAGING
EB 95TH ST RAMP SB TO IL 43 (HARLEM AVE)
SN 016-1010

F.A. RY.	SECTION	COUNTY	TOTAL SHEETS	SHEET NO.
-	-	-	16	5
STA.		TO STA.		
FED. ROAD DIST. NO.		ILLINOIS FED. AID PROJECT		

- ① EXISTING PJS 2 1/2"
REPLACE W/SJS 1 3/4"
see DETAIL A (SHEET 2 OF 11)
- ② EXISTING NEOPRENE 2"
REPLACE W/SJS 2" AND
POLYMER CONCRETE
see DETAIL B (SHEET 2 OF 11)
- ③ APPROACH SLAB REPAIR (FULL DEPTH)
TO APPROACH PAVEMENT RELIEF JOINT.
ALSO RESEAL RELIEF JOINT FULL WIDTH.
COST OF ALL MATERIALS SHOWN TO REPAIR
RELIEF JOINT ARE INCLUDED IN THE COST OF
"APPROACH SLAB REPAIR (FD)" (SEE SHEET 11 OF 11)
- ④ ENTIRE DECK SURFACE SHALL BE SEALED
WITH "CONCRETE SEALER"



285
216

PLAN

REVISIONS	
NAME	DATE

ILLINOIS DEPARTMENT OF TRANSPORTATION
BRIDGE REPAIR DETAILS
GENERAL PLAN

SN# 016-1010

SCALE: VERT. _____
HORIZ. _____

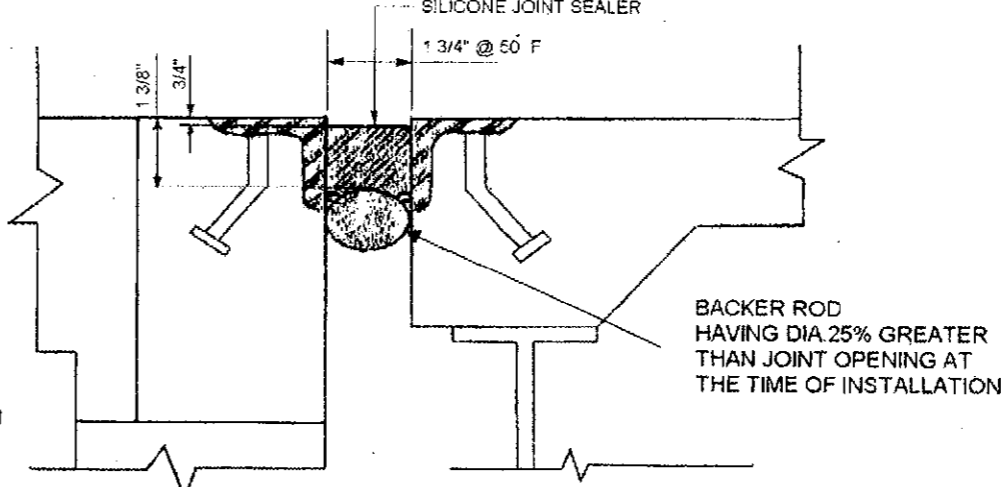
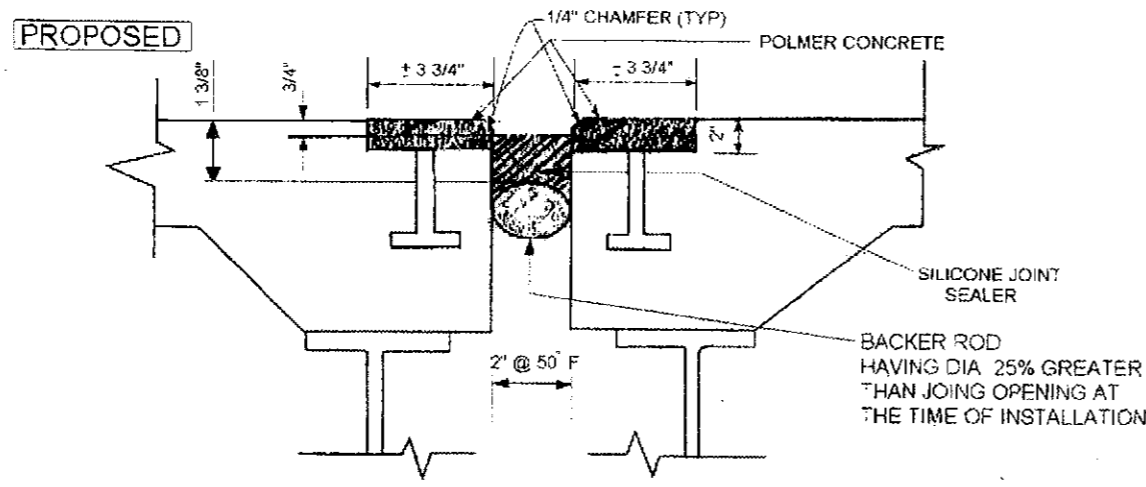
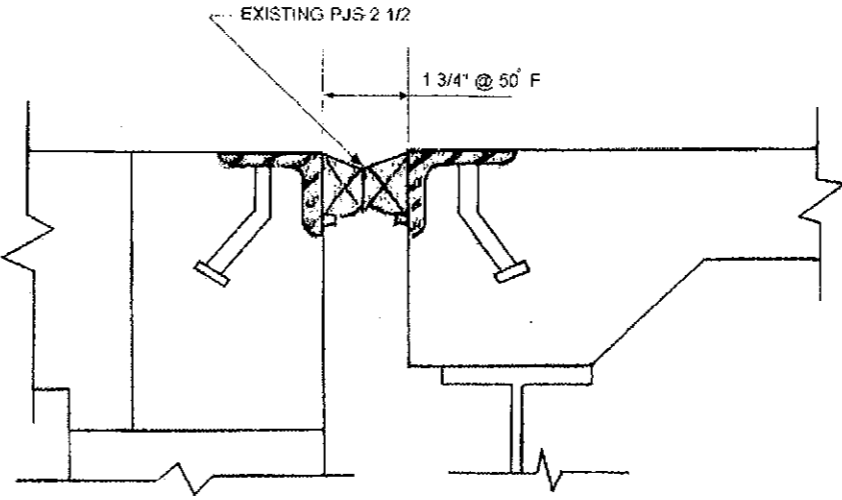
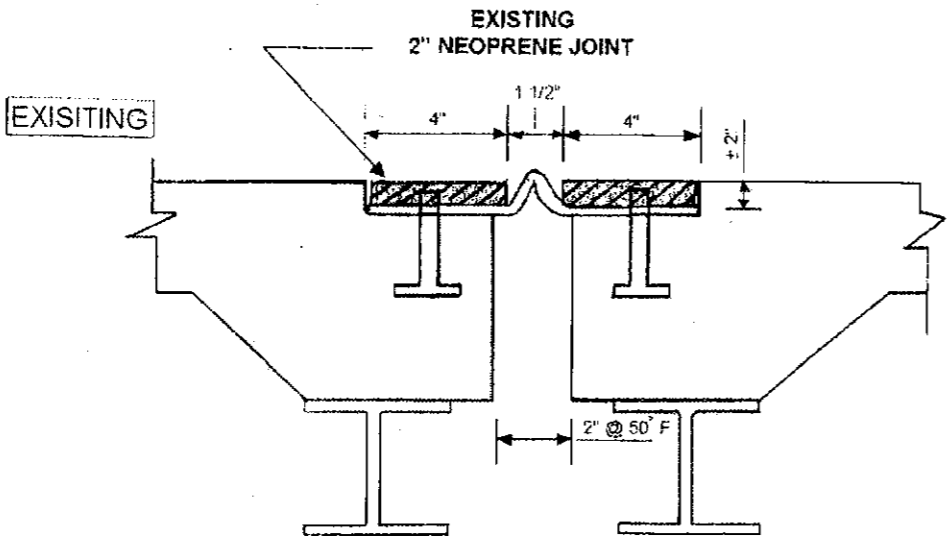
DATE _____

DRAWN BY _____
CHECKED BY _____

PLT DATE: 4/27/2007
FILE NAME: d:\projects\132706\132706aa.dgn
PLOT SCALE: 1"=10'-0"
USER NAME: mchamber

ROUTE	SECTION	COUNTY	TOTAL SHEETS	SHEET NUMBER
FAP 348	3128-Z-HB-1-I	COOK	16	6

CONTRACT No. 60B25



DETAIL B
PIERS 1,2,3

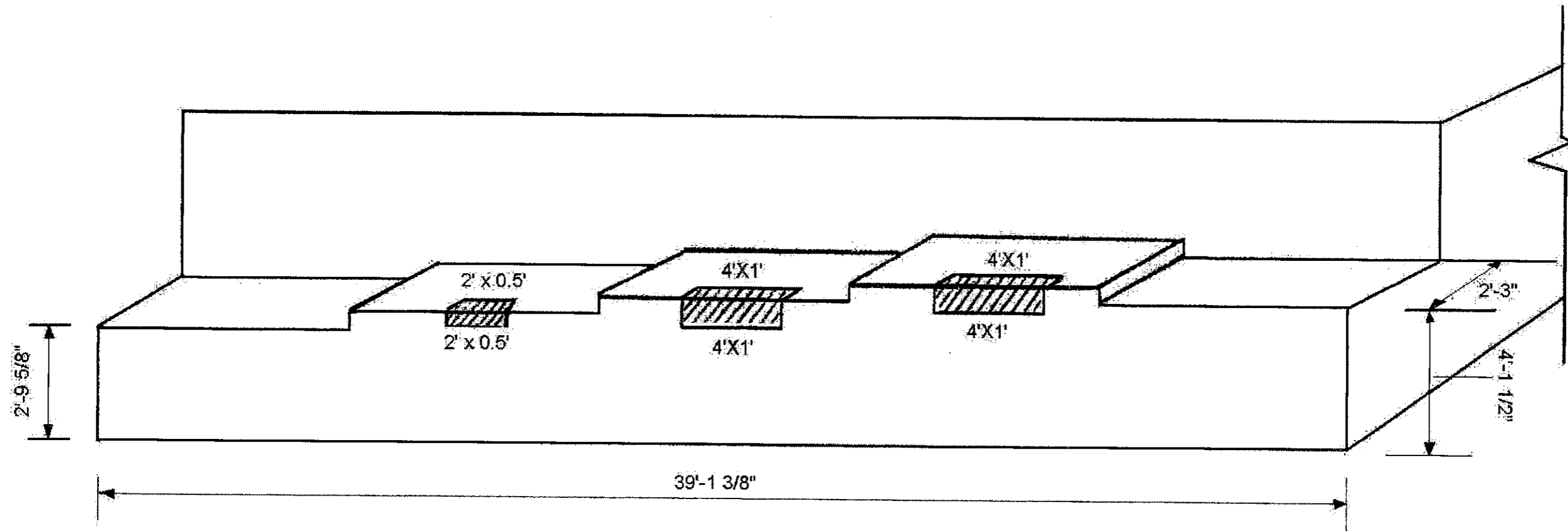
DETAIL A
E & W ABUTMENT

ILLINOIS DEPARTMENT OF
TRANSPORTATION
EB 95TH ST RAMP SB TO IL 43 (HARLEM AVE)
SN 016-1010
BRIDGE REPAIR DETAILS

ROUTE	SECTION	COUNTY	TOTAL SHEETS	SHEET NUMBER
FAP 348	3128-Z-HB-1-I	COOK	16	7

CONTRACT No. 60B25

3 OF 11



WEST ABUTMENT
(LOOKING WEST)



— STRUCTURAL REPAIR OF CONCRETE ($\leq 5"$), 46 SQ. FT.

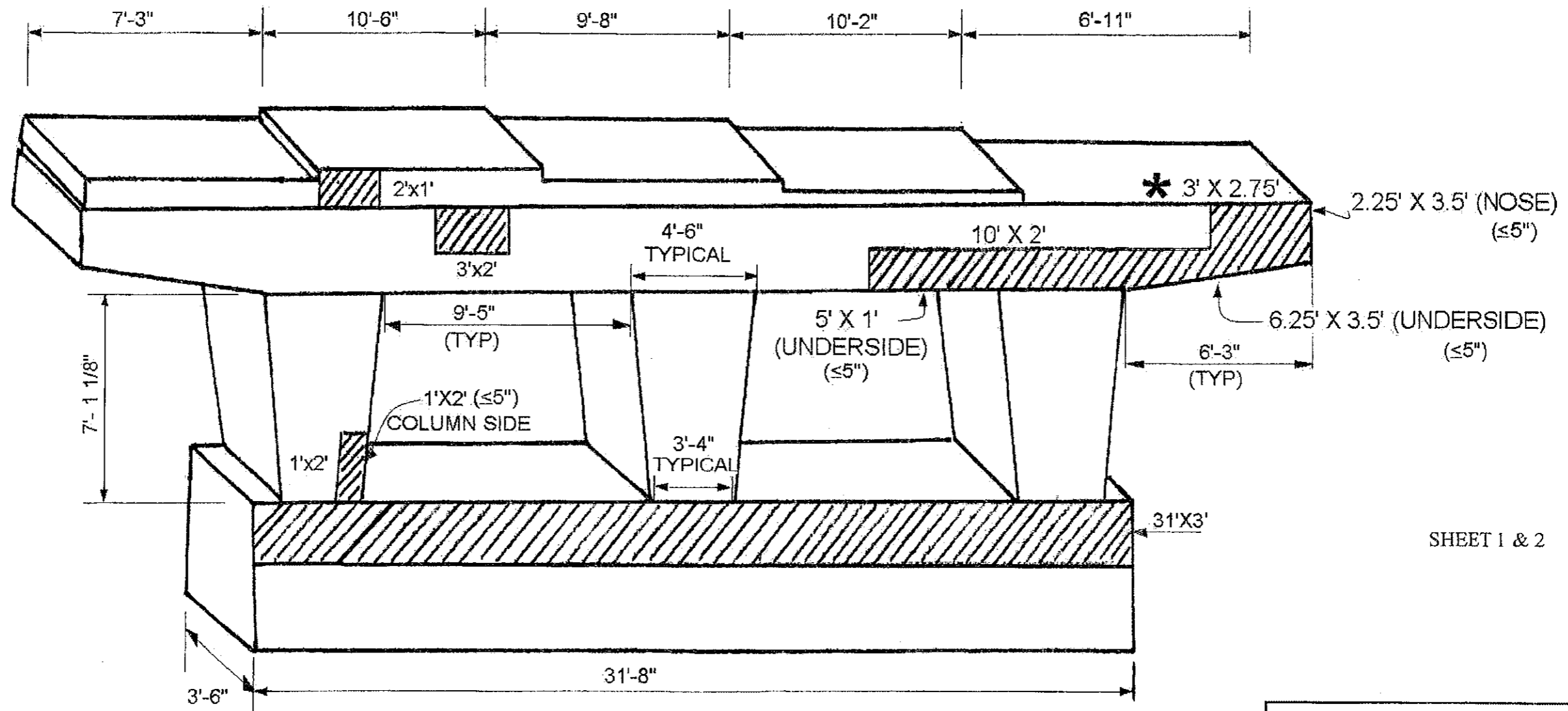
ILLINOIS DEPARTMENT OF
TRANSPORTATION

WEST ABUTMENT
EB 95TH ST RAMP SB TO IL 43 (HARLEM AVE)
SN 016-1010
STRUCTURAL PLAN

ROUTE	SECTION	COUNTY	TOTAL SHEETS	SHEET NUMBER
FAP 348	3128-Z-HB-1-I	COOK	16	8

CONTRACT No. 60B25

4 OF 11



PIER 1 WEST FACE
(LOOKING EAST)

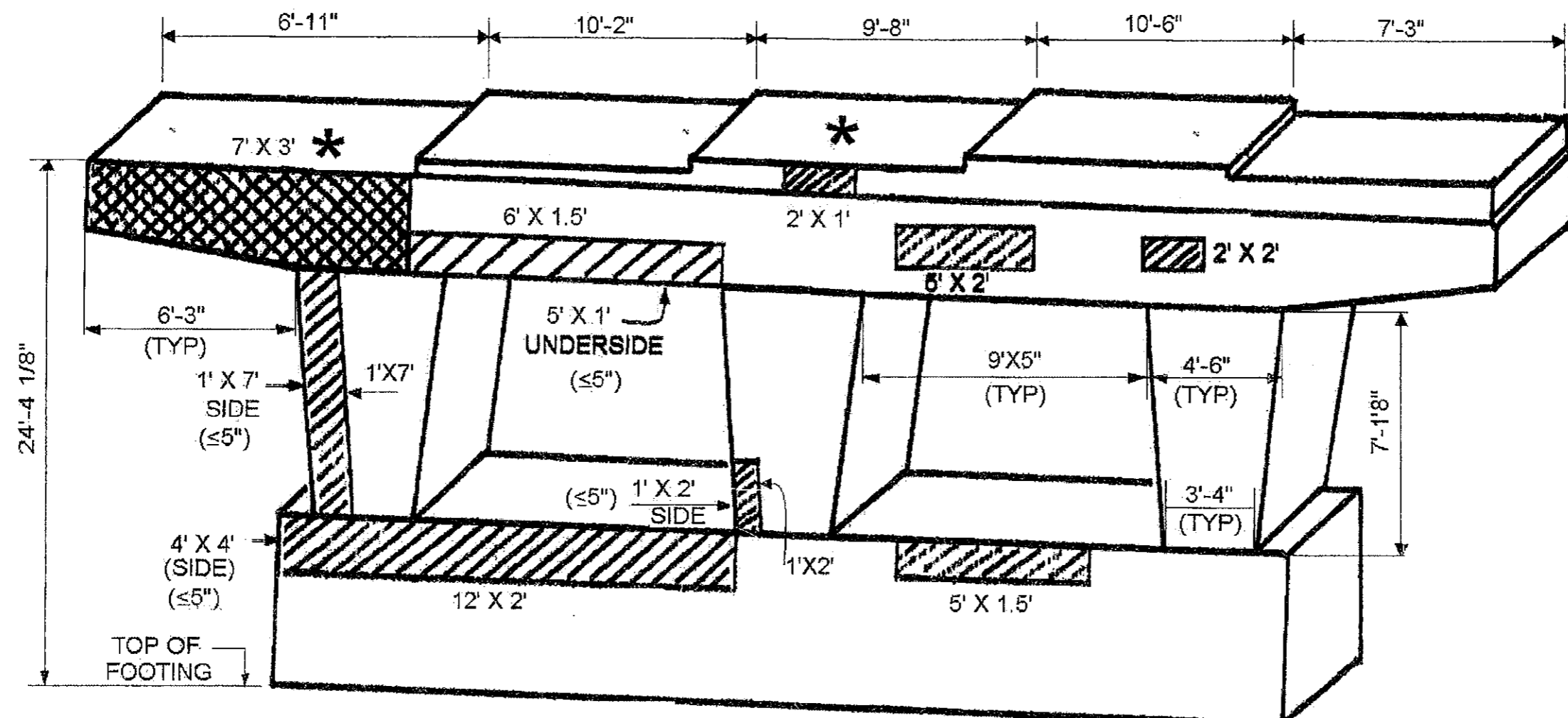
FOR QUANTITIES SEE SHEET 5 OF 11

ILLINOIS DEPARTMENT OF
TRANSPORTATION




PIER 1 WEST FACE
EB 95TH ST RAMP SB TO IL 43 (HARLEM AVE)
SN 016-1010
STRUCTURAL PLAN

ROUTE	SECTION	COUNTY	TOTAL SHEETS	SHEET NUMBER
FAP 348	3128-Z-HB-1-I	COOK	16	9

CONTRACT No. 60B25
5 OF 11



PIER 1 BILL OF MATERIALS

-  - STRUCTURAL REPAIR OF CONCRETE (≤5"), WEST FACE: 169 SQ. FT. EAST FACE: 96 SQ. FT. TOTAL 265 SQ. FT.
-  - STRUCTURAL REPAIR OF CONCRETE (>5"), 21 SQ. FT.
-  - BEAM END SUPPORT REQ. BEAM 1 (E & W) & 3 (E FACE) TEMPORARY SHORING & CRIBBING - EACH - 3

PIER 1 EAST FACE (LOOKING WEST)

	REACTIONS	
	SPAN 1	SPAN 2
R DL (K)	32.1	31.2
R LL (K)	36.5	37.5
R IMP (K)	10.1	10.6
R (TOTAL)	78.7	79.3

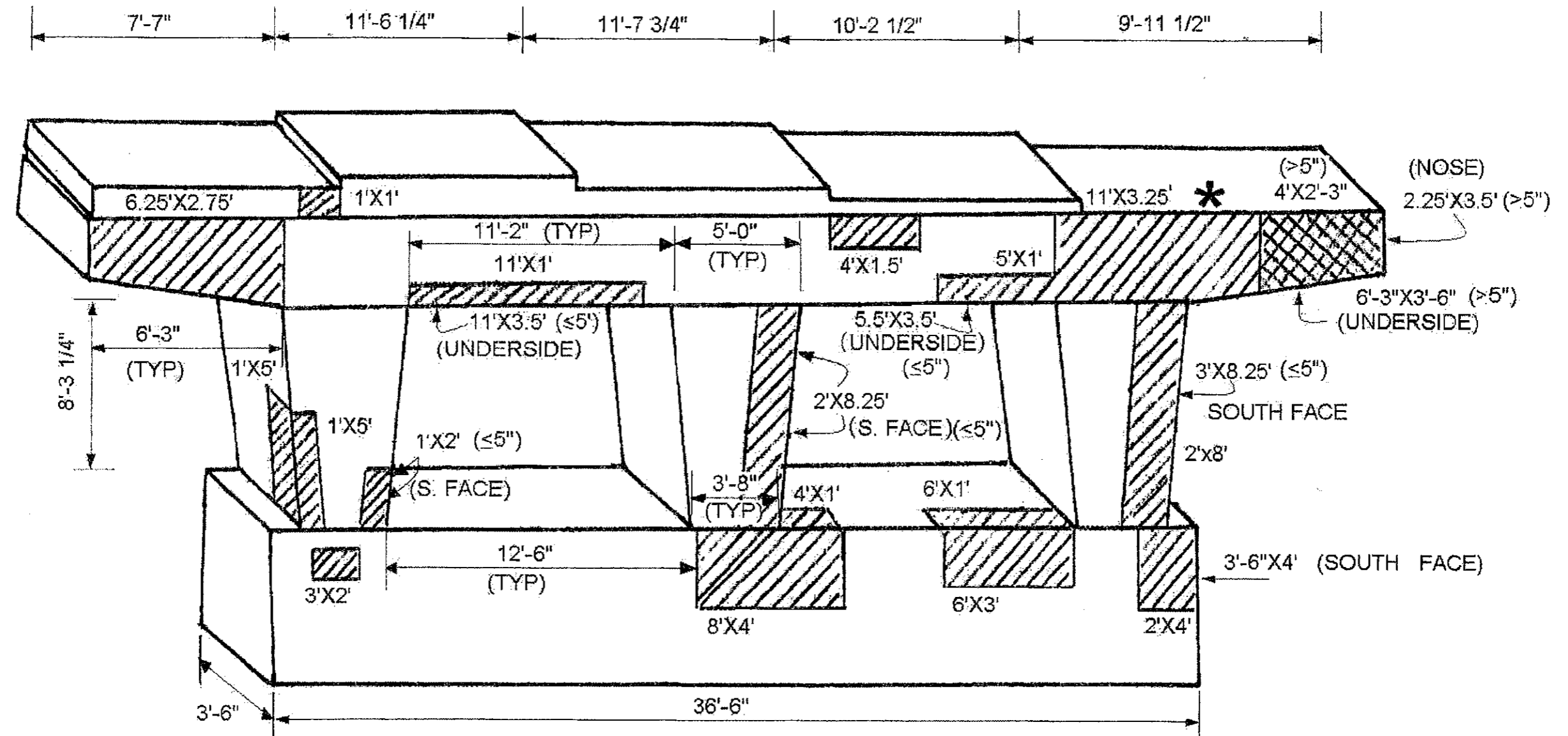
SHEET 2 & 2

ILLINOIS DEPARTMENT OF TRANSPORTATION
PIER 1 EAST FACE
EB 95TH ST RAMP SB TO IL 43 (HARLEM AVE)
SN 016-1010
STRUCTURAL PLAN

ROUTE	SECTION	COUNTY	TOTAL SHEETS	SHEET NUMBER
FAP 348	3128-Z-HB-1-I	COOK	16	10

CONTRACT No. 60B25

6 OF 11



PIER 2 WEST FACE
(LOOKING EAST)

SHEET 1 OF 2

FOR QUANTITIES SEE SHEET 7 OF 11

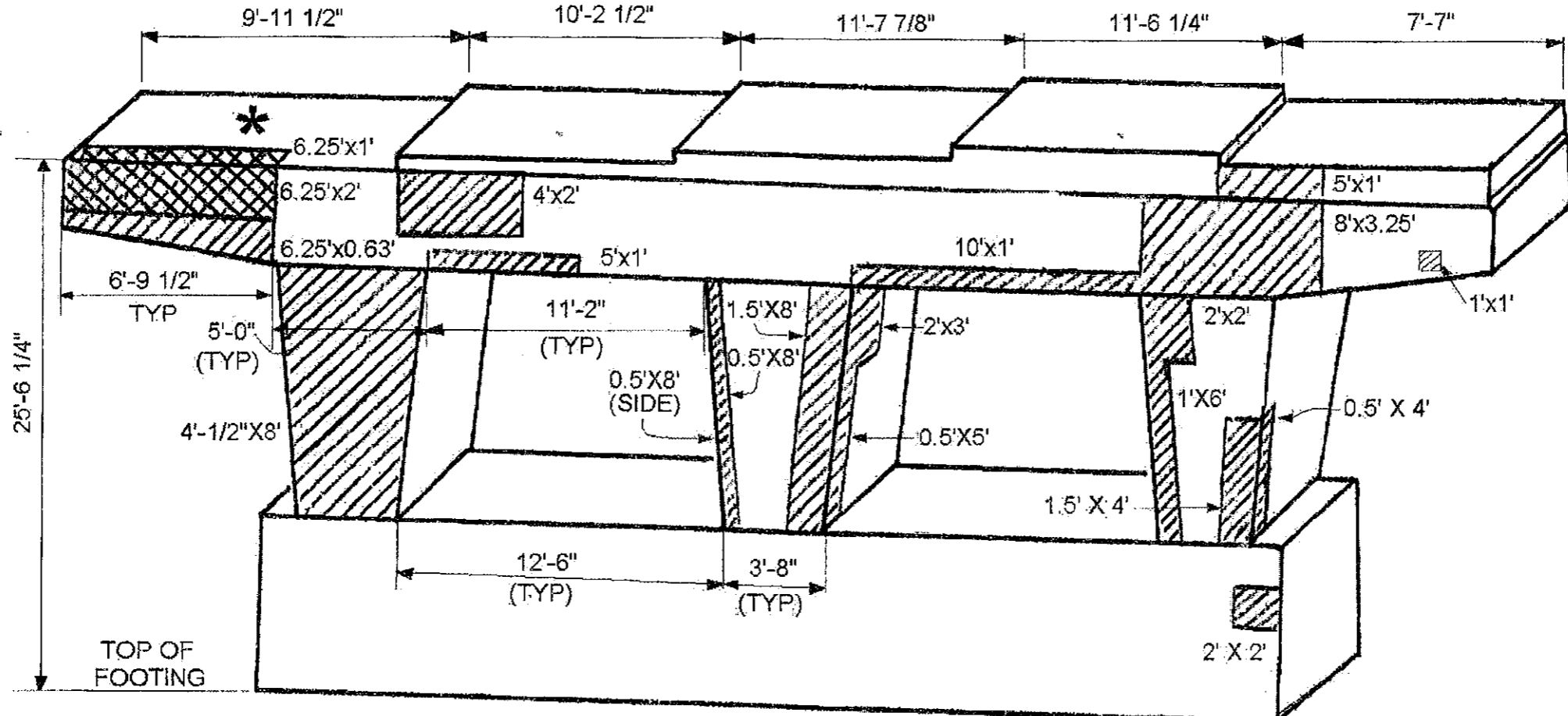
ILLINOIS DEPARTMENT OF
TRANSPORTATION

PIER 2 WEST FACE
EB 95TH ST RAMP SB TO IL 43 (HARLEM AVE)
SN 016-1010
STRUCTURAL PLAN

ROUTE	SECTION	COUNTY	TOTAL SHEETS	SHEET NUMBER
FAP 348	3128-Z-HB-1-I	COOK	16	11


CONTRACT No. 60B25


7 OF 11



PIER 2 BILL OF MATERIALS

PIER 2 EAST FACE
(LOOKING WEST)

 — STRUCTURAL REPAIR OF CONCRETE ($\leq 5''$)
 WEST FACE: 309 SQ. FT.
 EAST FACE: 146 SQ. FT.
 TOTAL 455 SQ. FT.

 — STRUCTURAL REPAIR OF CONCRETE ($> 5''$),
 WEST FACE: 39 SQ. FT.
 EAST FACE: 19 SQ. FT.
 TOTAL 58 SQ. FT.

* — BEAM END SUPPORT REQ. BEAM 1 (EAST & WEST FACE)
 TEMPORARY SHORING & CRIBBBING, EACH - 2

REACTIONS		
	SPAN 2	SPAN 3
R DL (K)	31.2	45.1
R LL (K)	37.5	35.4
R IMP (K)	10.6	8.8
R (TOTAL)	79.3	88.2

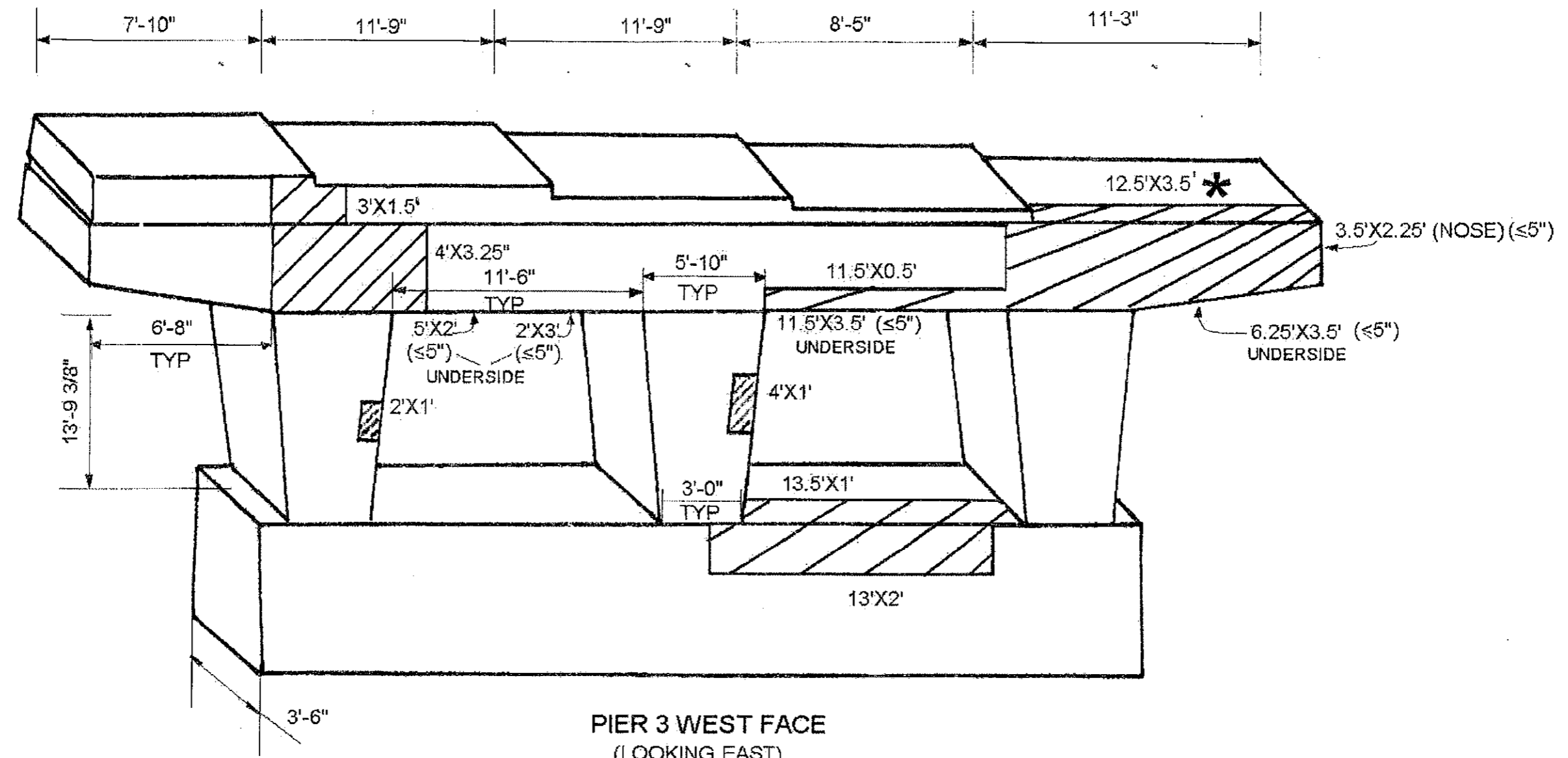
SHEET 2 OF 2

ILLINOIS DEPARTMENT OF
 TRANSPORTATION
 PIER 2 EAST FACE
 EB 95TH ST RAMP SB TO IL 43 (HARLEM AVE)
 SN 016-1010
 STRUCTURAL PLAN

ROUTE	SECTION	COUNTY	TOTAL SHEETS	SHEET NUMBER
FAP 348	3128-Z-HB-1-I	COOK	16	12

CONTRACT No. 60B25

8 OF 11



PIER 3 WEST FACE
(LOOKING EAST)

FOR QUANTITIES SEE SHEET 9 OF 11

SHEET 1 OF 2

ILLINOIS DEPARTMENT OF
TRANSPORTATION

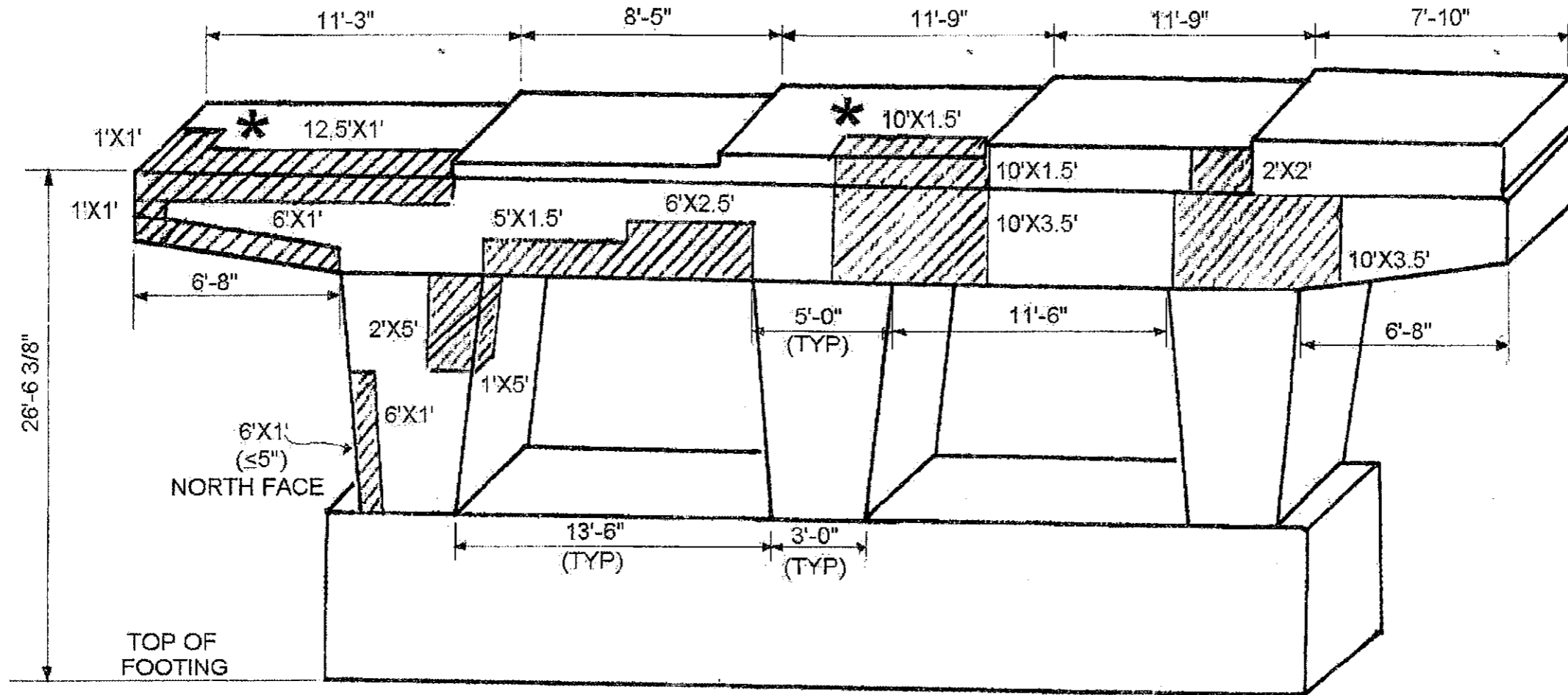
PIER 3 WEST FACE
EB 95TH ST RAMP SB TO IL 43 (HARLEM AVE)
SN 016-1010
STRUCTURAL PLAN

FOR QUANTITIES SEE SHEET 9 OF 11

ROUTE	SECTION	COUNTY	TOTAL SHEETS	SHEET NUMBER
FAP 348	3128-Z-HB-1-I	COOK	16	13

CONTRACT No. 60B25

9 OF 11



PIER 3 BILL OF MATERIALS



STRUCTURAL REPAIR OF CONCRETE (≤5")

WEST FACE: 199 SQ. FT.
EAST FACE: 174 SQ. FT.
TOTAL 373 SQ. FT.



BEAM END SUPPORT REQ. BEAM 1 EAST & WEST FACE & BM 3 EAST FACE
TEMPORARY SHORING & CRIBBING, EACH - 3

PIER 3 EAST FACE
(LOOKING WEST)

	REACTIONS	
	SPAN 3	SPAN 4
R DL (K)	45.1	47.1
R LL (K)	35.4	33.1
R IMP (K)	8.8	8.0
R (TOTAL)	89.3	88.2

SHEET 2 OF 2

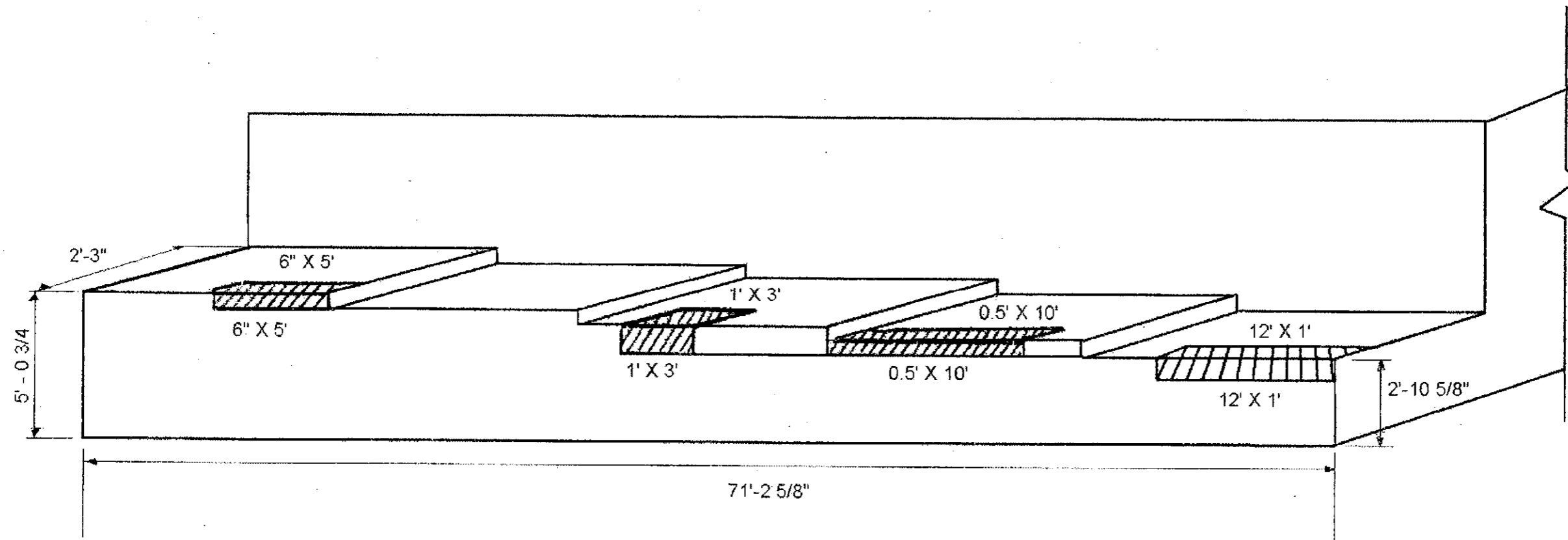
ILLINOIS DEPARTMENT OF
TRANSPORTATION

PIER 3 EAST FACE
EB 95TH ST RAMP SB TO IL 43 (HARLEM AVE)
SN 016-1010
STRUCTURAL PLAN

ROUTE	SECTION	COUNTY	TOTAL SHEETS	SHEET NUMBER
FAP 348	3128-Z-HB-1-I	COOK	16	14

CONTRACT No. 60B25

10 OF 11



EAST ABUTMENT

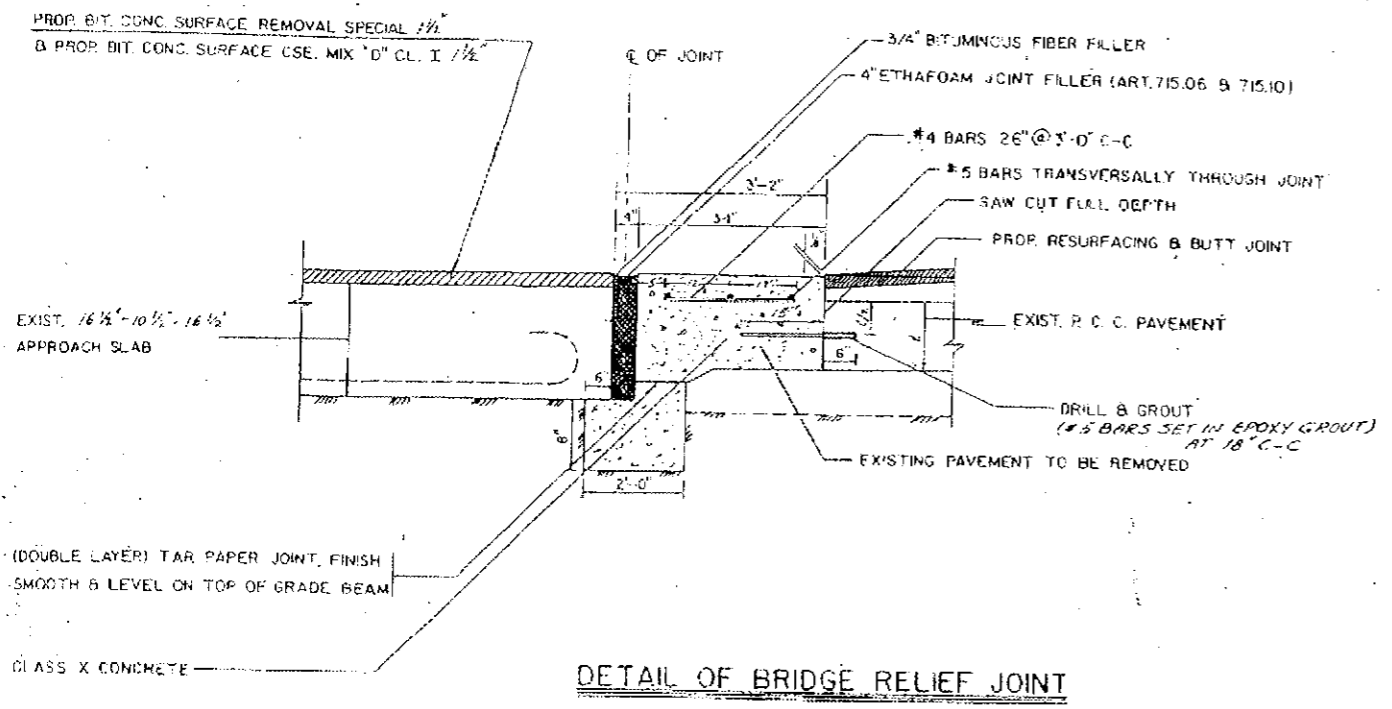
 — STRUCTURAL REPAIR OF CONCRETE ($\leq 5''$), 21 SQ. FT.

ILLINOIS DEPARTMENT OF
TRANSPORTATION

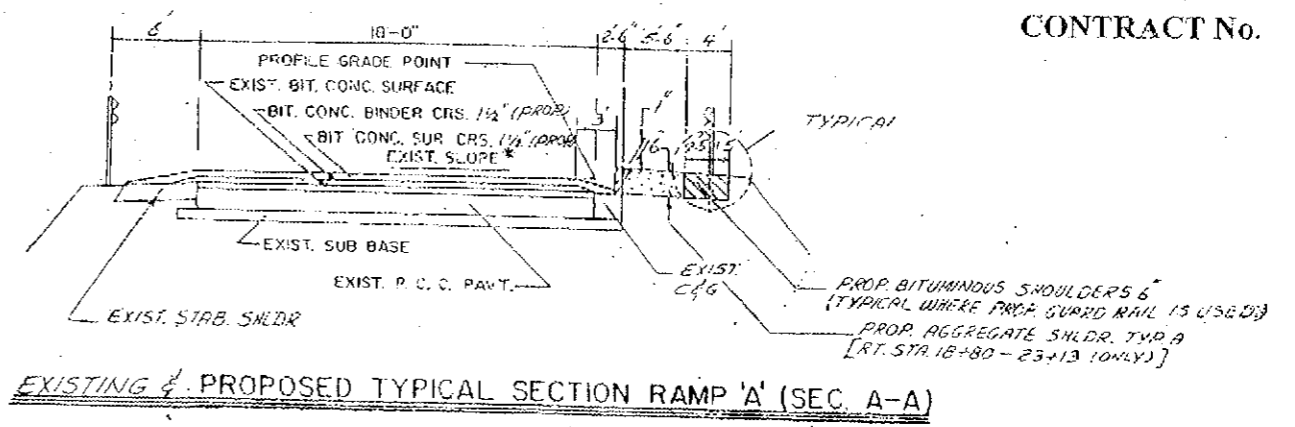
EAST ABUTMENT
EB 95TH ST RAMP SB TO IL 43 (HARLEM AVE)
SN 016-1010
STRUCTURAL PLAN

ROUTE	SECTION	COUNTY	TOTAL SHEETS	SHEET NUMBER
FAP 348	3128-Z-HB-1-1	COOK	16	15

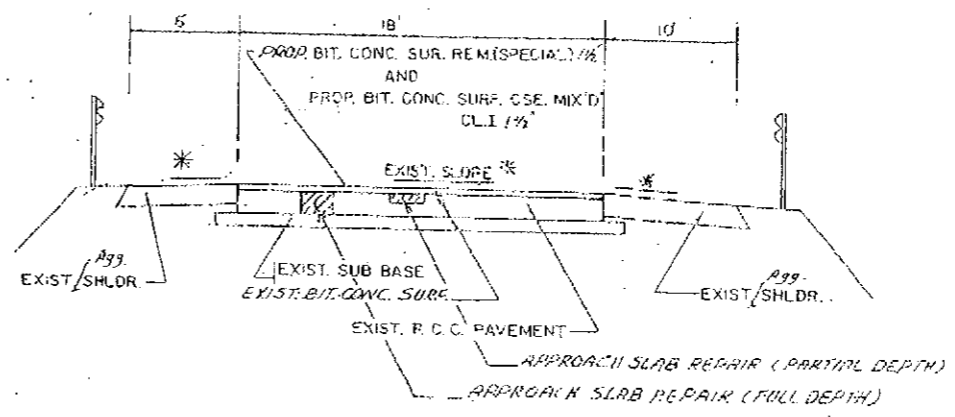
CONTRACT No. 60B25



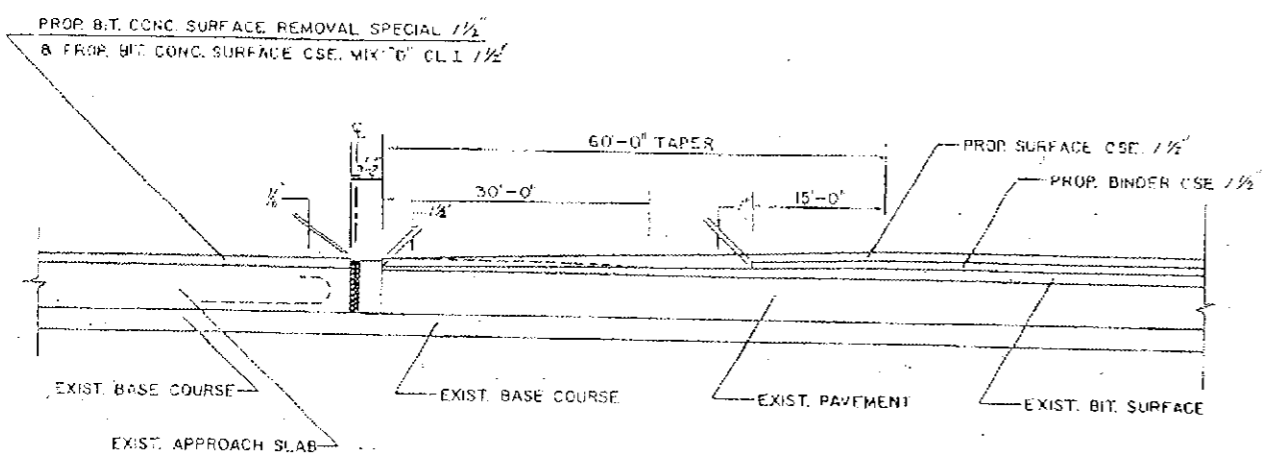
DETAIL OF BRIDGE RELIEF JOINT



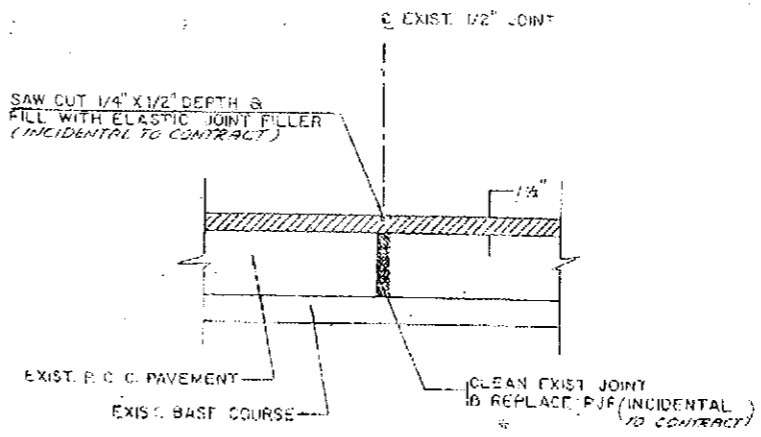
EXISTING & PROPOSED TYPICAL SECTION RAMP 'A' (SEC. A-A)



EXISTING & PROPOSED TYPICAL SECTION APPROACH SLAB (SEC. B-B)



DETAIL 60' TAPER BUTT JOINT



SECTION THRU EXPANSION JOINT (SEC. C-C)
APPROACH SLAB

FOR INFORMATION ONLY

ILLINOIS DEPARTMENT OF
TRANSPORTATION

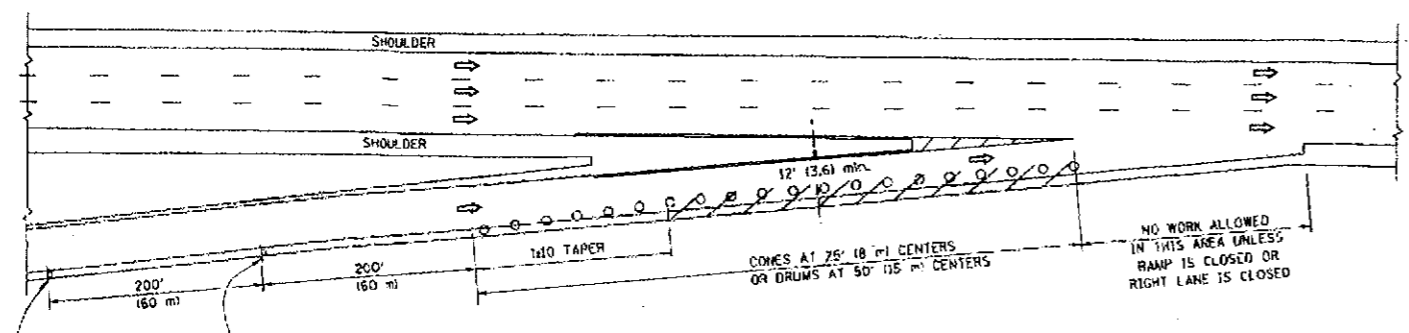
APPROACH PAVEMENT

EB 95TH ST RAMP SB TO IL 43 (HARLEM AVE)
SN 016-1010

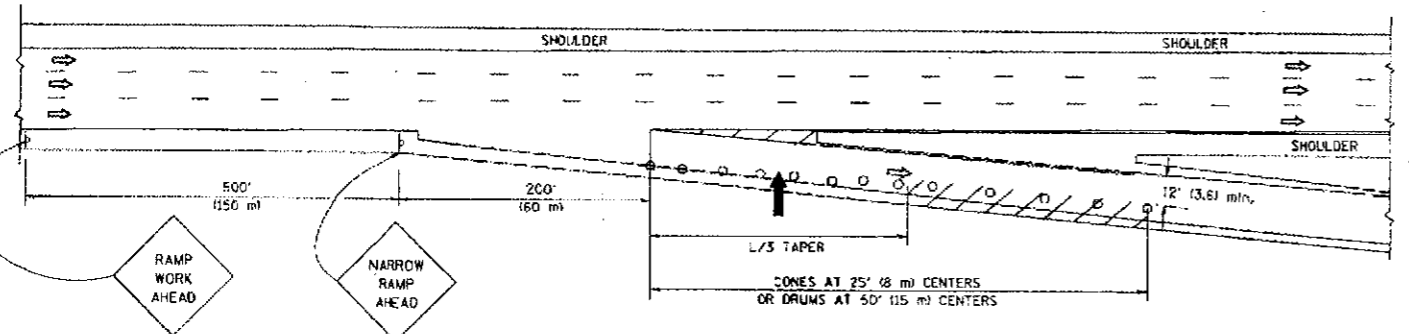
PARTIAL RAMP CLOSURE DETAILS

SHOULDER CLOSURE DETAILS

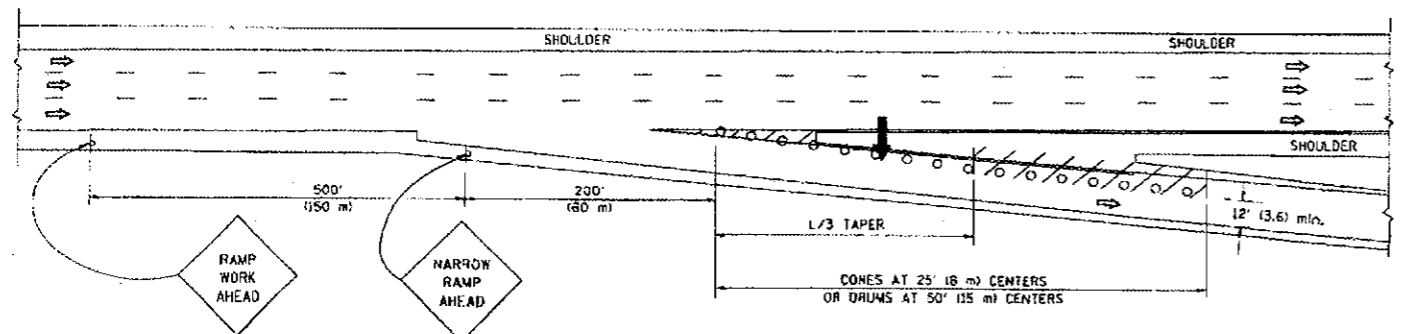
F.A.P. RYE	SECTION	COUNTY	TOTAL SHEETS	SHEET NO.
348		COOK	16	16
STA.	TO STA.		FED. ROAD DIST. NO. ILLINOIS FED. AID PROJECT	
	312B-E-HB-1-T			



TYPICAL ENTRANCE RAMP



TYPICAL EXIT RAMP



TYPICAL EXIT RAMP

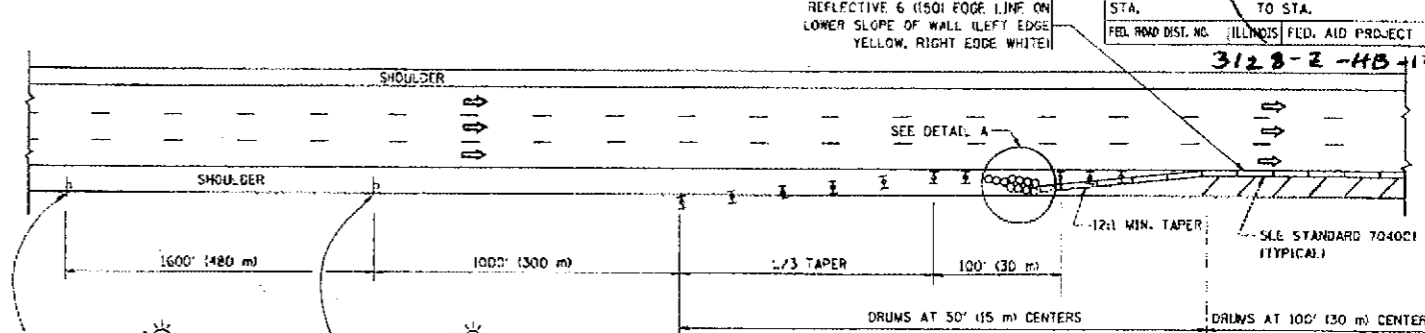
SYMBOLS

- ARROWBOARD
- WORK AREA
- SIGN ON PORTABLE OR PERMANENT SUPPORT
- FLAGGER WITH CONTROL SIGN
- TYPE II BARRICADE, DRUM OR VERTICAL BARRICADE WITH STEADY BURN MONO-DIRECTIONAL LIGHT
- CONE, DRUM OR BARRICADE

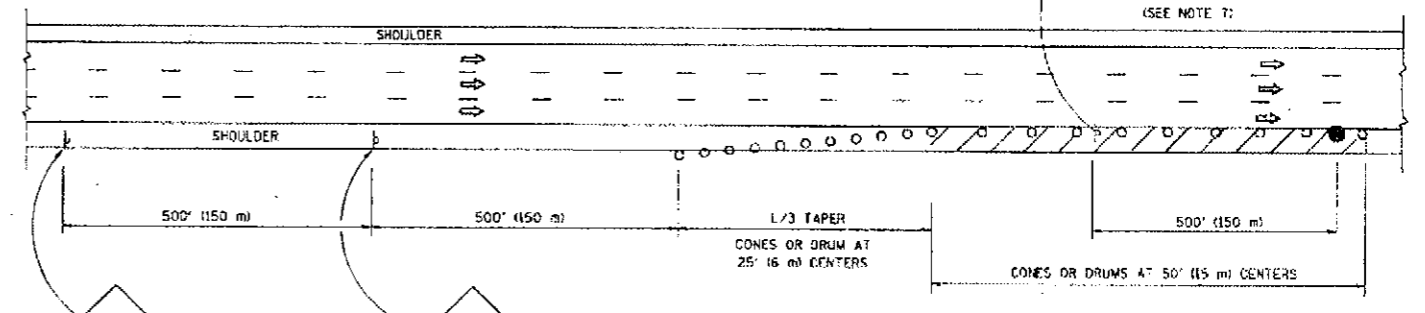
GENERAL NOTES

1. THE "L" DISTANCE EQUALS:

SPEED LIMIT	FORMULAS
45 mph (80 km/h) OR GREATER:	METRIC: $L=0.65(WX^2)$ ENGLISH: $L=1(WX^2)$
W = WIDTH OF OFFSET IN FEET (METERS)	S = NORMAL POSTED SPEED MPH (KM/H)
2. PLASTIC DRUMS WITH HIGH PERFORMANCE REFLECTIVE SHEETING AND STEADY BURNING LIGHTS ARE REQUIRED FOR ALL NIGHTTIME CLOSURES.
3. ALL SIGNS SHALL BE POST MOUNTED IF THE CLOSURE TIME EXCEEDS FOUR DAYS.
4. FLASHING LIGHTS SHALL BE USED DURING THE HOURS OF DARKNESS AND SHALL BE INSTALLED ABOVE THE FIRST TWO SETS OF SIGNS.



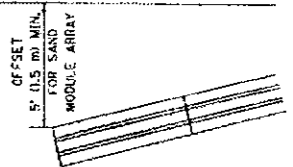
PERMANENT SHOULDER CLOSURE



DAYTIME SHOULDER CLOSURE

THIS DETAIL IS USED WHERE:
 1. VEHICLES, EQUIPMENT, WORKERS OR THEIR ACTIVITIES ENCRDACH IN AN AREA CLOSER THAN 15' (4.5 m) TO THE EDGE OF PAVEMENT FOR A PERIOD IN EXCESS OF 15 MINUTES.

ARRAY DESIGN PER MANUFACTURER TO BE NCHRP 350 COMPLIANT FOR POSTED SPEED.



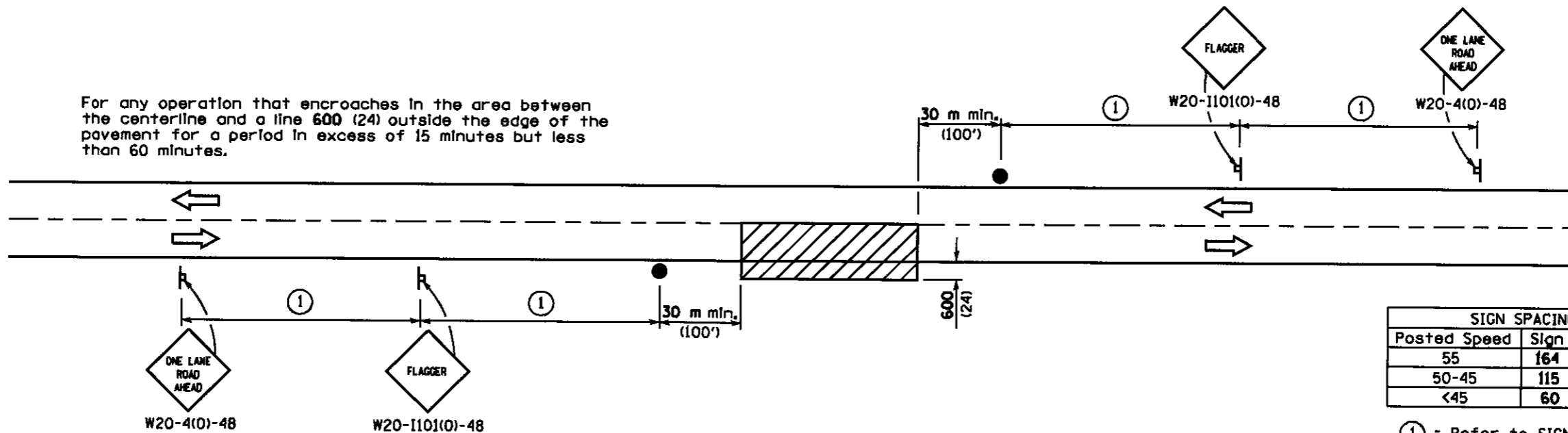
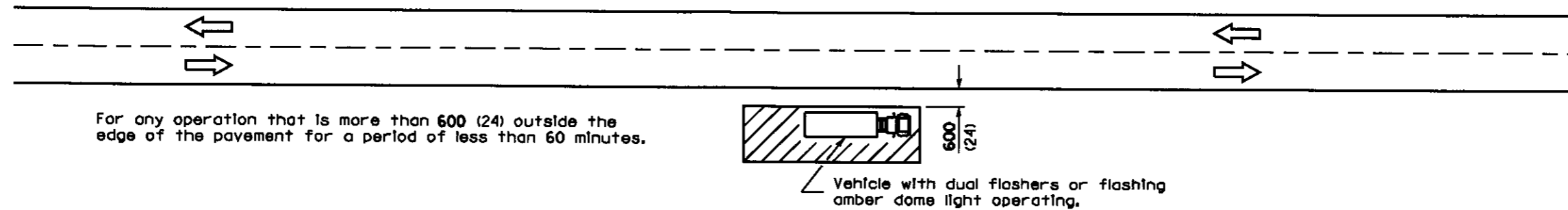
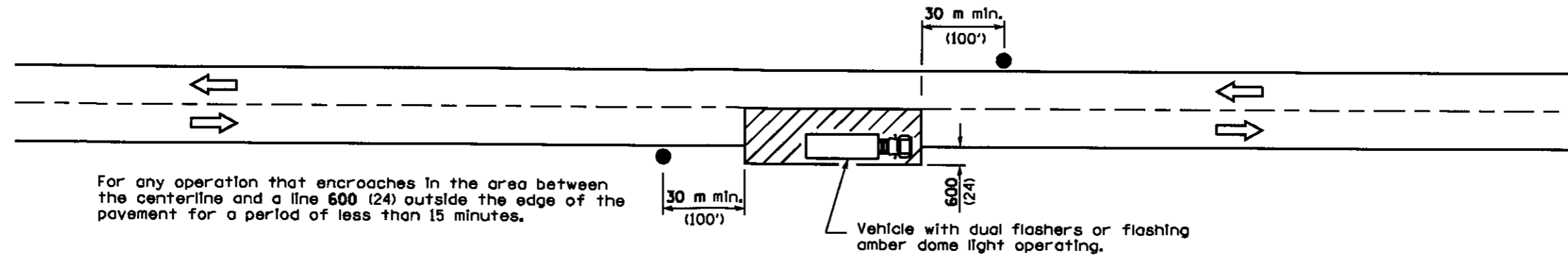
DETAIL "A" IMPACT ATTENUATOR, TEMPORARY (SEE NOTE 5)

5. THE IMPACT ATTENUATOR, TEMPORARY IS NOT REQUIRED WHEN THE TEMPORARY CONCRETE BARRIER WALL IS PROTECTED BY OR IS TIED INTO THE EXISTING GUARDSAIL. IF OFFSET IS LESS THAN 6 FEET USE "TRAFFIC BARRIER TERMINAL, TYPE III, TEMPORARY" DEVICE TO MEET NCHRP350 FOR POSTED SPEED.
6. AUTHORIZATION FROM THE DISTRICT'S BUREAU OF TRAFFIC IS REQUIRED FOR ALL FREEWAY CLOSURES.
7. THE FLAGGER AND FLAGGER SIGN ARE REQUIRED AT THE ABOVE WORK SITES WHEN:
 - a. FOUR OR MORE WORK VEHICLES ENTER THE TRAFFIC LANES IN A ONE HOUR PERIOD.
 - b. THE WORK ACTIVITY REQUIRES FREQUENT ENCRDACHMENT INTO THE LANE OPEN TO TRAFFIC.
 THE FLAGGER SHALL BE STATIONED APPROXIMATELY 100' (30 m) TO 200' (60 m) IN ADVANCE OF THE WORKERS.

ALL DIMENSIONS ARE IN INCHES (MILLIMETERS) UNLESS OTHERWISE SHOWN.

REVISIONS	
NAME	DATE
DWS	11/96
JAF	12/02
NCHRP 350	04/03
JAF	2/05
SRB	1/07

ILLINOIS DEPARTMENT OF TRANSPORTATION
 TRAFFIC CONTROL DETAILS FOR FREEWAY
 SHOULDER CLOSURES
 PARTIAL RAMP CLOSURES
 DESIGNED BY: DWS
 DRAWN BY:
 CHECKED BY:
 TC-17



SIGN SPACING	
Posted Speed	Sign Spacing
55	164 m (500')
50-45	115 m (350')
<45	60 m (200')

① = Refer to SIGN SPACING table for distances.

All dimensions are in millimeters (inches) unless otherwise shown.

TYPICAL APPLICATIONS

- Marking patches
- Field survey
- String line
- Utility operations
- Cleaning up debris on pavement

SYMBOLS

- Work area
- Sign on portable or permanent support
- Flagger with traffic control sign

DATE	REVISIONS
1-1-05	Deleted FLAGGER SYMBOL sign.
1-1-00	Deleted "150 m" sign spacing dimension. Added SIGN SPACING table.

**LANE CLOSURE, 2L, 2W,
SHORT TIME OPERATIONS**

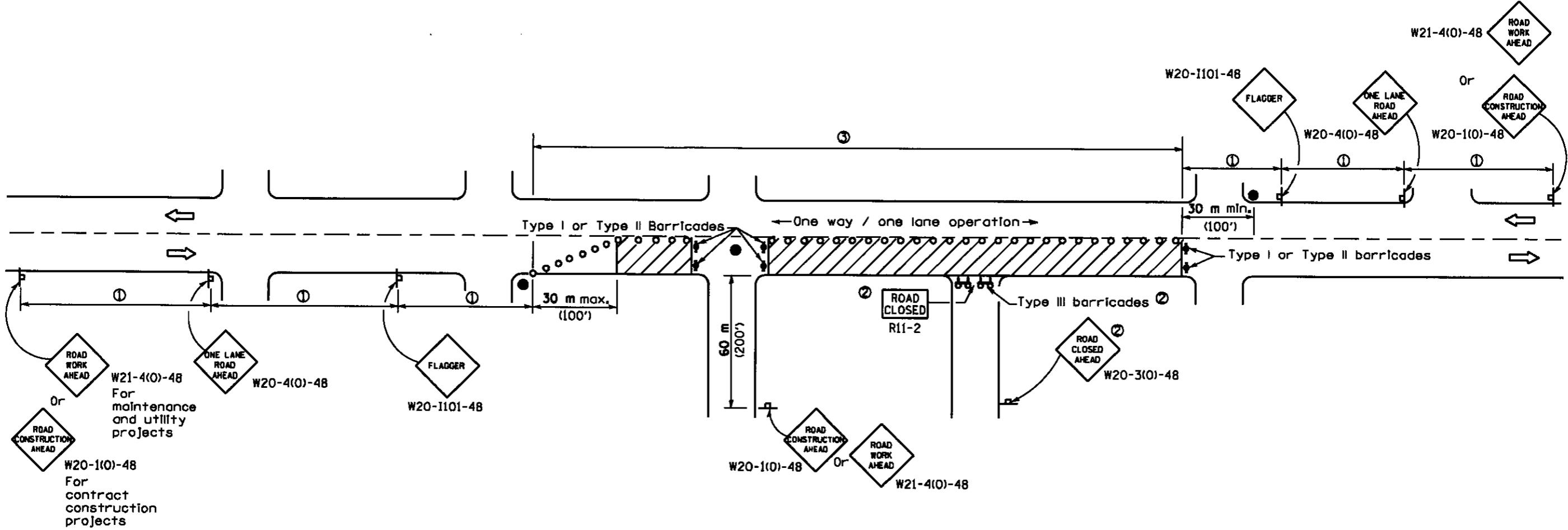
STANDARD 701301-02

Illinois Department of Transportation

APPROVED January 1, 2006
ENGINEER OF OPERATIONS

APPROVED January 1, 2006
ENGINEER OF DESIGN AND ENVIRONMENT

ISSUES 1-1-97



SIGN SPACING	
Posted Speed	Sign Spacing
55	164 m (500')
50-45	115 m (350')
<45	60 m (200')

SYMBOLS

- Work area
- Cone, drum or barricade (not required for moving operations)
- Sign on portable or permanent support
- Flagger with traffic control sign
- Barricade or drum with flashing light
- Type III barricade with flashing lights

- ① Refer to SIGN SPACING TABLE for distances.
- ② For approved sideroad closures.
- ③ Cones at 8 m (25') centers for 75 m (250'). Additional cones may be placed at 15 m (50') centers. When drums or Type I or Type II barricades are used, the interval between devices may be doubled.

GENERAL NOTES

This Standard is used where at any-time, day or night, any vehicle, equipment, workers or their activities encroach on the pavement requiring the closure of one traffic lane in an urban area.

All dimensions are in millimeters (inches) unless otherwise shown.

Illinois Department of Transportation

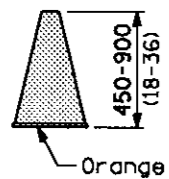
APPROVED January 1, 2005
 ENGINEER OF OPERATIONS
 APPROVED January 1, 1999
 ENGINEER OF DESIGN AND ENVIRONMENT

26-1-1 02/99

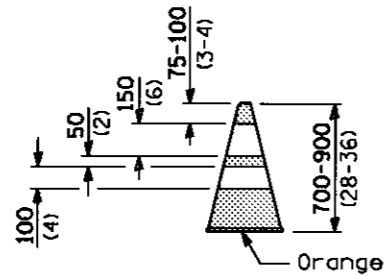
DATE	REVISIONS
1-1-05	Deleted FLAGGER SYMBOL sign and repositioned flaggers.
1-1-99	Rev. barr. or drum w/ flashing light sym. & add Type III barr. sym.

**URBAN LANE CLOSURE,
2L, 2W, UNDIVIDED**

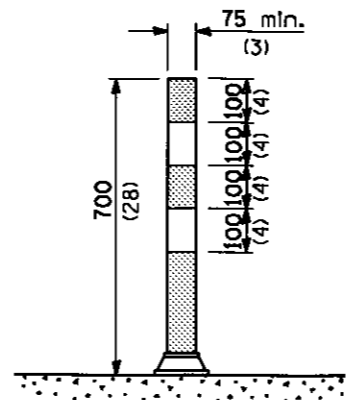
STANDARD 701501-03



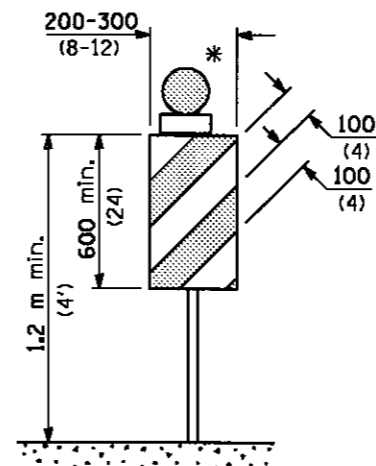
CONE



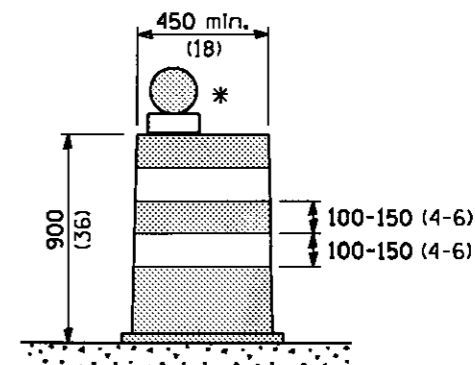
REFLECTORIZED CONE



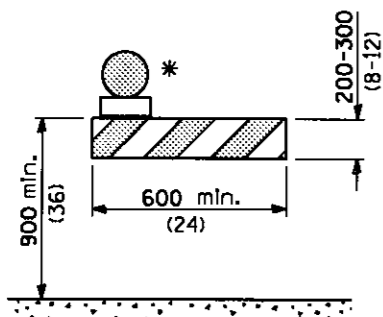
FLEXIBLE DELINEATOR



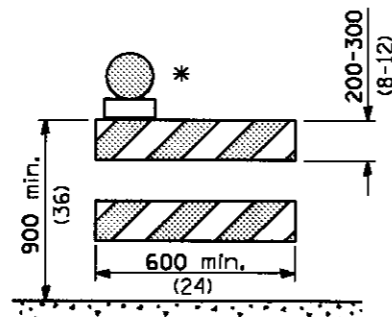
**VERTICAL PANEL
POST MOUNTED**



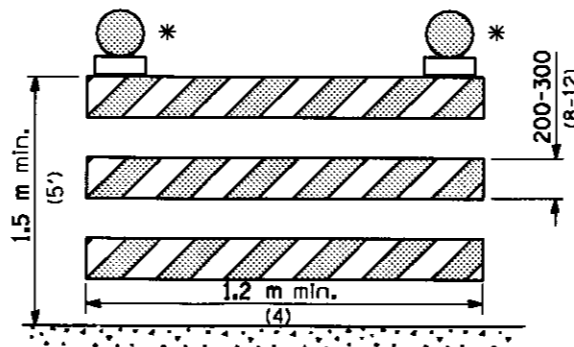
DRUM



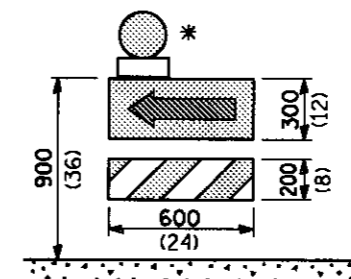
TYPE I BARRICADE



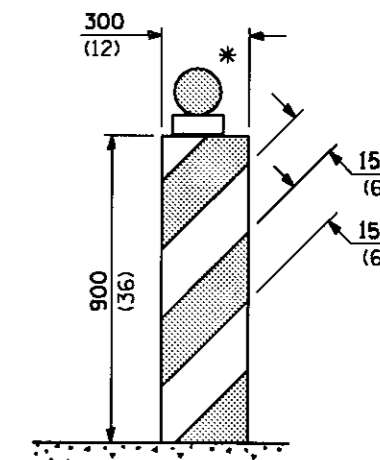
TYPE II BARRICADE



TYPE III BARRICADE



**DIRECTION INDICATOR
BARRICADE**



VERTICAL BARRICADE

* Warning lights (if required)

GENERAL NOTES

All heights shown shall be measured above the pavement surface.

All dimensions are in millimeters (inches) unless otherwise shown.

Illinois Department of Transportation

APPROVED Apr 11, 2006
ENGINEER OF OPERATIONS

APPROVED Apr 11, 2006
ENGINEER OF DESIGN AND ENVIRONMENT

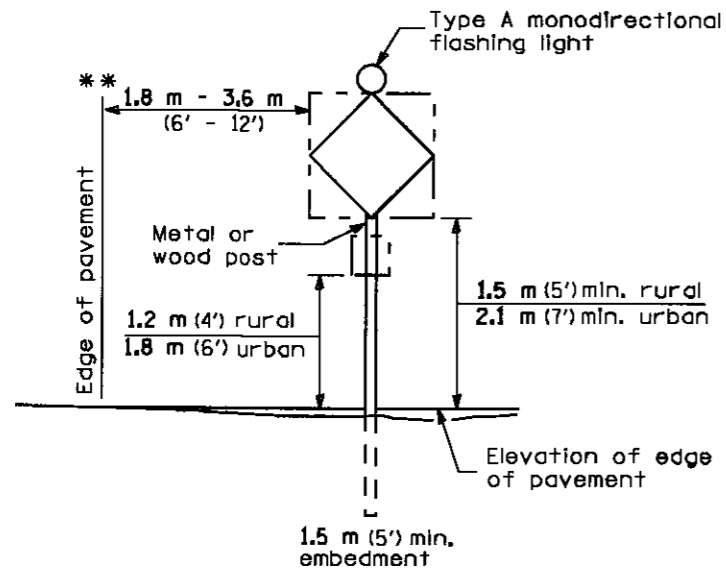
16-1-1 GENSSI

DATE	REVISIONS
4-1-06	Revised vert. barricade, post mounted signs, and signs on temp. supports.
1-1-05	Added note to work limit signing and re-added Type I barricade.

TRAFFIC CONTROL DEVICES

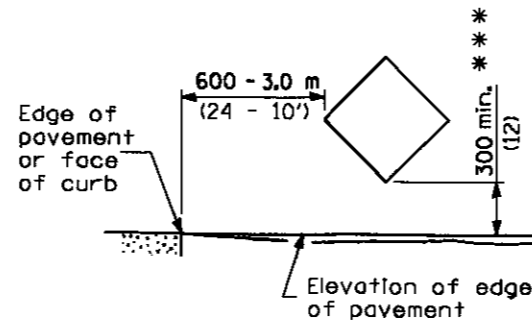
(Sheet 1 of 3)

STANDARD 702001-06



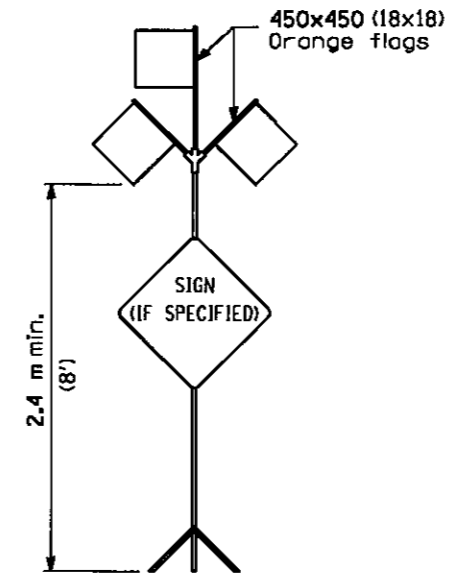
POST MOUNTED SIGNS

** When curb or paved shoulder are present this dimension shall be 600 (24) to the face of curb or 1.8 m (6') to the outside edge of the paved shoulder.



SIGNS ON TEMPORARY SUPPORTS

*** When work operations exceed four days, this dimension shall be 1.5 m (5') min.



HIGH LEVEL WARNING DEVICE

ROAD
CONSTRUCTION
NEXT X MILES

END
CONSTRUCTION

G20-1(0)-6036

G20-2a(0)-6024

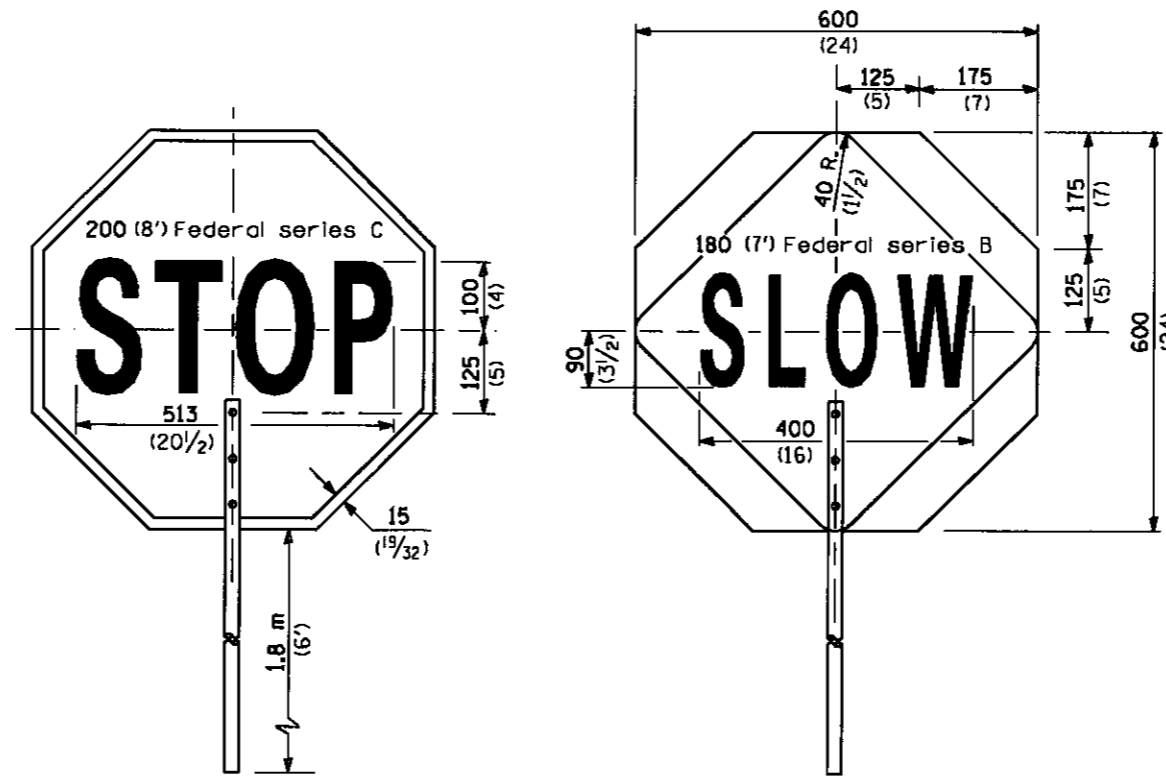
This signing is required for all projects 3200 m (2 miles) or more in length.

ROAD CONSTRUCTION NEXT X MILES sign shall be placed 150 m (500') in advance of project limits.

END CONSTRUCTION sign shall be erected at the end of the job unless another job is within 3200 m (2 miles).

Dual sign displays shall be utilized on multi-lane highways.

WORK LIMIT SIGNING



FRONT SIDE

REVERSE SIDE

FLAGGER TRAFFIC CONTROL SIGN

All dimensions are in millimeters (Inches) unless otherwise shown.

TRAFFIC CONTROL DEVICES

(Sheet 2 of 3)

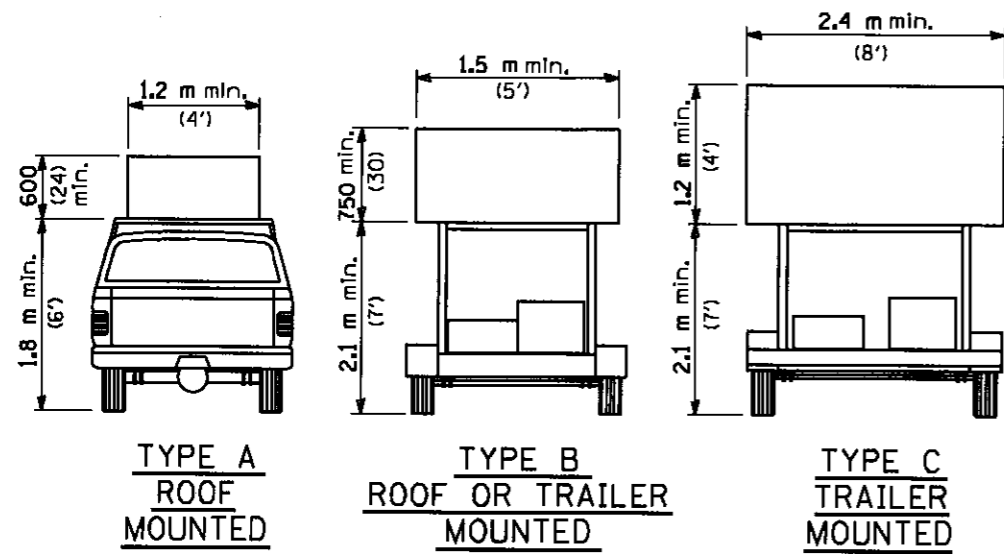
STANDARD 702001-06

Illinois Department of Transportation

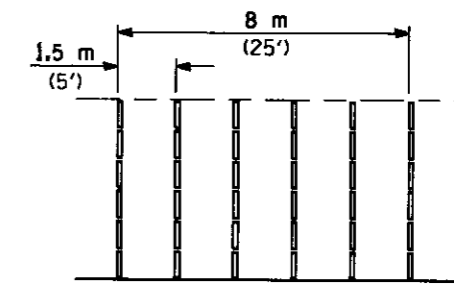
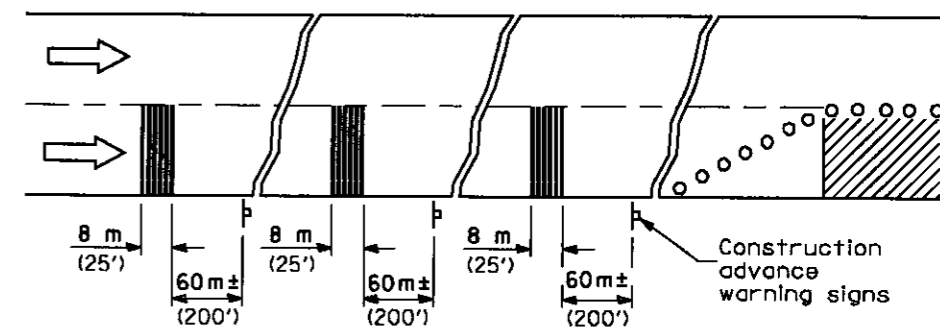
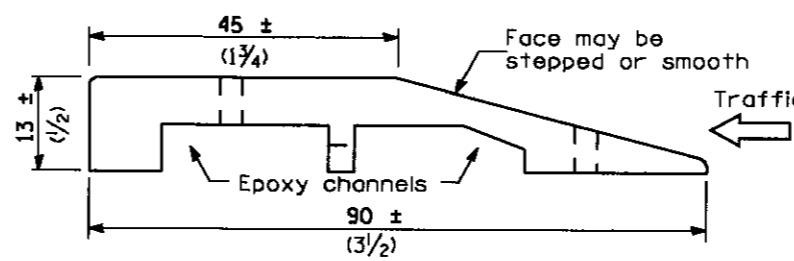
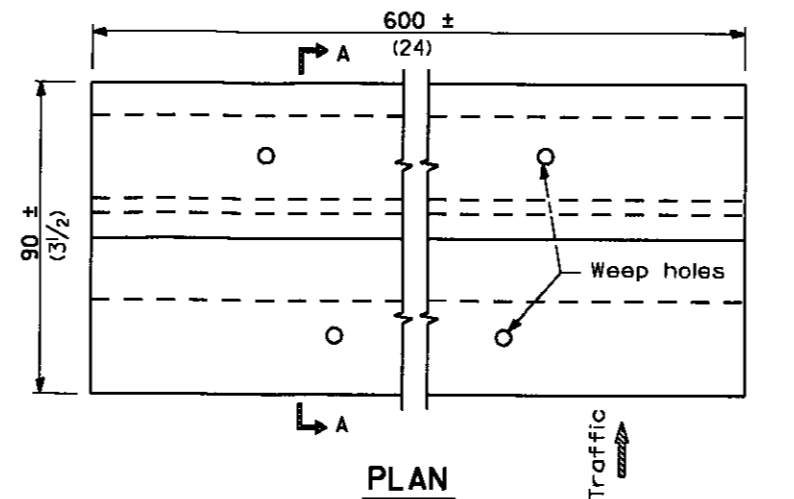
APPROVED April 1, 2006
ENGINEER OF OPERATIONS

APPROVED April 1, 2006
ENGINEER OF DESIGN AND ENVIRONMENT

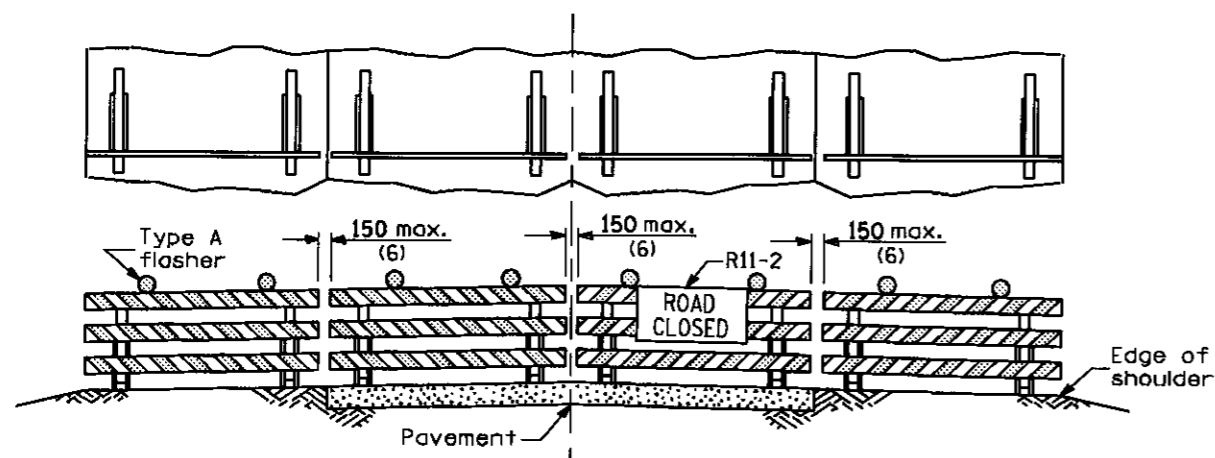
ISSUED 1-1-97



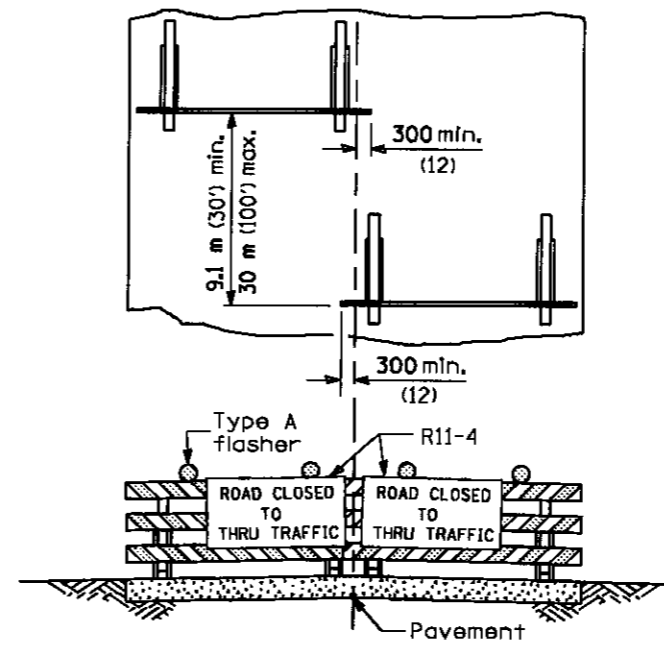
ARROW BOARDS



TEMPORARY RUMBLE STRIPS



Reflectorized striping may be omitted on the back side of the barricades. If a Type III barricade with an attached sign panel which meets NCHRP 350 is not available, the sign may be mounted on an NCHRP 350 temporary sign support directly in front of the barricade.



Reflectorized striping shall appear on both sides of the barricades. If a Type III barricade with an attached sign panel which meets NCHRP 350 is not available, the signs may be mounted on NCHRP 350 temporary sign supports directly in front of the barricade.

All dimensions are in millimeters (inches) unless otherwise shown.

TRAFFIC CONTROL DEVICES

(Sheet 3 of 3)

STANDARD 702001-06

Illinois Department of Transportation

APPROVED April 1, 2006

ENGINEER OF OPERATIONS

APPROVED April 1, 2006

ENGINEER OF DESIGN AND ENVIRONMENT

TYPICAL APPLICATIONS OF TYPE III BARRICADES CLOSING A ROAD