

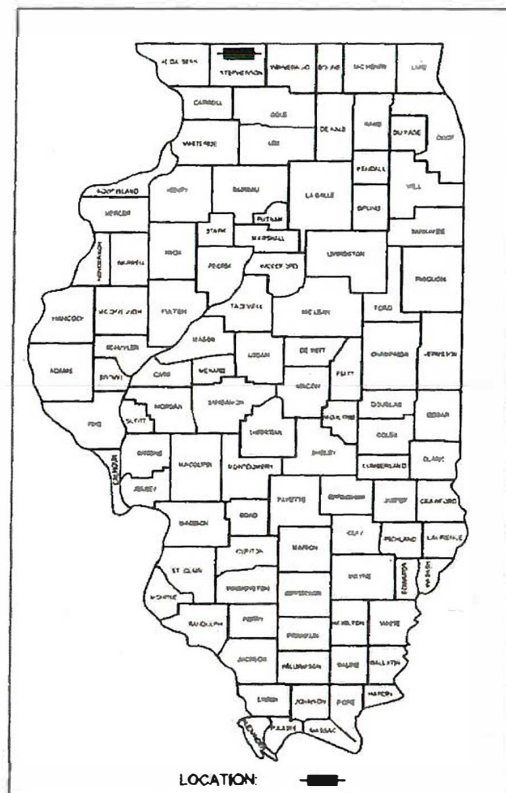
RTE	SECTION	COUNTY	TOTAL SHEETS
	23-0114-00-00	STEPHENSON	12
		ILLINOIS	01

03-08-2024 LETTING ITEM 143

**INDEX OF SHEETS**

SHEET NO.	DESCRIPTION
1	COVER SHEET, INDEX OF SHEETS
2	GENERAL NOTES, STATE STANDARDS, SUMMARY OF QUANTITIES
3	SITE #1: STATELINE RD & DAVIS RD.
4	SITE #2: W. FLORENCE RD.
5	SITE #3: N. CHURCH ST. CURVE
6	SITE #4: W. PEARL CITY RD.
7	SITE #5: W. ORANGEVILLE RD
8	SITE #6: W. ROCKGROVE RD.
9	SITE #7: N AFOLKEY ROAD - 8" AND PAVEMENT MARKING
10	SITE #8: W. GALENA RD. - RAISED REFLECTIVE PAVEMENT MARKERS
11	SITE #8: W. GALENA RD. - RAISED REFLECTIVE PAVEMENT MARKERS
12	RUMBLE STRIP (ADVANCE OF INTERSECTIONS) DETAIL

**STATE OF ILLINOIS**  
**COUNTY OF STEPHENSON**  
**PLANS FOR RUN OFF THE ROAD**  
**IMPROVEMENT PROGRAM**  
**FUNDING: HSIP AND LOCAL**  
**VARIOUS ROUTES**  
**STEPHENSON COUNTY**  
**PROJECT NO. PU81(496)**  
**JOB NO.C-92-084-23**  
**CONTRACT NO. 85752**



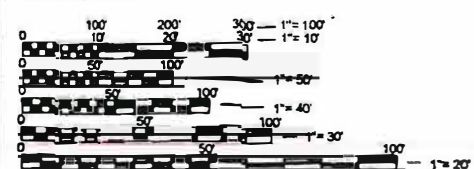
**UTILITIES**

COMED  
2900 US BUSINESS 12 W  
FREEPORT, IL 61032  
(815) 426-8331

FRONTIER COMMUNICATIONS  
947 E CLINTON ST  
FREEPORT, IL 61032  
(815) 756-8988

**COUNTY ENGINEER**

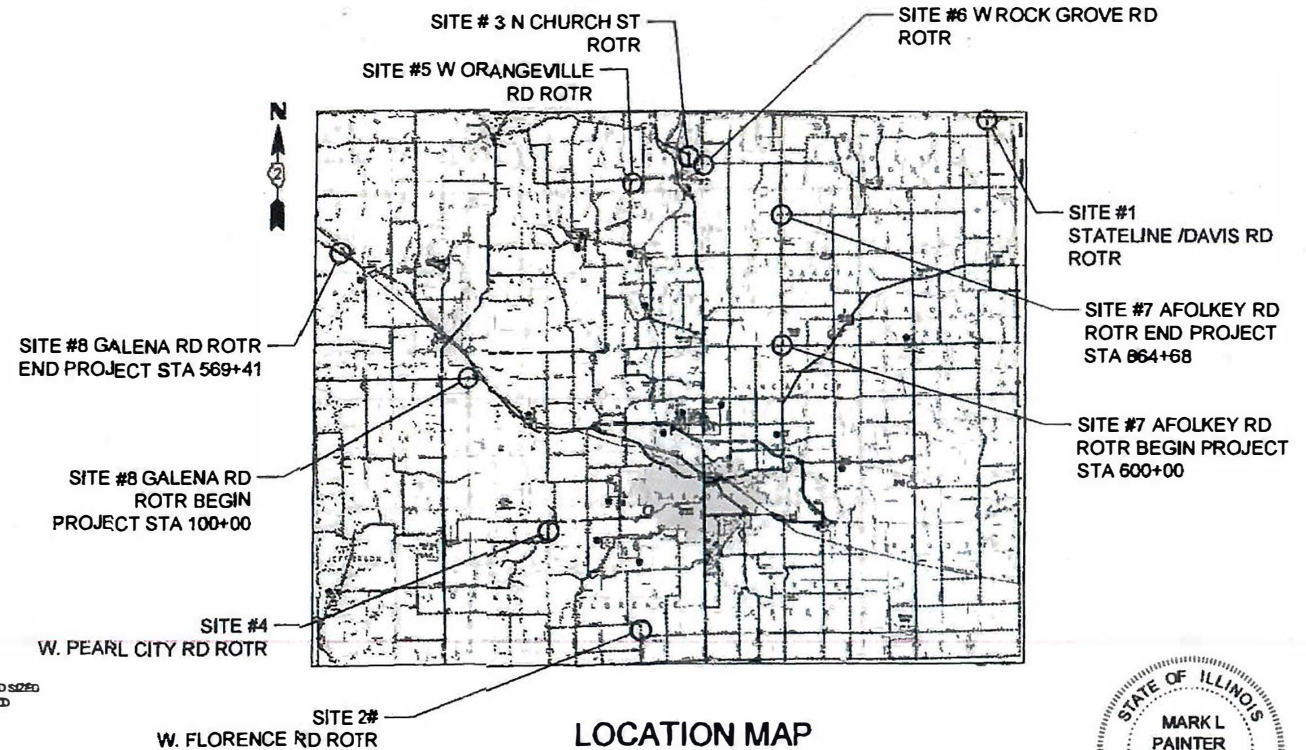
DALE RASMUSSEN  
STEPHENSON COUNTY HIGHWAY DEPARTMENT  
COUNTY ENGINEER  
295 W. LAMM ROAD  
FREEPORT, IL 61032  
(815) 235-7497



ALL SIZE PLANS HAVE BEEN PREPARED USING STANDARD ENGINEERING SCALES. REDUCED SIZE PLANS WILL NOT CONFORM TO STANDARD SCALES. IN MAKING MEASUREMENTS ON REDUCED PLANS, THE ABOVE SCALES MAY BE USED.

J.U.L.I.E.  
JOINT UTILITY LOCATION INFORMATION  
FOR EXCAVATION  
1-800-882-9123  
CR 811

CA PROJECT NO. 8480



EACH LOCATION INCLUDES AN INVENTORY, SURVEY, ASSESSMENT AND DESIGN OF RUN OFF THE ROAD TO MEET CURRENT IDOT LOCAL ROADS DESIGN STANDARDS



*Mark L. Painter*  
MARK L. PAINTER, P.E.  
LICENSE EXPIRES: 11/30/2025  
1/10/24  
DATE

**AGENCY RESPONSIBLE FOR LETTING**

APPROVED: *Dale Rasmussen*  
1/11/2024  
COUNTY ENGINEER

PASSED: *Janet M. ...*  
1/11/24  
DISTRICT ONE ENGINEER OF LOCAL ROADS & STREETS

RELEASING FOR BID BASED ON LIMITED REVIEW: *Stephen M. ...*  
1/11/24  
DEPUTY DIRECTOR OF HIGHWAYS, REGIONAL ENGINEER

**CHASTAIN & ASSOCIATES LLC**  
CONSULTING ENGINEERS

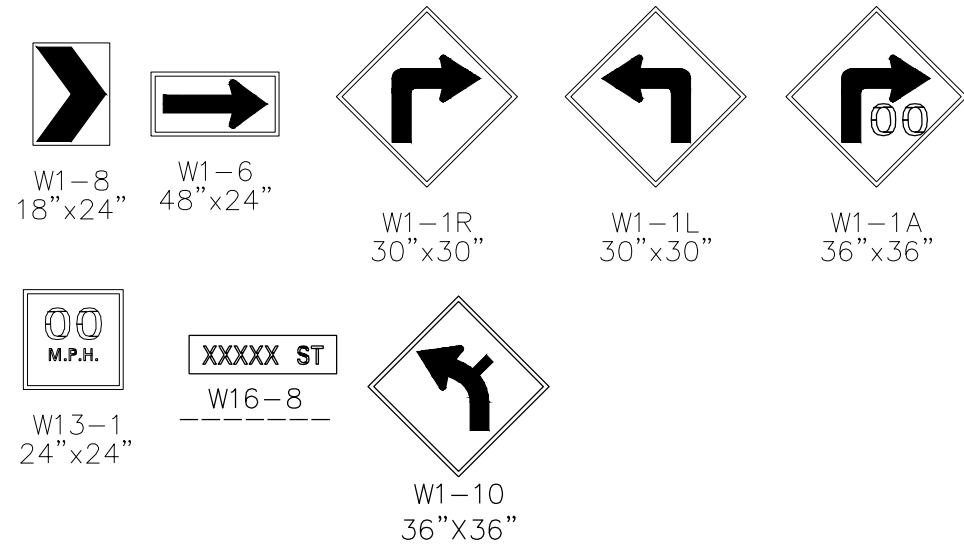
## COMMITMENTS

1. THIS PROJECT IS LOCATED ON VARIOUS ROUTES IN STEPHENSON COUNTY. THE WORK INCLUDED IN THE SECTION CONSISTS OF VARIOUS TYPES OF SIGNAGE, CENTERLINE RUMBLE STRIP, RAISED REFLECTIVE PAVEMENT MARKERS AND PAVEMENT MARKING.
2. NO MATERIAL SHALL BE LEFT ON OR NEAR THE ROADWAY DURING NON-WORKING HOURS.
3. ANY NECESSARY TRAFFIC CONTROL WILL BE PROVIDED BY THE CONTRACTOR. APPROPRIATE STANDARDS ARE INCLUDED IN THE PLANS AND CONTRACT DOCUMENTS.
4. ILLINOIS STATE LAW REQUIRES 48 HOUR NOTICE TO BE GIVEN TO UTILITIES BEFORE DIGGING. FIELD MARKING OF FACILITIES MAY BE OBTAINED BY CONTACTING J.U.L.I.E. (PHONE 800-892-0123) OR FOR NON-MEMBERS, BY CONTACTING THE UTILITY COMPANY DIRECTLY.
5. THE FINAL PAVEMENT MARKERS/STRIPING SHALL BE IN PLACE PRIOR TO PLACING THE RAISED REFLECTIVE PAVEMENT MARKERS.

### STATE STANDARDS

STANDARD NO.	DESCRIPTION
701006-05	OFF-RD OPERATIONS, 2L, 2W, 15' (4.5M) TO 24" (600MM) FROM PAVEMENT EDGE
701201-05	LANE CLOSURE, 2L, 2W, DAY ONLY, FOR SPEEDS ≥45 MPH
701301-04	LANE CLOSURE, 2L, 2W, SHORT TIME OPERATIONS
701306-04	LANE CLOSURE, 2L, 2W, SLOW MOVING OPERATIONS DAY ONLY, FOR SPEEDS ≥45 MPH
701311-03	LANE CLOSURE, 2L, 2W, MOVING OPERATIONS - DAY ONLY
701901-09	LANE CLOSURE, MULTILANE, DAY OPERATIONS ONLY, FOR SPEEDS > 45 MPH TO 55 MPH
720001-01	SIGN PANEL MOUNTING DETAILS
720006-04	SIGN PANEL ERECTION DETAILS
720011-01	METAL POSTS FOR SIGNS, MARKERS & DELINEATORS
780001-05	TYPICAL PAVEMENT MARKINGS
781001-04	TYPICAL APPLICATIONS RAISED REFLECTIVE PAVEMENT MARKERS

### LEGEND



## SUMMARY OF QUANTITIES

CONSTRUCTION TYPE CODE: 0021			
CODE NO.	ITEM	UNIT	TOTAL QUANTITY
67100100	MOBILIZATION	L SUM	1
72000100	SIGN PANEL - TYPE 1	SQ FT	541
72900100	METAL POST - TYPE A	FOOT	880
72800100	TELESCOPING STEEL SIGN SUPPORT	FOOT	235
73100100	BASE FOR TELESCOPING STEEL SIGN SUPPORT	EACH	12
78001110	PAINT PAVEMENT MARKING LINE - 4"	FOOT	157,000
78001150	PAINT PAVEMENT MARKING LINE - 12"	FOOT	66
78100100	RAISED REFLECTIVE PAVEMENT MARKER	EACH	670
78300200	RAISED REFLECTIVE PAVEMENT MARKER REMOVAL	EACH	300
X7010216	TRAFFIC CONTROL AND PROTECTION (SPECIAL)	LSUM	1
X7240300	SIGN REMOVAL	EACH	13
X7240505	RELOCATE SIGN PANEL AND POST	EACH	3
Z0048665	RR PROTECTIVE LIABILITY INS	LSUM	1
Z0013758	CONSTRUCTION LAYOUT	LSUM	1
Z0055300	RUMBLE STRIP	EACH	3

FILE NAME: R:\PRJ\COUNTY\8480\STEPHENSON CO\HSIP\RUN OFF THE ROAD\CADD\CADD\_GENERAL NOTES.DWG

USER NAME = COREY DEETS, P.E.	DESIGNED - MLP	REVISED -
PLOT SCALE = 0.5:1	DRAWN - CRD	REVISED -
PLOT DATE = 1/31/2024	CHECKED -	REVISED -
	DATE - 01/10/2024	REVISED -

**CHASTAIN & ASSOCIATES LLC**  
CONSULTING ENGINEERS

6832 STALTER DRIVE  
SUITE 100  
ROCKFORD, ILLINOIS 61108  
OFFICE (815) 488-0050  
www.chastainengineers.com



### GENERAL NOTES

SCALE: NTS      SHEET 1 OF 1 SHEETS      STA.      TO STA.

F.A. RTE.	SECTION	COUNTY	TOTAL SHEETS	SHEET NO.
	22-00194-00-SP	STEPHENSON	12	2
CONTRACT NO. 85752				
		ILLINOIS	FED. AID PROJECT	



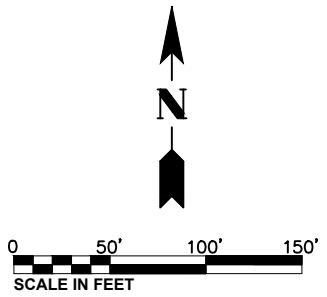
**LEGEND**

-  EXISTING SIGN
-  PROPOSED SIGN

**NOTES:**

1. SEE HIGHWAY STANDARDS 720001, 720006 AND 720011
2. Rx = REMOVE EXISTING SIGN AND POST. SALVAGE MATERIAL TO REMAIN PROPERTY OF STEPHENSON COUNTY. PLACE ON R.O.W. FOR COUNTY PICK-UP.
3. ADVISORY SPEED = 35 MPH
4. EXACT SIGN LOCATIONS WILL BE DETERMINED IN THE FIELD. W1-8 SIGN LOCATIONS SHALL NOT IMPAIR THE VIEW AT SIDE ROADS AND ENTRANCES.

SIGN SIZE		SIGN NAME	QUANTITY OF SIGNS EA	AREA OF SIGNS SF
W1-8L	18X24	LEFT CHEVRON SIGN	7	21
W1-8R	18X24	RIGHT CHEVRON SIGN	7	21
W1-6L	48X24	LEFT ARROW SIGN	1	8
W1-6R	48X24	RIGHT ARROW SIGN	1	8
W1-1L	30X30	COMBINATION HORIZONTAL ALIGNMENT/INTERSECTION		
W1-1R	30X30	RIGHT TURN ARROW SIGN		
W1-2aR	36X36	RIGHT TURN ARROW WITH SPEED LIMIT SIGN	1	9
W1-2aL	36X36	LEFT TURN ARROW WITH SPEED LIMIT SIGN	1	9
W13-1P	18X18	ADVISORY SPEED LIMIT SIGN	4	9
W1-10L	36X36	COMBINATION HORIZONTAL ALIGNMENT/INTERSECTION	1	9
W1-10R	36X36	COMBINATION HORIZONTAL ALIGNMENT/INTERSECTION	1	9
W16-8P	8XVARIES	ADVANCE STREET NAME	2	4.8
<b>SITE 1 TOTAL</b>			<b>98.8</b>	



FILE NAME: R:\PRJ\COUNTY\480 STEPHENSON CO HSIP RUN OFF THE ROAD\CADD\CADD\_CIVIL\8480\_SITE 1\STATELINE.DWG

USER NAME = COREY DEETS, P.E.	DESIGNED - MLP	REVISED -
DRAWN - CRD	REVISOR -	REVISION -
PLOT SCALE = 0.5:1	CHECKED -	REVISOR -
PLOT DATE = 1/11/2024	DATE - 01/10/2024	REVISOR -

**CHASTAIN & ASSOCIATES LLC**  
CONSULTING ENGINEERS

6832 STALTER DRIVE, STE100  
ROCKFORD, IL 61108  
PHONE: (815)489-0050  
Toll-free: 1.833.4CHASTAIN  
www.chastainengineers.com



**SITE 1: STATELINE RD & DAVIS RD**

SCALE: 1" = 50' SHEET 1 OF 9 SHEETS STA. TO STA.

F.A. RTE.	SECTION	COUNTY	TOTAL SHEETS	SHEET NO.
	22-00194-00-SP	STEPHENSON	12	3
CONTRACT NO. 85752				
ILLINOIS FED. AID PROJECT				



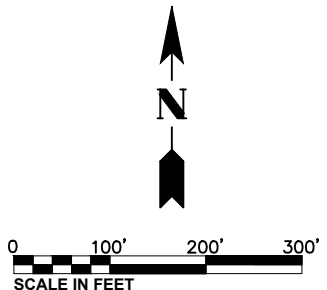
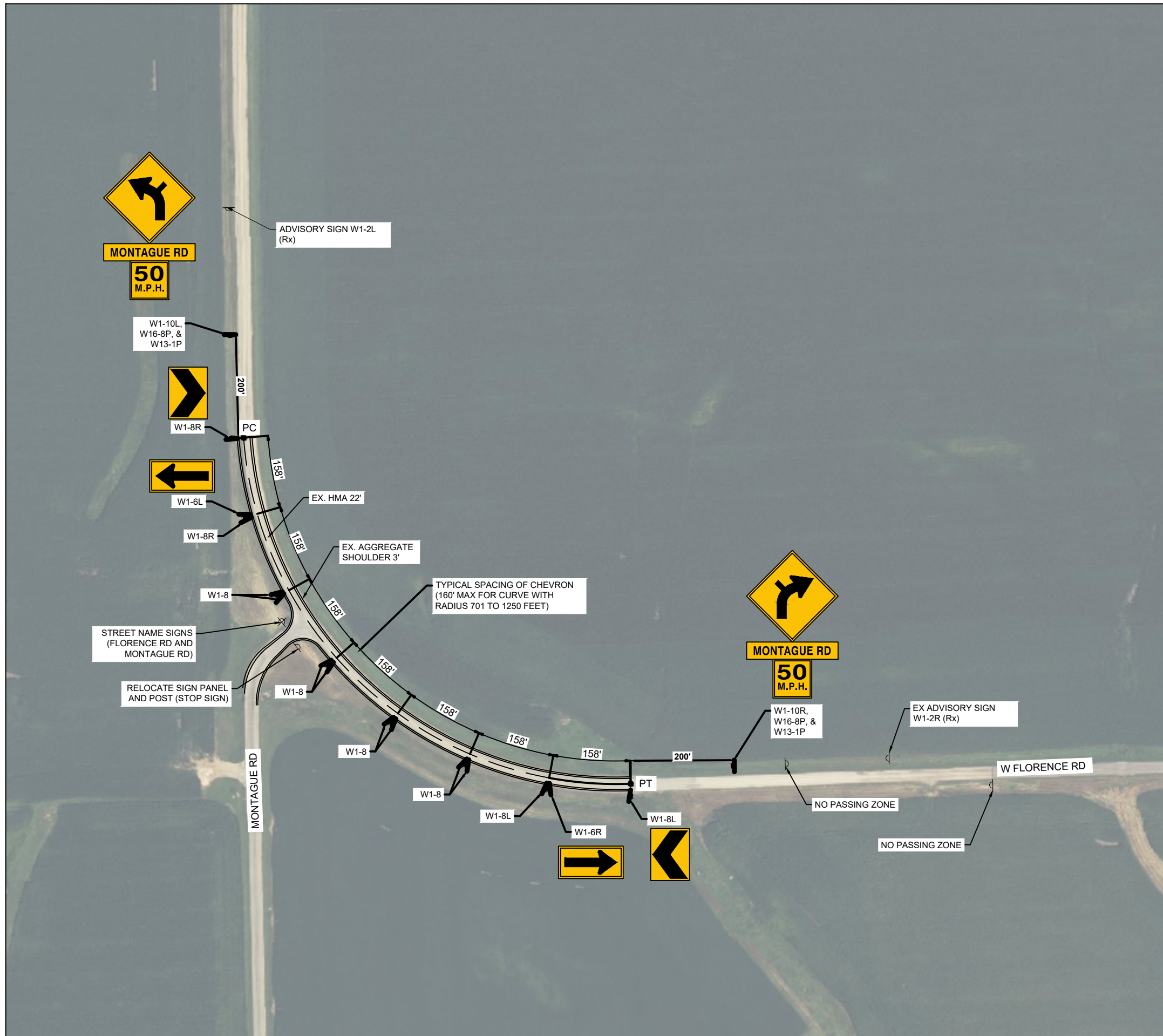
**LEGEND**

-  EXISTING SIGN
-  PROPOSED SIGN

**NOTES:**

1. SEE HIGHWAY STANDARDS 720001, 720006 AND 720011
2. Rx = REMOVE EXISTING SIGN AND POST. SALVAGE MATERIAL TO REMAIN PROPERTY OF STEPHENSON COUNTY. PLACE ON R.O.W. FOR COUNTY PICK-UP.
3. ADVISORY SPEED = 50 MPH
4. EXACT SIGN LOCATIONS WILL BE DETERMINED IN THE FIELD. W1-8 SIGN LOCATIONS SHALL NOT IMPAIR THE VIEW AT SIDE ROADS AND ENTRANCES.

SIGN SIZE		SIGN NAME	QUANTITY OF SIGNS EA	AREA OF SIGNS SF
W1-8L	18X24	LEFT CHEVRON SIGN	6	18
W1-8R	18X24	RIGHT CHEVRON SIGN	6	18
W1-6L	48X24	LEFT ARROW SIGN	1	8
W1-6R	48X24	RIGHT ARROW SIGN	1	8
W1-1L	30X30	COMBINATION HORIZONTAL ALIGNMENT/INTERSECTION		
W1-1R	30X30	RIGHT TURN ARROW SIGN		
W1-1aR	36X36	RIGHT TURN ARROW WITH SPEED LIMIT SIGN		
W1-1aL	36X36	LEFT TURN ARROW WITH SPEED LIMIT SIGN		
W13-1P	18X18	ADVISORY SPEED LIMIT SIGN	2	4.5
W1-10L	36X36	COMBINATION HORIZONTAL ALIGNMENT/INTERSECTION	1	9
W1-10R	36X36	COMBINATION HORIZONTAL ALIGNMENT/INTERSECTION	1	9
W16-8P	8XVARIES	ADVANCE STREET NAME	2	4.8
<b>SITE 2 TOTAL</b>			<b>79.3</b>	



FILE NAME: R:\PRJ\COUNTY480 STEPHENSON CO HSIP RUN OFF THE ROAD\CADD\CADD\_CIVIL\8480\_SITE 2 FLORENCE.DWG

USER NAME = COREY DEETS, P.E.	DESIGNED - MLP	REVISED -
DRAWN - CRD	REVISIONS -	
PLOT SCALE = 0.5:1	CHECKED -	REVISED -
PLOT DATE = 1/11/2024	DATE - 01/10/2024	REVISED -

**CHASTAIN & ASSOCIATES LLC**  
CONSULTING ENGINEERS

6832 STALTER DRIVE, STE100  
ROCKFORD, IL 61108  
PHONE: (815)489-0050  
Toll-free: 1.833.4CHASTAIN  
www.chastainengineers.com

**SITE 2 W FLORENCE RD**

SCALE: 1" = 100'    SHEET 2 OF 9 SHEETS    STA.    TO STA.

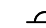

F.A. RTE.	SECTION	COUNTY	TOTAL SHEETS	SHEET NO.
	22-00194-00-SP	STEPHENSON	12	4
CONTRACT NO. 85752				
ILLINOIS FED. AID PROJECT				







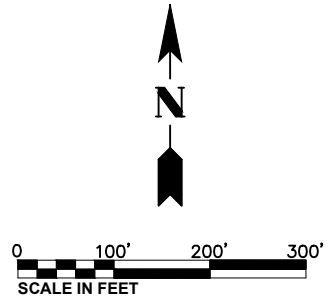
**LEGEND**

-  EXISTING SIGN
-  PROPOSED SIGN

**NOTES:**

1. SEE HIGHWAY STANDARDS 720001, 720006 AND 720011
2. Rx = REMOVE EXISTING SIGN AND POST. SALVAGE MATERIAL TO REMAIN PROPERTY OF STEPHENSON COUNTY. PLACE ON R.O.W. FOR COUNTY PICK-UP.
3. ADVISORY SPEED = 50 MPH
4. EXACT SIGN LOCATIONS WILL BE DETERMINED IN THE FIELD. W1-8 SIGN LOCATIONS SHALL NOT IMPAIR THE VIEW AT SIDE ROADS AND ENTRANCES.

SIGN SIZE		SIGN NAME	QUANTITY OF SIGNS EA	AREA OF SIGNS SF
W1-8L	18X24	LEFT CHEVRON SIGN	10	30
W1-8R	18X24	RIGHT CHEVRON SIGN	10	30
W1-6L	48X24	LEFT ARROW SIGN	1	8
W1-6R	48X24	RIGHT ARROW SIGN	1	8
W1-1L	30X30	COMBINATION HORIZONTAL ALIGNMENT/INTERSECTION		
W1-1R	30X30	RIGHT TURN ARROW SIGN		
W1-1aR	36X36	RIGHT TURN ARROW WITH SPEED LIMIT SIGN		
W1-1aL	36X36	LEFT TURN ARROW WITH SPEED LIMIT SIGN		
W13-1P	18X18	ADVISORY SPEED LIMIT SIGN SIGN	2	4.5
W1-10L	36X36	COMBINATION HORIZONTAL ALIGNMENT/INTERSECTION	1	9
W1-10R	36X36	COMBINATION HORIZONTAL ALIGNMENT/INTERSECTION	1	9
W16-8P	8XVARIES	ADVANCE STREET NAME	2	3.3
<b>SITE 4 TOTAL</b>			<b>101.8</b>	



FILE NAME: R:\PRJ\COUNTY\480 STEPHENSON CO HSIP RUN OFF THE ROAD\CADD\CADD\_CIVIL\8480\_SITE 4 PEARL.DWG

USER NAME = COREY DEETS, P.E.	DESIGNED - MLP	REVISED -
PLOT SCALE = 0.5:1	DRAWN - CRD	REVISED -
PLOT DATE = 1/11/2024	CHECKED -	REVISED -
	DATE - 01/10/2024	REVISED -

**CHASTAIN & ASSOCIATES LLC**  
CONSULTING ENGINEERS

6832 STALTER DRIVE, STE100  
ROCKFORD, IL 61108  
PHONE: (815)489-0050  
Toll-free: 1.833.4CHASTAIN  
www.chastainengineers.com



**SITE 4 W PEARL CITY RD**

SCALE: 1" = 100'    SHEET 3 OF 11 SHEETS    STA.    TO STA.

F.A. RTE.	SECTION	COUNTY	TOTAL SHEETS	SHEET NO.
	22-00194-00-SP	STEPHENSON	12	6
CONTRACT NO. 85752				
ILLINOIS FED. AID PROJECT				

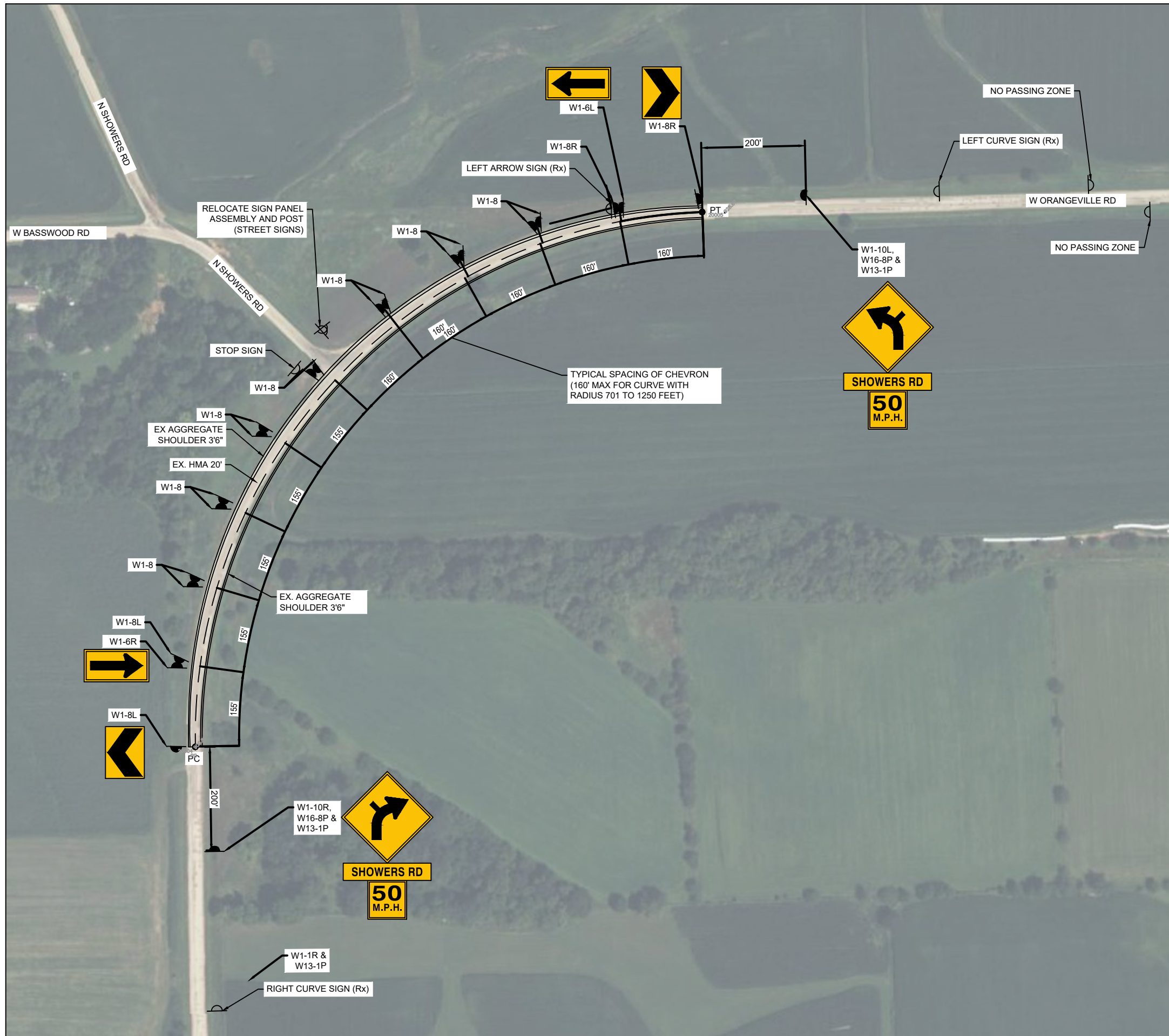


**LEGEND**

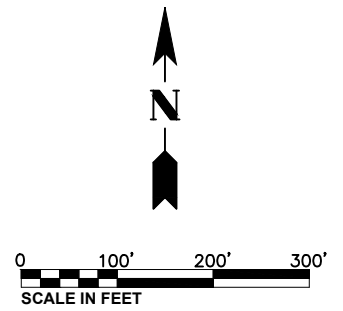
-  EXISTING SIGN
-  PROPOSED SIGN

**NOTES:**

1. SEE HIGHWAY STANDARDS 720001, 720006 AND 720011
2. Rx = REMOVE EXISTING SIGN AND POST. SALVAGE MATERIAL TO REMAIN PROPERTY OF STEPHENSON COUNTY. PLACE ON R.O.W. FOR COUNTY PICK-UP.
3. ADVISORY SPEED = 50 MPH
4. EXACT SIGN LOCATIONS WILL BE DETERMINED IN THE FIELD. W1-8 SIGN LOCATIONS SHALL NOT IMPAIR THE VIEW AT SIDE ROADS AND ENTRANCES.



SIGN SIZE		SIGN NAME	QUANTITY OF SIGNS EA	AREA OF SIGNS SF
W1-8L	18X24	LEFT CHEVRON SIGN	9	27
W1-8R	18X24	RIGHT CHEVRON SIGN	9	27
W1-6L	48X24	LEFT ARROW SIGN	1	8
W1-6R	48X24	RIGHT ARROW SIGN	1	8
W1-1L	30X30	COMBINATION HORIZONTAL ALIGNMENT/INTERSECTION		
W1-1R	30X30	RIGHT TURN ARROW SIGN		
W1-1aR	36X36	RIGHT TURN ARROW WITH SPEED LIMIT SIGN		
W1-1aL	36X36	LEFT TURN ARROW WITH SPEED LIMIT SIGN		
W13-1P	18X18	ADVISORY SPEED LIMIT SIGN SIGN	2	4.5
W1-10L	36X36	COMBINATION HORIZONTAL ALIGNMENT/INTERSECTION	1	9
W1-10R	36X36	COMBINATION HORIZONTAL ALIGNMENT/INTERSECTION	1	9
W16-8P	8XVARIES	ADVANCE STREET NAME	2	4.70
<b>SITE 5 TOTAL</b>				<b>97.20</b>



FILE NAME: R:\PRJ\COUNTY480 STEPHENSON CO HSIP RUN OFF THE ROAD\CADD\CADD\_CIVIL\8480\_SITE 5 ORANGVILLE.DWG

USER NAME = COREY DEETS, P.E.	DESIGNED - MLP	REVISED -
DRAWN - CRD	REVISED -	
PLOT SCALE = 0.5:1	CHECKED -	REVISED -
PLOT DATE = 1/11/2024	DATE - 01/10/2024	REVISED -

**CHASTAIN & ASSOCIATES LLC**  
CONSULTING ENGINEERS

6832 STALTER DRIVE, STE100  
ROCKFORD, IL 61108  
PHONE: (815)489-0050  
Toll-free: 1.833.4CHASTAIN  
www.chastainengineers.com

<b>SITE 5: W ORANGVILLE RD</b>			
SCALE: 1" = 100'	SHEET 5	OF 9 SHEETS	STA. TO STA.

F.A. RTE.	SECTION	COUNTY	TOTAL SHEETS	SHEET NO.
	22-00194-00-SP	STEPHENSON	12	7
CONTRACT NO. 85752				
ILLINOIS FED. AID PROJECT				



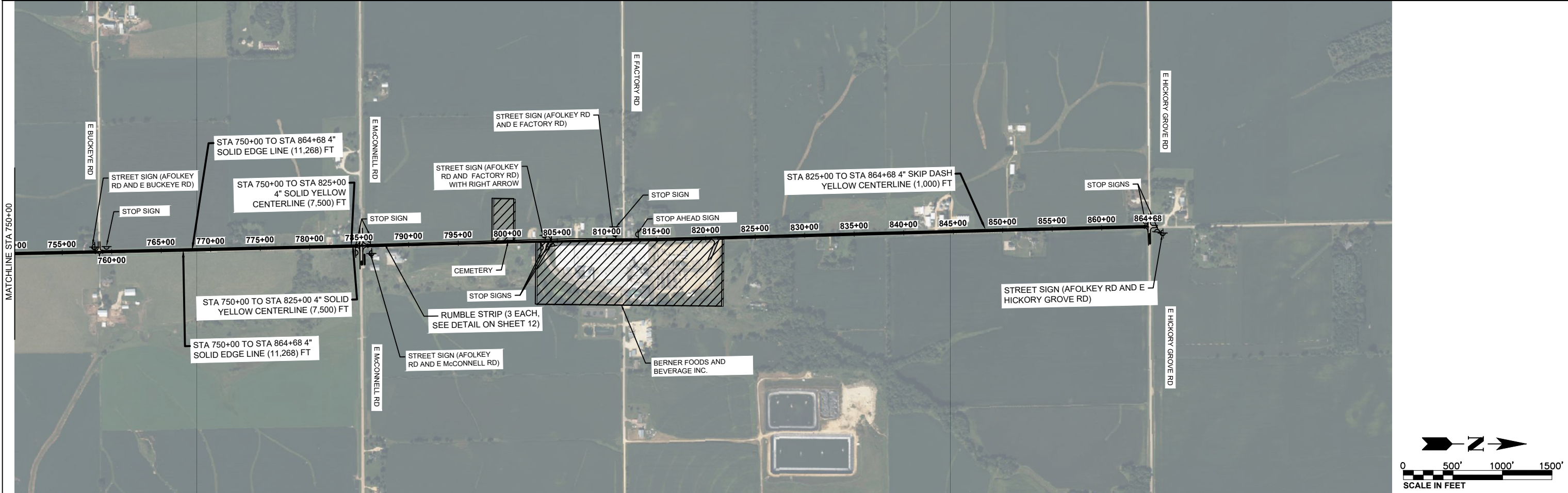
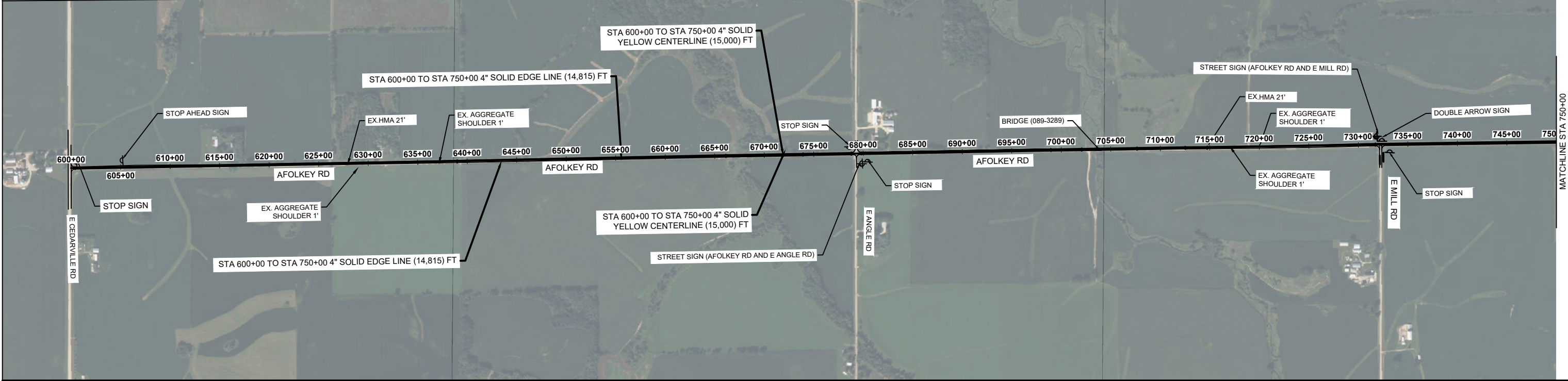




**LEGEND**

EXISTING SIGN

NOTES:  
 1. SEE STANDARD 781001-05  
 2. GAP PAVEMENT MARKING AT INTERSECTIONS.

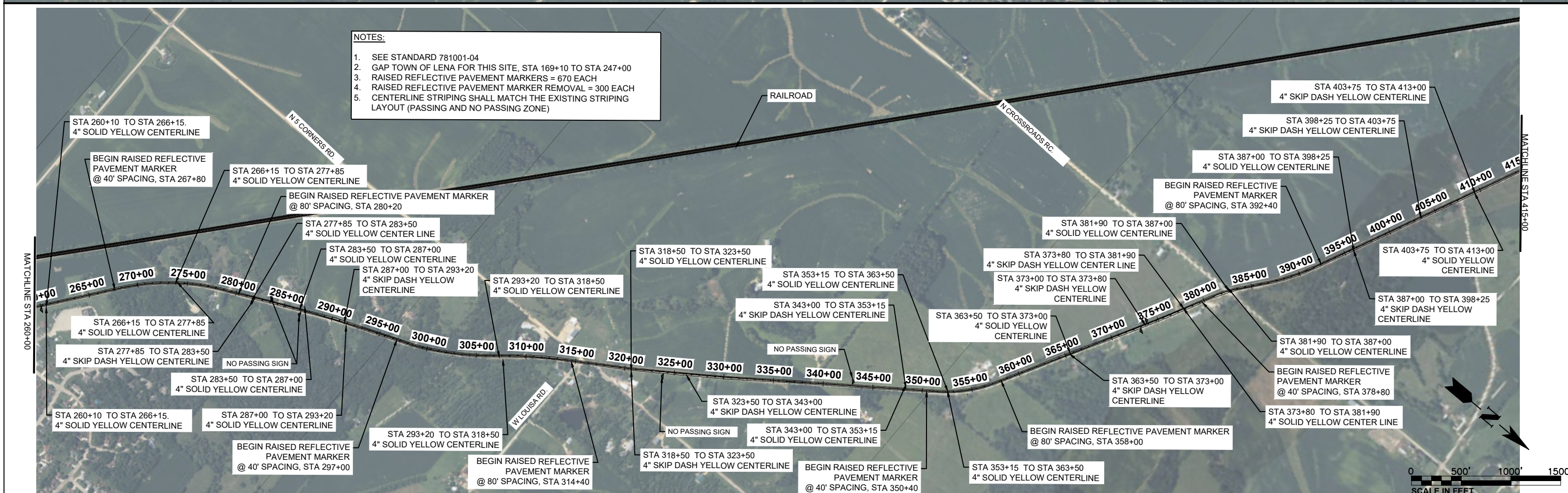
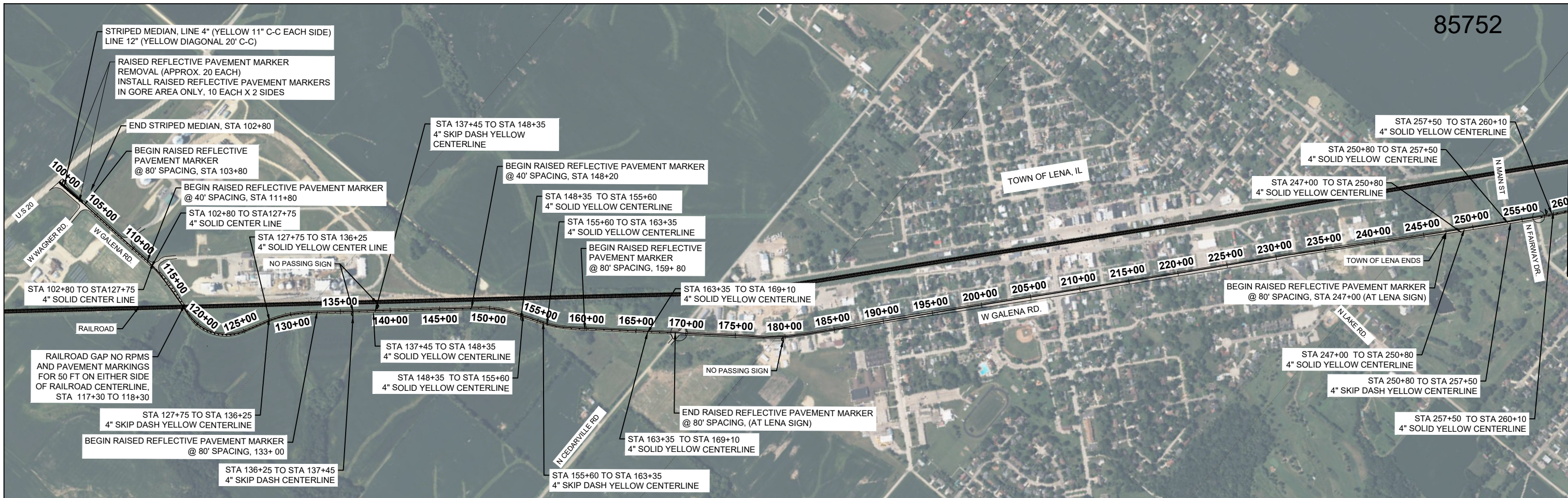


FILE NAME: R:\PJ\COUNTY\480 STEPHENSON CO HSIP RUN OFF THE ROAD\CADD\CADD\_CIVIL\8480\_SITE 7 AFOLKEY.DWG



USER NAME = COREY DEETS, P.E. DRAWN = CRD PLOT SCALE = 0.5:1 PLOT DATE = 1/11/2024	DESIGNED = MLP	REVISED =	<b>CHASTAIN &amp; ASSOCIATES LLC</b> CONSULTING ENGINEERS 6832 STALTER DRIVE, STE100 ROCKFORD, IL 61108 PHONE: (815)489-0050 Toll-free: 1.833.4CHASTAIN www.chastainengineers.com	<b>SITE 7 AFOLKEY ROAD - CENTER LINE - PAVEMENT MARKING</b>		F.A. RTE.	SECTION	COUNTY	TOTAL SHEETS	SHEET NO.	
	CHECKED =	REVISED =				22-00194-00-SP	STEPHENSON	12	9		
	DATE = 01/10/2024	REVISED =		SCALE: 1" = 500'	SHEET 7	OF 9 SHEETS	STA. 600+00	TO STA. 846+68	CONTRACT NO. 85752		
									ILLINOIS FED. AID PROJECT		





- NOTES:**
1. SEE STANDARD 781001-04
  2. GAP TOWN OF LENA FOR THIS SITE, STA 169+10 TO STA 247+00
  3. RAISED REFLECTIVE PAVEMENT MARKERS = 670 EACH
  4. RAISED REFLECTIVE PAVEMENT MARKER REMOVAL = 300 EACH
  5. CENTERLINE STRIPING SHALL MATCH THE EXISTING STRIPING LAYOUT (PASSING AND NO PASSING ZONE)

FILE NAME: R:\PRJ\COUNTY\800 STEPHENSON CO HSIP RUN OFF THE ROAD\CD\ADD\_CIVIL\8480\_SITE 8 GALENA.DWG

USER NAME = COREY DEETS, P.E.	DESIGNED - MLP	REVISED -
DRAWN - CRD	REVISOR -	
PLOT SCALE = 0.5:1	CHECKED -	REVISED -
PLOT DATE = 1/11/2024	DATE - 01/10/2024	REVISED -

**CHASTAIN & ASSOCIATES LLC**  
CONSULTING ENGINEERS

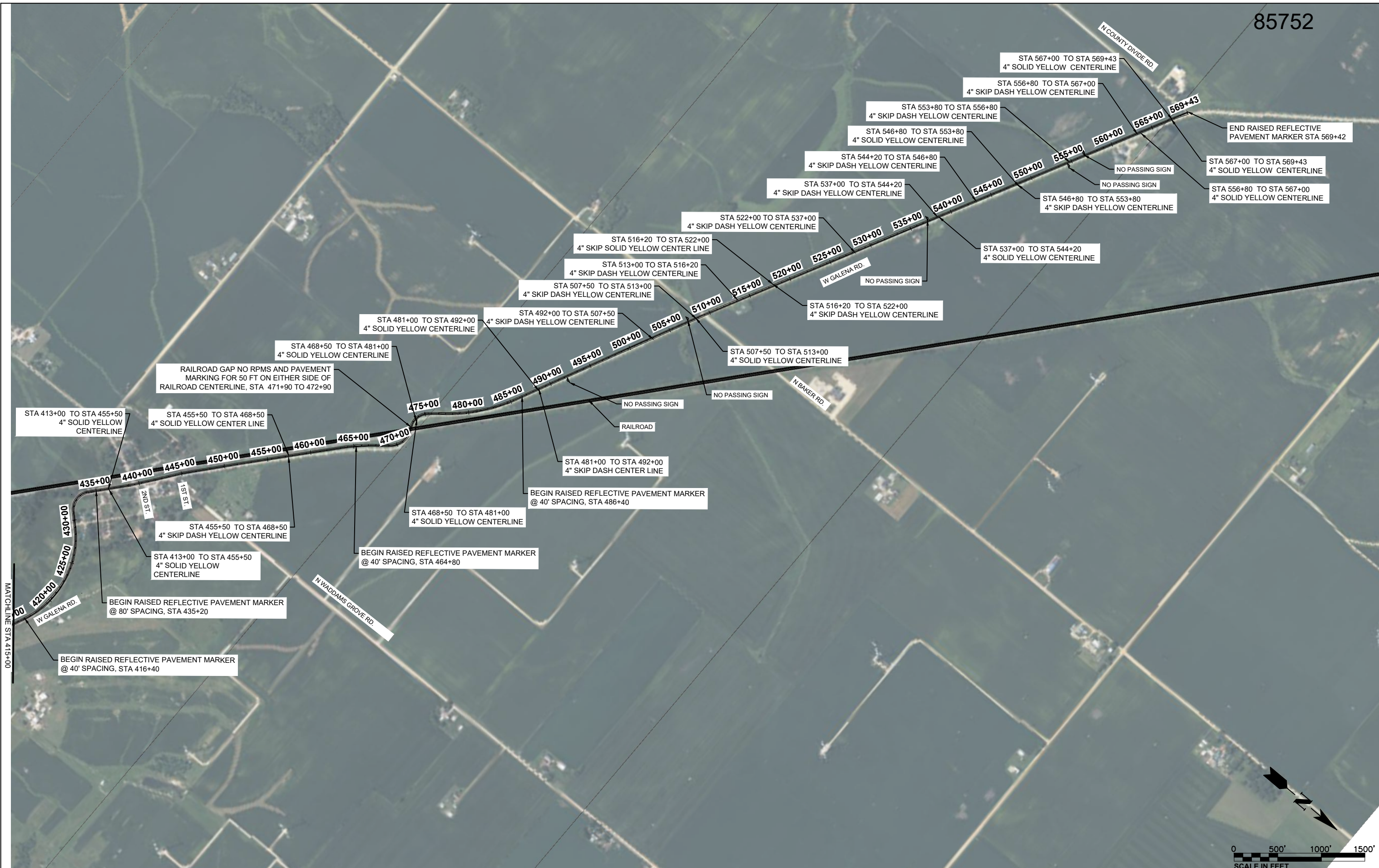
6832 STALTER DRIVE, STE100  
ROCKFORD, IL 61108  
PHONE: (815)489-0050  
Toll-free: 1.833.4CHASTAIN  
www.chastainengineers.com

**SITE 8: W GALENA RD - RAISED REFLECTIVE PAVEMENT MARKER**

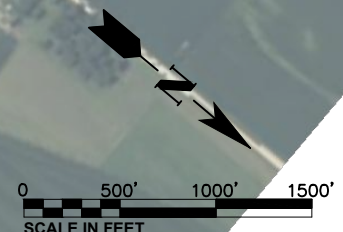
SCALE: 1" = 500'    SHEET 8 OF 9 SHEETS    STA. 100+00 TO STA. 415+00

F.A. RTE.	SECTION	COUNTY	TOTAL SHEETS	SHEET NO.
	22-00194-00-SP	STEPHENSON	12	10
CONTRACT NO. 85752				
ILLINOIS FED. AID PROJECT				



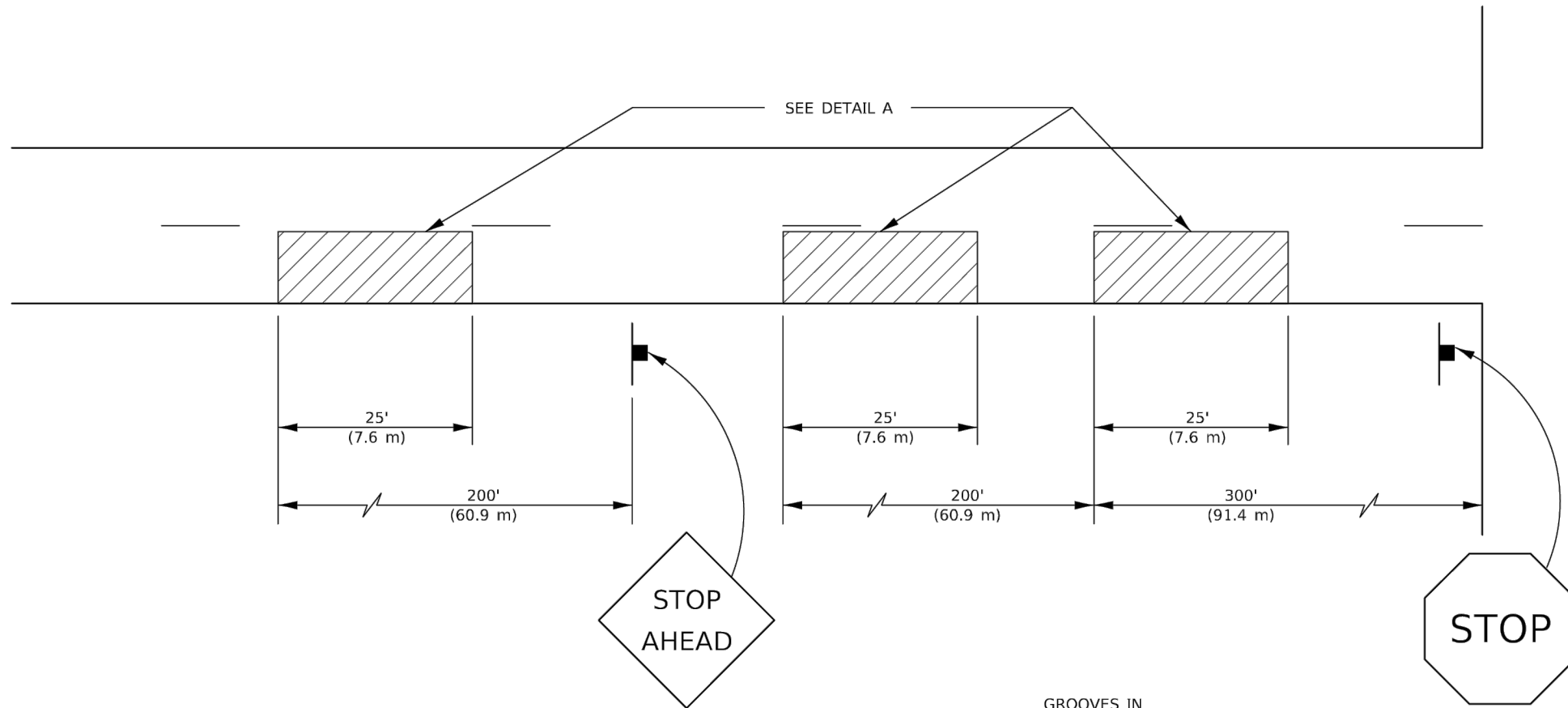


FILE NAME: R:\PRJ\COUNTY\480 STEPHENSON CO HSIP RUN OFF THE ROAD\CD\CDADD\_CIVIL\8480\_SITE 8 GALENA.DWG

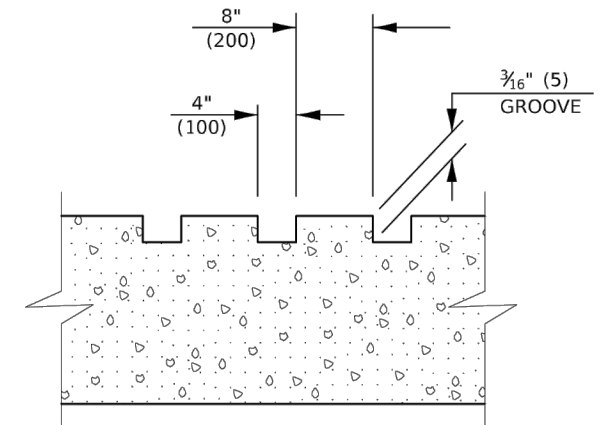
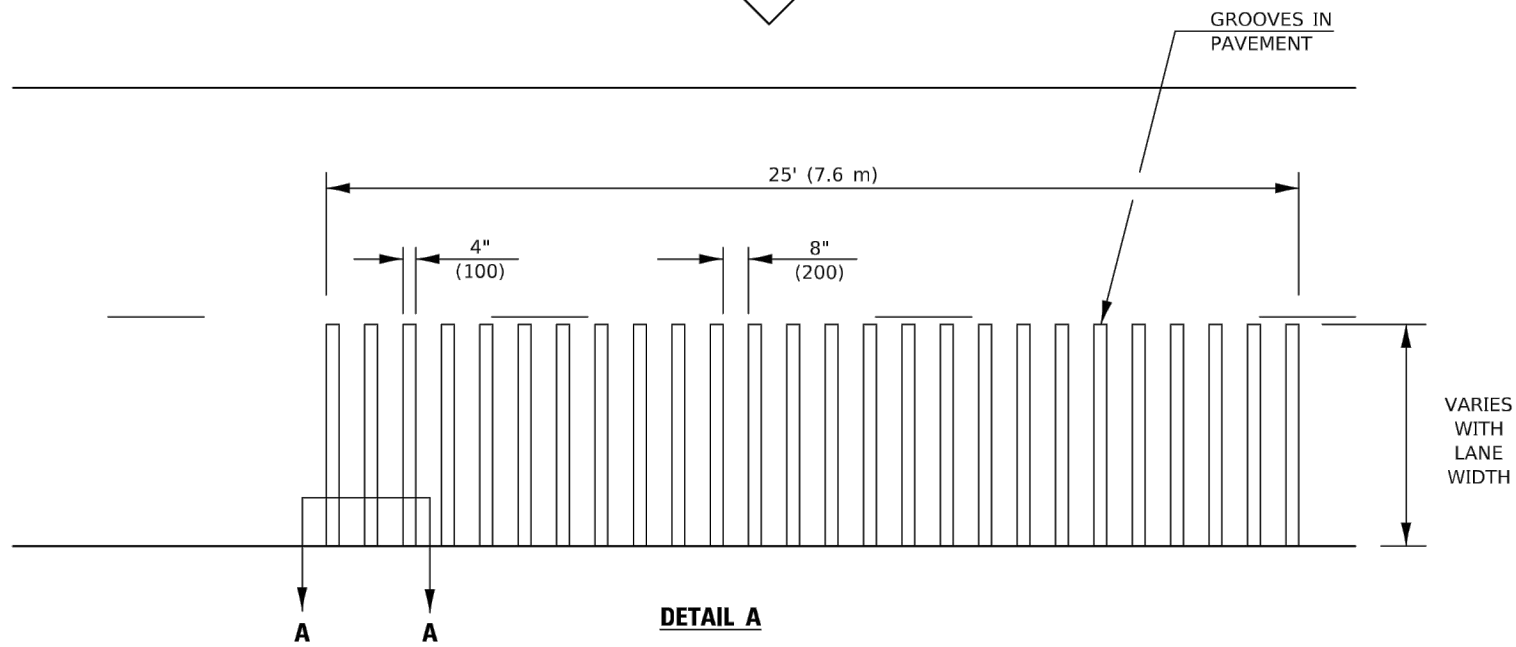


USER NAME = COREY DEETS, P.E. PLOT SCALE = 0.5:1 PLOT DATE = 1/11/2024	DESIGNED - MLP	REVISED -	<b>CHASTAIN &amp; ASSOCIATES LLC</b> CONSULTING ENGINEERS 6832 STALTER DRIVE, STE100 ROCKFORD, IL 61108 PHONE: (815)489-0050 Toll-free: 1.833.4CHASTAIN www.chastainengineers.com	<b>SITE 8: W GALENA RD - RAISED REFLECTIVE PAVEMENT MARKER</b>		F.A. RTE.	SECTION	COUNTY	TOTAL SHEETS	SHEET NO.
	DRAWN - CRD	REVISED -				22-00194-00-SP	STEPHENSON	12	11	
	CHECKED -	REVISED -		CONTRACT NO. 85752			ILLINOIS	FED. AID PROJECT		
	DATE - 01/10/2024	REVISED -		SCALE: 1" = 500'	SHEET 9	OF 9 SHEETS	STA. 415+00	TO STA. 569+41		





- GENERAL NOTES**
1. ALL GROOVES SHALL BE CONSTRUCTED USING A 4" (100 mm) MILLING HEAD OR SERIES OF 4" (100 mm) MILLING HEADS CAPABLE OF CUTTING TO THE SPECIFIED DEPTH OR ANY VARIABLE DEPTH.
  2. THIS WORK WILL BE MEASURED FOR PAYMENT PER EACH 25' (7.6 m) INDIVIDUAL RUMBLE STRIP APPLIED AND PAID FOR AT THE CONTRACT UNIT PRICE EACH FOR RUMBLE STRIP, WHICH PRICE SHALL INCLUDE ALL EQUIPMENT, MATERIAL, LABOR AND OTHER ITEMS REQUIRED TO INSTALL EACH INDIVIDUAL RUMBLE STRIP.



**SECTION A-A**

Note: All dimensions are in INCHES (millimeters) unless otherwise shown.

FILE NAME: R:\P\J\COUNTY\8480\STEPHENSON CO HSIP RUN OFF THE ROAD\CADD\CADD\_CIVIL\8480\_DETAILS.DWG

USER NAME = PjersonTJ	DESIGNED -	REVISED - 11/06
	DRAWN -	REVISED -
PLOT SCALE = 40.0000 ' / in.	CHECKED -	REVISED -
PLOT DATE = 1/26/2022	DATE -	REVISED -

**STATE OF ILLINOIS  
DEPARTMENT OF TRANSPORTATION**

**RUMBLE STRIP (ADVANCE OF INTERSECTIONS)**

SCALE: N.T.S. SHEET 1 OF 1 SHEETS STA. TO STA.

**DISTRICT 5 DETAIL NO. Z0055300**

F.A.S. RTE.	SECTION	COUNTY	TOTAL SHEETS	SHEET NO.
	22-00194-00-SP	STEPHENSON	12	12
CONTRACT NO 85752			ILLINOIS FED. AID PROJECT	