

STATE OF ILLINOIS
DEPARTMENT OF TRANSPORTATION

F.A.P. RTE.	SECTION	COUNTY	TOTAL SHEETS	SHEET NO.
95, 328A, 328	D7 DEMOLITION 2018-1	EFF., CLAY	6	1
			ILLINOIS	CONTRACT NO. 74836

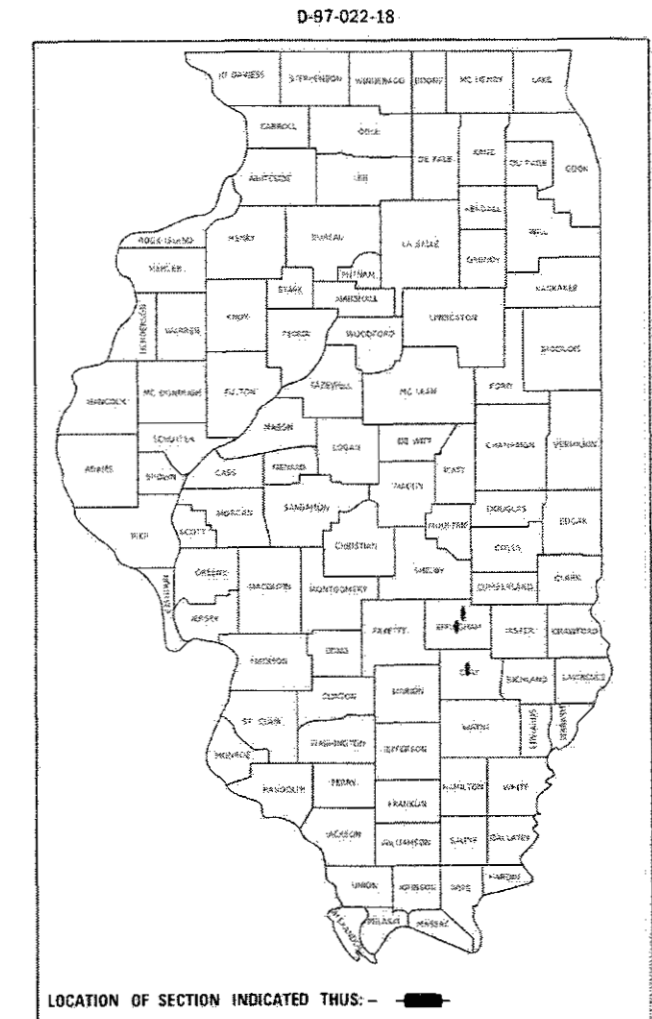
FOR INDEX OF SHEETS, SEE SHEET NO. 2

PROPOSED HIGHWAY PLANS

FAP ROUTE 95, 328A, 328 (US 40, IL 33, US 45)
SECTION D7 DEMOLITION 2018-1

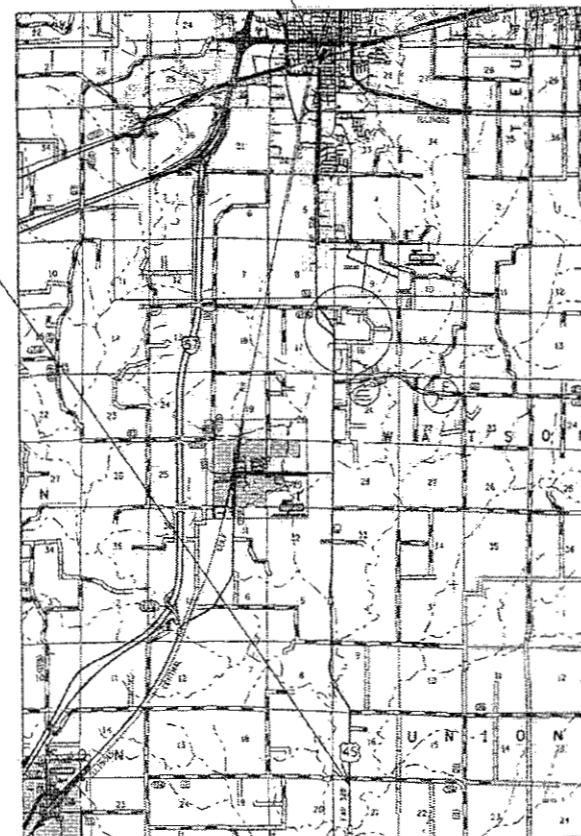
BUILDING DEMOLITION
EFFINGHAM & CLAY COUNTY

C-97-033-18

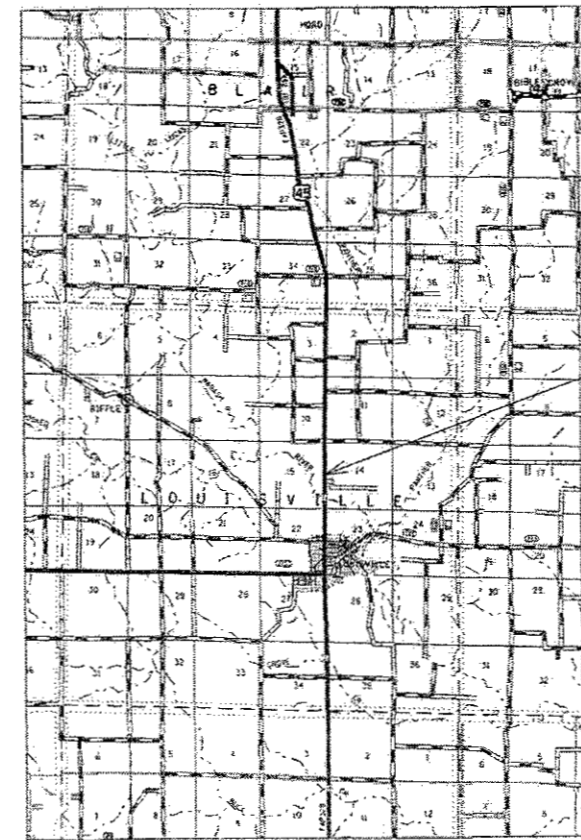


PROJECT LOCATION
BUILDING #1

PROJECT LOCATION
BUILDING #2

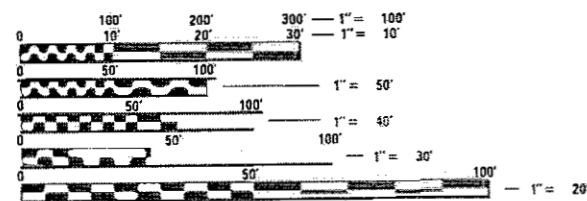


EFFINGHAM COUNTY



CLAY COUNTY

PROJECT LOCATION
BUILDING #3



FULL SIZE PLANS HAVE BEEN PREPARED USING STANDARD ENGINEERING SCALES. REDUCED SIZED PLANS WILL NOT CONFORM TO STANDARD SCALES. IN MAKING MEASUREMENTS ON REDUCED PLANS, THE ABOVE SCALES MAY BE USED.

J.U.L.I.E.
JOINT UTILITY LOCATION INFORMATION FOR EXCAVATION
1-800-892-0123
OR 811

PROJECT ENGINEER: DEBRA BARRETT
PROJECT MANAGER: LEAH HILLE

CONTRACT NO. 74836

STATE OF ILLINOIS
DEPARTMENT OF TRANSPORTATION

SUBMITTED DECEMBER 13 20 17
Jeffrey A. Southwick
REGIONAL ENGINEER

Feb 2 20 18
ENGINEER OF DESIGN AND ENVIRONMENT

Paul P. [Signature]
DIRECTOR OF PROGRAM DEVELOPMENT

PRINTED BY THE AUTHORITY
OF THE STATE OF ILLINOIS

GENERAL NOTES

THIS PROJECT IS LOCATED AT US 40 & 3RD STREET & ALONG US 45 IN EFFINGHAM AND CLAY COUNTIES. THE WORK INCLUDED IN THIS SECTION CONSISTS OF BUILDING DEMOLITION, REMOVAL OF ASBESTOS, AND OTHER WORK NECESSARY TO COMPLETE THIS SECTION.

ALL PARCELS ARE EXPECTED TO CONTAIN NON-FRIABLE ASBESTOS.

IF ANY OF THE LOCATIONS HAVE A BASEMENT, THE FLOOR OF THE BASEMENT SHALL BE BROKEN PRIOR TO BACKFILLING TO ALLOW FOR DRAINAGE.

THE CONTRACTOR SHALL REMOVE THE HD MOTORS BUILDING IN EFFINGHAM FIRST. A PERMIT FROM THE CITY OF EFFINGHAM WILL BE REQUIRED TO REMOVE THE BUILDING.

INDEX OF SHEETS

SHEET NO	TITLE
1	COVER SHEET
2	GENERAL NOTES & INDEX OF SHEETS
3	SUMMARY OF QUANTITIES
4-6	PLAN SHEETS

MODEL: Default
 FILE NAME: p:\1110848\BID\NITEC_illinois.gov-PWIDOT\Documents\DOT_Offices\District 7\Projects\74836\CADD\DATA\CAD\Sheet\74836-PL-GENNOTE.dgn

USER NAME = nillelm	DESIGNED -	REVISED -
	DRAWN -	REVISED -
PLOT SCALE = 100.0000 ' / in.	CHECKED -	REVISED -
PLOT DATE = 1/5/2018	DATE -	REVISED -

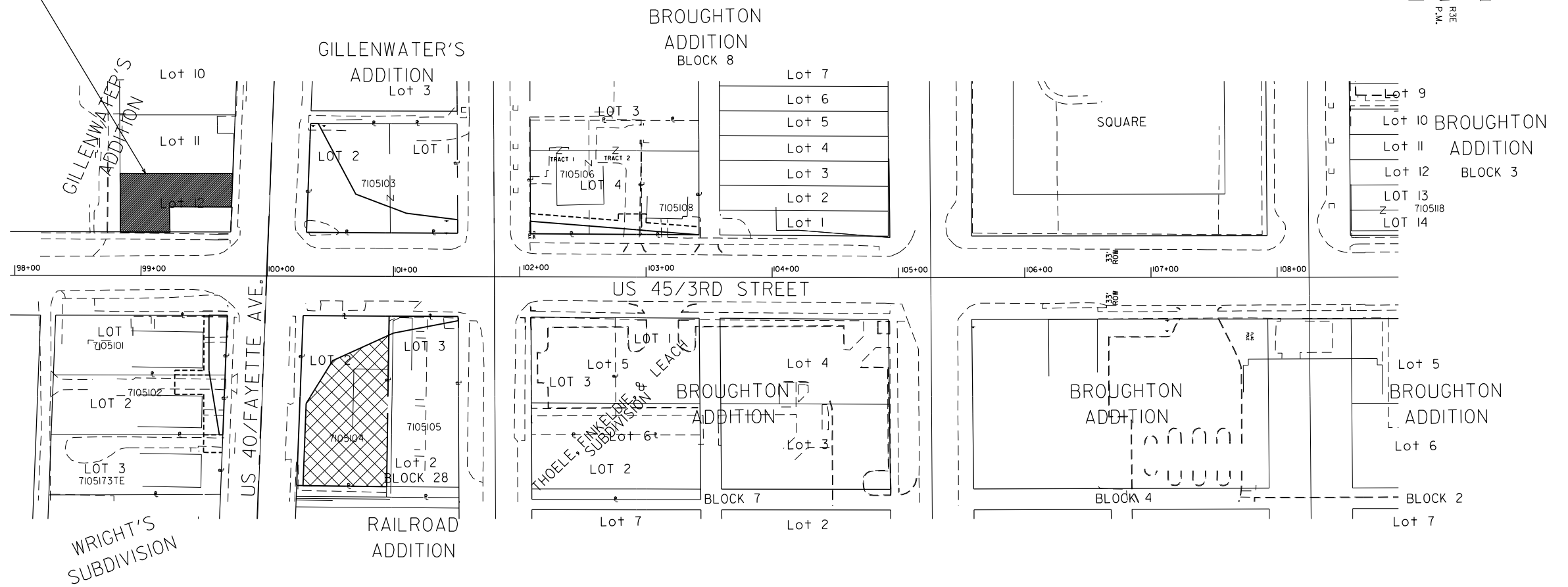
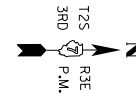
**STATE OF ILLINOIS
DEPARTMENT OF TRANSPORTATION**

**GENERAL NOTES &
INDEX OF SHEETS**

SCALE: NO SCALE SHEET OF SHEETS STA. TO STA.

F.A.P. RTE.	SECTION	COUNTY	TOTAL SHEETS	SHEET NO.
*	D7 DEMOLITION 2018-1	EFF., CLAY	6	2
* 95, 328A, 328		CONTRACT NO. 74836		
		ILLINOIS	FED. AID PROJECT	

PARCEL #7305210 (H&D MOTOR)
111 EAST FAYETTE AVENUE
EFFINGHAM, IL 62401



MODEL: Default
FILE: h:\m\c\p\ul\08\BEBID\NTEC\Illinois.gov\PW\DOT\Documents\DOT_Offices\Director_7\Projects\174836\CADD\data\CADD\records\174836\plan_building_1.dgn

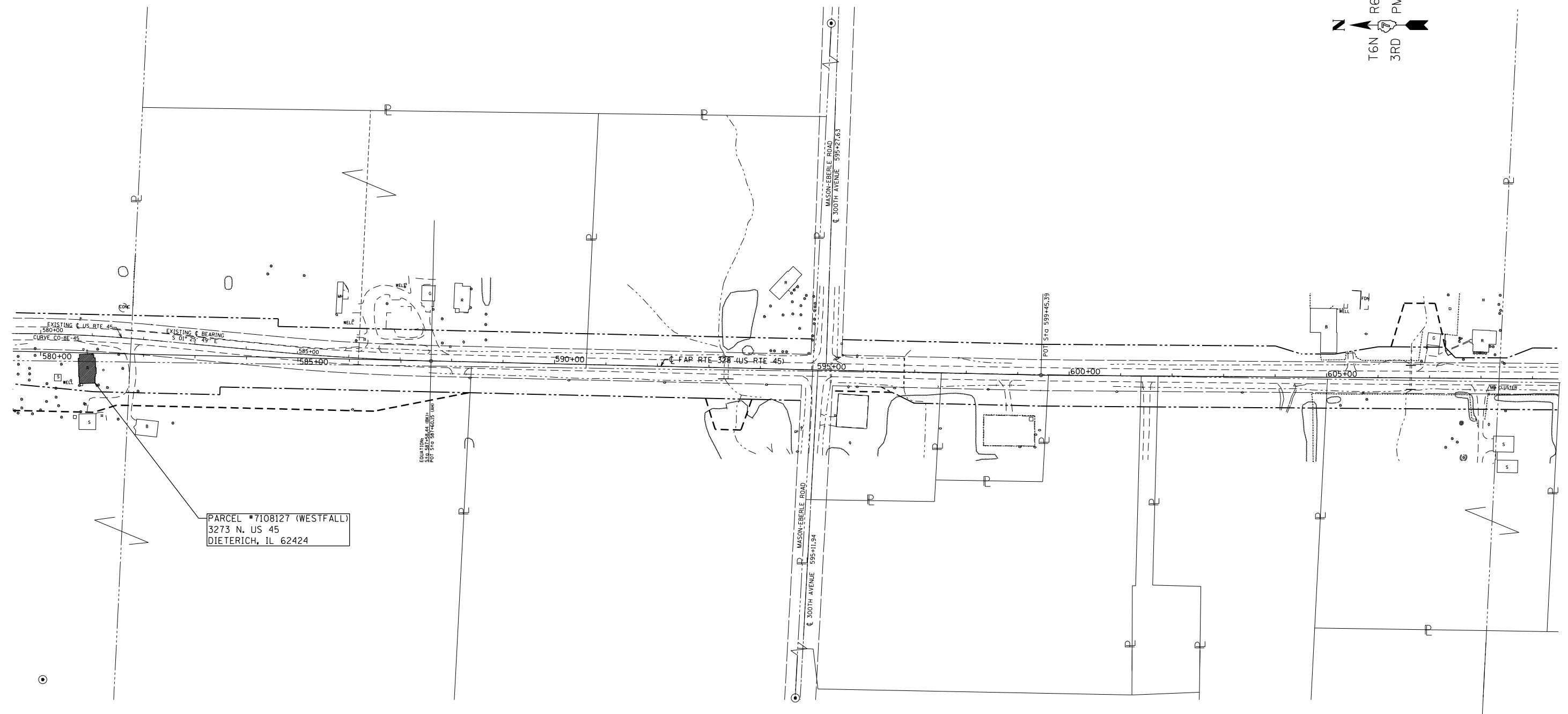
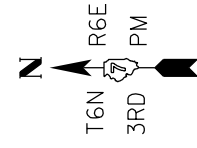
USER NAME = steffemk	DESIGNED -	REVISED -
	DRAWN -	REVISED -
PLOT SCALE = 100.0000' / in.	CHECKED -	REVISED -
PLOT DATE = 12/18/2017	DATE -	REVISED -

**STATE OF ILLINOIS
DEPARTMENT OF TRANSPORTATION**

**PLAN VIEW BUILDING NO.1
EFFINGHAM COUNTY**

SCALE: SHEET OF SHEETS STA. TO STA.

F.A.P. RTE.	SECTION	COUNTY	TOTAL SHEETS	SHEET NO.
*	D7 DEMOLITION 2018-1	EFF., CLAY	6	4
* 95, 328A, 328			CONTRACT NO. 74836	
ILLINOIS FED. AID PROJECT				



PARCEL #7108127 (WESTFALL)
3273 N. US 45
DIETERICH, IL 62424

MODEL: Default
FILE NAME: P:\ILLINOIS\BIDDING\ITEC\Illinois.gov\PWIDOT\Documents\DOT_Offices\District 7\Projects\1836\CADD\AutoCAD\Drawings\1836-PWIDOT_Building_2.dwg

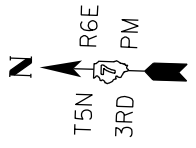
USER NAME = steffenmk	DESIGNED -	REVISED -
	DRAWN -	REVISED -
PLOT SCALE = 100.0000' / in.	CHECKED -	REVISED -
PLOT DATE = 12/18/2017	DATE -	REVISED -

**STATE OF ILLINOIS
DEPARTMENT OF TRANSPORTATION**

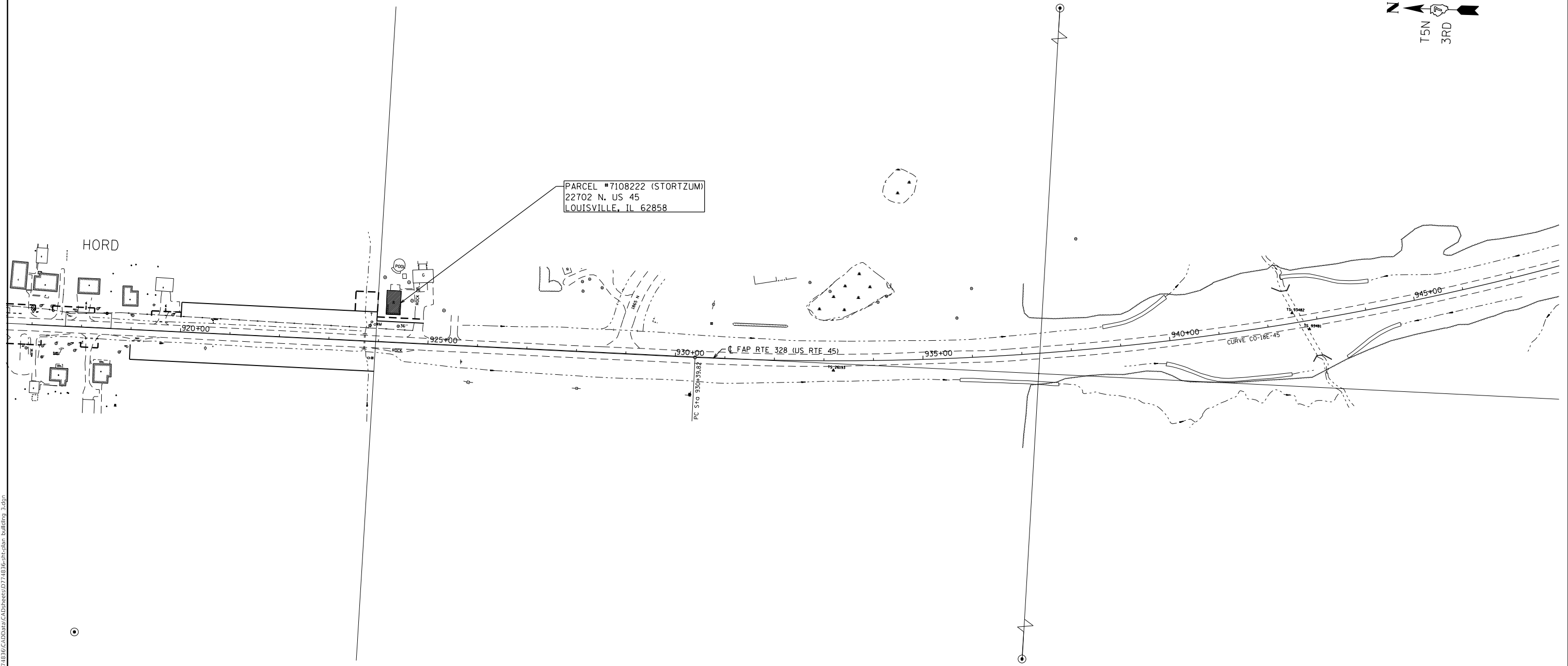
**PLAN VIEW BUILDING NO. 2
EFFINGHAM COUNTY**

SCALE: SHEET OF SHEETS STA. TO STA.

F.A.P. RTE.	SECTION	COUNTY	TOTAL SHEETS	SHEET NO.
* 95, 328A, 328	D7 DEMOLITION 2018-1	EFF., CLAY	6	5
ILLINOIS FED. AID PROJECT			CONTRACT NO. 74836	



PARCEL #7108222 (STORTZUM)
22702 N. US 45
LOUISVILLE, IL 62858



MODEL: Default
FILE NAME: P:\IL\08\EBID\NTEC\Illinois.gov\PWD\DOT\Documents\DOT Offices\District 7\Projects\74836\CADD\Drawings\CAD\Drawings\74836-P1-C1-Plan_Building_3.dgn

USER NAME = steffemk	DESIGNED -	REVISED -
	DRAWN -	REVISED -
PLOT SCALE = 100.0000' / in.	CHECKED -	REVISED -
PLOT DATE = 12/18/2017	DATE -	REVISED -

**STATE OF ILLINOIS
DEPARTMENT OF TRANSPORTATION**

PLAN VIEW BUILDING NO. 3 CLAY COUNTY			
SCALE:	SHEET	OF SHEETS	STA. TO STA.

F.A.P. RTE.	SECTION	COUNTY	TOTAL SHEETS	SHEET NO.
*	D7 DEMOLITION 2018-1	EFF., CLAY	6	6
* 95, 328A, 328		CONTRACT NO. 74836		
ILLINOIS FED. AID PROJECT				