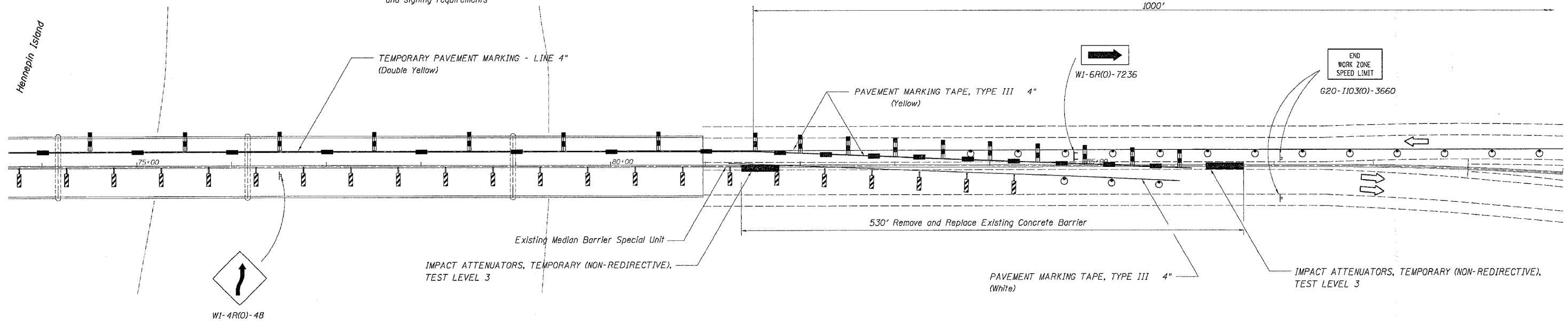


F.A.I. RTE.	SECTION	COUNTY	TOTAL SHEETS	SHEET NO.
180	06-3,78-118M-1		15	4
STA.		TO STA.		
FED. ROAD DIST. NO.		ILLINOIS	FED. AID PROJECT	
		Putnam Counties		

Traffic Control Plan

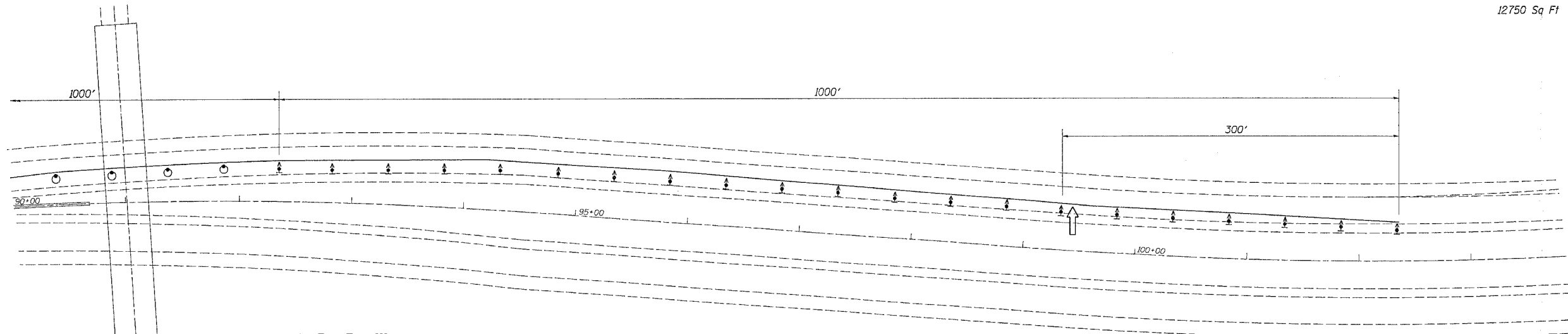
Stage I

Refer to Traffic Control & Protection Standard 701431-03 for additional details and signing requirements



WORKZONE PAVEMENT MARKING REMOVAL

Stage I	6250 Sq Ft
Stage II	6500 Sq Ft
Total	12750 Sq Ft



Pavement Marking Tape Type III

Stage I		Yellow	
White			
West Taper	1000'	West Tangent	1000'
West Tangent	1000'	West X-Over	365'
West X-Over	365'	East X-Over	475'
East X-Over	475'	East Tangent	1000'
	2860'	East Taper	1000'
			3840'

TEMPORARY PAVEMENT MARKING - LINE 4" (Double Yellow)

Structure Stage I Traffic 6166'

TEMPORARY PAVEMENT MARKING - LINE 4" (White)

Structure Stage I Traffic 6166'

REVISIONS	
NAME	DATE

ILLINOIS DEPARTMENT OF TRANSPORTATION

SCALE: VERT. HORIZ.
DATE

DRAWN BY
CHECKED BY

PLOT DATE = Mon, Dec 15, 11:55:47, 2008
 PLOT NAME = C:\Users\jgibson\Documents\10760001.dgn
 PLOT SCALE = 5/8"=1'-0"
 REFERENCE = *REF*