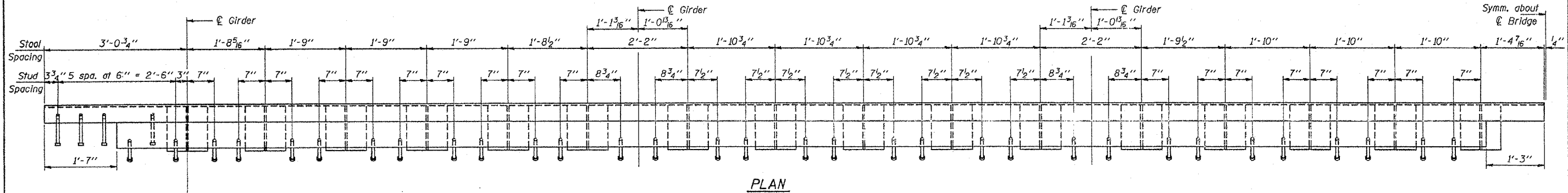
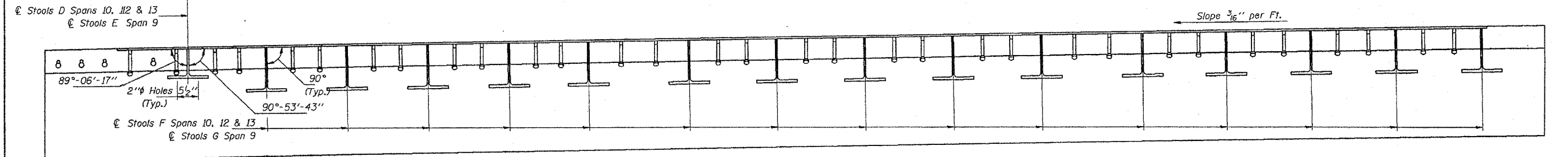


STATE OF ILLINOIS  
DEPARTMENT OF TRANSPORTATION

CONTRACT NO. 64945				
F.A.I. RTE.	SECTION	COUNTY	TOTAL SHEETS	SHEET NO.
180	106-3-78-1B-M-1		15	13
STA.		TO STA.		
FED. AID DIST. NO.		ILLINOIS	FED. AID PROJECT	
		Putnam Counties		

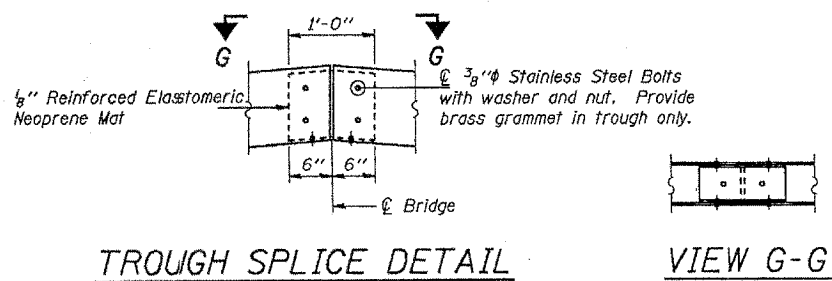


PLAN



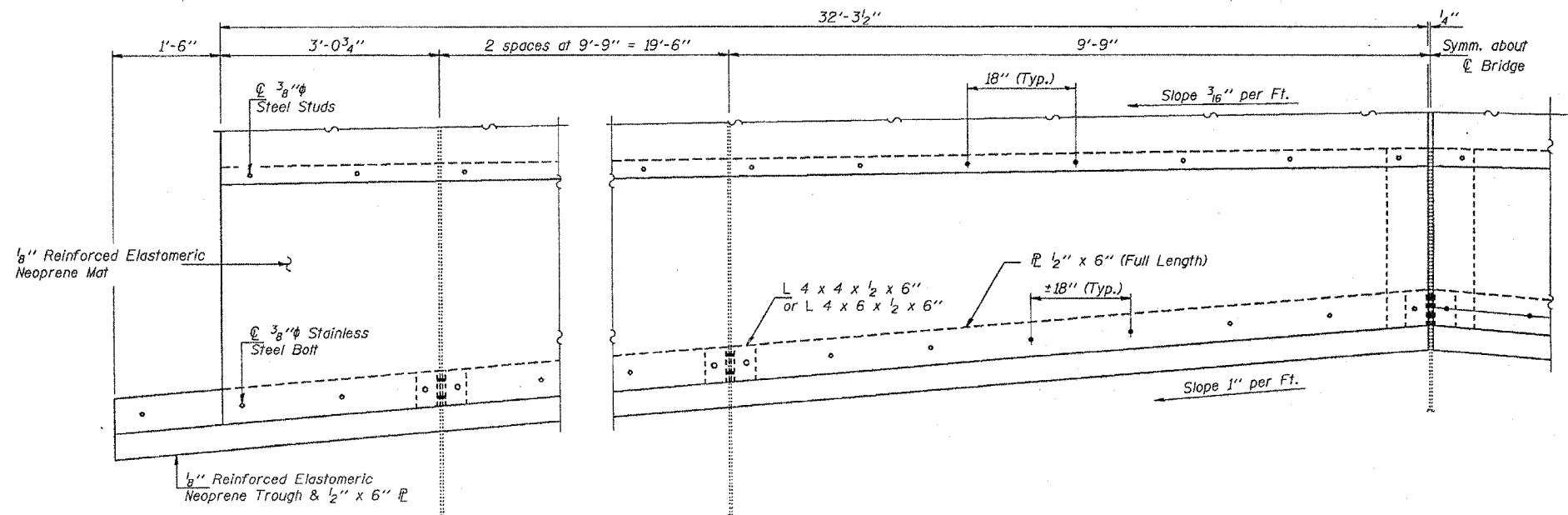
ELEVATION

SPANS 9, 10, 12 & 13



TROUGH SPLICE DETAIL

VIEW G-G



SECTION D-D

DESIGNED	CHM
CHECKED	Paul Summer
DRAWN	Paul Summer
CHECKED	CHM

EXAMINED	November 30 1992 Paul E. Hoover ENGINEER OF STRUCTURAL SERVICES
PASSED	
APPROVED	ENGINEER OF BRIDGES AND STRUCTURES
	DIRECTOR OF HIGHWAYS

**FOR INFORMATION ONLY**

FINGER PLATE DETAILS  
F.A.I. RT. 180 SEC. (06-3, 78-1)B-M  
BUREAU AND PUTNAM COUNTIES  
STA. 69+29.50  
STR. No. 078-0001