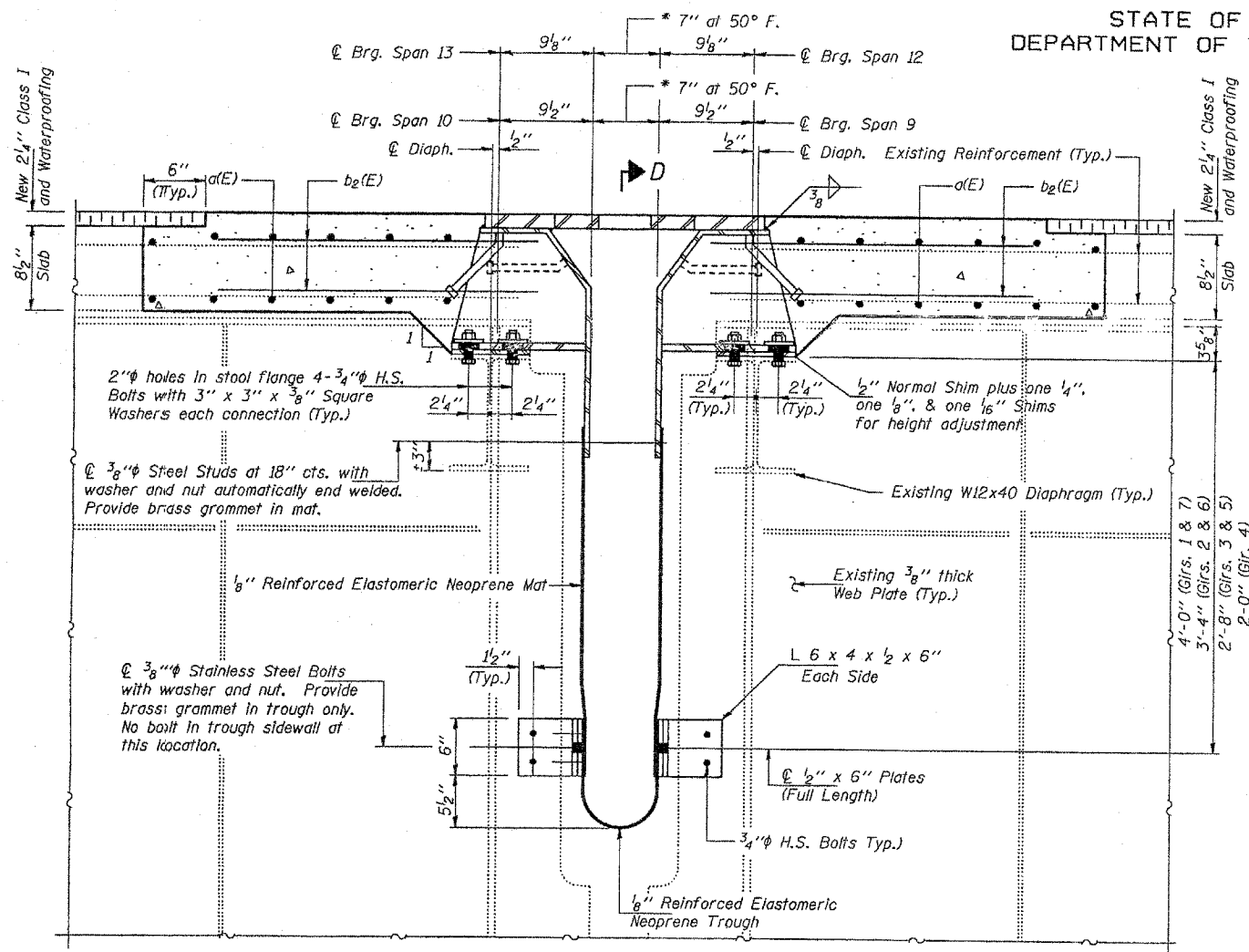


STATE OF ILLINOIS
DEPARTMENT OF TRANSPORTATION

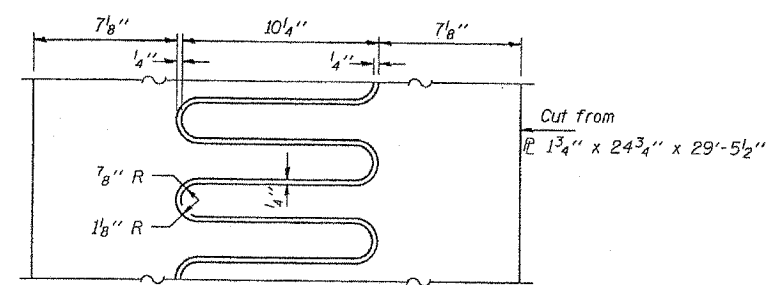
CONTRACT NO. 64945

F.A.I. RT.	SECTION	COUNTY	TOTAL SHEETS	SHEET NO.
-180	106-3, 78-1(BM-1)		15	14
STA. 69+29.5 TO STA. 69+30.5				
FED. ROAD DIST. NO. ILLINOIS FED. AID PROJECT				
** Bureau & Putnam Counties				

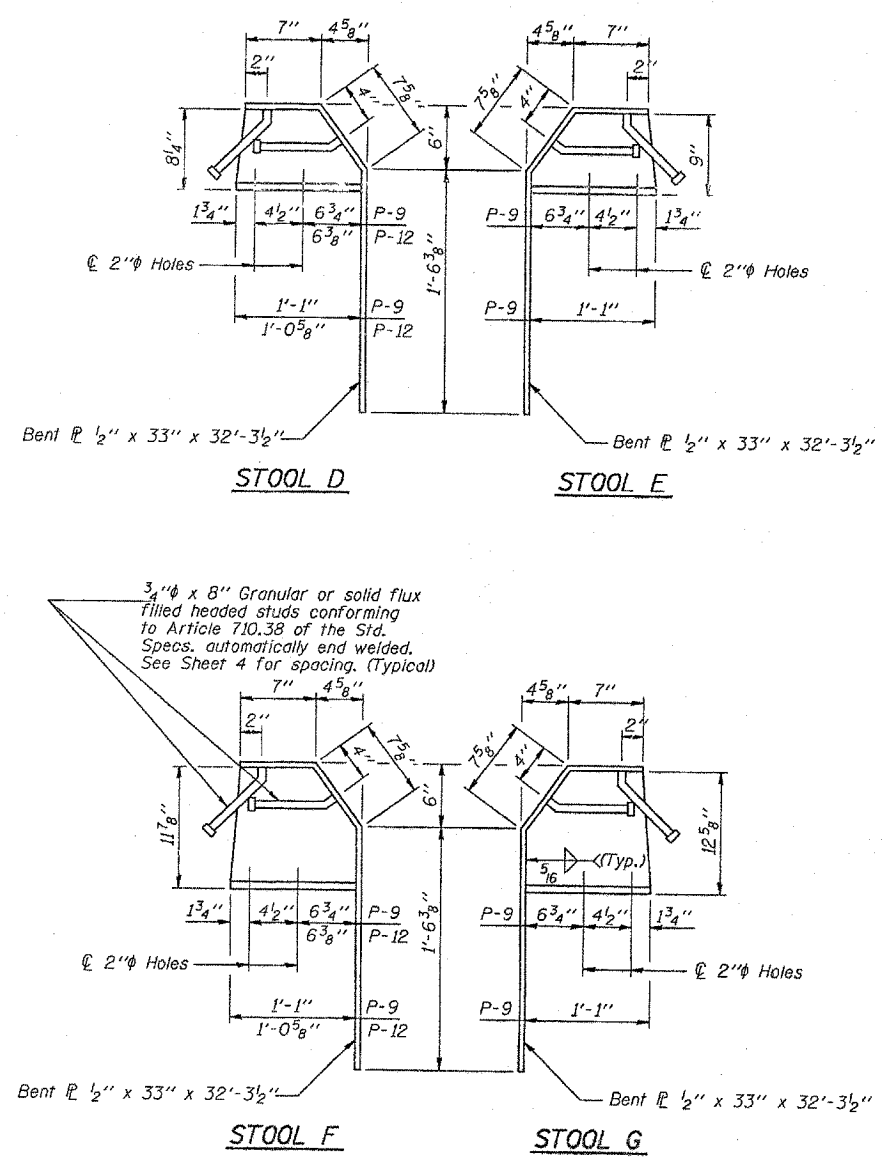


SECTION F-F

* Add 1/8" per each 100' of expansion for every 15° below the normal temperature of 50° F.
Subtract 1/8" per each 100' of expansion for every 15° above the normal temperature of 50° F.
(Total Expansion = 595' at Pier 9
Total Expansion = 440' at Pier 12)



FINGER PLATE DETAIL
(4 Thus Required)



FOR INFORMATION ONLY

Notes: All stools cut from W30x99 or equivalent plates.
For Stool locations see Sheet 7.
For Section D-D see Sheet 7.
All necessary stainless steel bolts, studs, washers, nuts, plates and angles for the neoprene trough shall be included with "Furnishing and Erecting Structural Steel".

FINGER PLATE DETAILS
AT PIERS 9 & 12
F.A.I. RT. 180 SEC. (06-3, 78-1)BM
BUREAU AND PUTNAM COUNTIES
STA. 69+29.50
STR. No. 078-0001

DESIGNED CHM	EXAMINED Paul E. Summer ENGINEER OF STRUCTURAL SERVICES
CHECKED Paul Summer	PASSED
DRAWN Paul Summer	APPROVED
CHECKED CHM	DIRECTOR OF HIGHWAYS

November 30 1992