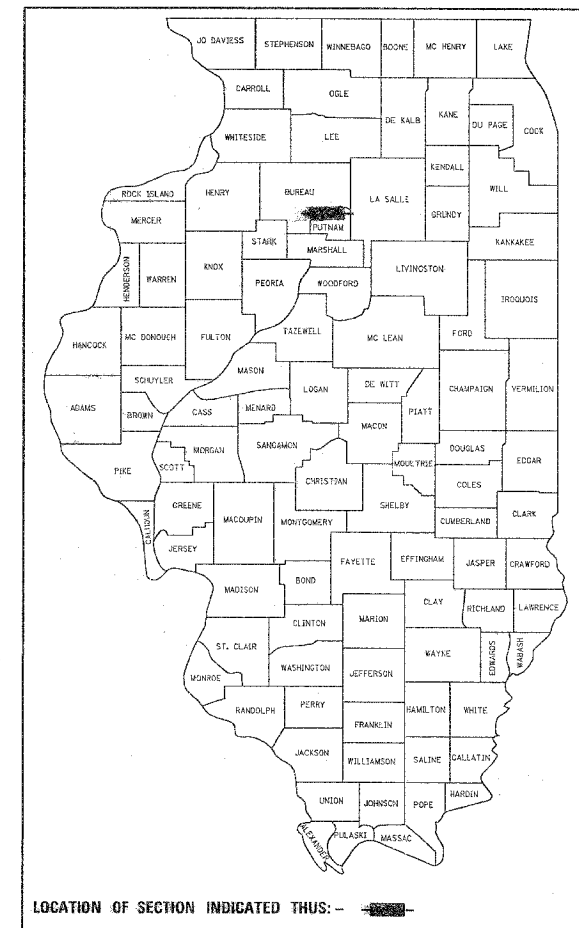


F.A.I. RTE.	SECTION	COUNTY	TOTAL SHEETS	SHEET NO.
180	06-3,78-1)BM-1	Putnam Counties	15	1

D-92-098-03



INDEX OF SHEETS

1. Cover Sheet, Index of Sheets, Standards
2. General Notes, Summary of Quantities

Traffic Control

3. -4. Stage I Plan
5. -6. Stage II Plan
7. Bridge Staging Cross Section

Bridge Plans

8. General Plan & Elevation
9. Deck Cross Sections & Joints at Piers 1, 2, 4, & 5
10. Deck Plan - Spans 1-5
11. Deck Plan - Spans 6-15
12. Finger Joint Trough Replacement
13. -15. Existing Finger Joint Plans

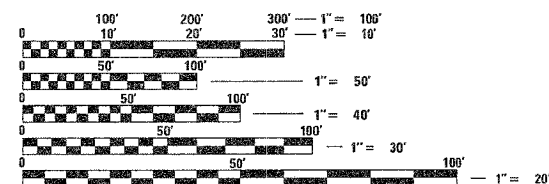
STATE OF ILLINOIS
DEPARTMENT OF TRANSPORTATION
DIVISION OF HIGHWAYS
PROPOSED
HIGHWAY PLANS

FAI ROUTE 180 (I-180)
SECTION (06-3,78-1)BM-1
PUTNAM COUNTY
PROJECT IM-180-7(027)000

C-92-134-03

STANDARDS

- 701400-02 Approach to Lane Closure, Freeway/Expressway
- 701406-04 Lane Closure, Freeway/Expressway, Day Operations Only
- 701431-03 Lane Closure, Multilane, Undivided with Crossover, for Speeds > 45 MPH to 55 MPH
- 702001-05 Traffic Control Devices
- 780001-01 TYPICAL APPLICATIONS RAISED REFLECTIVE PAVEMENT MARKERS

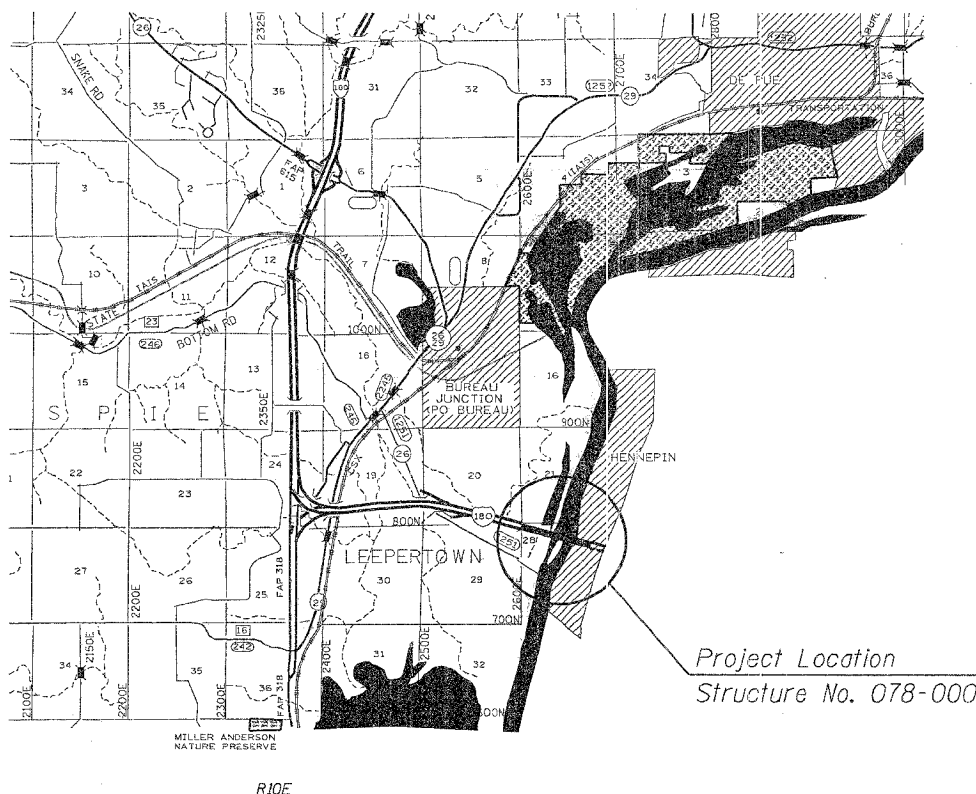


FULL SIZE PLANS HAVE BEEN PREPARED USING STANDARD ENGINEERING SCALES. REDUCED SIZED PLANS WILL NOT CONFORM TO STANDARD SCALES. IN MAKING MEASUREMENTS ON REDUCED PLANS, THE ABOVE SCALES MAY BE USED.

J.U.L.I.E.
 JOINT UTILITY LOCATION INFORMATION FOR EXCAVATION
 1-800-892-0123

CONTRACT NO. 64945

Bureau County
 Township: Leepertown
 Section: 28



Net Length of Section = Gross Length of Section = 0.58 Miles

STATE OF ILLINOIS
 DEPARTMENT OF TRANSPORTATION
 DIVISION OF HIGHWAYS

SUBMITTED December 19, 2005

Thomas L. Mountain
 DEPUTY DIRECTOR OF HIGHWAYS, REGION ENGINEER

February 3, 2006
Mike Nire
 ENGINEER OF DESIGN AND ENVIRONMENT

February 3, 2006
Milton R. Seo, P.E.
 DIRECTOR OF HIGHWAYS, CHIEF ENGINEER

PRINTED BY THE AUTHORITY
OF THE STATE OF ILLINOIS

F.A.I. SECTION COUNTY TOTAL SHEETS SHEET NO.	180 (06-3,78-1)BM-1		15	2
STA. TO STA.				
FED. ROAD DIST. NO. ILLINOIS FED. AID PROJECT				

General Notes

The following Mixture Requirements are applicable for this project:

Mixture Uses(s):	
PG:	PG 64-22
RAP%: (Max)	10%
Design Air Voids	4.0
Mixture Composition	IL 9.5 or IL 12.5
(Gradation Mixture)	
Friction Aggregate	D
20 Year ESAL	1.8

This structure will retain the same number 078-0001.

The Contractor shall be responsible for protecting utility property during construction operations as outlined in Article 107.31 of the Standard Specifications. A minimum of 48 hours advance notice is required for non-emergency work. The JULIE number is 800-892-0123.

TRAFFIC CONTROL AND PROTECTION STANDARD 701400 WILL NOT BE PAID FOR SEPARATELY.

Existing Barrier Wall in the median crossover areas is to be removed and restored to its original condition upon completion of Stage II deck overlay. Existing barrier wall sections may be re-used with approval of the Resident Engineer except that the contractor shall replace any damaged sections.

Summary of Quantities

90% FED
10% STATE
SFTY-2A

Code Number	Pay Item	Unit	Quantity
44000910	BITUMINOUS CONCRETE REMOVAL (DECK)	SQ YD	19935
50500405	FURNISHING AND ERECTING STRUCTURAL STEEL	POUND	5700
67100100	MOBILIZATION	L SUM	1
67000400	ENGINEER'S FIELD OFFICE, TYPE A	CAL MO	6
70100400	TRAFFIC CONTROL AND PROTECTION, STANDARD 701431	EACH	2
70100800	TRAFFIC CONTROL AND PROTECTION, STANDARD 701401	L SUM	1
70300220	TEMPORARY PAVEMENT MARKING - LINE 4"	FOOT	12332
70300500	PAVEMENT MARKING TAPE, TYPE III	FOOT	26182
70301000	WORK ZONE PAVEMENT MARKING REMOVAL	SQ FT	12750
78000200	THERMOPLASTIC PAVEMENT MARKING - LINE 4"	FOOT	18732
78300100	PAVEMENT MARKING REMOVAL	SQ FT	550
X0321743	SILICONE JOINT SEALER 1"	FOOT	260
X0322121	SHEET WATERPROOFING MEMBRANE SYSTEM	SQ YD	19935
X0323357	CONCRETE BARRIER REMOVAL AND REPLACEMENT	FOOT	930
X4066526	POLYMERIZED BITUMINOUS CONCRETE SURFACE COURSE, SUPERPAVE, MIX 'D', N70	TON	2671
Z0016001	DECK SLAB REPAIR (FULL DEPTH, TYPE I)	SQ YD	100
Z0016002	DECK SLAB REPAIR (FULL DEPTH, TYPE II)	SQ YD	100
Z0016200	DECK SLAB REPAIR (PARTIAL)	SQ YD	300
Z0022400	FABRIC REINFORCED ELASTOMERIC TROUGH	FOOT	276
Z0024476	FLEXIBLE DELINEATOR MAINTENANCE	EACH	100
△ Z0030250	IMPACT ATTENUATORS, TEMPORARY (NON- REDIRECTIVE), TEST LEVEL 3	EACH	4

△ SFTY-3N

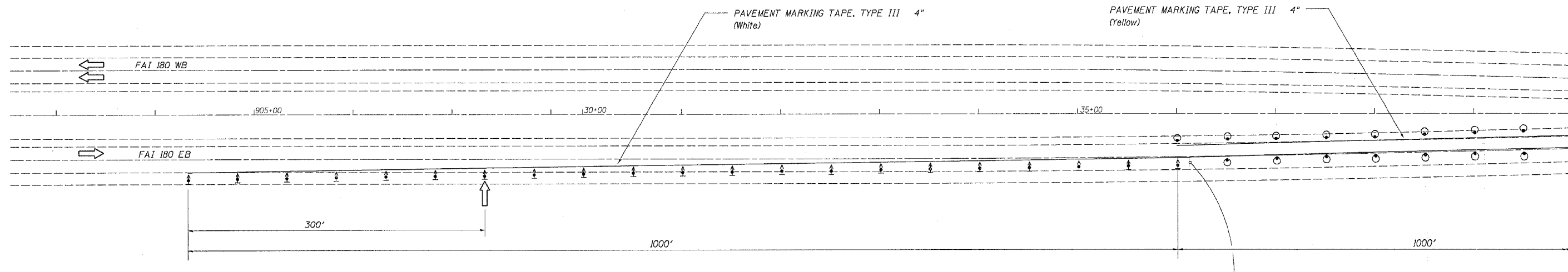
General Notes & Summary of Quantities
FAI 180 (I-180)
Section (06-3,78-1)BM-1
Putnam County
Structure No. 078-0001

F.A.I. RTE.	SECTION	COUNTY	TOTAL SHEETS	SHEET NO.
180	106-3.28-118M-1		15	3
STA.	TO STA.			
FED. ROAD DIST. NO.		ILLINOIS	FED. AID PROJECT	
Putnam Counties				

Traffic Control Plan

Stage I

Refer to Traffic Control & Protection Standard 701431-03 for additional details and signing requirements

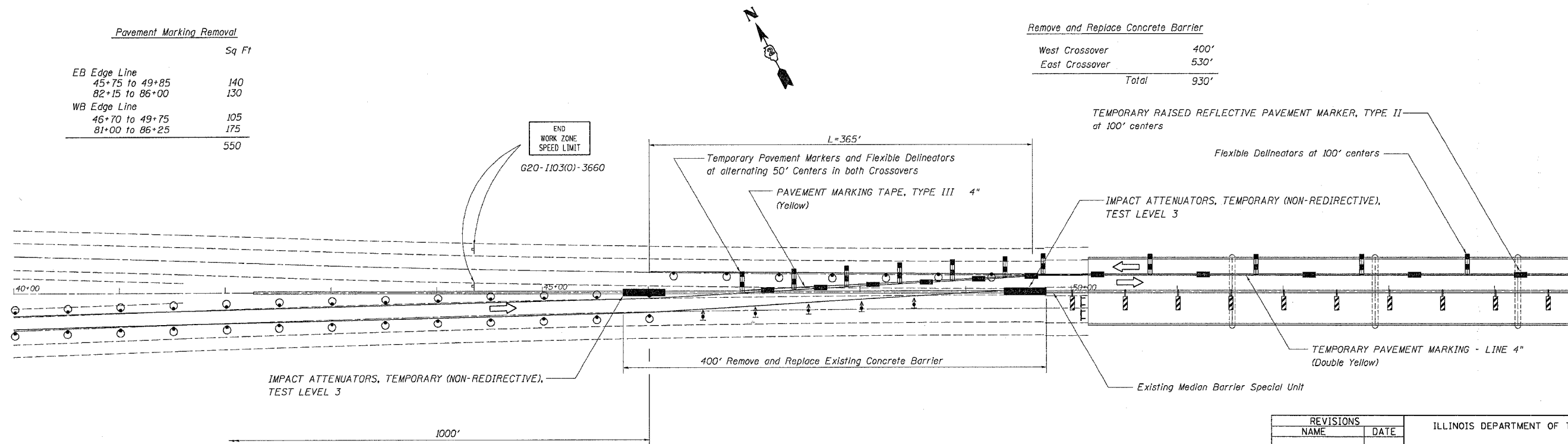


Pavement Marking Removal

	Sq Ft
EB Edge Line	
45+75 to 49+85	140
82+15 to 86+00	130
WB Edge Line	
46+70 to 49+75	105
81+00 to 86+25	175
Total	550

Remove and Replace Concrete Barrier

West Crossover	400'
East Crossover	530'
Total	930'



PLOT DATE = Mon, Dec 18, 13:23:31, 2005
 FILE NAME = D:\BVT\plan\078000\078000A\078000.dgn
 PLOT SCALE = 50:0000 / IN.
 REFERENCE = REF#

REVISIONS	
NAME	DATE

ILLINOIS DEPARTMENT OF TRANSPORTATION

SCALE: VERT.
HORIZ.
DATE

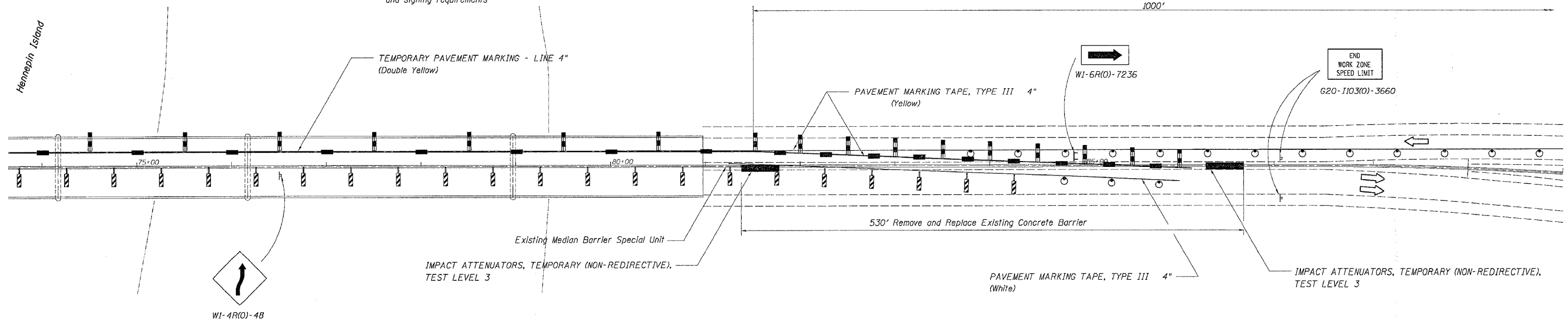
DRAWN BY
CHECKED BY

F.A.I. RTE.	SECTION	COUNTY	TOTAL SHEETS	SHEET NO.
180	06-3,78-118M-1		15	4
STA.	TO STA.			
FED. ROAD DIST. NO.	ILLINOIS	FED. AID PROJECT		
		Putnam Counties		

Traffic Control Plan

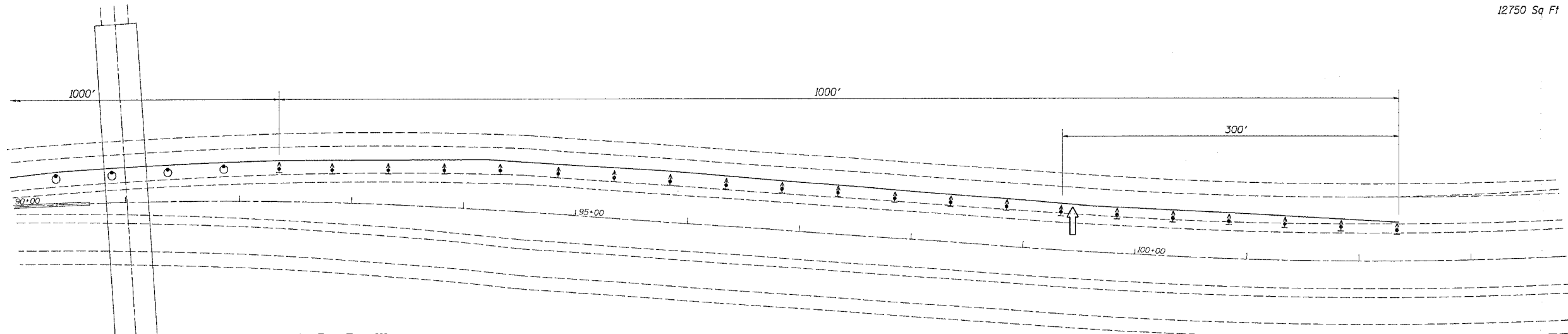
Stage I

Refer to Traffic Control & Protection Standard 701431-03 for additional details and signing requirements



WORKZONE PAVEMENT MARKING REMOVAL

Stage I	6250 Sq Ft
Stage II	6500 Sq Ft
Total	12750 Sq Ft



Pavement Marking Tape Type III

Stage I White		Yellow	
West Taper	1000'	West Tangent	1000'
West Tangent	1000'	West X-Over	365'
West X-Over	365'	East X-Over	475'
East X-Over	475'	East Tangent	1000'
	2860'	East Taper	1000'
			3840'

TEMPORARY PAVEMENT MARKING - LINE 4" (Double Yellow)

Structure Stage I Traffic 6166'

TEMPORARY PAVEMENT MARKING - LINE 4" (White)

Structure Stage I Traffic 6166'

REVISIONS	
NAME	DATE

ILLINOIS DEPARTMENT OF TRANSPORTATION

SCALE: VERT. HORIZ. DATE DRAWN BY CHECKED BY

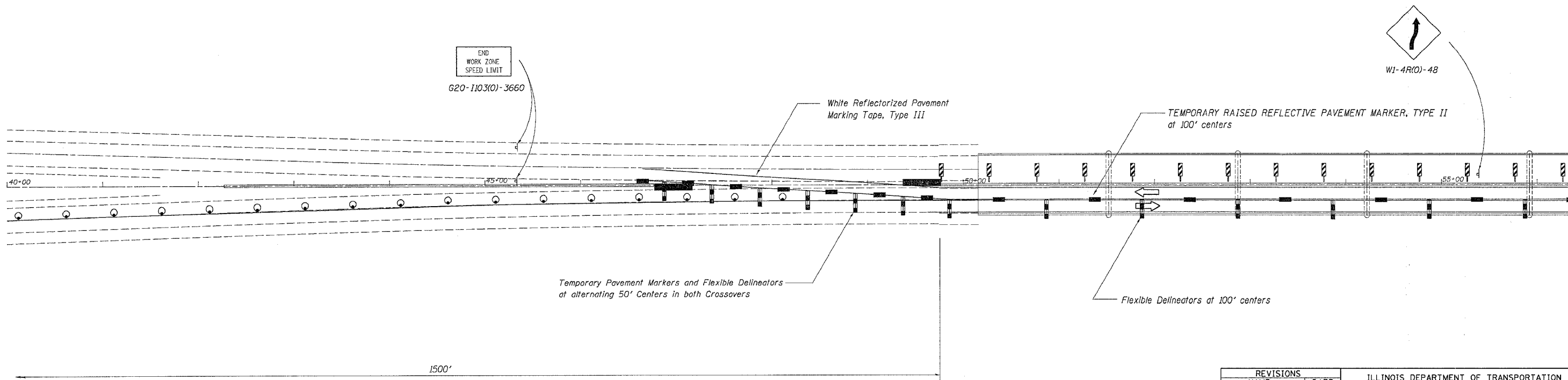
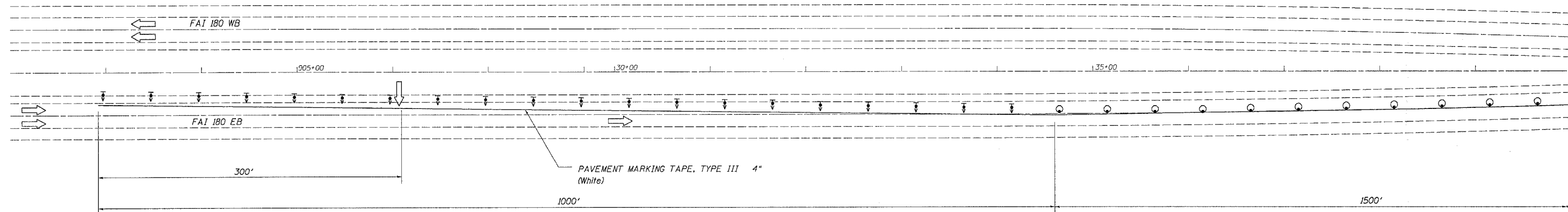
PLOT DATE = Mon, Dec 15, 12:52:47, 2008
 PLOT NAME = C:\Users\jgibson\Documents\10760001.dgn
 PLOT SCALE = 5/8"=1'-0"
 REFERENCE = *REF*

F.A.I. RTE.	SECTION	COUNTY	TOTAL SHEETS	SHEET NO.
180	106-3.78-118M-1		15	5
STA.	TO STA.			
FED. ROAD DIST. NO.	ILLINOIS	FED. AID PROJECT		
Putnam Counties				

Traffic Control Plan

Stage II

Refer to Traffic Control & Protection Standard 701431-03 for additional details and signing requirements



REVISIONS	
NAME	DATE

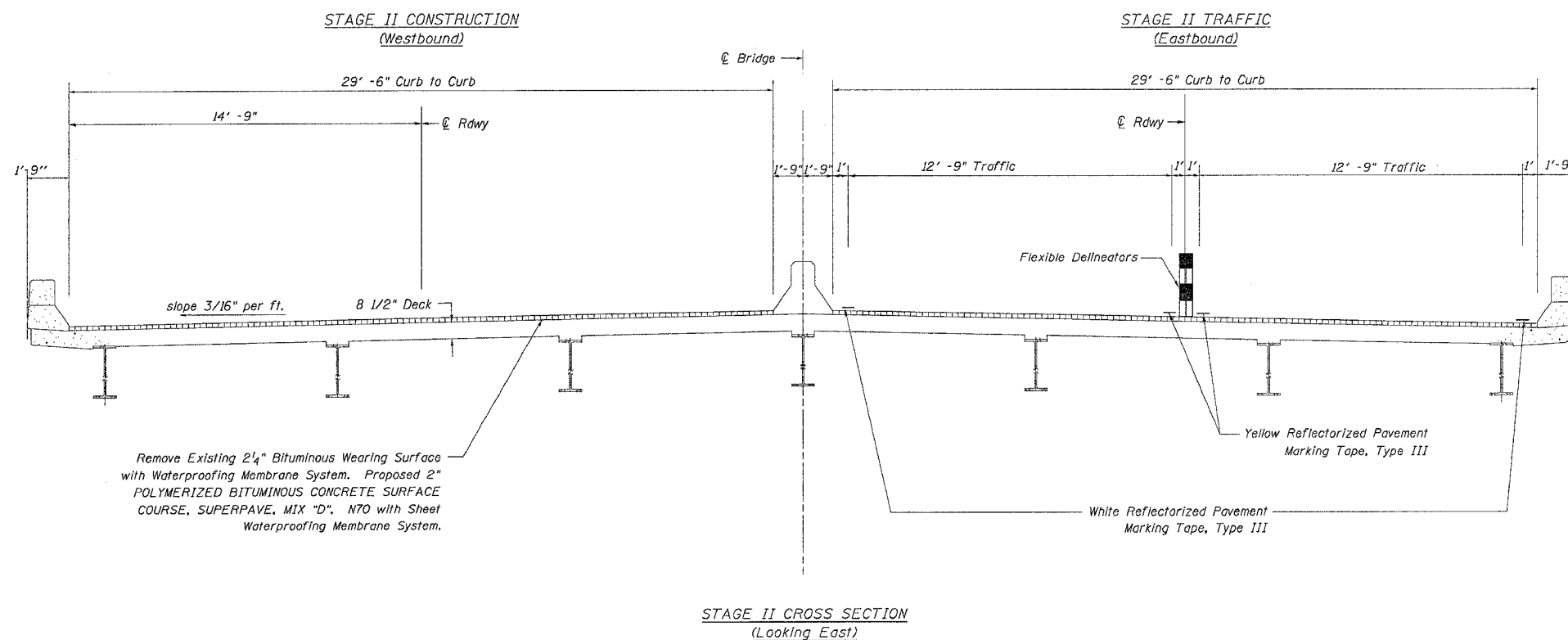
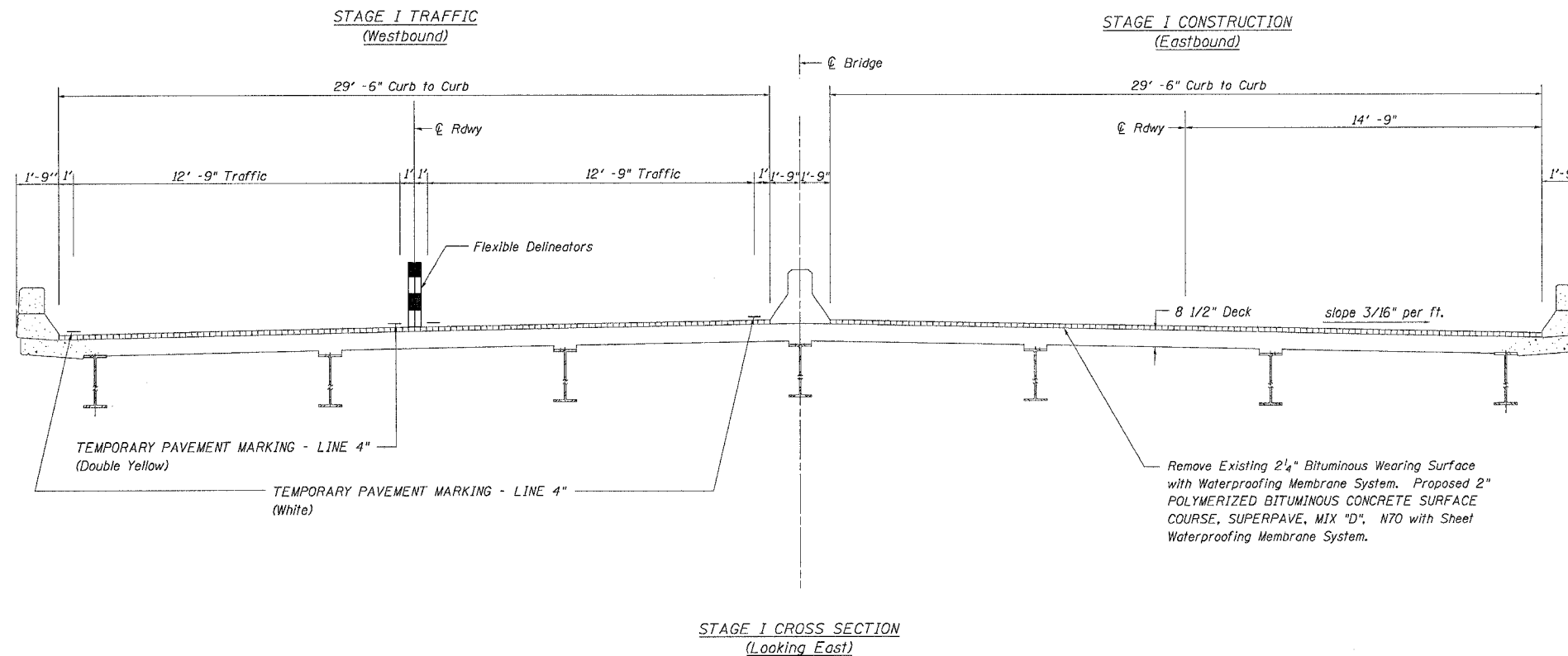
ILLINOIS DEPARTMENT OF TRANSPORTATION

SCALE: VERT. / HORIZ. / DATE

DRAWN BY / CHECKED BY

PLOT DATE = Nov Dec 19 13:13:08 2005
 FILE NAME = D:\SRV\plan\0766088\0766088\0766088.dgn
 PLOT SCALE = 50.0000 / IN.
 USER NAME = ltriedj

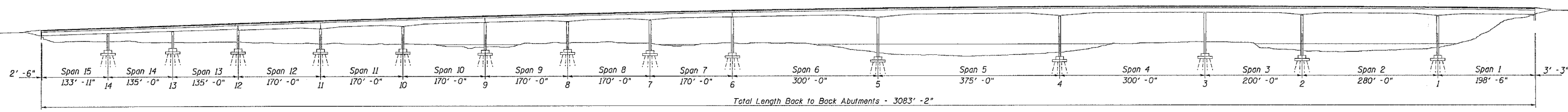
F.A.I. RTE.	SECTION	COUNTY	TOTAL SHEETS	SHEET NO.
180	06-3,78-1)BM-1		15	1
STA. _____		TO STA. _____		
FED. ROAD DIST. NO. _____		ILLINOIS FED. AID PROJECT		
Putnam Counties				



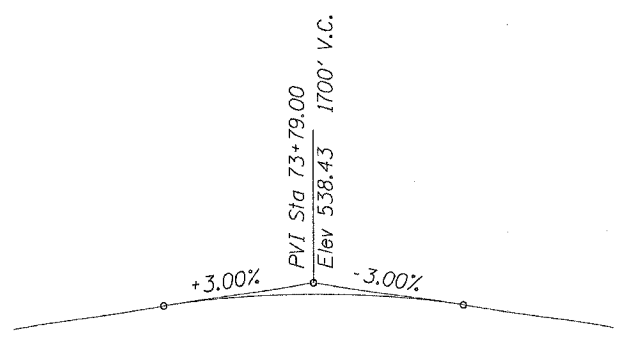
PLOT DATE = Nov Dec 19 13:33:32 2005
 FILE NAME = D:\V\B\plans\0780001\0780001.dgn
 PLOT SCALE = 50.00000 / IN.
 REFERENCE = REF#

Staging Cross Sections
 FAI 180 (I-180)
 Section (06-3,78-1)BM-1
 Bureau & Putnam Counties
 Structure No. 078-0001

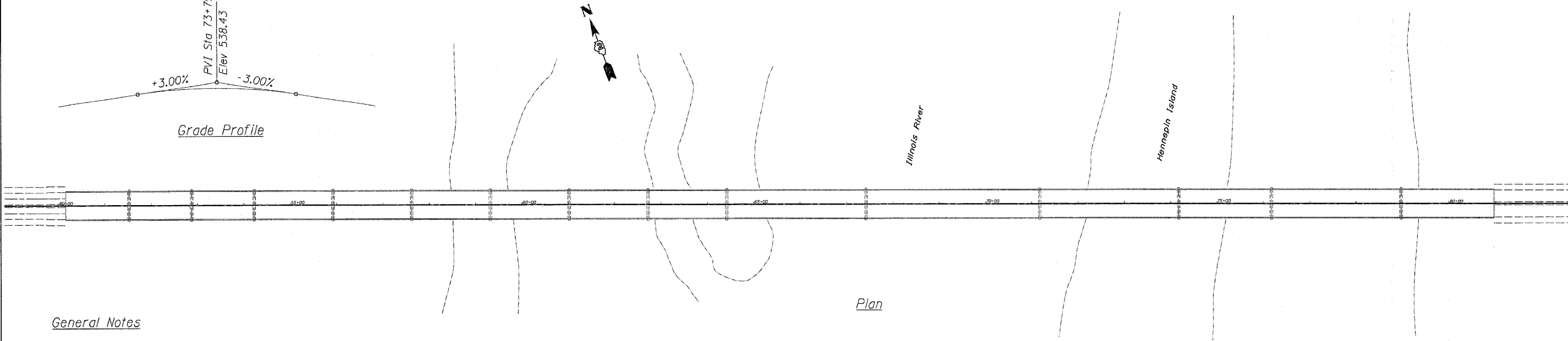
F.A.I. RTE.	SECTION	COUNTY	TOTAL SHEETS	SHEET NO.
180	06-3.78-1(BM-1)	ILLINOIS	15	8
STA. _____		TO STA. _____		
FED. ROAD DIST. NO. _____		ILLINOIS FED. AID PROJECT		
•• Putnam Counties				



Elevation



Grade Profile



Plan

General Notes

Field welding of construction accessories will not be permitted to beams or girders.

Reinforcement bars shall conform to the requirements of AASHTO M31 or M322 Grade 60.

Plan dimensions and details relative to existing structure have been taken from existing plans and are subject to nominal construction variations. It shall be the Contractor's responsibility to verify such dimensions and details in the field and make necessary approved adjustments prior to construction or ordering of materials. Such variations shall not be cause for additional compensation for a change in the scope of the work, however, the Contractor will be paid for the quantity actually furnished at the unit price for the work.

The existing structural steel coating contains lead. The Contractor shall take appropriate precautions to deal with the presence of lead on this project.

All structural steel shall conform to AASHTO Classification M-270 Gr. 50, unless otherwise noted.

All structural steel shall be shop painted with the inorganic zinc rich primer per AASHTO M300, Type 1. Cost included with Furnishing and Erecting Structural Steel

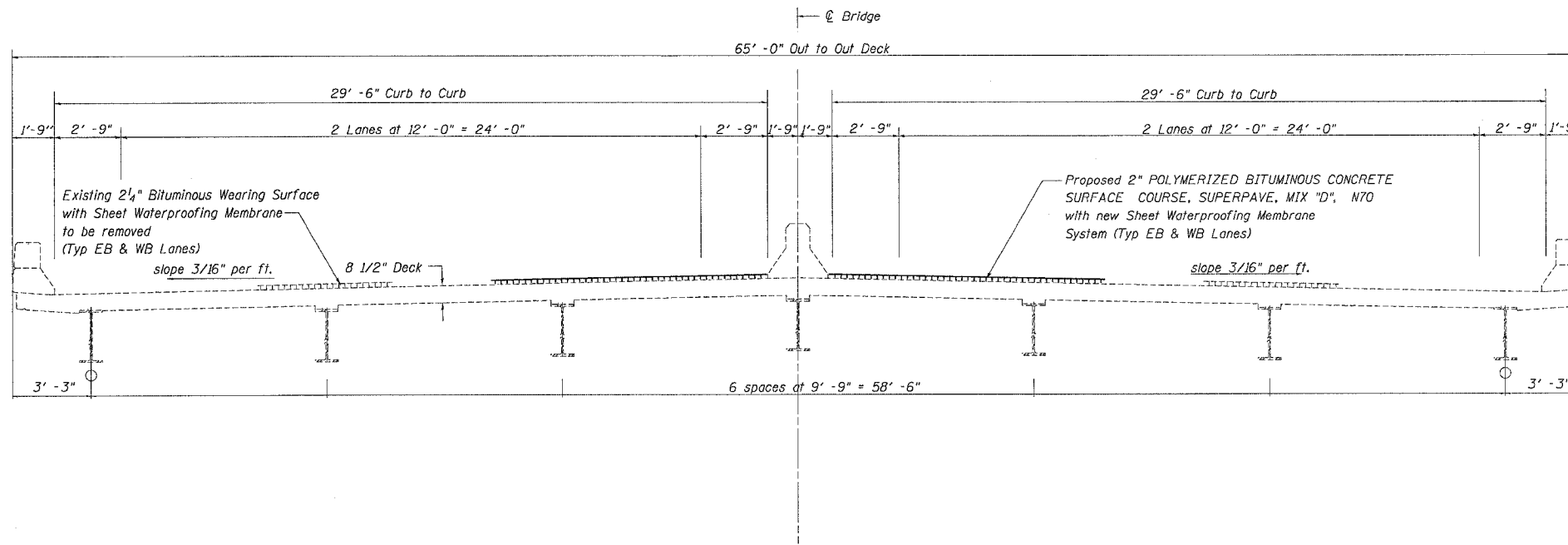
Total Bill of Material

Item	Unit	Quantity
Bituminous Concrete Removal (Deck)	Sq. Yd.	19935
Sheet Waterproofing Membrane System	Sq. Yd.	19935
POLYMERIZED BITUMINOUS CONCRETE SURFACE COURSE, SUPERPAVE, MIX "D", N70	Ton	2671
Deck Slab Repair (Partial)	Sq. Yd.	300
Deck Slab Repair (Full Depth - Type I)	Sq. Yd.	100
Deck Slab Repair (Full Depth - Type II)	Sq. Yd.	100
Fabric Reinforced Elastomeric Trough	Lin. Ft.	276
Silicone Joint Sealer, 1"	Lin. Ft.	260
Furnishing and Erecting Structural Steel	Pound	5700

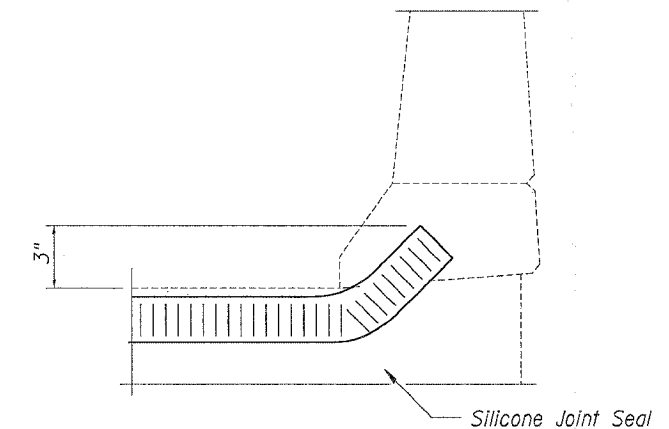
General Plan & Elevation
 FAI 180 (I-180)
 Section (06-3.78-1)BM-1
 Bureau & Putnam Counties
 Structure No. 078-0001

PLOT DATE = Mon, Dec 19, 13:32:46, 2005
 FILE NAME = D:\SRV\plans\0780001\0780001.dgn
 PLOT SCALE = 50.00000 / IN.
 REFERENCE = #REF#

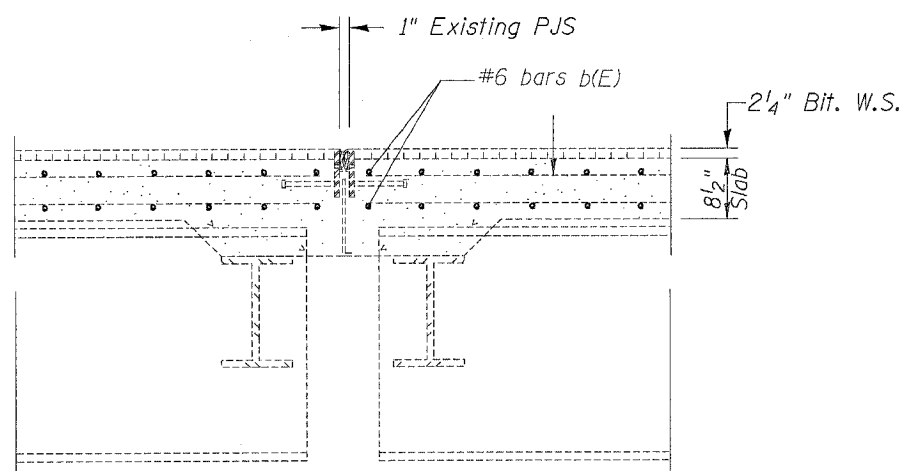
F.A.I. RTE.	SECTION	COUNTY	TOTAL SHEETS	SHEET NO.
180	06-3,78-1BM-1		15	9
STA. _____		TO STA. _____		
FED. ROAD DIST. NO. _____		ILLINOIS FED. AID PROJECT		
•• Putnam Counties				



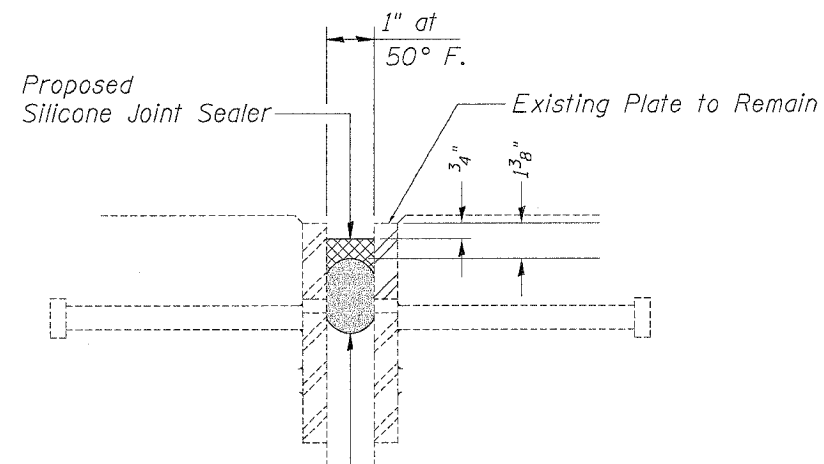
CROSS SECTION



TYPICAL END OF SEAL TREATMENT AT EXPANSION JOINT



EXISTING SECTION A-A AT PIERS 1,2,4 & 5



Backer rod having a diameter 25% greater than joint opening at the time of installation.

PROPOSED SECTION A-A AT PIERS 1,2,4 & 5 SILICONE JOINT SEALER DETAIL

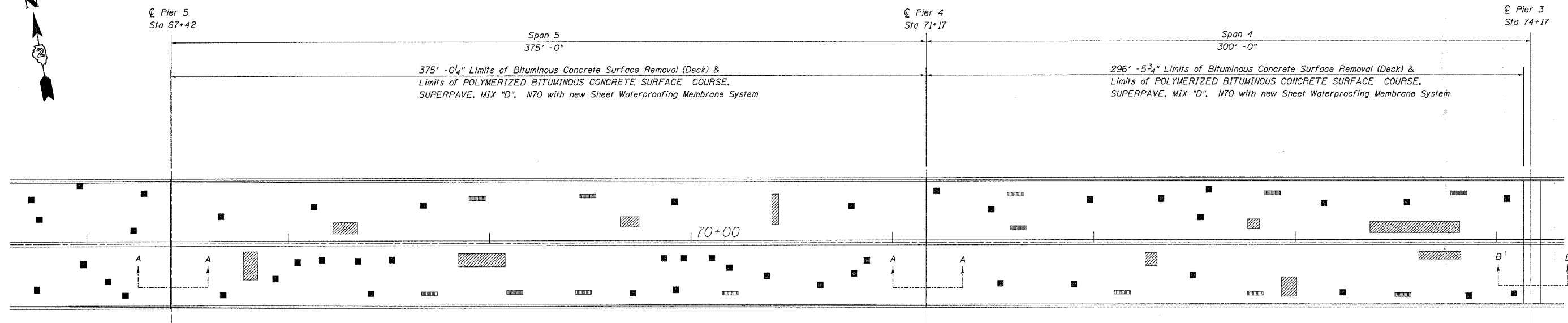
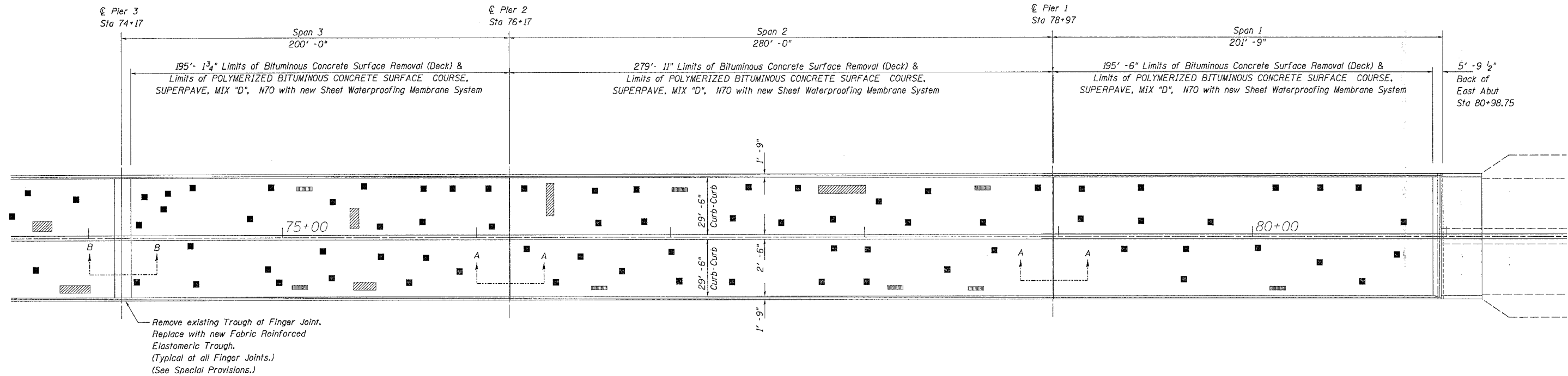
Bill of Material (Joints at Piers 1,2,4 & 5)

Item	Unit	Quantity
Silicone Joint Sealer, 1"	Lin. Ft.	65

Quantity is per Joint

Deck Cross Section & Joints at Piers 1, 2, 4 & 5
FAI 180 (I-180)
Section (06-3,78-1)BM-1
Bureau & Putnam Counties
Structure No. 078-0001

F.A.I. RTE.	SECTION	COUNTY	TOTAL SHEETS	SHEET NO.
180	(06-3,78-1)BM-1		15	10
STA. _____ TO STA. _____		FED. ROAD DIST. NO. _____ ILLINOIS FED. AID PROJECT		
Putnam Counties				



- Legend
- Deck Slab Repair (Partial)
 - ▨ Deck Slab Repair (Full Depth - Type I)
 - ▩ Deck Slab Repair (Full Depth - Type II)

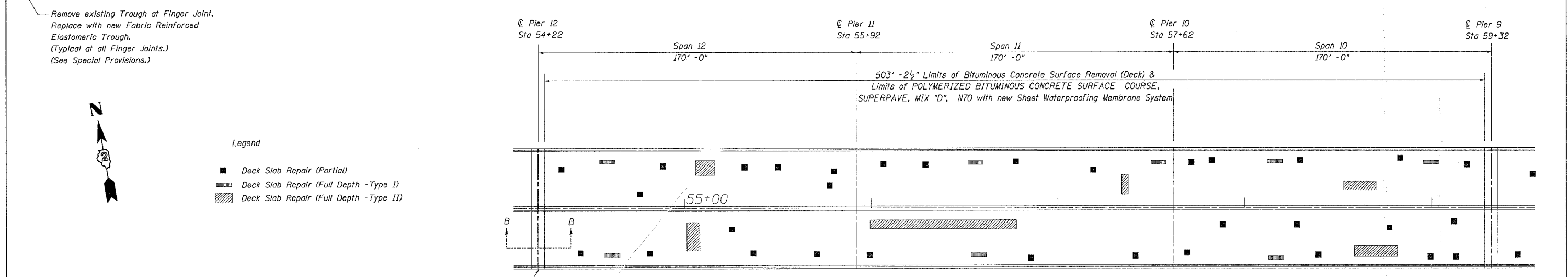
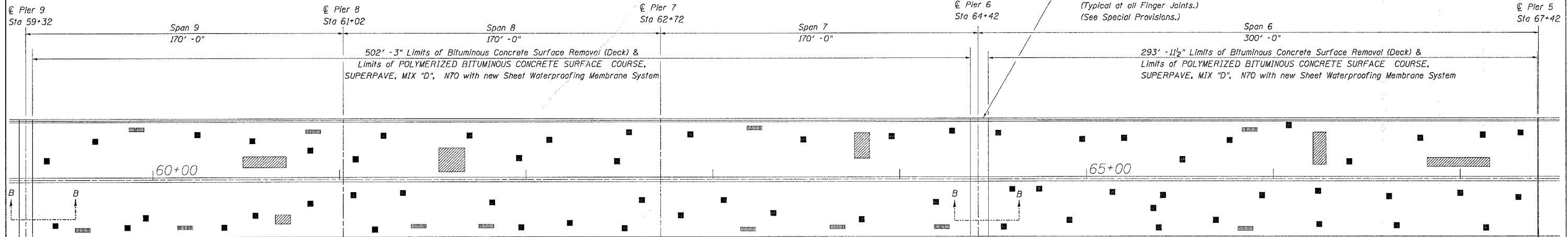
For Section A-A,
See Sheet ___9___

For Section B-B
See Sheet ___12___

Deck Plan - Spans 1-5
FAI 180 (I-180)
Section (06-3,78-1)BM-1
Bureau & Putnam Counties
Structure No. 078-0001

PLOT DATE = Mon, Dec 19, 12:34:59, 2005
 FILE NAME = D:\SRV\plan\0780001\0780001.dgn
 PLOT SCALE = 50.00000 / IN.
 REFERENCE = #REF#

F.A.I. RTE.	SECTION	COUNTY	TOTAL SHEETS	SHEET NO.
180	06-3.78-1BM-1	Putnam	15	11
STA.	TO STA.			
	ILLINOIS		FED. AID PROJECT	
Putnam Counties				

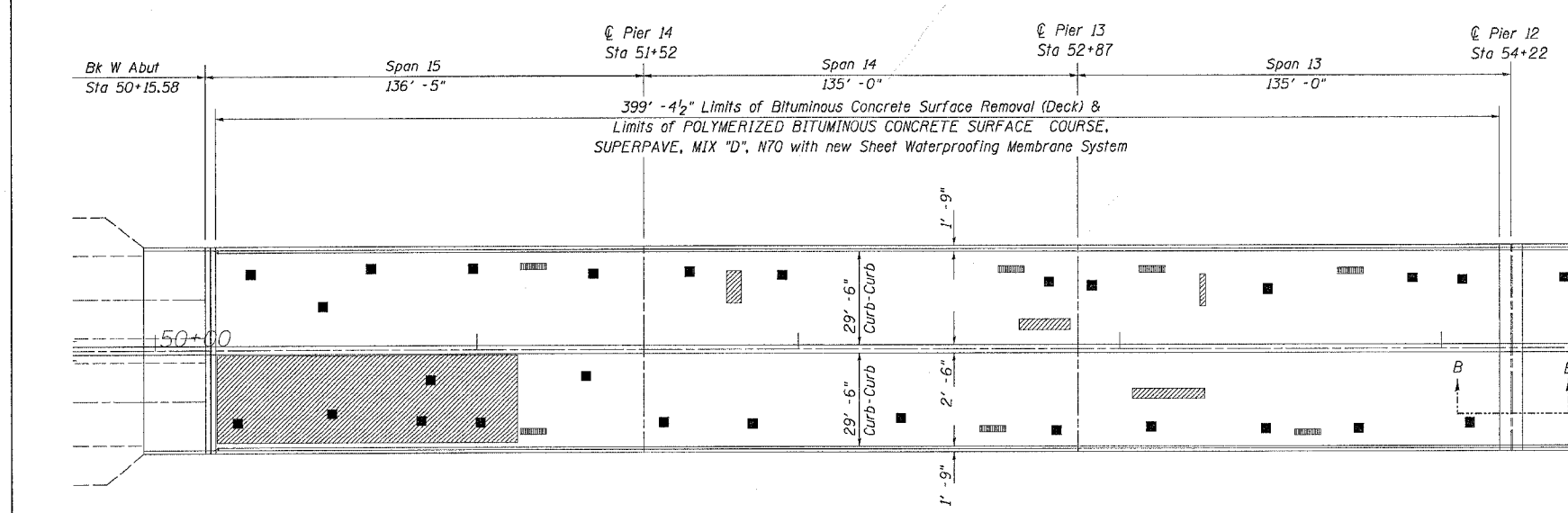


- Legend
- Deck Slab Repair (Partial)
 - ▨ Deck Slab Repair (Full Depth - Type I)
 - ▩ Deck Slab Repair (Full Depth - Type II)



For Section B-B See Sheet 12

Remove existing Trough at Finger Joint. Replace with new Fabric Reinforced Elastomeric Trough. (Typical at all Finger Joints.) (See Special Provisions.)



Bill of Material

Item	Unit	Quantity
Bituminous Concrete Surface Removal (Deck)	Sq. Yd.	19935
Sheet Waterproofing Membrane System	Sq. Yd.	19935
POLYMERIZED BITUMINOUS CONCRETE SURFACE COURSE, SUPERPAVE, MIX "D", N70	Ton	2671
Deck Slab Repair (Partial)	Sq. Yd.	300
Deck Slab Repair (Full Depth - Type I)	Sq. Yd.	100
Deck Slab Repair (Full Depth - Type II)	Sq. Yd.	100

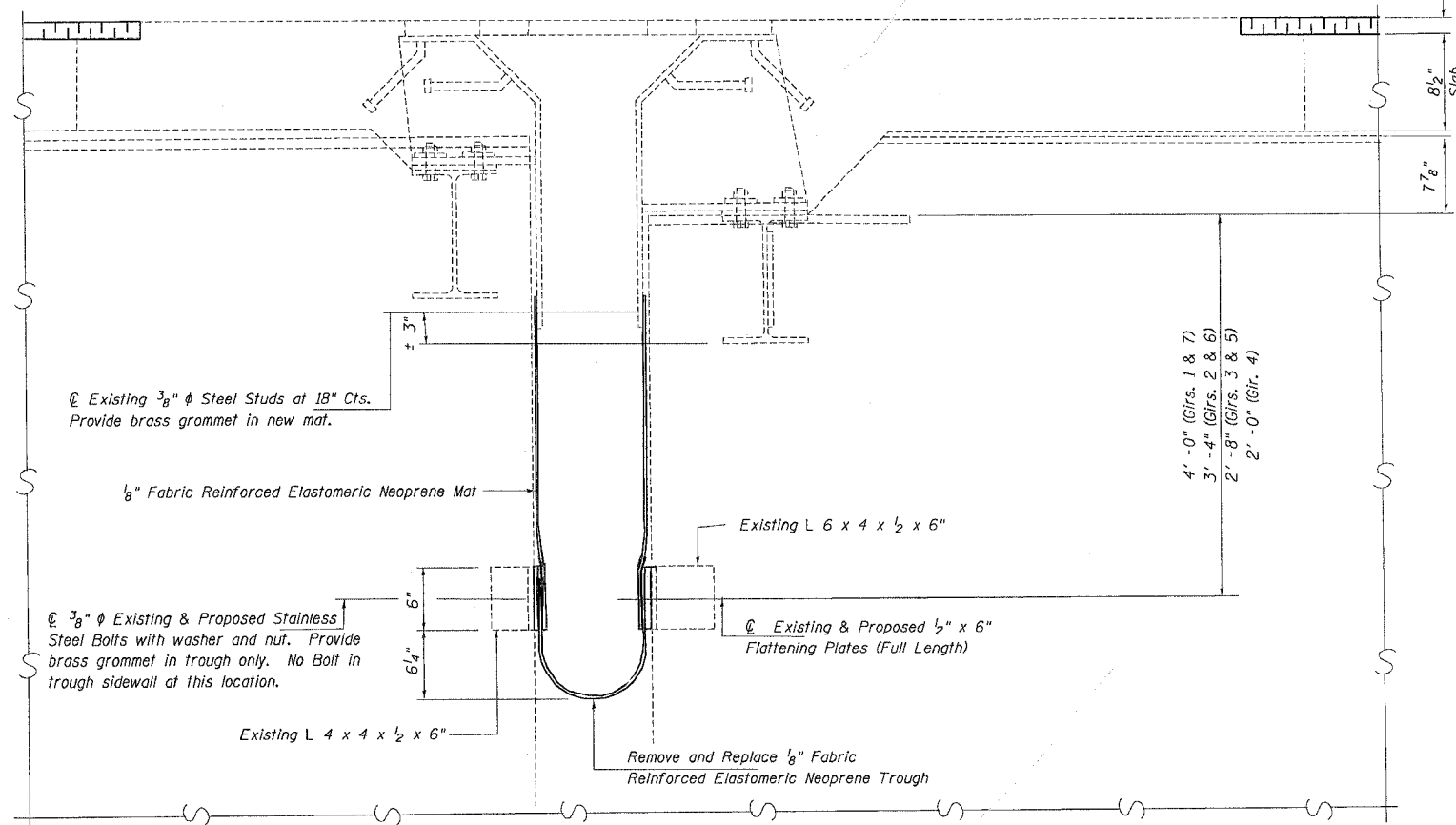
Date of Deck Survey: 4/22/2005

Note: The plan quantities for Deck Slab Repair (Partial and Full Depth) are estimated quantities. The areas shown on the deck repair plans are potential areas of Deck Slab Repair. The Deck Slab Repair quantities in the Bill of Materials are included as contingencies to be used as directed by the engineer during construction. The actual locations and quantity of Deck Slab Repair on all structures shall be determined by the Resident Engineer in the field after removal of the existing wearing surface. Actual repair locations shall be shown on the same as-built plans.

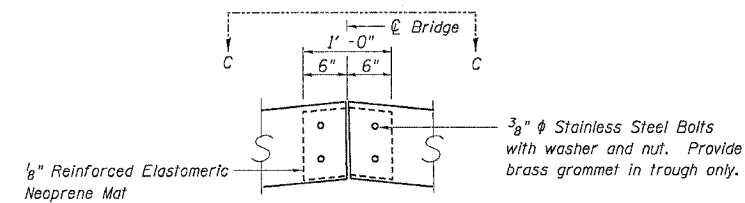
Deck Plan - Spans 6-15
 FAI 180 (I-180)
 Section (06-3.78-1)BM-1
 Bureau & Putnam Counties
 Structure No. 078-0001

F.A.I. RTE.	SECTION	COUNTY	TOTAL SHEETS	SHEET NO.
180	06-3.78-1BM-1		15	12
STA. _____ TO STA. _____		FED. ROAD DIST. NO. _____ ILLINOIS FED. AID PROJECT		
Putnam Counties				

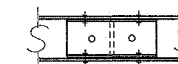
New 2" POLYMERIZED BITUMINOUS CONCRETE SURFACE COURSE, SUPERPAVE, MIX "D", N70 and new Sheet Waterproofing Membrane System



SECTION B-B
AT PIERS 3,6,9 & 12



TROUGH SPLICE DETAIL

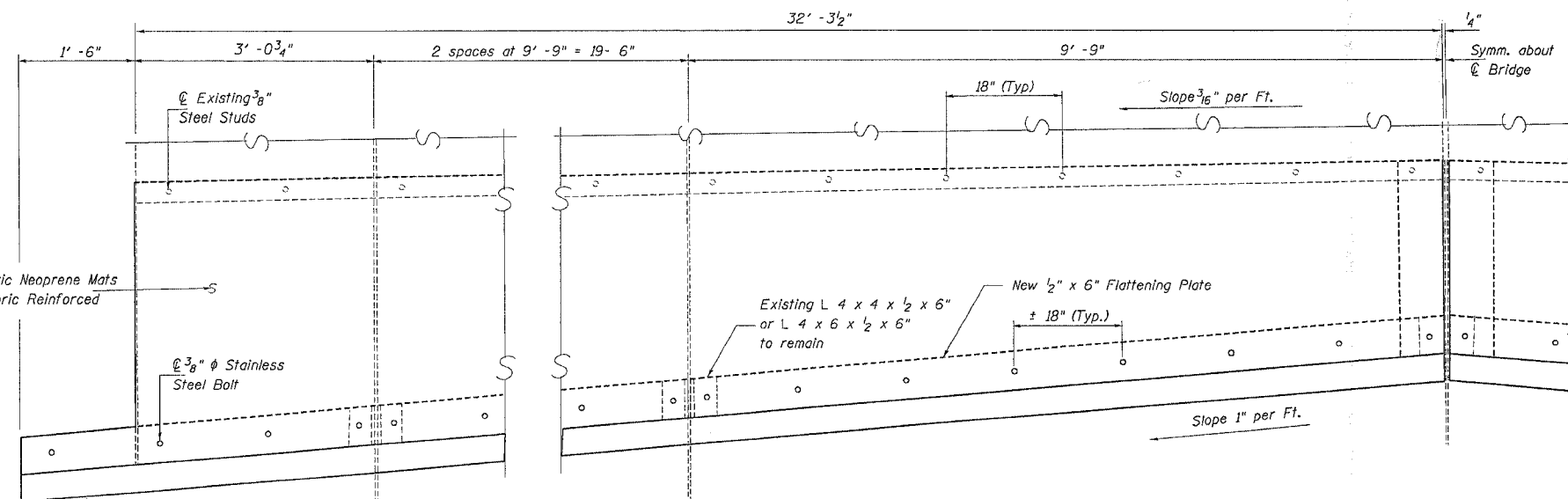


VIEW C-C

Bill of Material

Item	Unit	Quantity
Fabric Reinforced Elastomeric Trough	Lin. Ft.	276

Remove existing Elastomeric Neoprene Mats and Replace with new Fabric Reinforced Elastomeric Trough Flaps

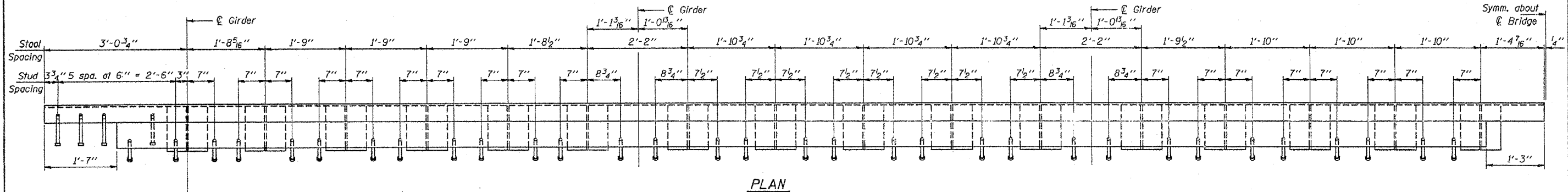


Remove existing Elastomeric Trough and Plates and Replace with new Fabric Reinforced Elastomeric Trough and Flattening Plates

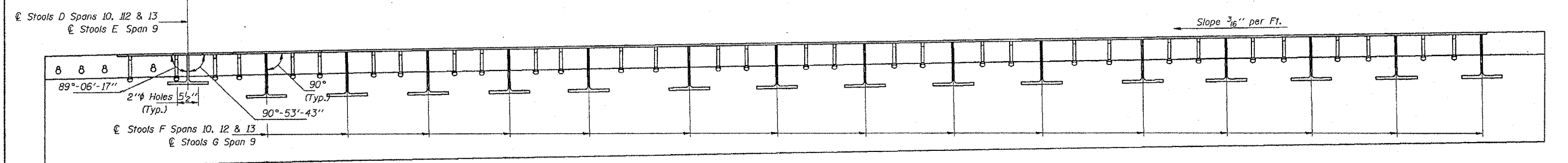
Finger Joint Trough Details
FAI 180 (I-180)
Section (06-3.78-1)BM-1
Bureau & Putnam Counties
Structure No. 078-0001

STATE OF ILLINOIS
DEPARTMENT OF TRANSPORTATION

CONTRACT NO. 64945				
F.A.I. RT.	SECTION	COUNTY	TOTAL SHEETS	SHEET NO.
180	106-3, 78-18M-1		15	13
STA.	TO STA.		FED. AID PROJECT	
			Putnam Counties	

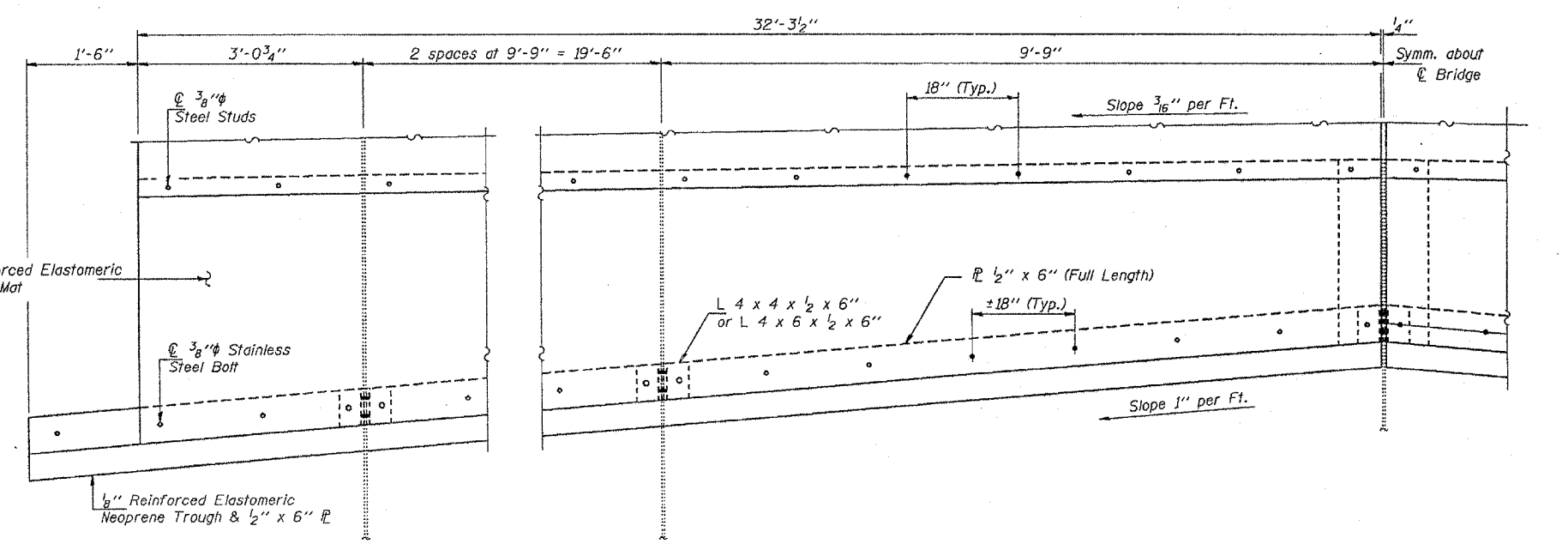


PLAN



ELEVATION

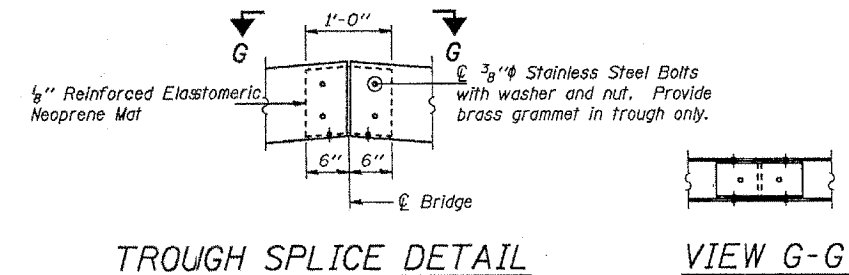
SPANS 9, 10, 12 & 13



SECTION D-D

FINGER PLATE DETAILS
F.A.I. RT. 180 SEC. (06-3, 78-1)BM
BUREAU AND PUTNAM COUNTIES
STA. 69+29.50
STR. No. 078-0001

FOR INFORMATION ONLY



TROUGH SPLICE DETAIL

VIEW G-G

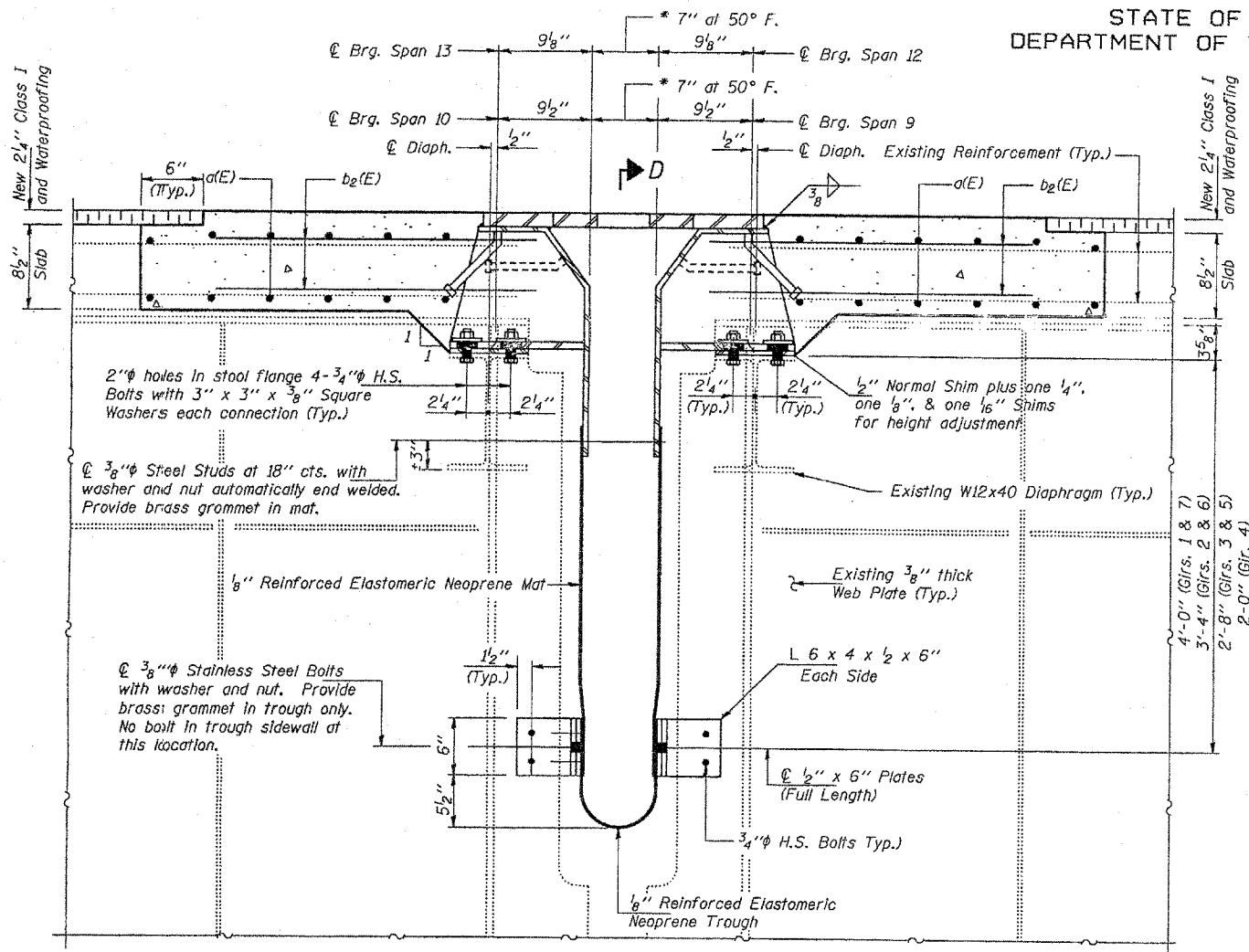
DESIGNED <i>CHM</i>	EXAMINED <i>Paul E. Summer</i>
CHECKED <i>Paul Summer</i>	PASSED
DRAWN <i>Paul Summer</i>	APPROVED
CHECKED <i>CHM</i>	DIRECTOR OF HIGHWAYS

November 30 1992

STATE OF ILLINOIS
DEPARTMENT OF TRANSPORTATION

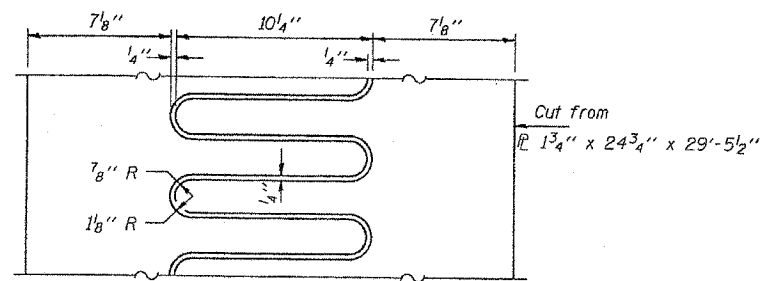
CONTRACT NO. 64945

F.A.I. RT.	SECTION	COUNTY	TOTAL SHEETS	SHEET NO.
-180	106-3, 78-1(BM-1)		15	14
STA. 69+29.5 TO STA. 69+29.5				
FED. ROAD DIST. NO. ILLINOIS FED. AID PROJECT				
** Bureau & Putnam Counties				



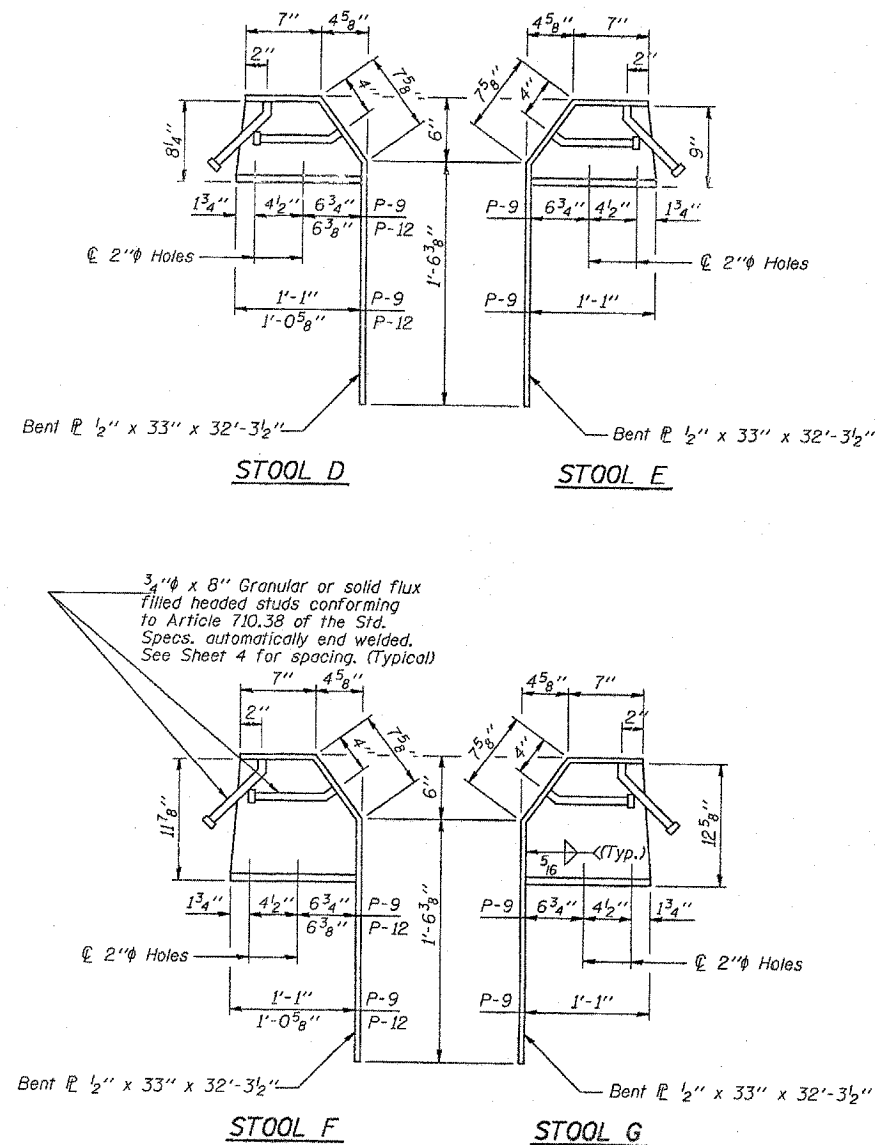
SECTION F-F

* Add 1/8" per each 100' of expansion for every 15° below the normal temperature of 50° F.
Subtract 1/8" per each 100' of expansion for every 15° above the normal temperature of 50° F.
(Total Expansion = 595' at Pier 9
Total Expansion = 440' at Pier 12)



FINGER PLATE DETAIL

(4 Thus Required)



FOR INFORMATION ONLY

Notes: All stools cut from W30x99 or equivalent plates.
For Stool locations see Sheet 7.
For Section D-D see Sheet 7.
All necessary stainless steel bolts, studs, washers, nuts, plates and angles for the neoprene trough shall be included with "Furnishing and Erecting Structural Steel".

FINGER PLATE DETAILS
AT PIERS 9 & 12
F.A.I. RT. 180 SEC. (06-3, 78-1)BM
BUREAU AND PUTNAM COUNTIES
STA. 69+29.50
STR. No. 078-0001

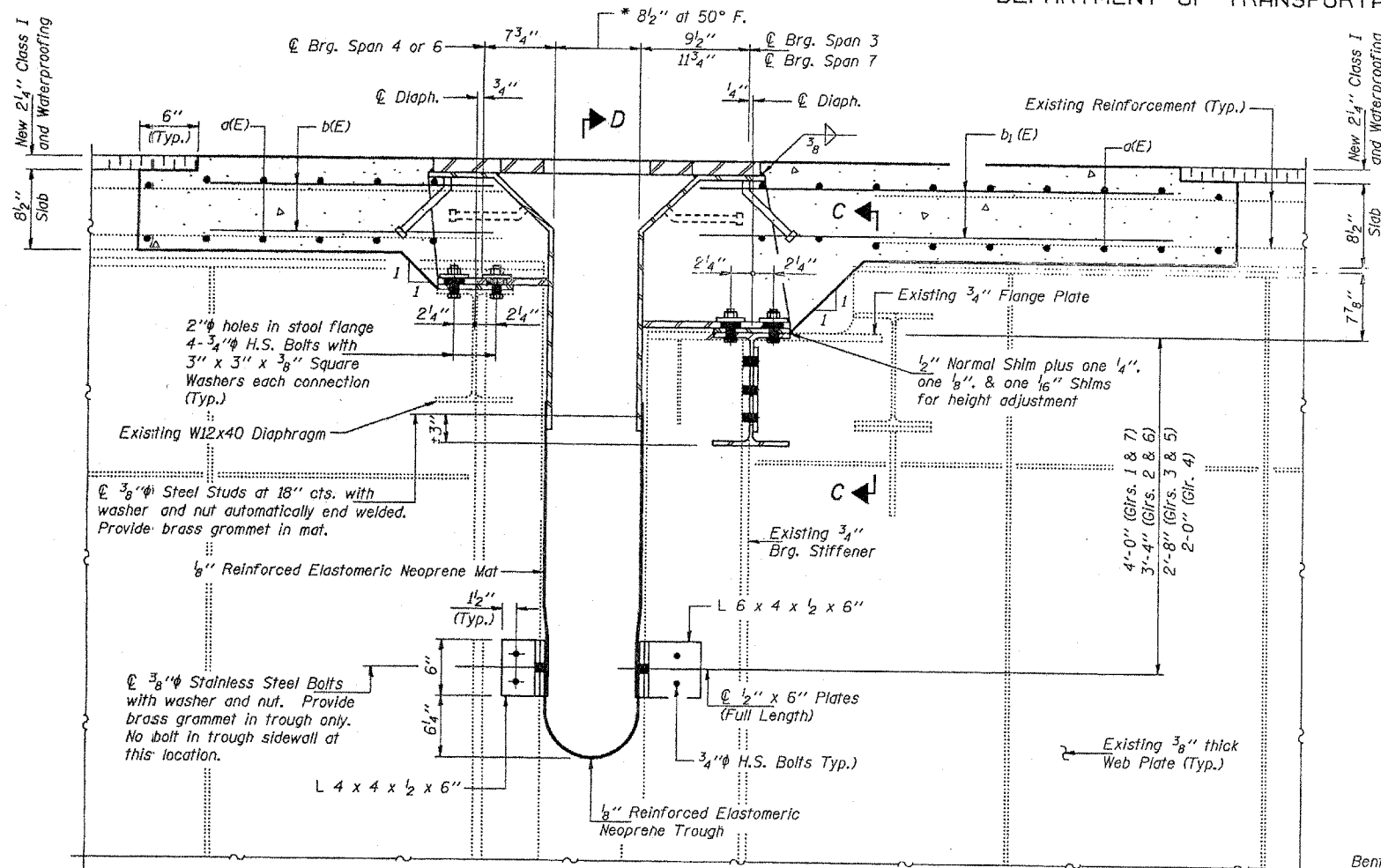
DESIGNED CHM	EXAMINED Paul E. Summer
CHECKED Paul Summer	PASSED
DRAWN Paul Summer	APPROVED
CHECKED CHM	DIRECTOR OF HIGHWAYS

November 30 1992

STATE OF ILLINOIS
DEPARTMENT OF TRANSPORTATION

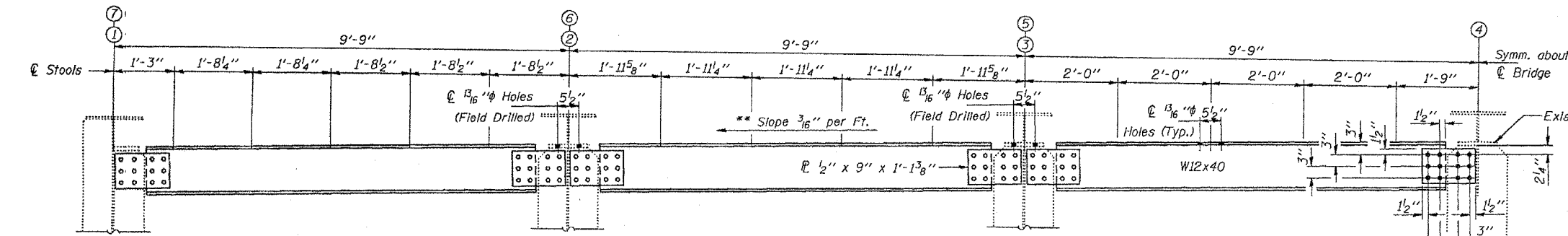
CONTRACT NO. 64945

F.A.I. RT. NO.	SECTION	COUNTY	TOTAL SHEET NO.	SHEET NO.
180	06-3, 78-1(BM)		15	15
STA. TO STA.				
FED. ROAD DIST. NO.		ILLINOIS FED. AID PROJECT		
** Bureau & Putnam Counties				



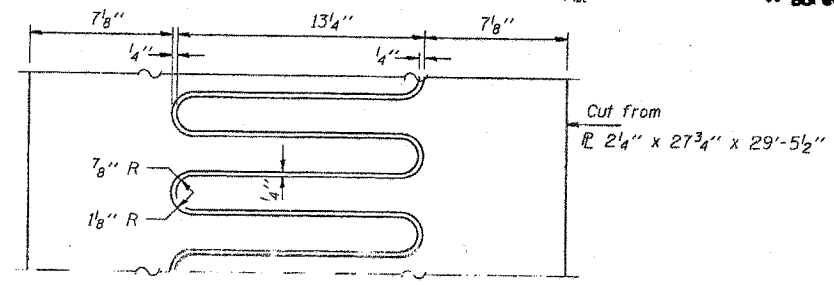
SECTION B-B

* Add 1/8" per each 100' of expansion for every 15° below the normal temperature of 50° F.
Subtract 1/8" per each 100' of expansion for every 15° above the normal temperature of 50° F.
(Total Expansion = 827'-6" Pier 3)
(Total Expansion = 742'-6" Pier 6)



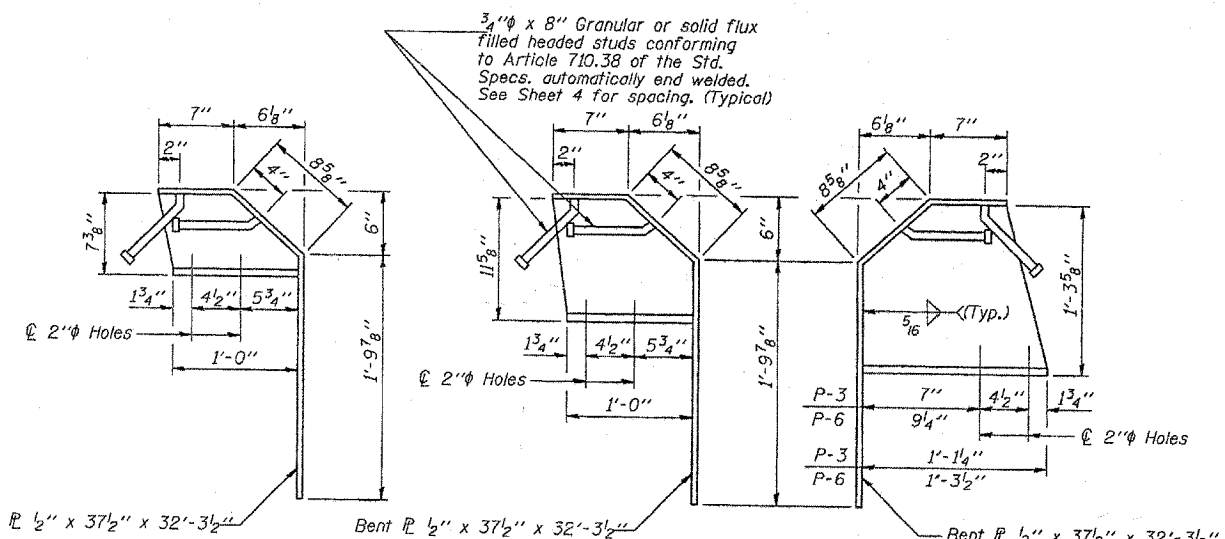
SECTION C-C
NEW DIAPHRAGMS AT PIER 3 SPAN 3 AND PIER 6 SPAN 7

(LOOKING WEST SPAN 3 LOOKING EAST SPAN 7)
** Match top and slope of new W12x40 diaphragms with the existing 3/4" flange plates.



FINGER PLATE DETAIL

(4 Thus Required)



STOOL A

STOOL B

STOOL C

Notes: All stools cut from W30x99 or equivalent plates. For Stool locations see Sheet 4. For Section D-D see Sheet 7. All necessary stainless steel bolts, studs, washers, nuts, plates and angles for the neoprene trough shall be included with "Furnishing and Erecting Structural Steel". 5/16 inch holes for 3/4 inch H.S. Bolts with 2 hardened washers shall be used for all new diaphragm connections.

DESIGNED	CHM	EXAMINED	November 30 1992 Paul E. Adams ENGINEER OF STRUCTURAL SERVICES
CHECKED	Paul Sumner	PASSED	
DRAWN	Paul Sumner	APPROVED	ENGINEER OF BRIDGES AND STRUCTURES
CHECKED	CHM		DIRECTOR OF HIGHWAYS

FOR INFORMATION ONLY

FINGER PLATE DETAILS
AT PIERS 3 & 6
F.A.I. RT. 180 SEC. (06-3, 78-1)BM
BUREAU AND PUTNAM COUNTIES
STA. 69+29.50
STR. No. 078-0001