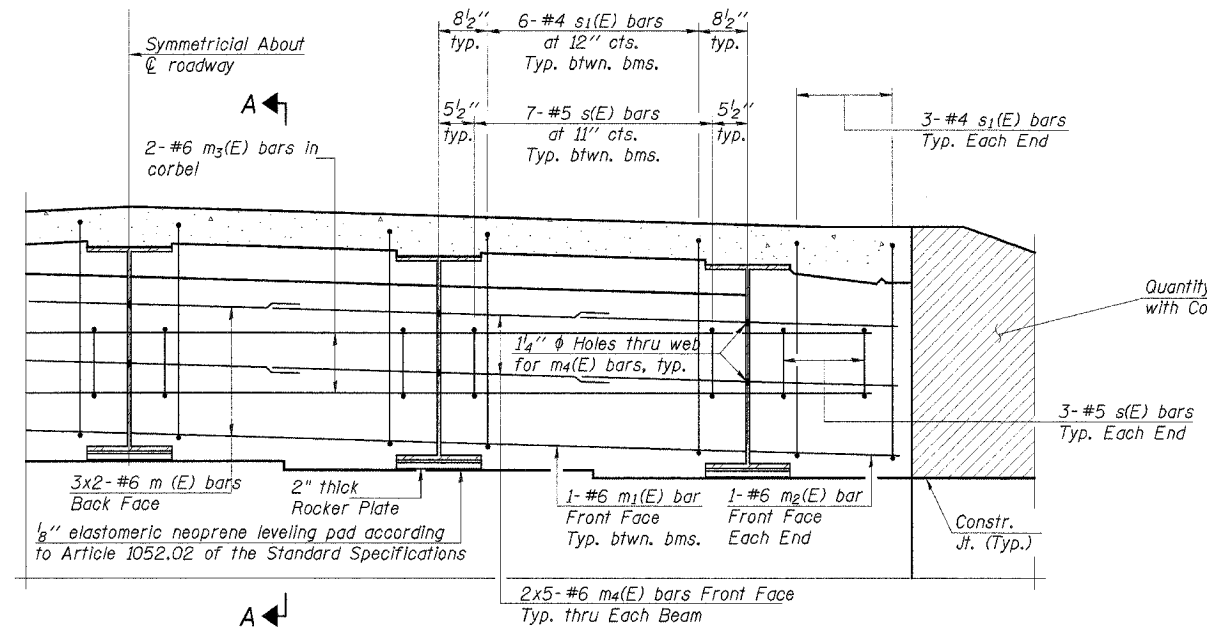
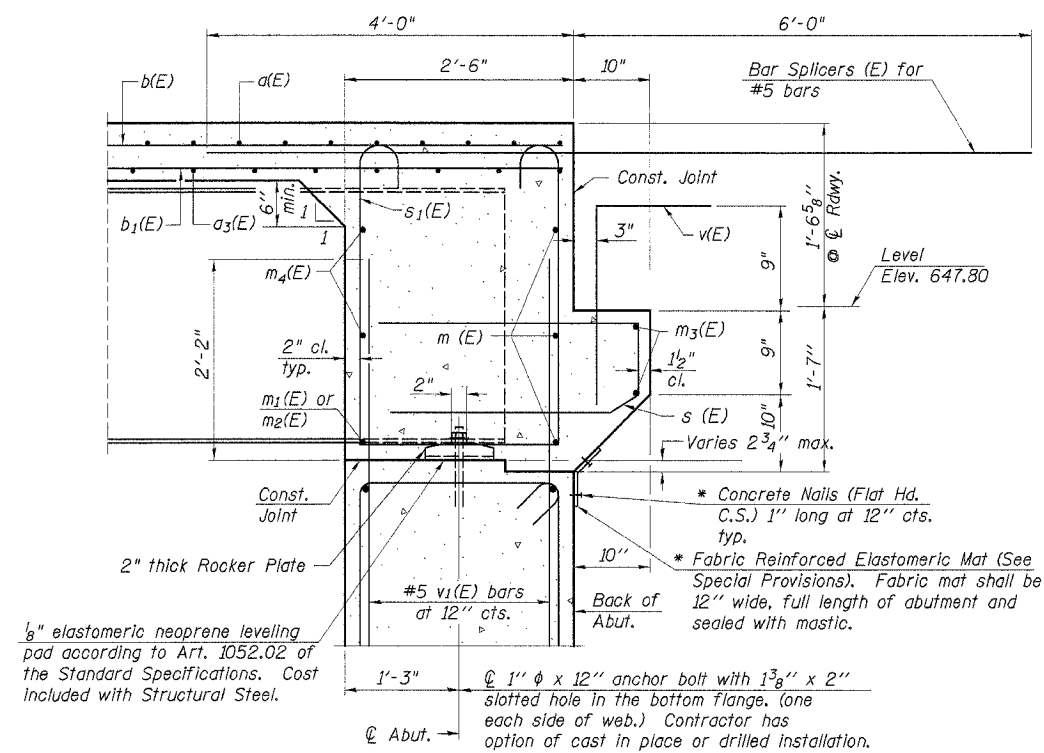


ROUTE NO.	SECTION	COUNTY	TOTAL SHEETS	SHEET NO.
C.H. 5 FAS 467	03-00027 -11-BR	TAZEWELL	24	10
		ILLINOIS	PROJ. BRS-467(104)	

CONTRACT NO. 89361 Sheet 6 of 15



**DIAPHRAGM ELEVATION AT ABUTMENT**



**SECTION A-A**

\* Cost included with Concrete Superstructure.

Notes: For anchor bolt details see sheet 10 of 15.

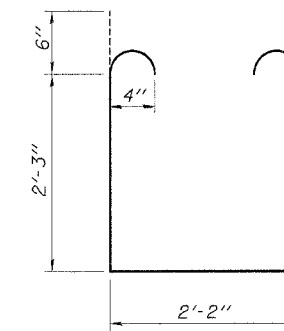
**MIN. BAR LAP**

#6 bar = 2'-9"

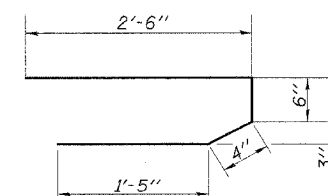
**SUPERSTRUCTURE  
BILL OF MATERIAL**

BAR	NO.	SIZE	LENGTH	SHAPE
a(E)	173	#5	29'-8"	—
a1(E)	174	#6	5'-10"	—
a2(E)	174	#5	3'-3"	—
a3(E)	135	#5	29'-0"	—
b(E)	136	#5	26'-6"	—
b1(E)	150	#5	21'-6"	—
b2(E)	58	#6	22'-0"	—
m(E)	12	#6	16'-3"	—
m1(E)	8	#6	6'-0"	—
m2(E)	4	#6	1'-10"	—
m3(E)	4	#6	29'-8"	—
m4(E)	20	#6	8'-2"	—
s(E)	68	#5	4'-9"	—
s1(E)	60	#4	7'-8"	—
v(E)	60	#5	2'-9"	—
Reinforcement Bars, Epoxy Coated			Pound	22,210
Concrete Superstructures			Cu. Yd.	99.8
Protective Coat			Sq. Yd.	336
Bridge Deck Grooving			Sq. Yd.	314
Bar Splicers			Each	60

Reinforcement bars designated (E) shall be epoxy coated.



**BAR s1(E)**



**BAR s(E)**

DESIGNED	S.F.M.
CHECKED	P.S.L. & F.J.S.
DRAWN	K.T.R., J.P.S. & S.A.P.
CHECKED	S.F.M.
<b>SI-DS1</b>	9-01-03

**SUPERSTRUCTURE DETAILS**

SECTION 03-00027-11-BR  
COUNTY HIGHWAY 5  
TAZEWELL COUNTY  
STA. 61+32

4440 ASH GROVE SPRINGFIELD, IL 62711 (217) 793-8300 oasinc@famvid.com	<b>OZYURT AND STONE, INC.</b> CONSULTING ENGINEERS	JOB NO.: 0313 FILE: SUPER02.DGN DATE: 12/30/04
--	---	--