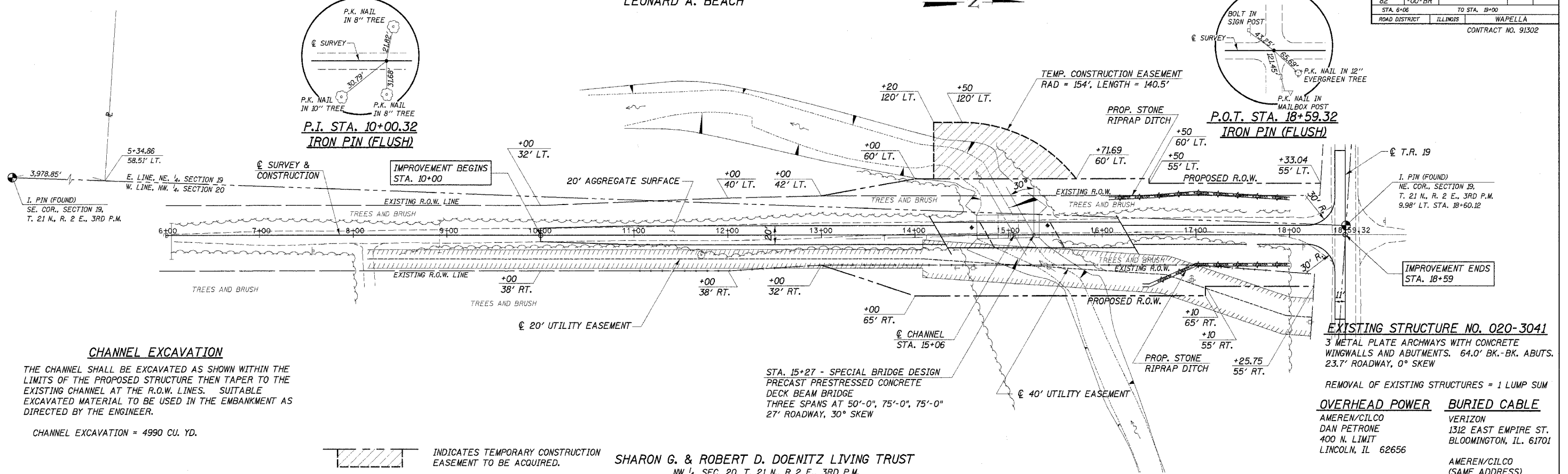


NE 1/4, SEC. 19, T. 21 N., R. 2 E., 3RD P.M.  
LEONARD A. BEACH

ROUTE	SECTION	COUNTY	TOTAL SHEETS	SHEET NO.
T.R. 82	01-11135 -00-BR	DEWITT	17	3
ROAD DISTRICT ILLINOIS			WAPELLA	
STA. 6+00 TO STA. 19+00			CONTRACT NO. 91302	

DATE	
BY	
DESIGNED	
CHECKED	
PLANNED	
NOTED	
NO. 1	
NO. 2	

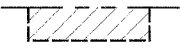
DATE	
BY	
DESIGNED	
CHECKED	
PLANNED	
NOTED	
NO. 1	
NO. 2	



**CHANNEL EXCAVATION**

THE CHANNEL SHALL BE EXCAVATED AS SHOWN WITHIN THE LIMITS OF THE PROPOSED STRUCTURE THEN TAPER TO THE EXISTING CHANNEL AT THE R.O.W. LINES. SUITABLE EXCAVATED MATERIAL TO BE USED IN THE EMBANKMENT AS DIRECTED BY THE ENGINEER.

CHANNEL EXCAVATION = 4990 CU. YD.



INDICATES TEMPORARY CONSTRUCTION EASEMENT TO BE ACQUIRED.

SHARON G. & ROBERT D. DOENITZ LIVING TRUST  
NW 1/4, SEC. 20, T. 21 N., R. 2 E., 3RD P.M.

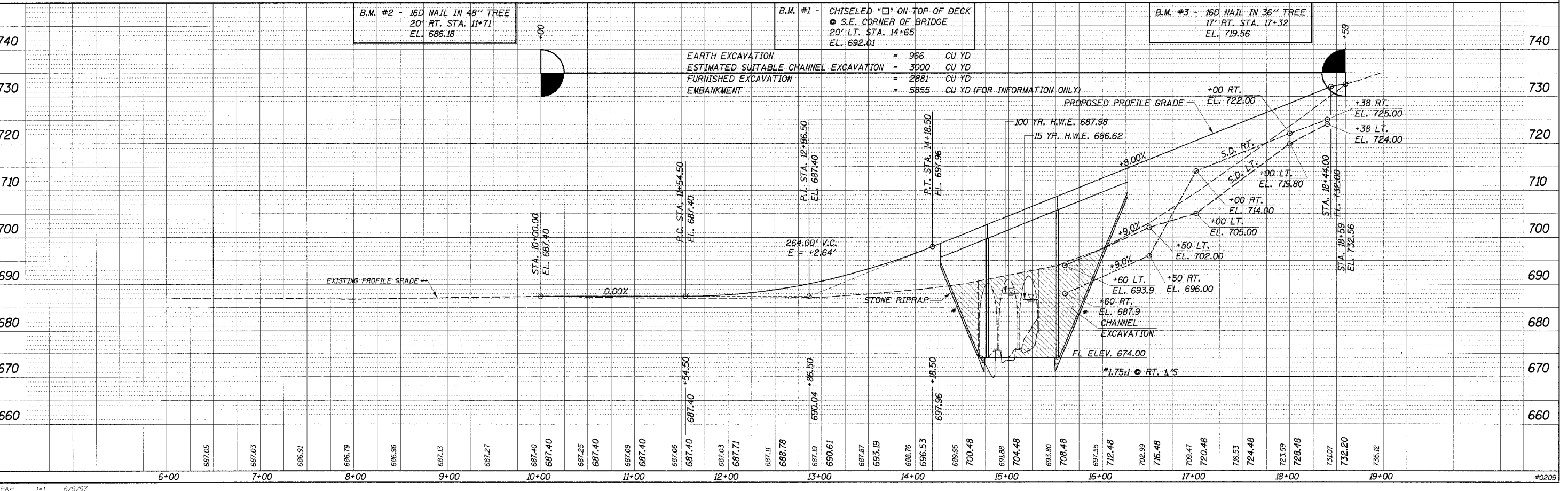
**EXISTING STRUCTURE NO. 020-3041**  
3' METAL PLATE ARCHWAYS WITH CONCRETE WINGWALLS AND ABUTMENTS. 64.0' BK.-BK. ABUTS. 23.7' ROADWAY, 0° SKEW

REMOVAL OF EXISTING STRUCTURES = 1 LUMP SUM

**OVERHEAD POWER BURIED CABLE**  
AMEREN/CILCO  
DAN PETRONE  
400 N. LIMIT  
LINCOLN, IL 62656

VERIZON  
1312 EAST EMPIRE ST.  
BLOOMINGTON, IL. 61701

AMEREN/CILCO  
(SAME ADDRESS)



EARTH EXCAVATION	= 966	CU YD
ESTIMATED SUITABLE CHANNEL EXCAVATION	= 3000	CU YD
FURNISHED EXCAVATION	= 2881	CU YD
EMBANKMENT	= 5855	CU YD (FOR INFORMATION ONLY)