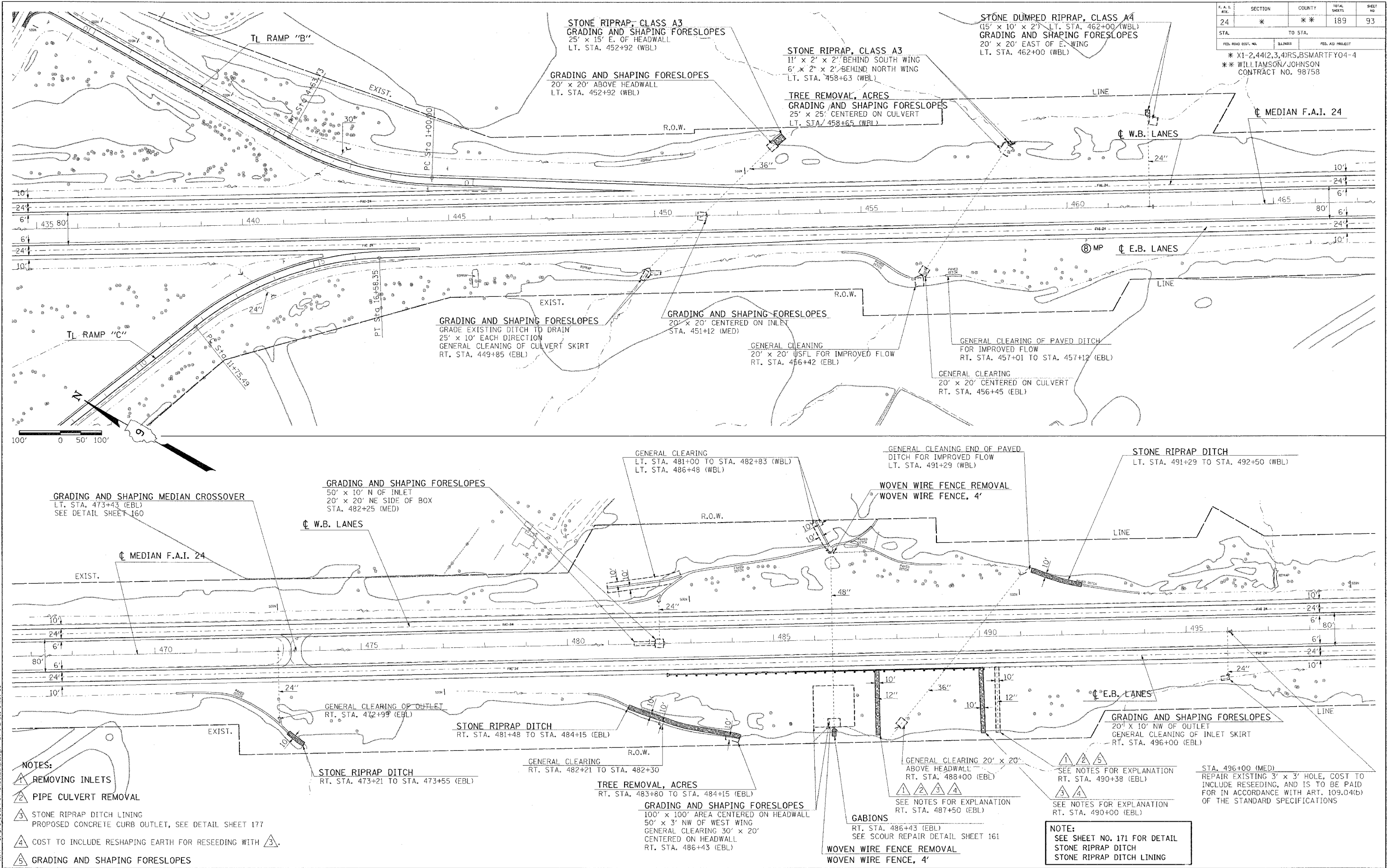


F.A.I.	SECTION	COUNTY	TOTAL SHEETS	SHEET NO.
24	*	**	189	93
STA. TO STA.		FED. ROAD DIST. NO.		
		ILLINOIS		
		FED. AID PROJECT		
		* X1-2,44(2,3,4)RS.BSMARTFY04-4		
		** WILLIAMSON/JOHNSON		
		CONTRACT NO. 98758		



Wednesday, November 7, 2004 10:59:49 AM
 c:\projects\98758\102\98758102e2.dgn LV=2,4,5,20,22,24,47,80-83
 11016 c:\projects\98758\102\98758102e2.dgn LV=2,4,5,20,22,24,47,80-83
 11016 c:\projects\98758\102\98758102e2.dgn LV=2,4,5,20,22,24,47,80-83

Wednesday, November 7, 2004 10:59:49 AM
 c:\projects\98758\102\98758102e2.dgn LV=2,4,5,20,22,24,47,80-83
 11016 c:\projects\98758\102\98758102e2.dgn LV=2,4,5,20,22,24,47,80-83
 11016 c:\projects\98758\102\98758102e2.dgn LV=2,4,5,20,22,24,47,80-83

- NOTES:**
- 1 REMOVING INLETS
 - 2 PIPE CULVERT REMOVAL
 - 3 STONE RIPRAP DITCH LINING
PROPOSED CONCRETE CURB OUTLET, SEE DETAIL SHEET 177
 - 4 COST TO INCLUDE RESHAPING EARTH FOR RESEEDING WITH 3.
 - 5 GRADING AND SHAPING FORESLOPES

SEE NOTES FOR EXPLANATION
 RT. STA. 490+38 (EBL)
 SEE NOTES FOR EXPLANATION
 RT. STA. 490+00 (EBL)
NOTE:
 SEE SHEET NO. 171 FOR DETAIL
 STONE RIPRAP DITCH
 STONE RIPRAP DITCH LINING