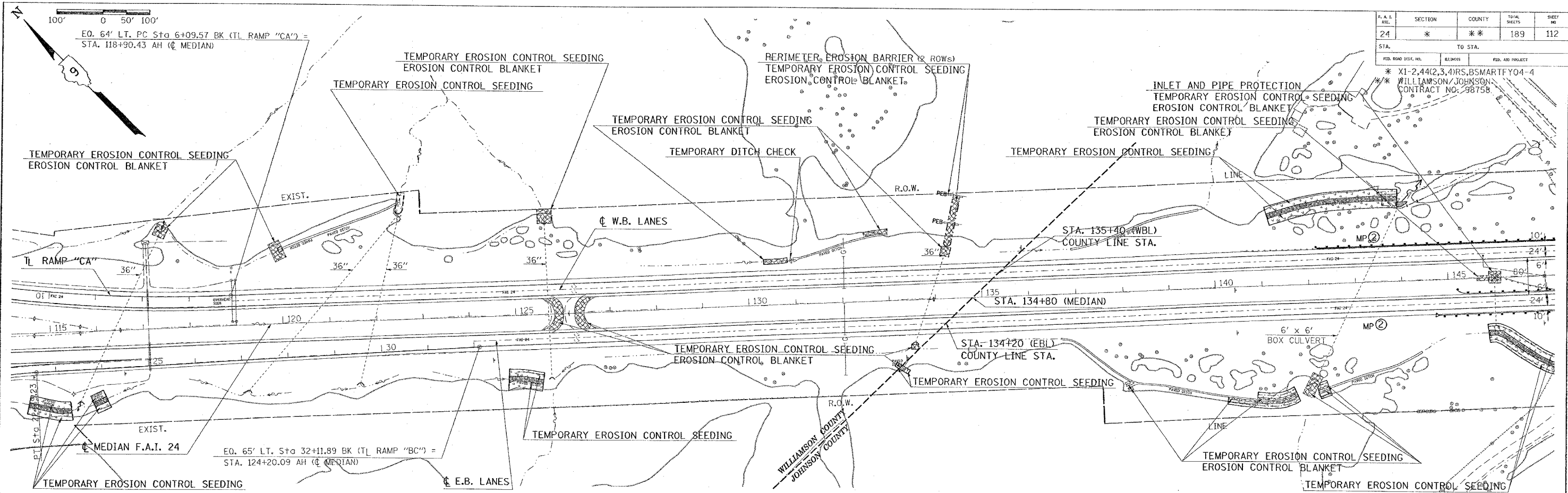
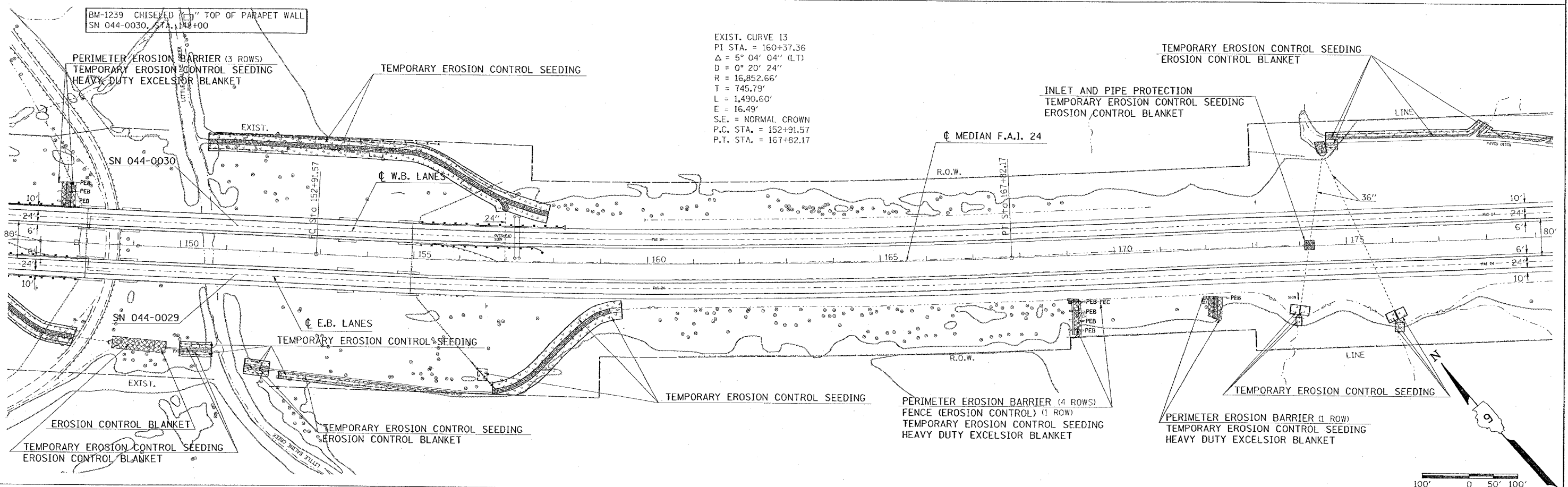


F.A.I. ETL.	SECTION	COUNTY	TOTAL SHEETS	SHEET NO.
24	*	**	189	112

STA. TO STA.
 * X1-2.44(2,3,4)RS.BSMARTFY04-4
 ** WILLIAMSON/JOHNSON
 CONTRACT NO. 98758



Tuesday, December 14, 2004 @ 8:38:38 AM
 1004A d:\p\projects\1004\1004.dwg LV:2.4-35.37-47.82-63
 1004B d:\p\projects\1004\1004.dwg LV:1-19.21-35.37-44.46-49.01-63
 1004C d:\p\projects\1004\1004.dwg LV:1-24.31-53.61-63
 1004D d:\p\projects\1004\1004.dwg LV:1-24.31-53.61-63



Tuesday, December 14, 2004 @ 8:38:38 AM
 1004A d:\p\projects\1004\1004.dwg LV:2.4-35.37-47.82-63
 1004B d:\p\projects\1004\1004.dwg LV:1-19.21-35.37-44.46-49.01-63
 1004C d:\p\projects\1004\1004.dwg LV:1-24.31-53.61-63
 1004D d:\p\projects\1004\1004.dwg LV:1-24.31-53.61-63

EXIST. CURVE 13
 PI STA. = 160+37.36
 $\Delta = 5^\circ 04' 04''$ (LT)
 $D = 0^\circ 20' 24''$
 $R = 16,852.66'$
 $T = 745.79'$
 $L = 1,490.60'$
 $E = 16.49'$
 $S.E. = \text{NORMAL CROWN}$
 $P.C. STA. = 152+91.57$
 $P.T. STA. = 167+82.17$

TEMPORARY EROSION CONTROL STA. 115+00 TO STA. 179+00