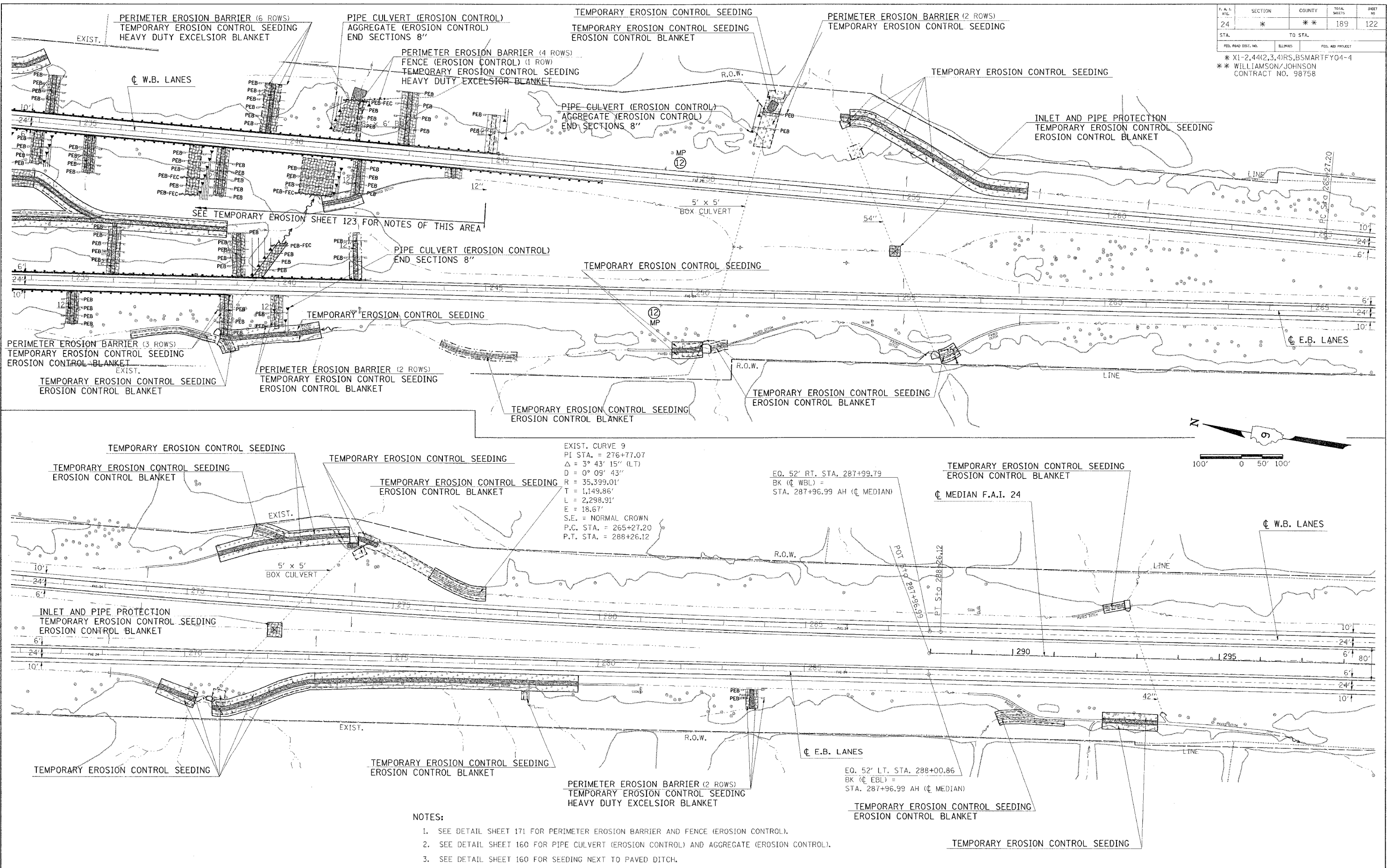


F.A.I. NO.	SECTION	COUNTY	TOTAL SHEETS	SHEET NO.
24	*	**	189	122
STA. TO STA.				
FED. ROAD DIST. NO.		ILLINOIS	FED. AID PROJECT	
* X1-2.44(2,3,4)RS,BSMARTFY04-4				
** WILLIAMSON/JOHNSON				
CONTRACT NO. 98758				



EXIST. CURVE 9
 PI STA. = 276+77.07
 $\Delta = 3^\circ 43' 15''$ (LT)
 $D = 0^\circ 09' 43''$
 $R = 35,399.01'$
 $T = 1,149.86'$
 $L = 2,298.91'$
 $E = 18.67'$
 S.E. = NORMAL CROWN
 P.C. STA. = 265+27.20
 P.T. STA. = 288+26.12

EQ. 52' RT. STA. 287+99.79
 BK (C WBL) =
 STA. 287+96.99 AH (C MEDIAN)

TEMPORARY EROSION CONTROL SEEDING
 EROSION CONTROL BLANKET
 C MEDIAN F.A.I. 24

EQ. 52' LT. STA. 288+00.86
 BK (C EBL) =
 STA. 287+96.99 AH (C MEDIAN)

NOTES:

- SEE DETAIL SHEET 171 FOR PERIMETER EROSION BARRIER AND FENCE (EROSION CONTROL).
- SEE DETAIL SHEET 160 FOR PIPE CULVERT (EROSION CONTROL) AND AGGREGATE (EROSION CONTROL).
- SEE DETAIL SHEET 160 FOR SEEDING NEXT TO PAVED DITCH.

TEMPORARY EROSION CONTROL STA. 234+00 TO STA. 298+00

Wednesday, October 27, 2004 8:30:34 AM
 c:\puro\jct\ta\9802102\2004\2004.LV-2.4.4-35.37-47.62-63
 118AA c:\puro\jct\ta\9802102\2004\2004.LV-1.11.21.23.25-35.37-49.61-62
 1181P c:\puro\jct\ta\9802102\2004\2004.LV-2.4.4-35.37-47.62-63