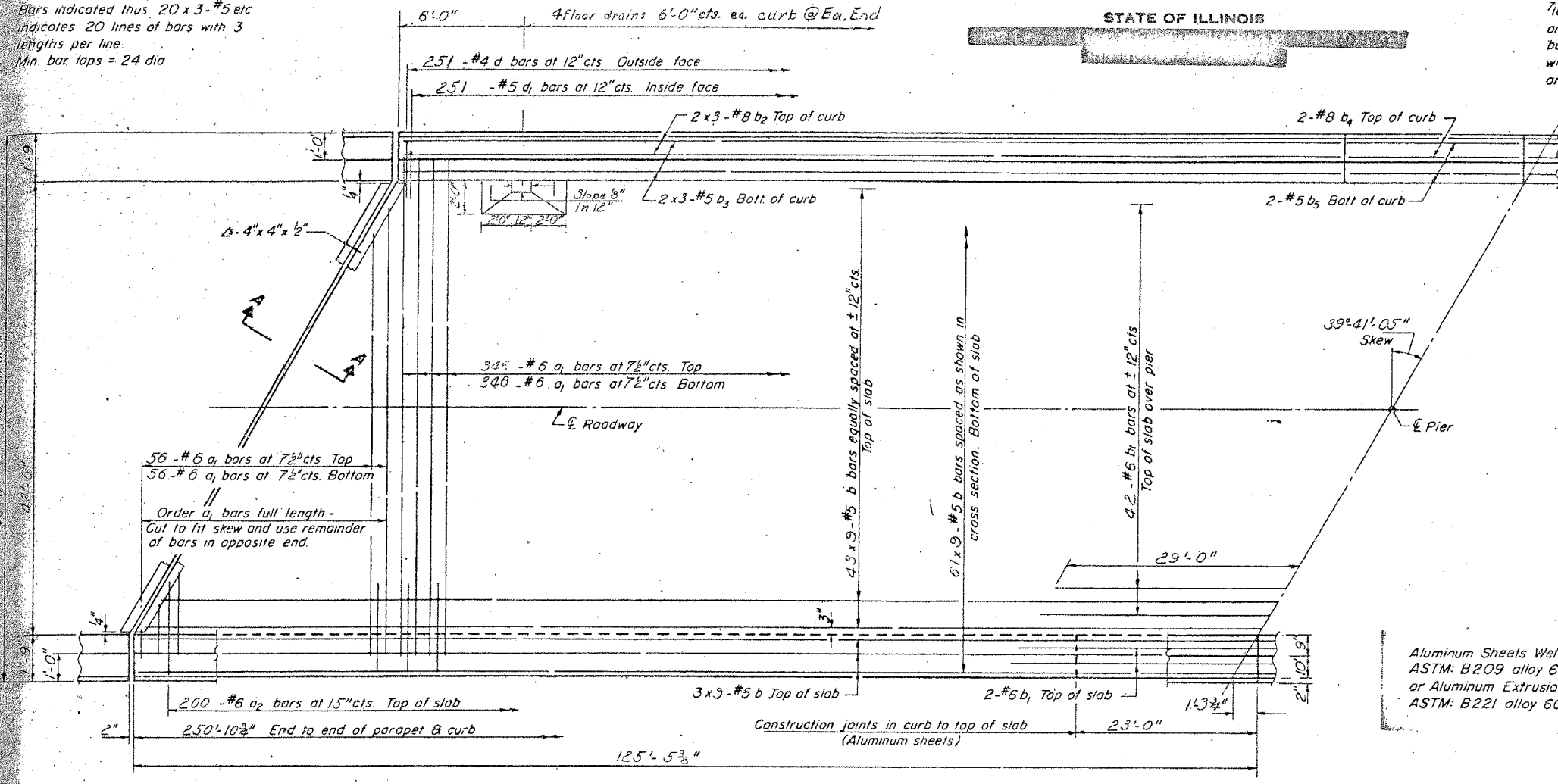
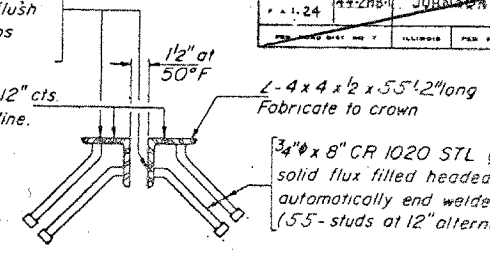


Bars indicated thus 20 x 3-#5 etc indicates 20 lines of bars with 3 lengths per line.
 Mn. bar laps = 24 dia



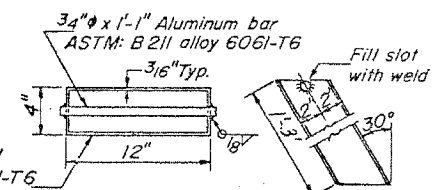
HALF PLAN

7/16" holes at 12" cts. for 3/8" bolts set on 2 1/2" gage line. All bolts shall be burned, sawed or clipped off flush with back of angles after forms are removed.



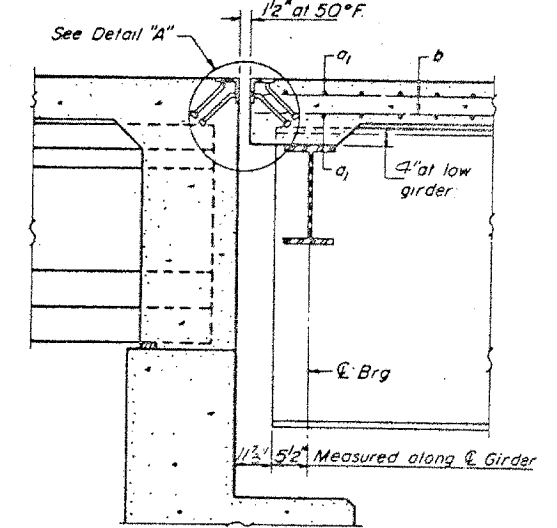
DETAIL "A"

FOR INFORMATION ONLY: THIS SHEET IS FROM THE ORIGINAL PLANS AND IS TO BE USED FOR REFERENCE ONLY.



FLOOR DRAIN

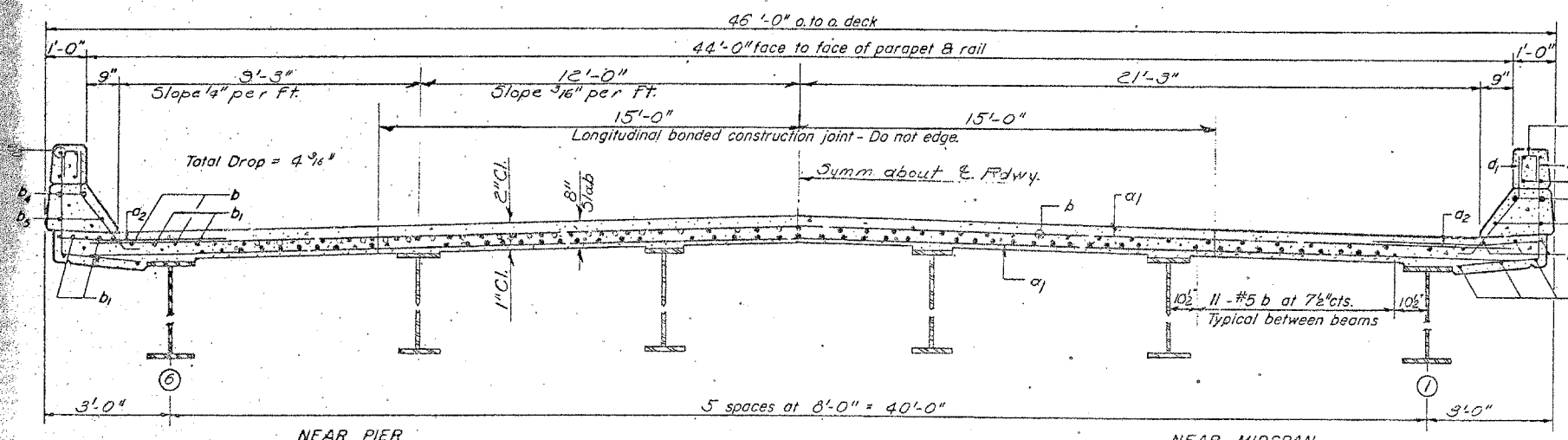
Cost incidental to Class X Concrete



SECTION A-A

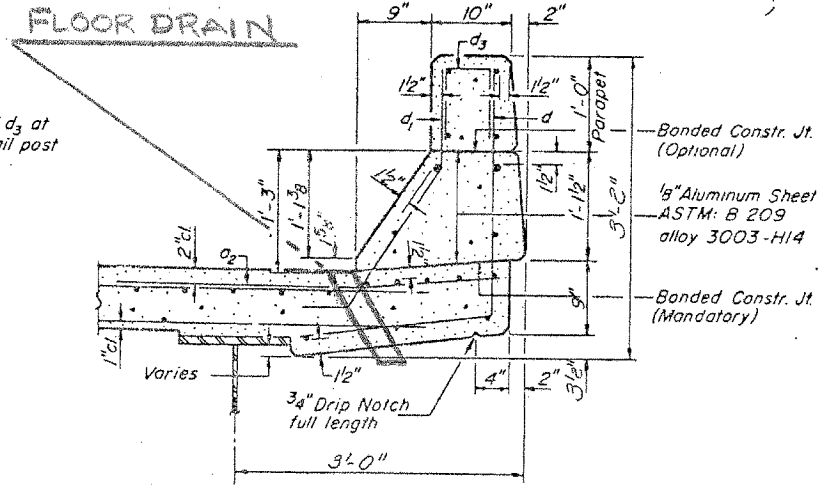
BILL OF MATERIAL

Bar	No	Size	Length	Shape
a1	603	#6	45'-0"	
a2	400	#6	4'-0"	
b	990	#5	29'-0"	
b1	46	#6	58'-0"	
b2	24	#8	35'-0"	
b3	24	#5	35'-0"	
b4	6	#8	22'-9"	
b5	8	#5	22'-9"	
d	502	#4	4'-6"	
d1	502	#5	3'-3"	
Reinforcement Bars		Lbs	97730	
Class X Concrete		Cu Yds	2770	
Steel Strap Conn.		Ea.	2700	



CROSS SECTION

NOTE: For placement of bars d3 and e1 and e2 see sheet # 11



CURB SECTION

Cost of Aluminum Sheets shall be incidental to Class X Concrete.

Parapet Reinforcement and Class X Concrete are billed on sheet # 11

DESIGNED R. M. MATTHEW

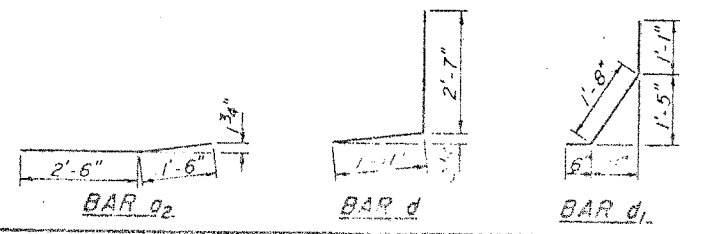
CHECKED S. V. DESAI

DRAWN F. COFFIN PH

CHECKED S.D.

APPROVED

APPROVED



SUPERSTRUCTURE MAIN SPAN

FAI. RT. 24 SEC. 44-2HB-1

JOHNSON COUNTY

STA. 203 + 80 - 85

SN 044-0031 (OVERHEAD)