

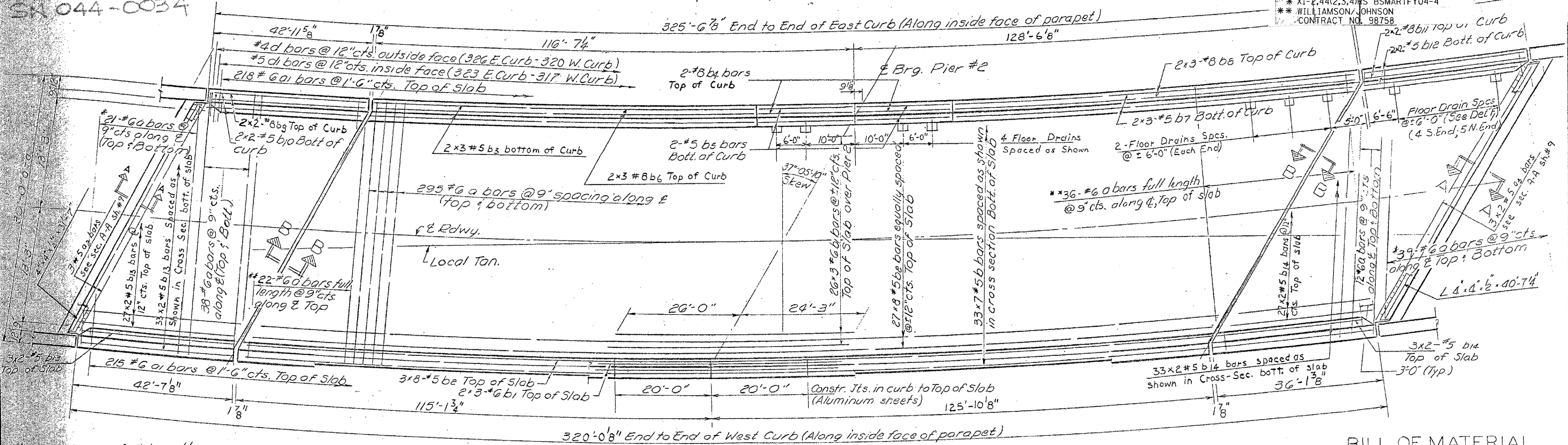
Note: Bars indicated thus 26x3 #6 etc. indicate 26 lines of bars with 3 lengths per line. Min. bar laps = 24 dia.

SK 044-0034

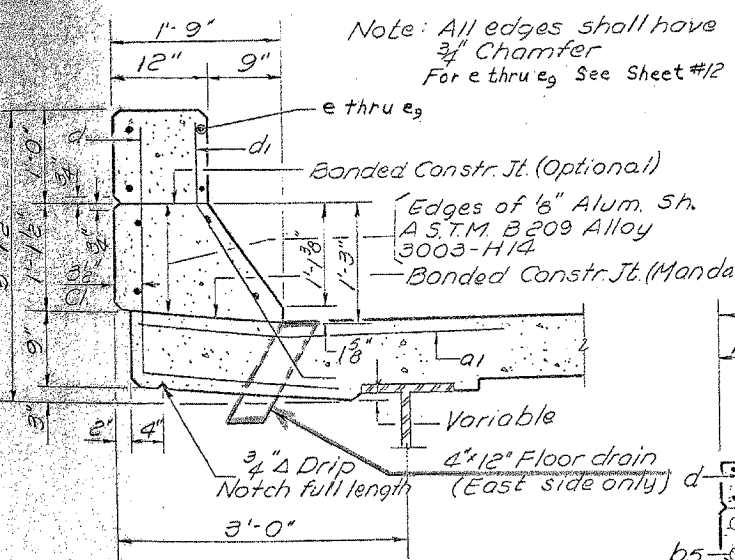
STATE OF ILLINOIS

FOR INFORMATION ONLY:
THIS SHEET IS FROM THE ORIGINAL PLANS AND IS TO BE USED FOR REFERENCE ONLY.

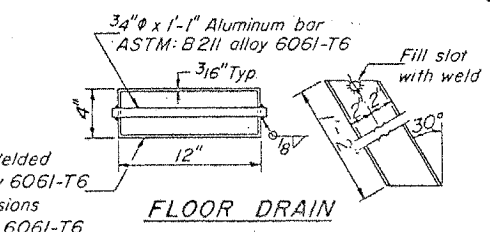
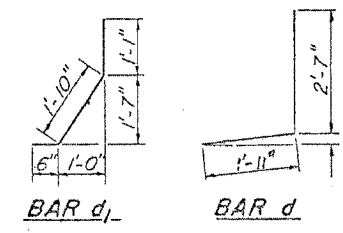
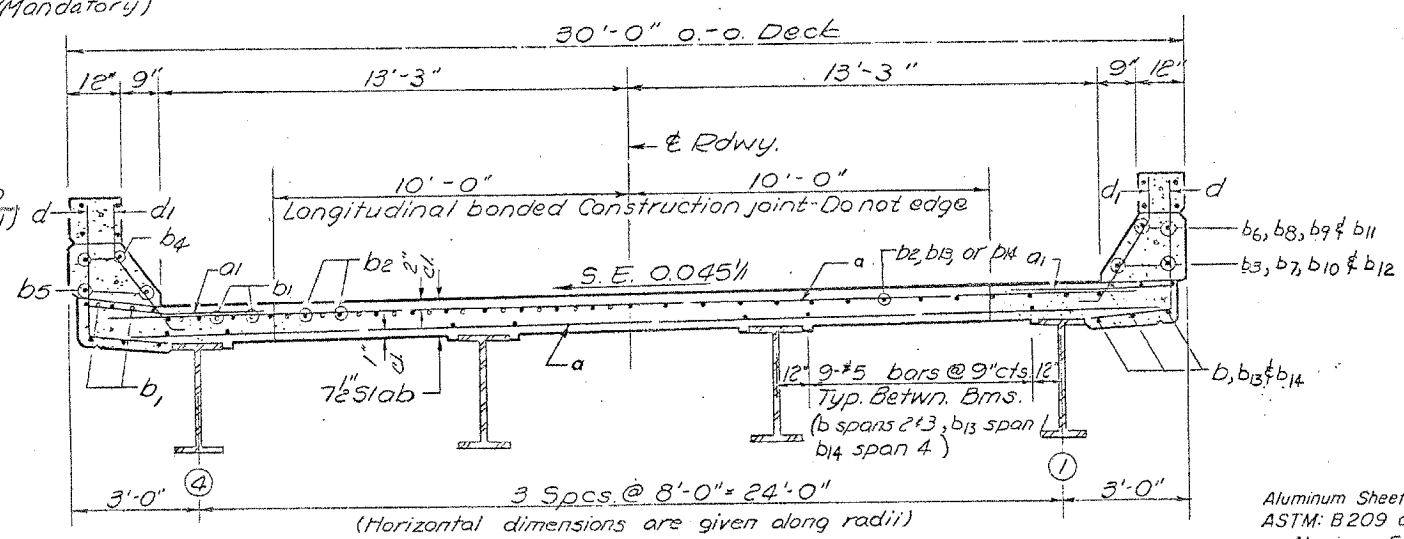
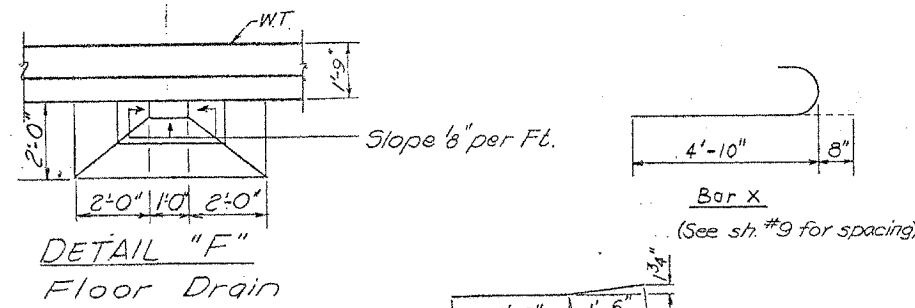
SECTION	COUNTY	TOTAL SHEETS	SHEET NO.
24 SHEETS *	**	189	153A
STA.	TO STA.		
FED. ROAD DIST. NO.	ALTERN.	FED. AID PROJECT	
* XT-2,44(2,3,4) BS BSMARTFY04-4			
** WILLIAMSON/JOHNSON			
CONTRACT NO. 98758			



* Order a bars full length cut to fit skew and use remainder of bars in opposite end of span.
* Cut to fit skew and use remainder of bars at bottom.



PLAN
Note: Place Reinforcement Bars along radii.
For Sec. A-A & B-B see Sh.#9



BILL OF MATERIAL

Bar	No.	Size	Length	Shape
a	368	#6	28'-3"	—
a1	433	#6	4'-0"	—
a2	3	#5	31'-3"	—
a3	6	#5	20'-9"	—
b	231	#5	36'-0"	—
b1	90	#6	17'-9"	—
b2	264	#5	31'-9"	—
b3	12	#5	33'-0"	—
b4	8	#8	19'-9"	—
b5	8	#5	19'-9"	—
b6	12	#8	33'-6"	—
b7	12	#5	37'-0"	—
b8	12	#8	37'-6"	—
b9	8	#8	22'-6"	—
b10	8	#5	22'-0"	—
b11	8	#8	19'-6"	—
b12	8	#5	19'-3"	—
b13	132	#5	22'-3"	—
b14	132	#5	19'-6"	—
d	646	#4	4'-6"	—
d1	640	#5	3'-5"	—
x	52	#6	5'-6"	—
Reinforcement Bars				Lbs. 74,860
Class X Concrete				Cu.Yds. 274.8
* Structural Steel				Lbs. 353,355

* Weight of bearing assemblies with lead plates and anchor bolts are included as Structural Steel Wt. = 9300 LBS.
Parapet Reinforcement and Class X Concrete are billed on sheet #12

DESIGNED: Emile A. Samara
CHECKED: A. Keramat
DRAWN: F. Mercado
CHECKED: A.K.
EXAMINED: [Signature]
PASSED: [Signature]
APPROVED: [Signature]

NEAR PIER 2 CROSS SECTION NEAR MIDSPAN
Looking up Station

SN 044-0034
SUPERSTRUCTURE
F.A.I. RTE. 24 SEC. 44-3HB
JOHNSON COUNTY
STA. 333+01.64