

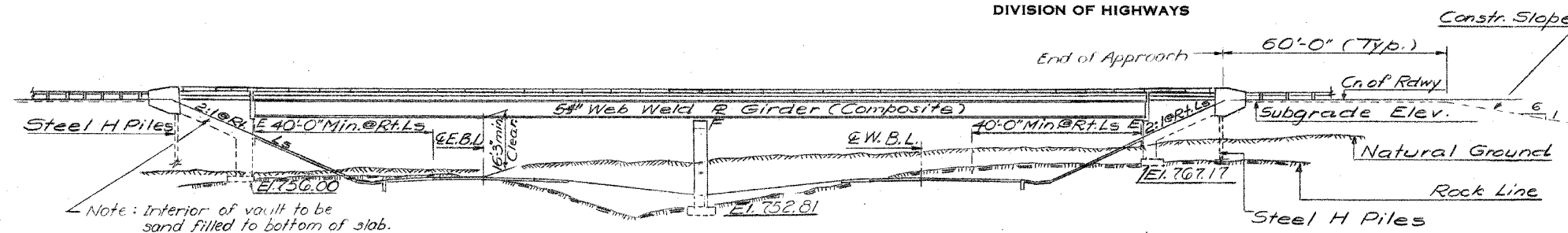
BM: Railroad spike in power pole 86'-0"
 Lt. Sta. 431+60 Elev. 779.72
 NO EXISTING STRUCTURE.

STATE OF ILLINOIS
 DEPARTMENT OF PUBLIC WORKS & BUILDINGS
 DIVISION OF HIGHWAYS

FOR INFORMATION ONLY
 THIS SHEET IS FROM THE
 ORIGINAL PLANS AND IS TO
 BE USED FOR REFERENCE ONLY.

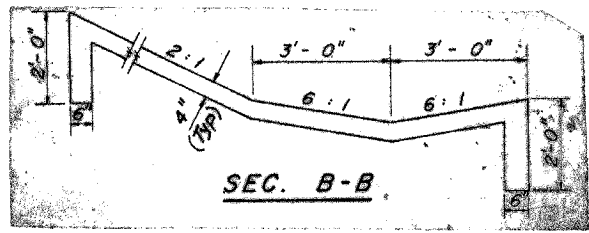
ROUTE NO.	SECTION	COUNTY	TOTAL SHEETS	SHEET NO.
24	44-3HB-1	JOHNSON	50	11
12 SHEETS				
FED. ROAD DIST. NO.	ILLINOIS	FED. AID PROJECT		
24	*	**	189	154
STA.	TO STA.			
FED. ROAD DIST. NO.	ILLINOIS	FED. AID PROJECT		

* X1-2,44(2,3,4)RS BSMARTFY04-4
 ** WILLIAMSON/JOHNSON
 CONTRACT NO. 98758

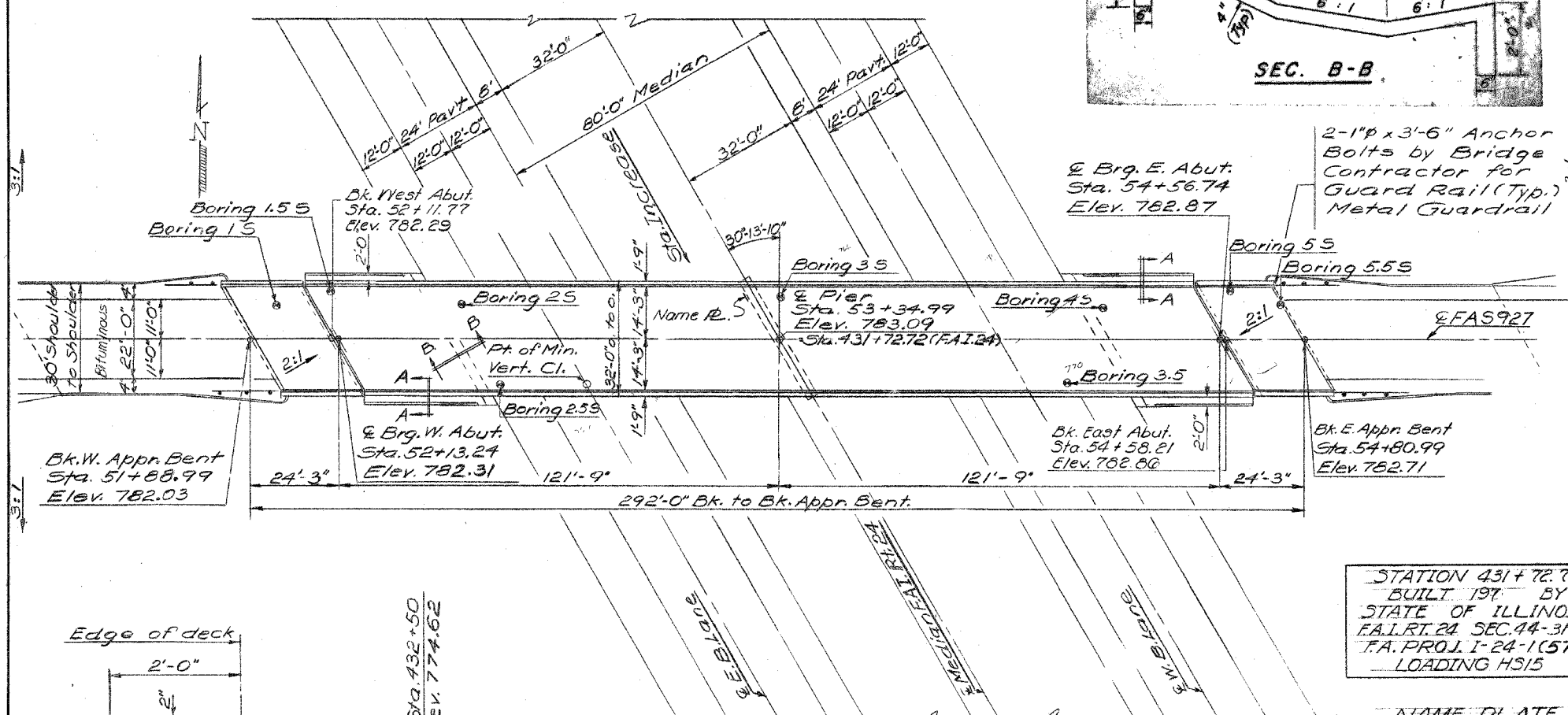


Note: Interior of vault to be sand filled to bottom of slab. See Special Provisions.

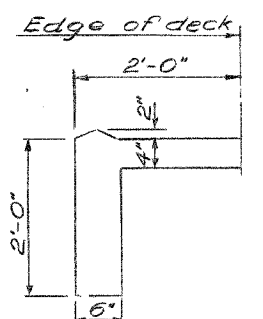
ELEVATION



SEC. B-B



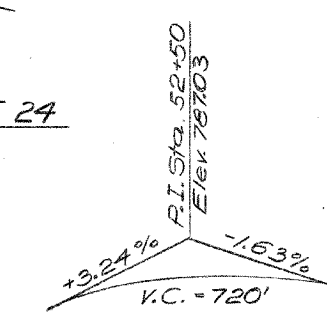
PLAN



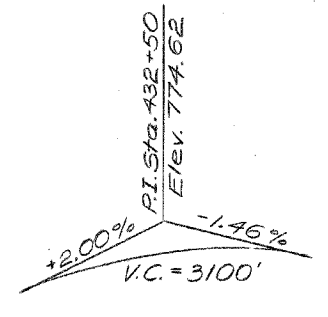
SEC. A-A

PROFILE F.A.I.R.T. 24 (West Bound)

DESIGNED R. Mathew
 CHECKED Suresh T. Desai
 DRAWN Jacobs
 CHECKED S.D.
 EXAMINED [Signature]
 PASSED [Signature]
 APPROVED [Signature]



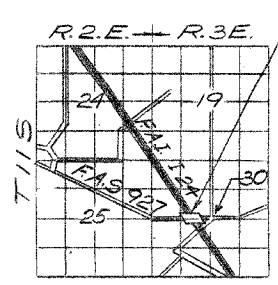
PROFILE F.A.S.R.T. 927 (East Bound)



PROFILE F.A.I.R.T. 24

DESIGN STRESSES
 $f_c = 1200$ psi - Deck Slab
 $f_c = 1400$ psi - Curb Parapet, Sub
 $f_s = 20,000$ psi - Reinf.
 $f_s = 20,000$ psi - Struct.
 $v_c = 75$ psi - Ftgs
 $n = 10$

Loading HS15-44
 Allowable Δ Defl. $\frac{TL}{200}$ Comp.
 Note: Allow 25#/ft for future Wearing Surf.



LOCATION SKETCH

GENERAL NOTES

All reinforcement bars shall be lapped 24 diameters unless otherwise shown.

The Basic Lead Silica Chromate paint system shall be used for shop and field painting of structural steel.

Field welding of construction accessories will not be permitted to the bottom flange of beams or girders nor to the top flange for a distance equal to one-fourth the span length each way from the pier supports. Field welding in other areas will be permitted only when approved by the Engineer.

Anchor bolts shall be set before bolting cross frames over supports. Slope wall shall be reinforced with welded wire fabric 6" x 6" mesh, weighing 58# per 100 sq. ft.

The Contractor shall make allowance for the deflection of forms, shrinkage and settlement of falsework, in addition to allowance for dead load deflection. The embankment configuration shown shall be the minimum embankment that must be constructed prior to construction of the abutments. The concrete rail section above the mandatory construction joint at the top of the slab shall be constructed of Class X Concrete, except the aggregates shall conform to the requirements of Handrail Concrete.

The Contractor shall drive one steel test pile in a permanent location at West Approach as directed by the Engineer before ordering the remainder of piles. Class A Excavation for Structures and Rock Excavation includes excavation for Slope Wall. Field connections shall be bolted using high strength bolts. Bolts 3/8", open holes 1/2", unless otherwise noted.

TOTAL BILL OF MATERIAL

Item	Unit	Super.	Sub.	Total
Rock Excavation for Structures	Cu. Yds.		150	150
Class A Excavation for Struct.	Cu. Yds.		240	240
Class X Concrete	Cu. Yds.	299.4	287.0	586.4
Structural Steel	Lump Sum	L.S.		L.S.
Reinforcement Bars	Lbs.	72 770	31080	103850
Aluminum Railing	Lin. Ft.	572		572
Steel Piles (8BP3G)	Lin. Ft.		155	155
Test Piles Steel (8BP3G)	Ea.		1	1
Name Plates	Ea.		1	1
Slope Wall (4")	Sq. Yds.		560	560
Protective Coat	Sq. Yds.	1150		1150
Bridge Seat Sealant	Lump Sum			L.S.
Stud Shear Connectors	Ea.	1710		1710
Sand Backfill	Cu. Yds.		175	175

* Calculated plan weight of Structural Steel - 272210 lbs.
 ** At Abutments only.

GENERAL PLAN & ELEVATION
 PROJECT: I-24-1(57)6
 F.A.I.R.T. 24 - SECTION 44-3HB-1
 JOHNSON COUNTY
 STA. 53+34.99 (F.A.S.927)
 STA. 431+72.72 (F.A.I.24)