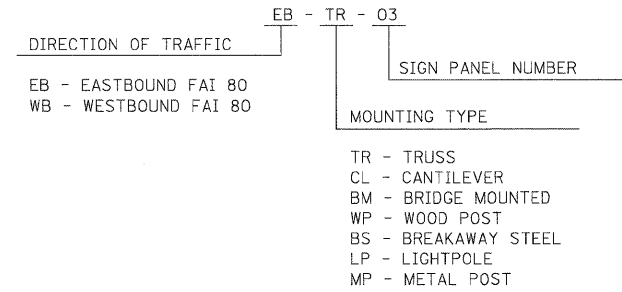
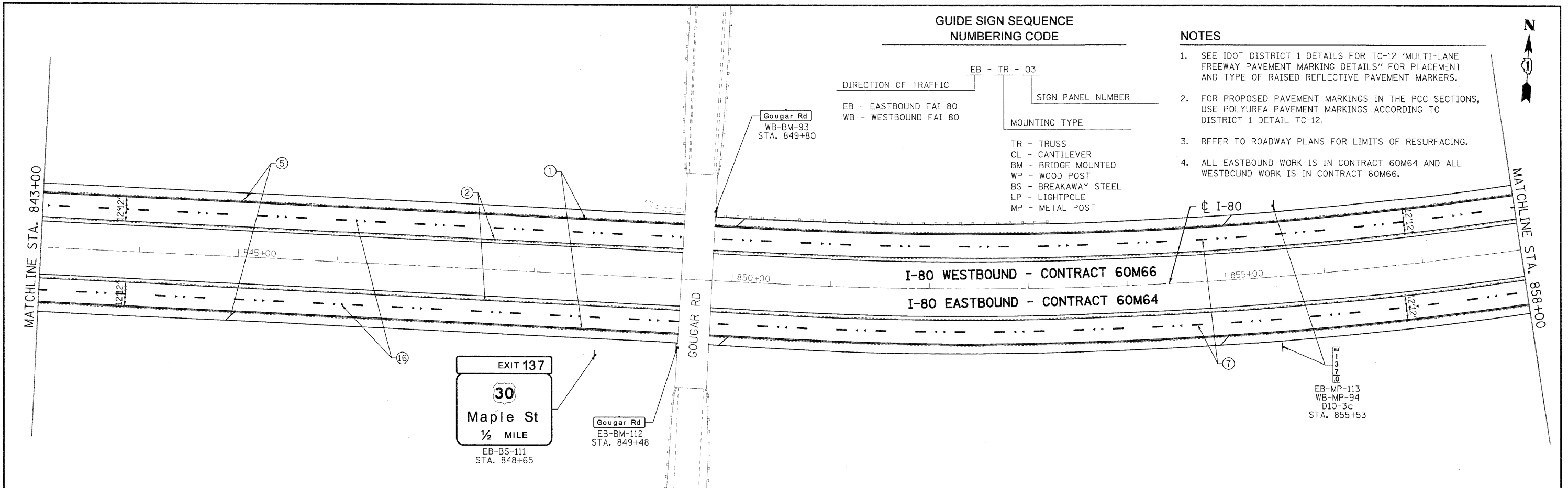


**GUIDE SIGN SEQUENCE
NUMBERING CODE**



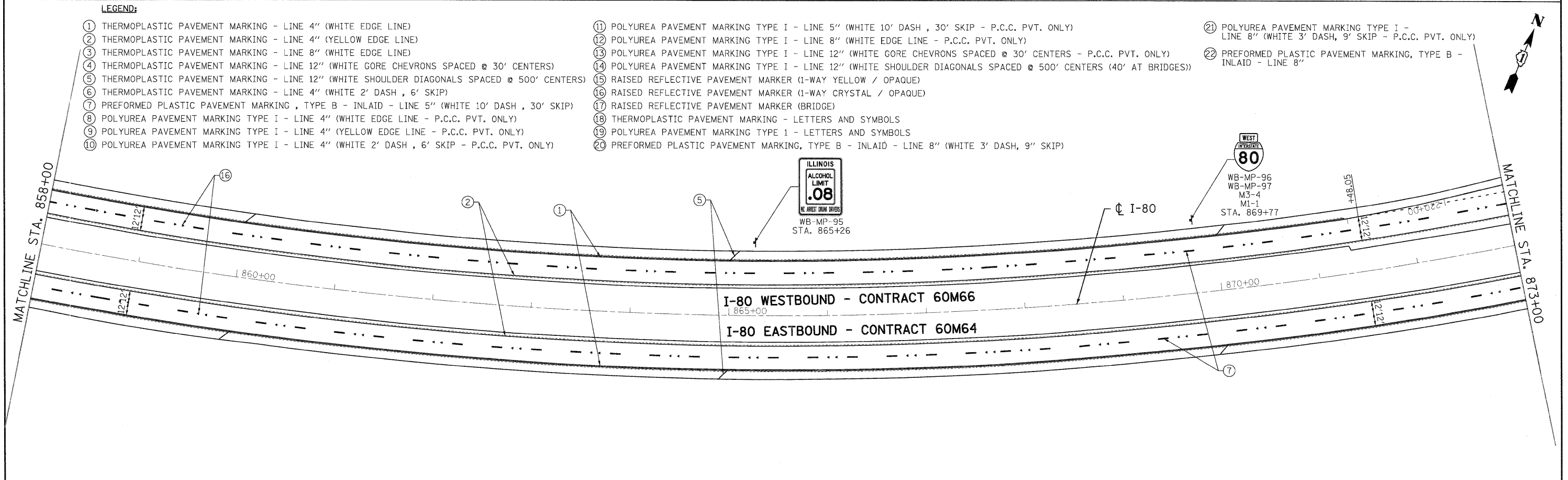
NOTES

1. SEE IDOT DISTRICT 1 DETAILS FOR TC-12 'MULTI-LANE FREEWAY PAVEMENT MARKING DETAILS' FOR PLACEMENT AND TYPE OF RAISED REFLECTIVE PAVEMENT MARKERS.
2. FOR PROPOSED PAVEMENT MARKINGS IN THE PCC SECTIONS, USE POLYUREA PAVEMENT MARKINGS ACCORDING TO DISTRICT 1 DETAIL TC-12.
3. REFER TO ROADWAY PLANS FOR LIMITS OF RESURFACING.
4. ALL EASTBOUND WORK IS IN CONTRACT 60M64 AND ALL WESTBOUND WORK IS IN CONTRACT 60M66.



LEGEND:

- | | | |
|---|--|---|
| <ul style="list-style-type: none"> ① THERMOPLASTIC PAVEMENT MARKING - LINE 4" (WHITE EDGE LINE) ② THERMOPLASTIC PAVEMENT MARKING - LINE 4" (YELLOW EDGE LINE) ③ THERMOPLASTIC PAVEMENT MARKING - LINE 8" (WHITE EDGE LINE) ④ THERMOPLASTIC PAVEMENT MARKING - LINE 12" (WHITE GORE CHEVRONS SPACED @ 30' CENTERS) ⑤ THERMOPLASTIC PAVEMENT MARKING - LINE 12" (WHITE SHOULDER DIAGONALS SPACED @ 500' CENTERS) ⑥ THERMOPLASTIC PAVEMENT MARKING - LINE 4" (WHITE 2' DASH, 6' SKIP) ⑦ PREFORMED PLASTIC PAVEMENT MARKING, TYPE B - INLAID - LINE 5" (WHITE 10' DASH, 30' SKIP) ⑧ POLYUREA PAVEMENT MARKING TYPE I - LINE 4" (WHITE EDGE LINE - P.C.C. PVT. ONLY) ⑨ POLYUREA PAVEMENT MARKING TYPE I - LINE 4" (YELLOW EDGE LINE - P.C.C. PVT. ONLY) ⑩ POLYUREA PAVEMENT MARKING TYPE I - LINE 4" (WHITE 2' DASH, 6' SKIP - P.C.C. PVT. ONLY) | <ul style="list-style-type: none"> ⑪ POLYUREA PAVEMENT MARKING TYPE I - LINE 5" (WHITE 10' DASH, 30' SKIP - P.C.C. PVT. ONLY) ⑫ POLYUREA PAVEMENT MARKING TYPE I - LINE 8" (WHITE EDGE LINE - P.C.C. PVT. ONLY) ⑬ POLYUREA PAVEMENT MARKING TYPE I - LINE 12" (WHITE GORE CHEVRONS SPACED @ 30' CENTERS - P.C.C. PVT. ONLY) ⑭ POLYUREA PAVEMENT MARKING TYPE I - LINE 12" (WHITE SHOULDER DIAGONALS SPACED @ 500' CENTERS (40' AT BRIDGES)) ⑮ RAISED REFLECTIVE PAVEMENT MARKER (1-WAY YELLOW / OPAQUE) ⑯ RAISED REFLECTIVE PAVEMENT MARKER (1-WAY CRYSTAL / OPAQUE) ⑰ RAISED REFLECTIVE PAVEMENT MARKER (BRIDGE) ⑱ THERMOPLASTIC PAVEMENT MARKING - LETTERS AND SYMBOLS ⑲ POLYUREA PAVEMENT MARKING TYPE 1 - LETTERS AND SYMBOLS ⑳ PREFORMED PLASTIC PAVEMENT MARKING, TYPE B - INLAID - LINE 8" (WHITE 3' DASH, 9' SKIP) | <ul style="list-style-type: none"> ⑳ POLYUREA PAVEMENT MARKING TYPE I - LINE 8" (WHITE 3' DASH, 9' SKIP - P.C.C. PVT. ONLY) ㉑ PREFORMED PLASTIC PAVEMENT MARKING, TYPE B - INLAID - LINE 8" |
|---|--|---|



USER NAME = tkoeppen(Rdwy_L1s1e)	DESIGNED - EJB	REVISED -	HBP Illinois Partners	STATE OF ILLINOIS DEPARTMENT OF TRANSPORTATION	PAVEMENT MARKING & SIGNING PLAN I-80 MAINLINE	F.A.I. RTE.	SECTION	COUNTY	TOTAL SHEETS	SHEET NO.
PLTJ CONFID= PDF(Large).plt	DRAWN - EJB	REVISED -				80	99 (2 & 3) RS-3	WILL	200	75
PLOT SCALE = 1:500	CHECKED - DTH	REVISED -				CONTRACT NO. 60M64				
PLOT DATE = 1/23/2011	DATE - 1/21/2011	REVISED -				FED. ROAD DIST. NO. 1 [ILLINOIS] FED. AID PROJECT				
FILE NAME = ...C160M64-sht-pmk-10.dgn			SCALE: 1"=50'			SHEET NO. 16 OF 18 SHEETS			STA. 843+00.00 TO STA. 873+00.00	