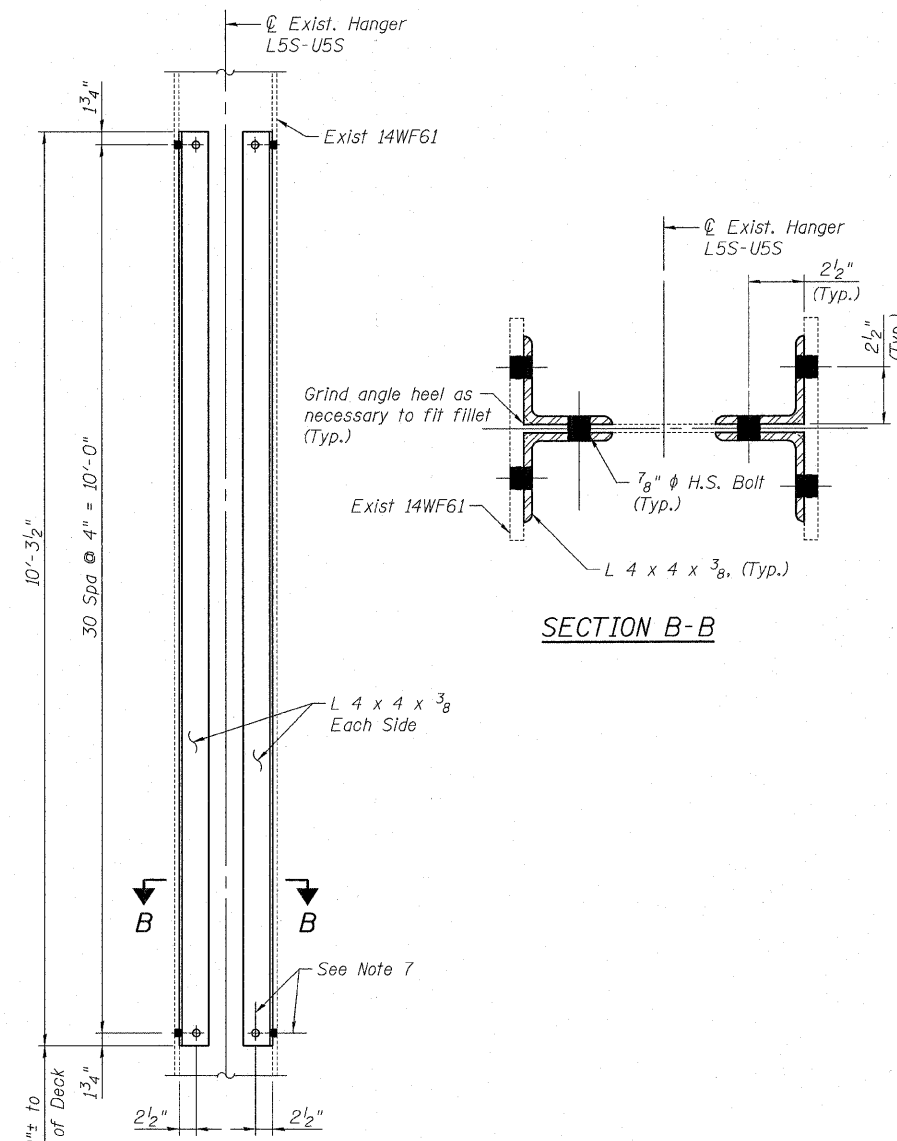
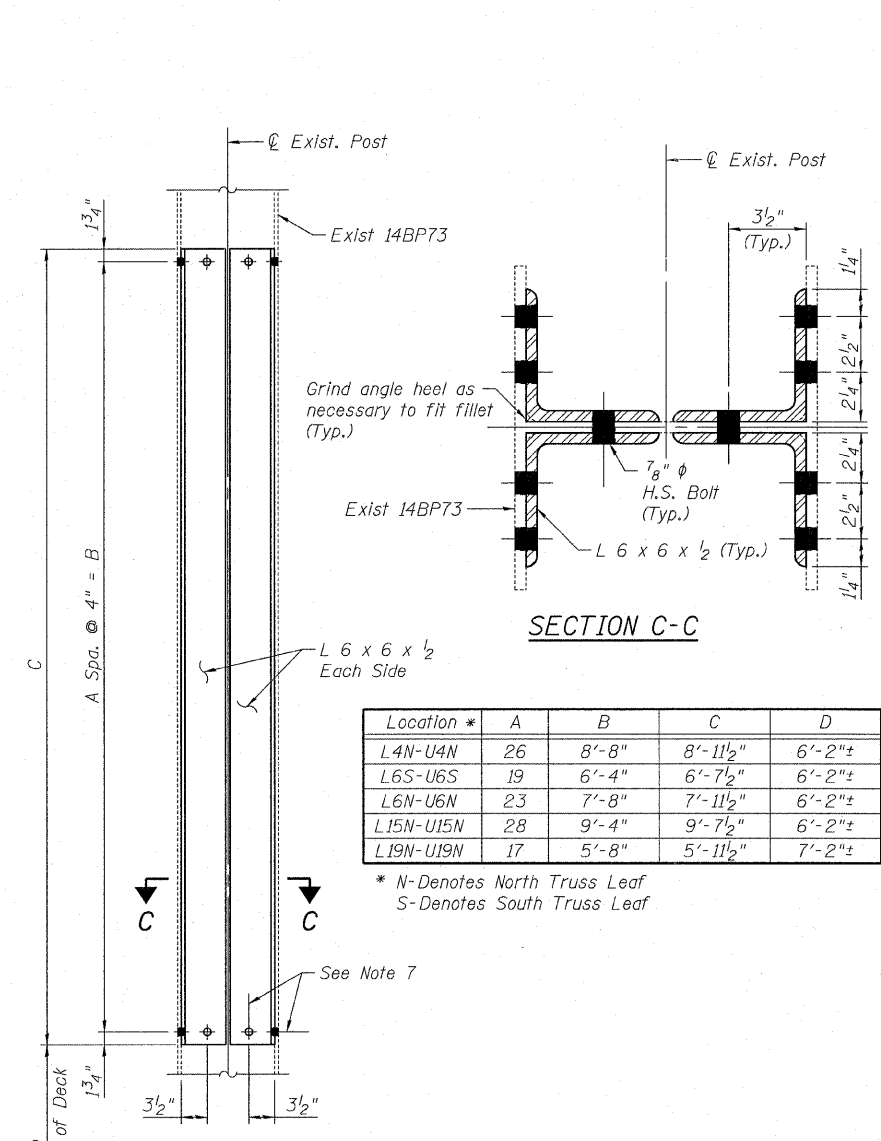


**DETAIL 1**  
**TRUSS HANGER/POST/DIAGONAL**  
**WEB AND FLANGE REPAIR**



**DETAIL 1**  
**TRUSS HANGER/POST/DIAGONAL**  
**WEB AND FLANGE REPAIR**



**DETAIL 1**  
**TRUSS HANGER/POST/DIAGONAL**  
**WEB AND FLANGE REPAIR**

Location #	A	B	C	D
L4N-U4N	26	8'-8"	8'-11 1/2"	6'-2"±
L6S-U6S	19	6'-4"	6'-7 1/2"	6'-2"±
L6N-U6N	23	7'-8"	7'-11 1/2"	6'-2"±
L15N-U15N	28	9'-4"	9'-7 1/2"	6'-2"±
L19N-U19N	17	5'-8"	5'-11 1/2"	7'-2"±

\* N-Denotes North Truss Leaf  
S-Denotes South Truss Leaf

- NOTES:**
- See Sheets S-8 to S-14 of 35 for locations of proposed repair details and notes.
  - All structural steel plates and shapes used in proposed repair details shall be AASHTO M270 Gr 36 (ASTM A36).
  - All fasteners shall be 7/8" dia. AASHTO M164 (ASTM A325) high strength bolts in 15/16" dia. standard size holes.
  - Contact surfaces at bolted parts shall have Class B coating as specified in AASHTO Standard Specifications for Highway Bridges.
  - Field drilling of existing members is required. The drilling cost shall be included with "Structural Steel Repair".
  - The repair plate and angle lengths shown are anticipated based on the latest field notes. Longer repair plates, angles may be required based upon field conditions.
  - 15/16" φ standard size holes in the truss member are to be field drilled using the repair plates and shapes as a template unless otherwise noted.

DESIGNED - MEA	REVISED -
DRAWN - LK	REVISED -
CHECKED - MRI	REVISED -
DATE - 2/8/2011	REVISED -



**STATE OF ILLINOIS**  
**DEPARTMENT OF TRANSPORTATION**

**STEEL REPAIR DETAILS 1**  
**EASTBOUND I-80 OVER DES PLAINES RIVER**  
**STRUCTURE NO. 099-0056**

F.A.I. RTE. 80	SECTION 99 (2&3) RS-3	COUNTY WILL	TOTAL SHEETS 200	SHEET NO. 122
FED. ROAD DIST. NO. 1 ILLINOIS FED. AID PROJECT			CONTRACT NO. 60M64	