

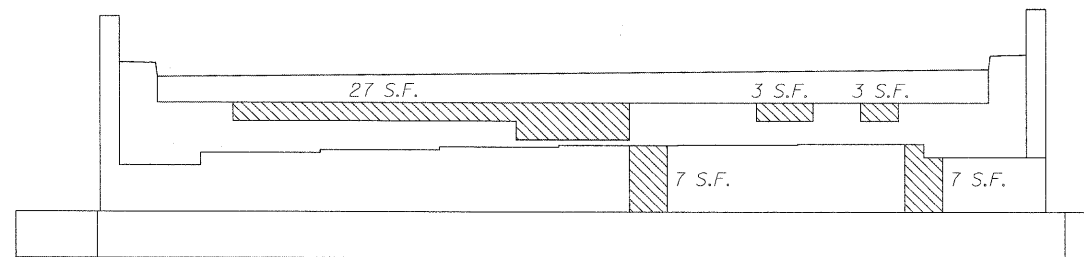
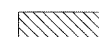



WEST ABUTMENT

-  Structural Repair of Concrete (Depth < 5") = 12 Sq. Ft.
-  Structural Repair of Concrete (Depth > 5") = 12 Sq. Ft.



EAST ABUTMENT

-  Structural Repair of Concrete (Depth < 5") = 47 Sq. Ft.
-  Structural Repair of Concrete (Depth > 5") = 0 Sq. Ft.

USER NAME = m_julier	DESIGNED - DF	REVISED -
PLOT SCALE = NTS	DRAWN - LAM	REVISED -
PLOT DATE = 1/20/2011 12:58:43 PM	CHECKED - BLU	REVISED -
	DATE - 01/21/2011	REVISED -



STATE OF ILLINOIS
DEPARTMENT OF TRANSPORTATION

ABUTMENT REPAIR DETAILS
EASTBOUND I-80 OVER DES PLAINES RIVER
STRUCTURE NO. 099-0056

SHEET NO. S-22 OF S-35 SHEETS

F.A.I. RTE.	SECTION	COUNTY	TOTAL SHEETS	SHEET NO.
80	99I2&3IRS-3	WILL	200	124
FED. ROAD DIST. NO.			ILLINOIS FED. AID PROJECT	
			CONTRACT NO. 60M64	