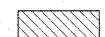

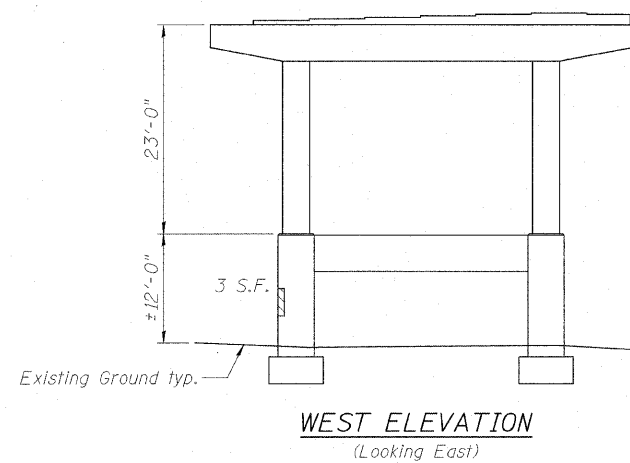


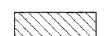

PIER 23

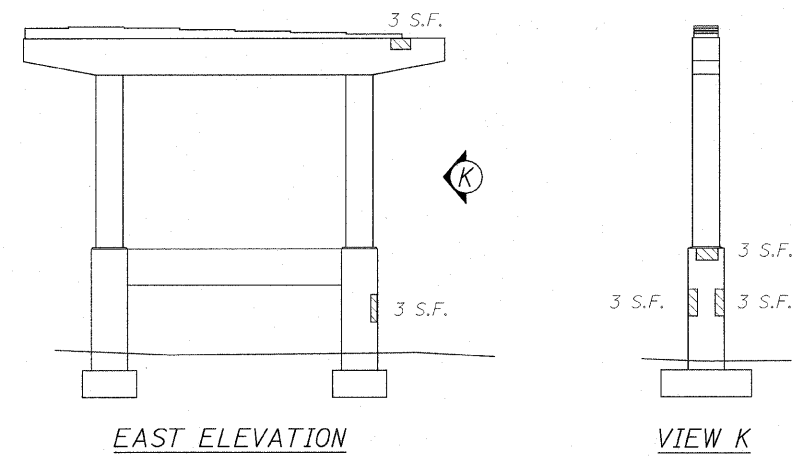
 Structural Repair of Concrete (Depth < 5") = 641 Sq. Ft.
 Structural Repair of Concrete (Depth > 5") = 129 Sq. Ft.

NOTES: See Sheet S-18 for Temporary Shoring and Cribbing, Special locations.



PIER 24

 Structural Repair of Concrete (Depth < 5") = 18 Sq. Ft.
 Structural Repair of Concrete (Depth > 5") = 0 Sq. Ft.



USER NAME = Inueller	DESIGNED - JC	REVISED -
PLOT SCALE = NTS	DRAWN - JC	REVISED -
PLOT DATE = 2/9/2011 5:43:32 PM	CHECKED - DF	REVISED -
	DATE - 01/21/2011	REVISED -



STATE OF ILLINOIS
DEPARTMENT OF TRANSPORTATION

PIER REPAIR DETAILS 12
EASTBOUND FAI-80 OVER DES PLAINES RIVER
STRUCTURE NO. 099-0056

SHEET NO. S-34 OF S-35 SHEETS

F.A.I. RTE.	SECTION	COUNTY	TOTAL SHEETS	SHEET NO.
80	99(2&3)RS-3	WILL	200	141
FED. ROAD DIST. NO.			ILLINOIS FED. AID PROJECT	
			CONTRACT NO. 60M64	