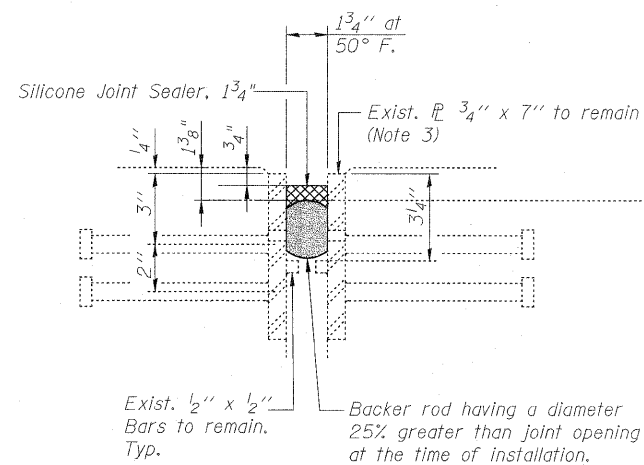


PLAN

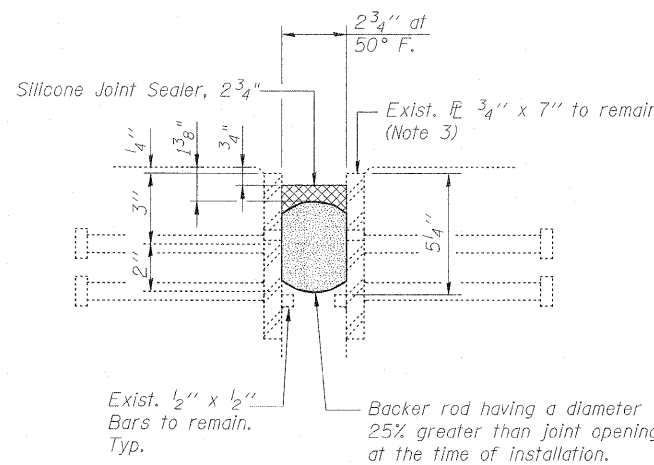
BILL OF MATERIAL

ITEM	UNIT	TOTAL
Deck Slab Repair (Full Depth, Type II)	Sq. Yd.	38
Deck Slab Repair (Partial)	Sq. Yd.	193
Silicone Joint Sealer, 1"	Foot	63
Silicone Joint Sealer, 1 3/4"	Foot	126
Silicone Joint Sealer, 2 3/4"	Foot	63

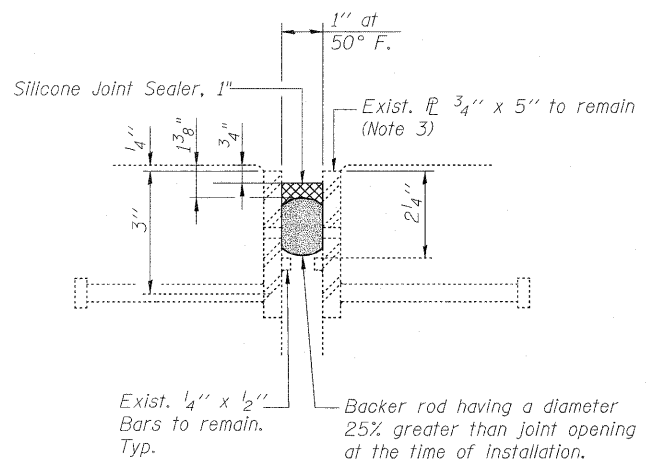
LEGEND:



SECTION A-A
(At Abutments)

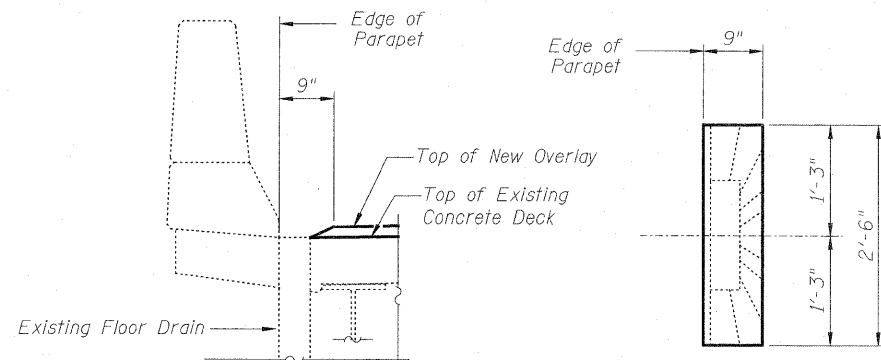


SECTION B-B
(At Pier 3)

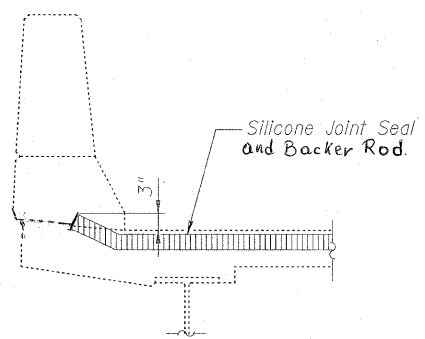


SECTION C-C
(At Pier 4)

DECK EXPANSION JOINT DETAILS



SECTION AT FLOOR DRAIN
OVERLAY TREATMENT AT FLOOR DRAIN



TYPICAL END OF SEAL TREATMENT

Notes:

- See General Note 3 on Sheet S1 of S6.
- Removal and disposal of the existing joint fillers and neoprene seals will be included with the cost of Silicone Joint Sealer, of the size specified.
- Existing plates to be cleaned prior to installation of backer rod. Cost included with Silicone Joint Sealer, of the size specified.
- Deck Slab Repair concrete shall be placed up to top of existing waterproofing membrane system. Cost included with Deck Slab Repair, of the type specified.
- The Contractor shall grind off any existing concrete patches flush with the existing waterproofing membrane system. Cost included with Hot-Mix Asphalt Surface Removal (Deck).