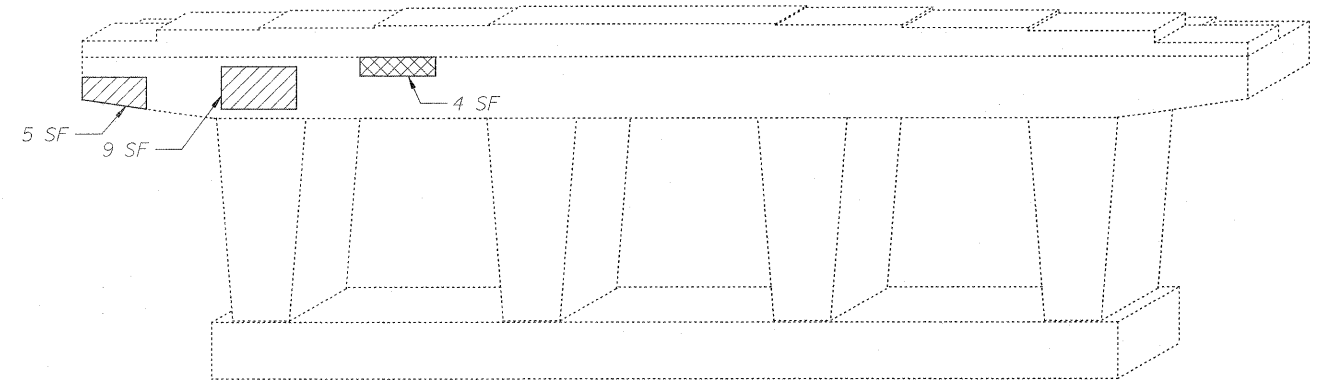
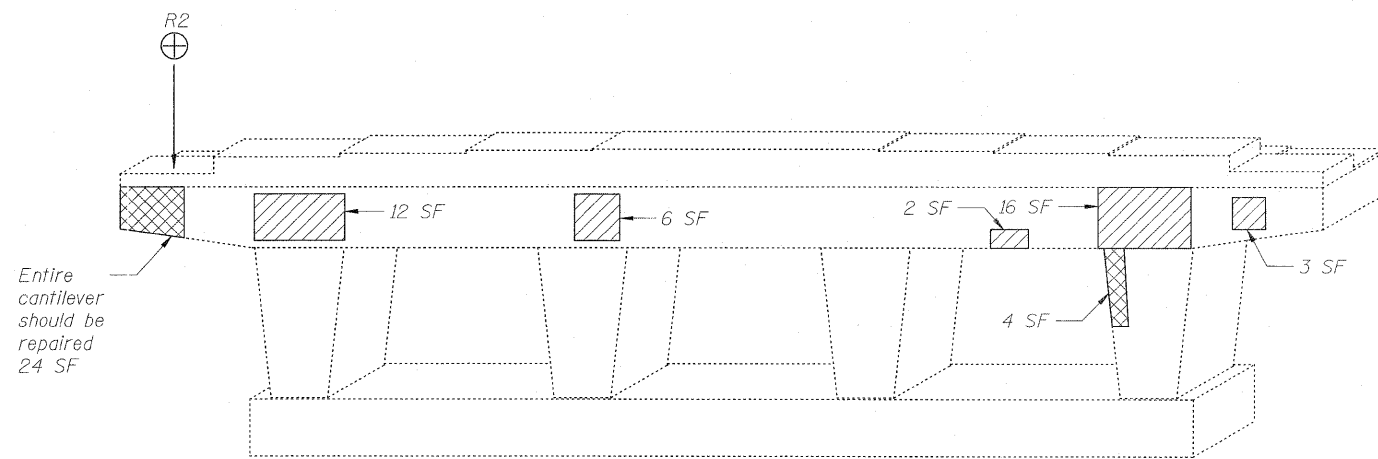


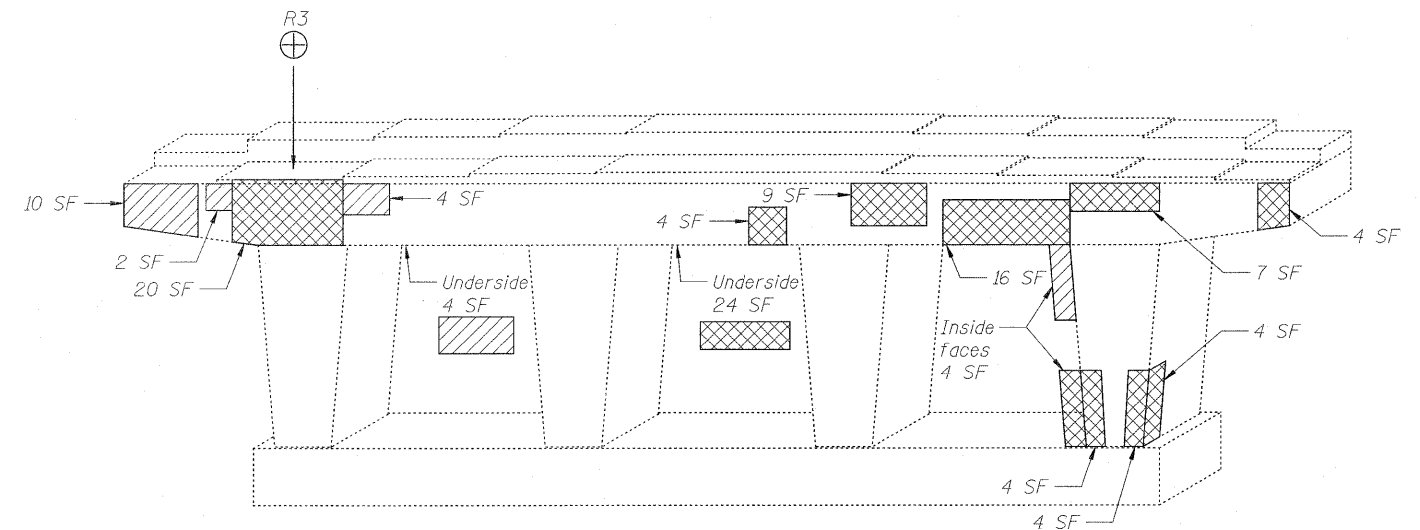
PIER 3
EAST FACE



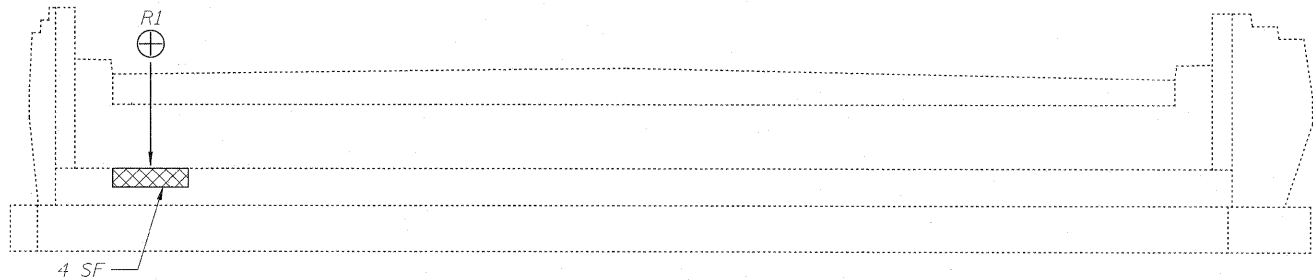
PIER 4
EAST FACE



PIER 3
WEST FACE



PIER 4
WEST FACE



SOUTHWEST ABUTMENT
Looking West

INTERIOR GIRDER REACTION TABLE				
		R1	R2	R3
R ₂	(k)	21.9	20.7	51.3
R ₄	(k)	38.0	33.1	39.2
Imp.	(k)	11.4	9.9	8.8
R Total	(k)	71.3	63.7	99.3

BILL OF MATERIAL

ITEM	UNIT	TOTAL
Structural Repair of Concrete (Depth < 5")	Sq. Ft.	87
Structural Repair of Concrete (Depth > 5")	Sq. Ft.	214
Temporary Shoring and Cribbing	Each	3

LEGEND:

Structural Repair of Concrete (Depth < 5")

Structural Repair of Concrete (Depth > 5")

Temporary Shoring and Cribbing

Note:
See the Special Provision "Temporary Shoring and Cribbing" for design, installation, and removal of the temporary shoring and cribbing system. Approximate beam reactions are given in Interior Girder Reaction Table at the locations shown.

USER NAME = a:\org\cog\l\rdwy.Lts\le	DESIGNED - A.Y./L.C.	REVISED -
PLOT CONFIG = PDF(1-80, TopoGrey, Large).p	DRAWN - L.C./A.Y.	REVISED -
PLOT SCALE = 1:5	CHECKED - A.Y./R.L.D.	REVISED -
PLOT DATE = 2/8/2011	DATE - 01/21/2011	REVISED -



STATE OF ILLINOIS
DEPARTMENT OF TRANSPORTATION

ABUTMENT AND PIER REPAIRS
EASTBOUND I-80 OVER IL ROUTE 53 (CHICAGO STREET)
SN 099-0059

SCALE: SHEET S4 OF S6 STA. TO STA.

F.A.I. RTE.	SECTION	COUNTY	TOTAL SHEETS	SHEET NO.
80	99 (2&3) RS-3	WILL	200	146
FED. ROAD DIST. NO. 1 ILLINOIS FED. AID PROJECT			CONTRACT NO. 60M64	