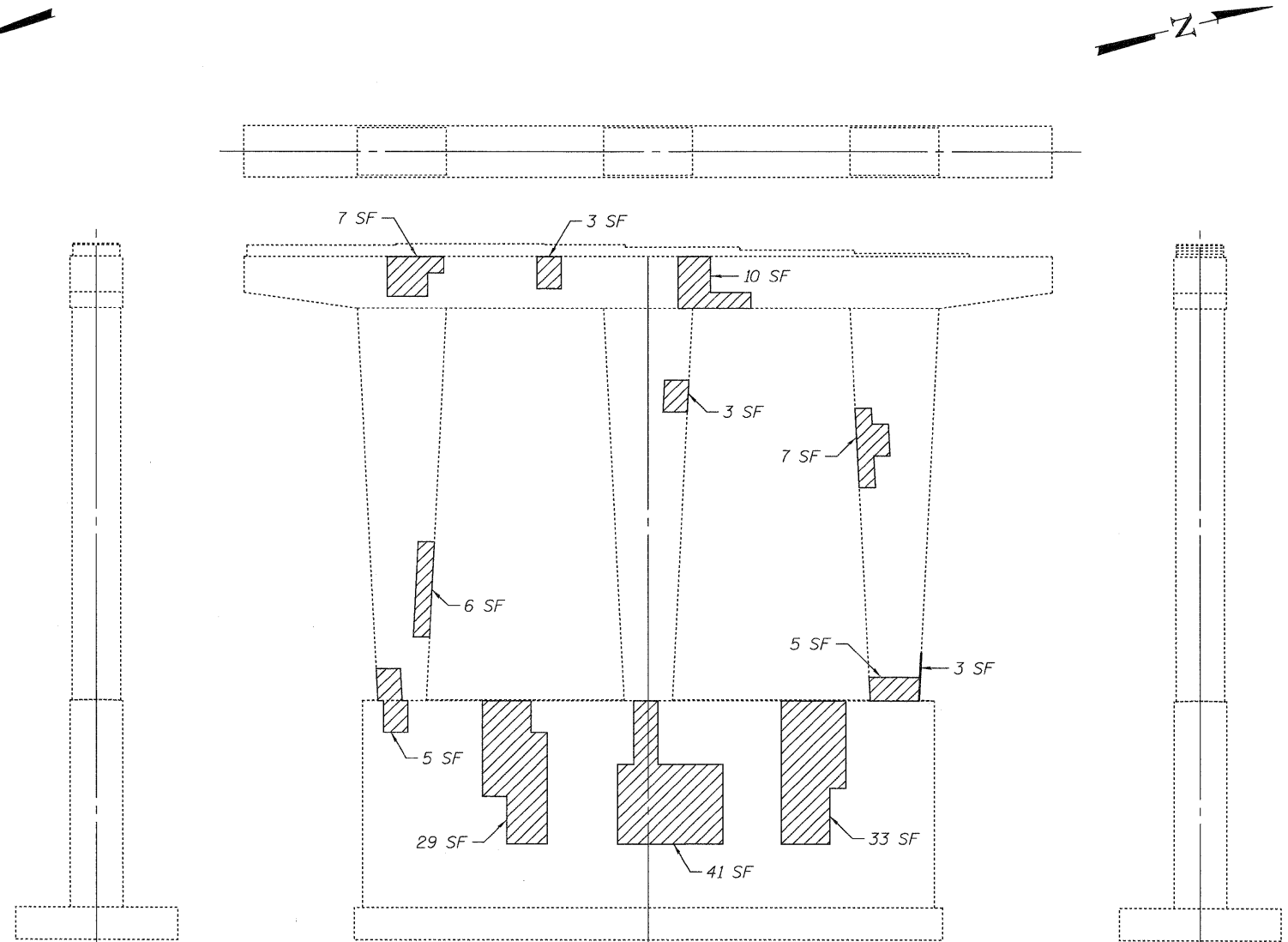


**WEST ELEVATION**  
Looking East



**EAST ELEVATION**  
Looking West

**SOUTH ELEVATION**  
Looking North

**NORTH ELEVATION**  
Looking South

**BILL OF MATERIAL**

ITEM	UNIT	TOTAL
Structural Repair Of Concrete (Depth Greater Than 5 Inches)	Sq.Ft.	14
Structural Repair Of Concrete (Depth Equal To Or Less Than 5 Inches)	Sq.Ft.	275

**LEGEND:**

Spalled or unsound concrete - SF indicates Square Feet.

**NOTES:**

1. Areas of proposed pier repairs are estimated. Actual type, location and dimensions of pier repairs are to be determined by the Engineer during construction.

DESIGNED - PCA	REVISED -
DRAWN - LK	REVISED -
CHECKED - MEA	REVISED -
DATE - 01/21/2011	REVISED -



**STATE OF ILLINOIS**  
**DEPARTMENT OF TRANSPORTATION**

**PIER 3 REPAIRS**  
**EASTBOUND FAI-80 OVER HICKORY CREEK**  
**STRUCTURE NO. 099-0062**

F.A.I. RTE.	SECTION	COUNTY	TOTAL SHEETS	SHEET NO.
80	99 (2&3) RS-3	WILL	200	168
CONTRACT NO. 60M64				