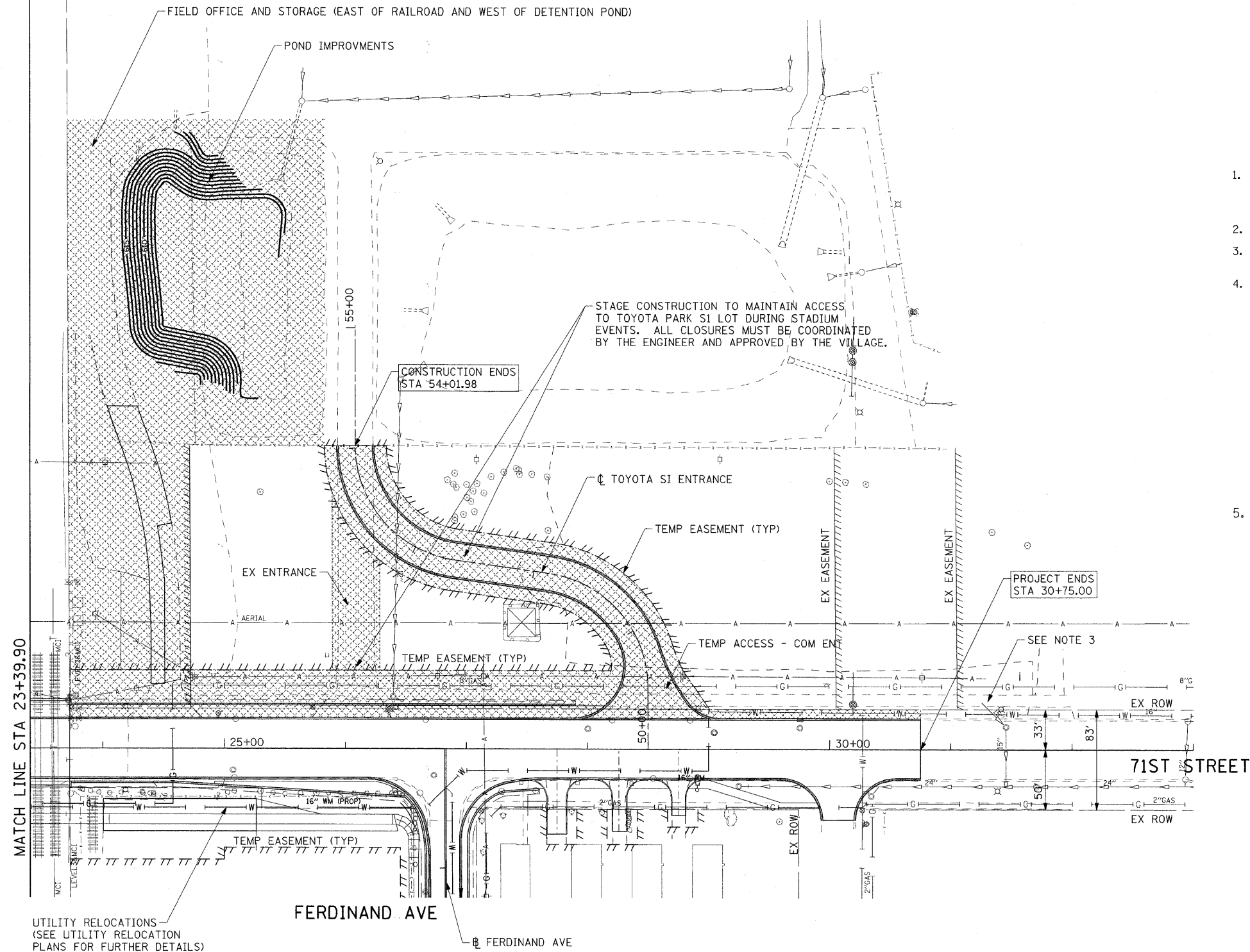
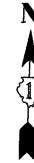


**LEGEND:**

 CONSTRUCTION WORK ZONE



**PROJECT COMMITMENTS FOR TOYOTA PARK AND COM ED.**

1. ACCESS MUST BE MAINTAINED TO THE TOYOTA PARK S1 PARKING LOT DURING ALL STADIUM EVENTS. CONSTRUCTION MUST BE STAGED TO NOT INTERFERE WITH STADIUM OPERATIONS. ANY TEMPORARY CLOSURES, OBSTRUCTIONS OR OTHER DISRUPTIONS MUST BE COORDINATED AND APPROVED BY THE ENGINEER IN ADVANCE OF THE WORK.
2. REFER TO THE SPECIAL PROVISIONS FOR ADDITIONAL REQUIREMENTS FOR TOYOTA PARK.
3. MAINTAIN PEDESTRIAN ACCESS ALONG THE NORTHSIDE OF 71ST STREET BETWEEN BELOIT AVENUE AND HARLEM AVENUE THROUGHOUT THE DURATION OF THE PROJECT.
4. THE CONTRACTOR MUST FOLLOW ALL OVERHEAD ELECTRICAL LINE CLEARANCE REQUIREMENTS AS STATED IN THE OSHA STANDARDS. COMED HAS BOTH DISTRIBUTION AND TRANSMISSION LINES WITHIN THE PROJECT LIMITS. IN THE EVENT THE CONTRACTOR REQUIRES AN ELECTRICAL OUTAGE, THE CONTRACTOR MUST PUT IN A REQUEST TO TIM COSLET WITH COMED AT 815-724-5010 A MINIMUM OF 8 WEEKS IN ADVANCE OF THE OUTAGE DAY(S).

**STAGING NOTES:**

5. ALL WORK IN THIS STAGE SHALL BE DONE ACCORDING TO THE DETAILS IN THE PLANS AND USING THE APPROPRIATE HIGHWAY STANDARDS.

SUGGESTED TOYOTA PARK CONSTRUCTION AND TRAFFIC CONTROL

FILE NAME: P:\A60155677\0800\_CAD\0801\_Drawing\Sheet\Sheet\Civil\620155677-staging-06.dgn



USER NAME = manuj	DESIGNED - TJW	REVISED -
PLOT SCALE = 50,000' / IN.	DRAWN - JWM	REVISED -
PLOT DATE = 1/20/2011	CHECKED - TJW	REVISED -
	DATE - JANUARY 7, 2010	REVISED -

**STATE OF ILLINOIS  
DEPARTMENT OF TRANSPORTATION**

**WORK ZONE AND STAGING REQUIREMENTS PLAN -  
TOYOTA PARK**

SCALE: 1"=50' SHEET NO. 4 OF 10 SHEETS STA 25+00.00 TO STA 30+75.00

F.A.U. RTE.	SECTION	COUNTY	TOTAL SHEETS	SHEET NO.
1537	06-00050-00-GS	COOK	209	37
CONTRACT NO. 63556				
FED. ROAD DIST. NO. 1 ILLINOIS FED. AID PROJECT CRE-90031709				