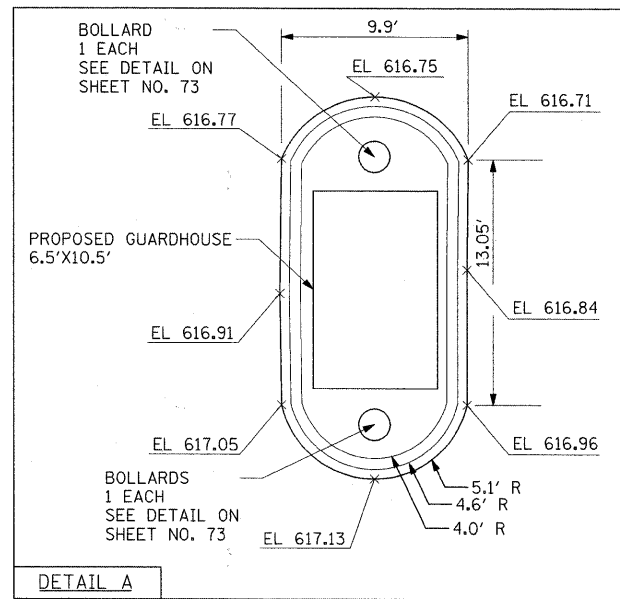


PR CURVE PEPSI-1

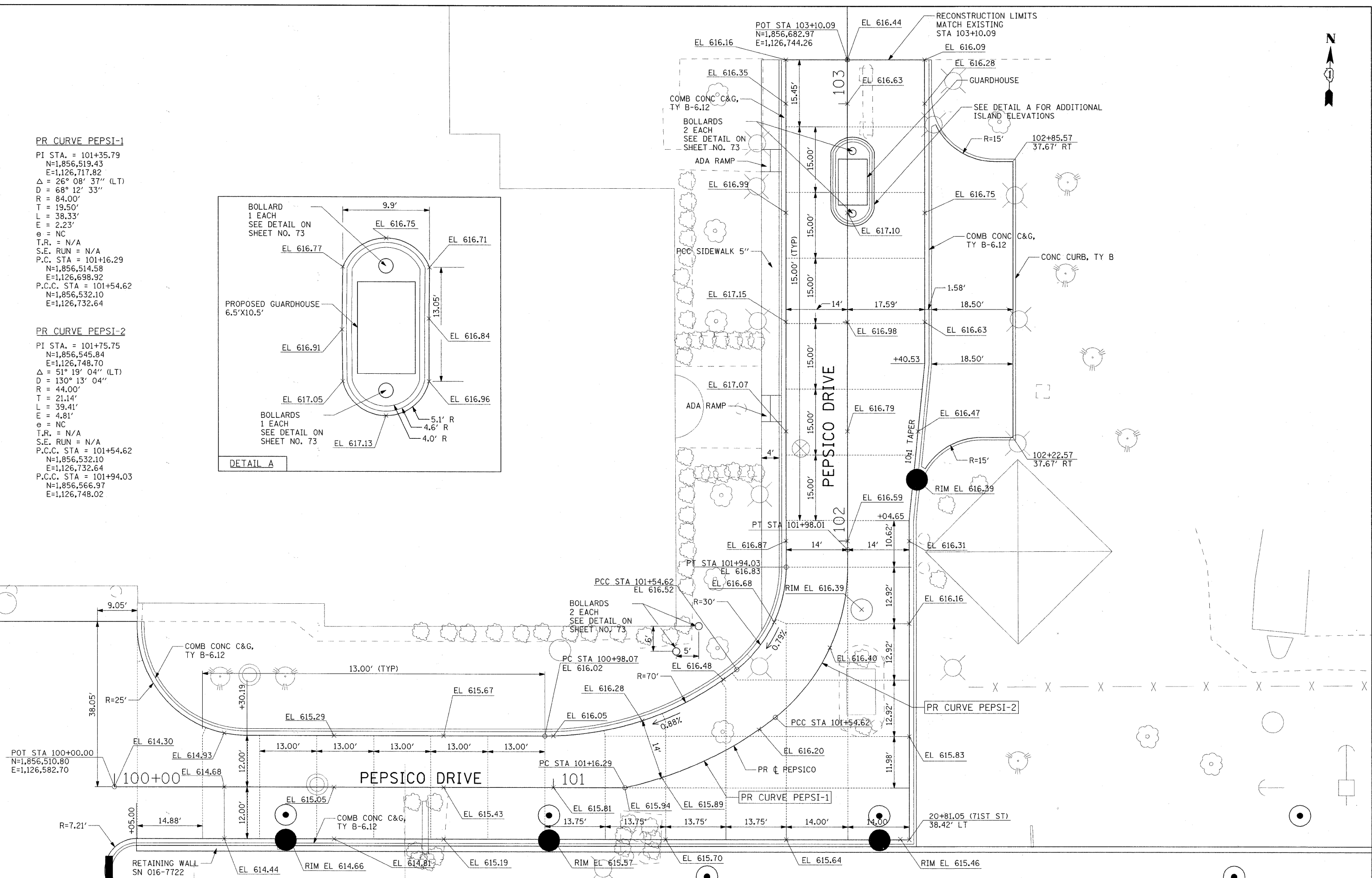
PI STA. = 101+35.79
N=1,856,519.43
E=1,126,717.82
Δ = 26° 08' 37" (LT)
D = 68° 12' 33"
R = 84.00'
T = 19.50'
L = 38.33'
E = 2.23'
e = NC
T.R. = N/A
S.E. RUN = N/A
P.C. STA = 101+16.29
N=1,856,514.58
E=1,126,698.92
P.C.C. STA = 101+54.62
N=1,856,532.10
E=1,126,732.64

PR CURVE PEPSI-2

PI STA. = 101+75.75
N=1,856,545.84
E=1,126,748.70
Δ = 51° 19' 04" (LT)
D = 130° 13' 04"
R = 44.00'
T = 21.14'
L = 39.41'
E = 4.81'
e = NC
T.R. = N/A
S.E. RUN = N/A
P.C.C. STA = 101+54.62
N=1,856,532.10
E=1,126,732.64
P.C.C. STA = 101+94.03
N=1,856,566.97
E=1,126,748.02



FILE NAME = P:\60155077\0602_CAC\021_Drawing\Sheets\Civil\62185877-ait-intersec-01.dgn



USER NAME = merrj	DESIGNED - KK	REVISED -
PLOT SCALE = 10.000' / IN.	DRAWN - ST	REVISED -
PLOT DATE = 1/20/2011	CHECKED - TJW	REVISED -
	DATE - JANUARY 7, 2010	REVISED -

**STATE OF ILLINOIS
DEPARTMENT OF TRANSPORTATION**

**INTERSECTION DETAIL PLAN
PEPSICO DRIVEWAY**

SCALE: 1"=10' SHEET NO. 1 OF 1 SHEETS STA 58+60.00 TO STA 60+00.00

F.A.U. RTE.	SECTION	COUNTY	TOTAL SHEETS	SHEET NO.
1537	06-00050-00-G5	COOK	209	66
FED. ROAD DIST. NO. 1		ILLINOIS		FED. AID PROJECT CRE-90031709
CONTRACT NO. 63556				