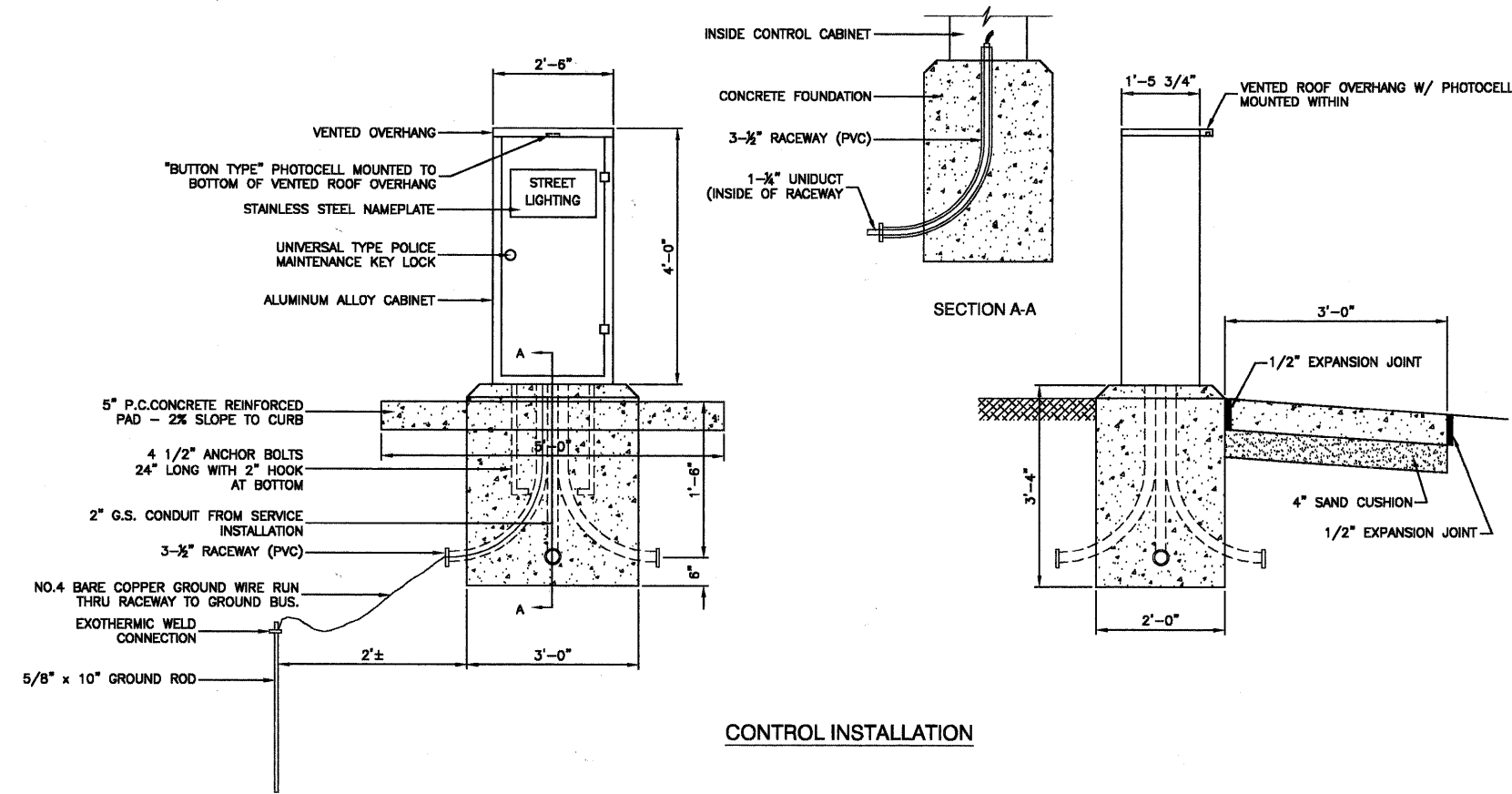


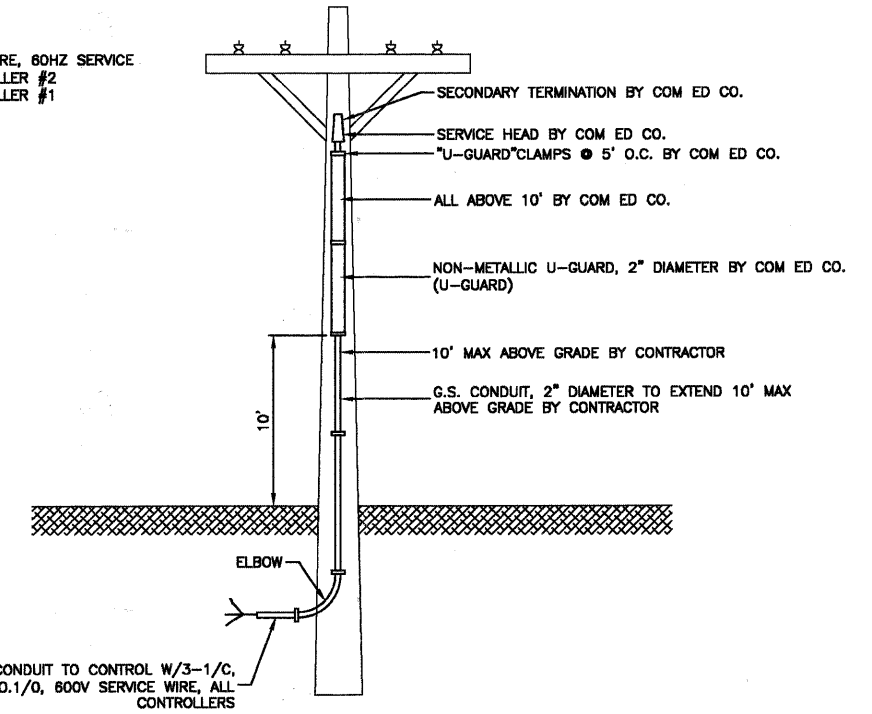
SECTION 24, TOWNSHIP 38, RANGE 12  
SECTION 25, TOWNSHIP 38, RANGE 12

DATE	
BY	
REVISION	
NO.	
DATE	
BY	
REVISION	
NO.	
DATE	
BY	
REVISION	
NO.	



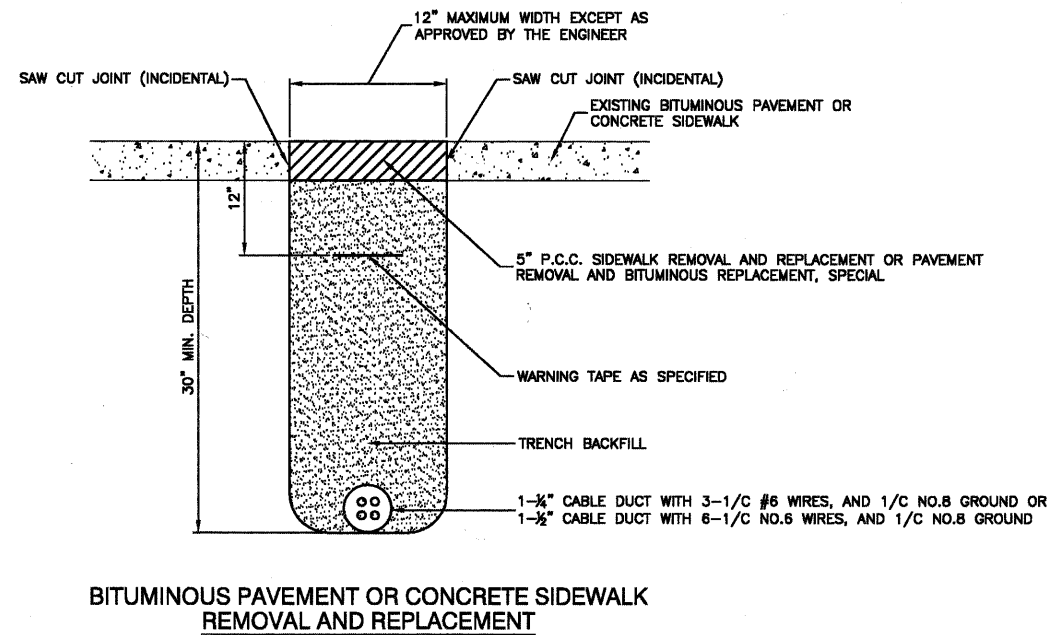
CONTROL INSTALLATION

240/480 VOLT, 1Ø, 3 WIRE, 60HZ SERVICE  
9.15 KVA LOAD, CONTROLLER #2  
4.00 KVA LOAD, CONTROLLER #1

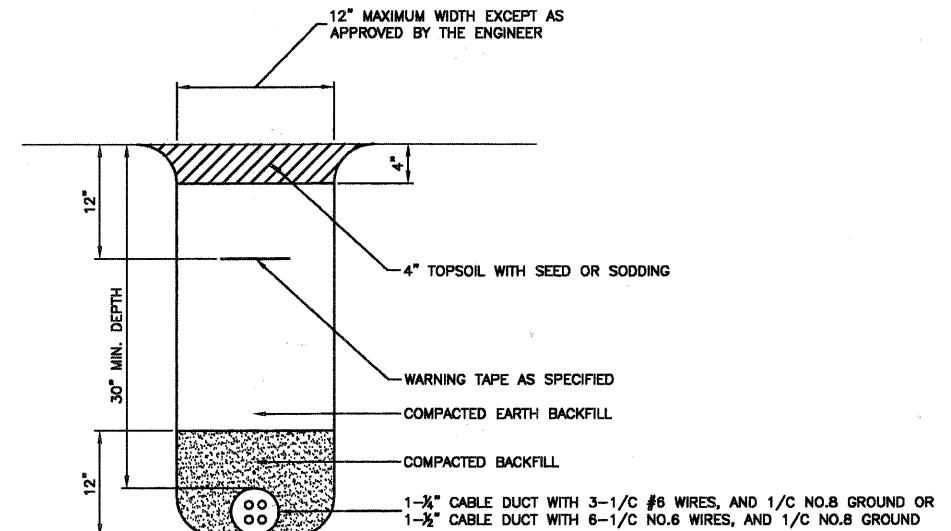


SERVICE CONNECTION FOR ALL CONTROLLERS

DATE	
BY	
REVISION	
NO.	
DATE	
BY	
REVISION	
NO.	
DATE	
BY	
REVISION	
NO.	



BITUMINOUS PAVEMENT OR CONCRETE SIDEWALK  
REMOVAL AND REPLACEMENT



TRENCH DETAIL

FILE NAME = 06050-LIGHT-05 - P04

USER NAME =	DESIGNED -- PAP	REVISED --
	CHECKED -- PKB	REVISED --
PLOT SCALE = N/A	DRAWN -- MJD	REVISED --
PLOT DATE = 12/23/10	CHECKED -- AG	REVISED --

STATE OF ILLINOIS  
DEPARTMENT OF TRANSPORTATION

71ST STREET	
STREET LIGHTING - EXISTING CONTROLLER & SERVICE/ TRENCH DETAILS	
SCALE: N/A	SHEET NO. 86 OF 209 SHEETS
STA. N/A	TO STA. N/A

F.A.U. RTE.	SECTION	COUNTY	TOTAL SHEETS	SHEET NO.
1537	06-00050-00-GS	COOK	209	86
CONTRACT NO. 63556				
FED. ROAD DIST. NO. 1 ILLINOIS FED. AID PROJECT CRE-9003(709)				