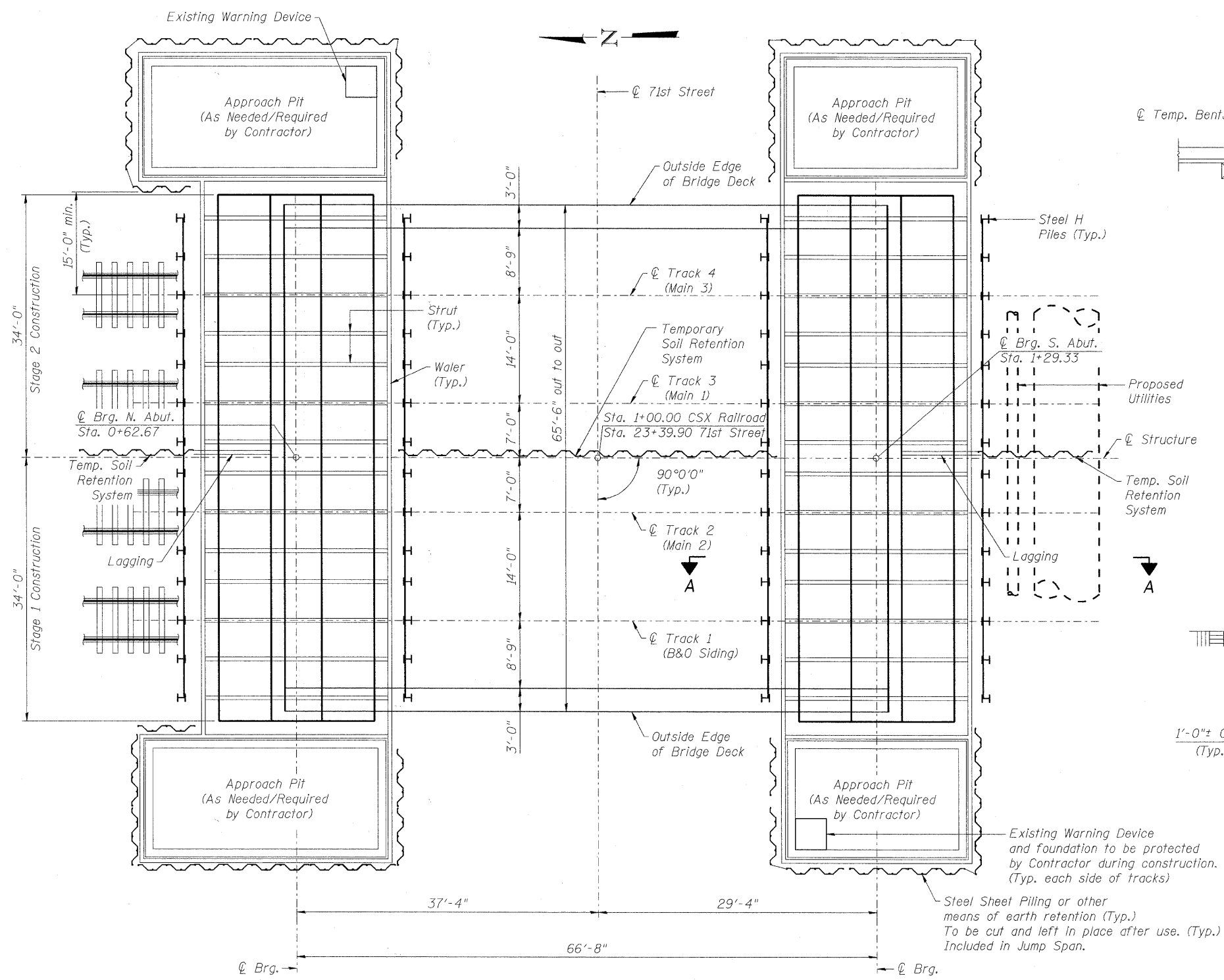
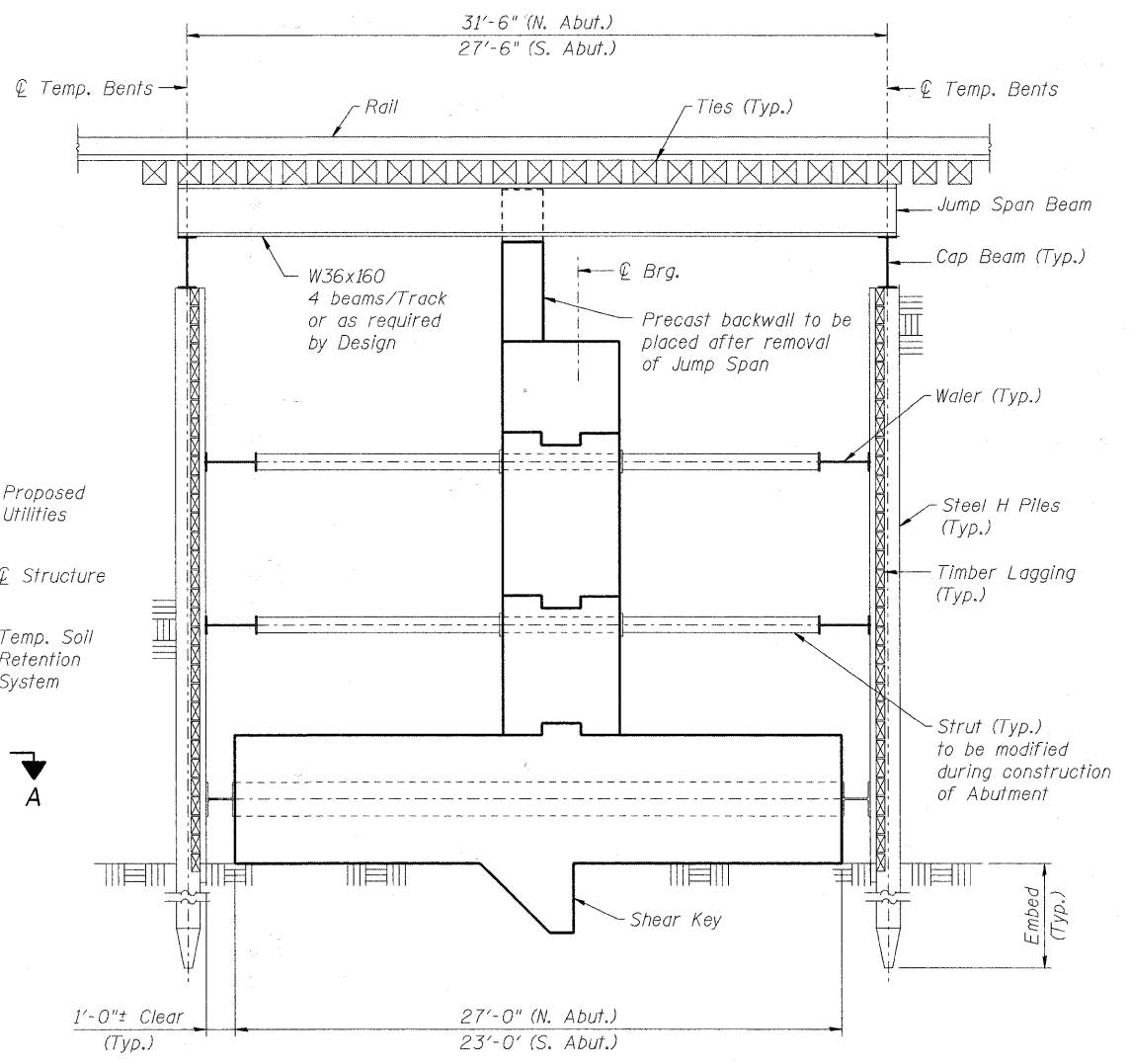


FILE NAME = P:\6015877\0200\_CAD\001\_Drawings\Sheets\Structural\016-7721\DDT1.shd16.Staging-Ldgn



**PLAN**  
(Jump span and cap beam not shown for clarity)  
N.T.S.



**SECTION A-A**  
N.T.S.

**NOTES**

1. The Contractor must coordinate with the railroad authority to work around the train schedule to minimize the impact on train operations.
2. The Contractor may install the steel H Piles and earth retention system between normal train operations. The Contractor must stop work and clear the active tracks by at least 10 feet from center line of tracks prior to train passing.
3. The Contractor will be given 48 hours maximum for the interruption of train operations in each phase of construction (2 windows of 24 hrs. each) for removing tracks, installing bridge and restoring train operation. The Contractor shall preassemble the superstructure near the bridge site and install the superstructure to its final position to expedite construction.
4. Only Conceptual Layout is shown for the Jump span. The final design and details for the jump spans and sheet piling to be performed by the Contractor.
5. For Suggested Construction Sequence, see next sheet.
6. Approach pit or other access structure included in Jump Span Unit.



USER NAME = dabeszid	DESIGNED - BMR	REVISED -
PLOT SCALE = 0:1.2000 ' / IN.	DRAWN - JH	REVISED -
PLOT DATE = 1/21/2011	CHECKED - DD	REVISED -
	DATE - 11/23/2010	REVISED -

**STATE OF ILLINOIS  
DEPARTMENT OF TRANSPORTATION**

**TEMPORARY STAGING I  
STRUCTURE NO. 016-7721**

F.A.U. RTE. 1537	SECTION 06-00050-00-6S	COUNTY COOK	TOTAL SHEETS 209	SHEET NO. 110
SCALE: SHEET NO. 16 OF 61 SHEETS		STA. TO STA.	CONTRACT NO. 63556	
FED. ROAD DIST. NO. 1 ILLINOIS FED. AID PROJECT CRE-9003709				