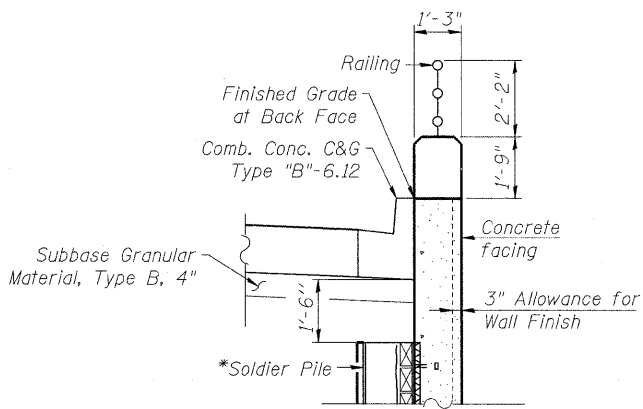


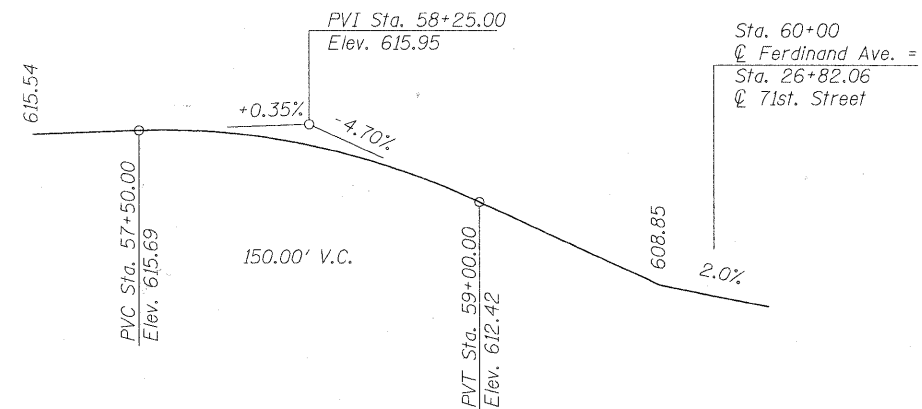
TYPICAL WALL SECTION

*See Soldier Pile Plan & Elevation Sheets for pile size, spacing, length and top and bottom elevations.



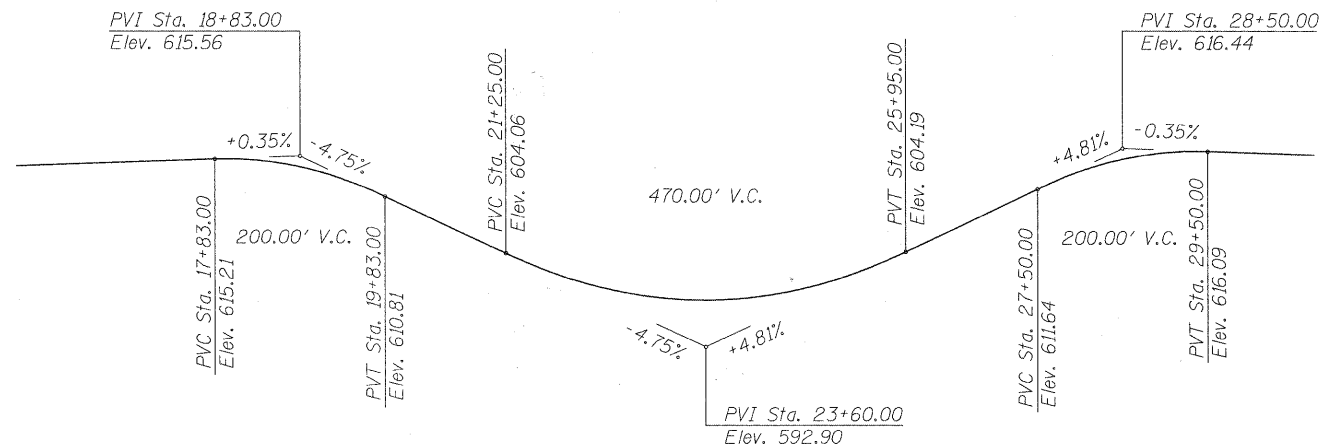
DETAIL A

Wall Section by PepsiCo Driveway
 Str. No. 016-7722 (Sta. 19+05 to Sta. 20+83)



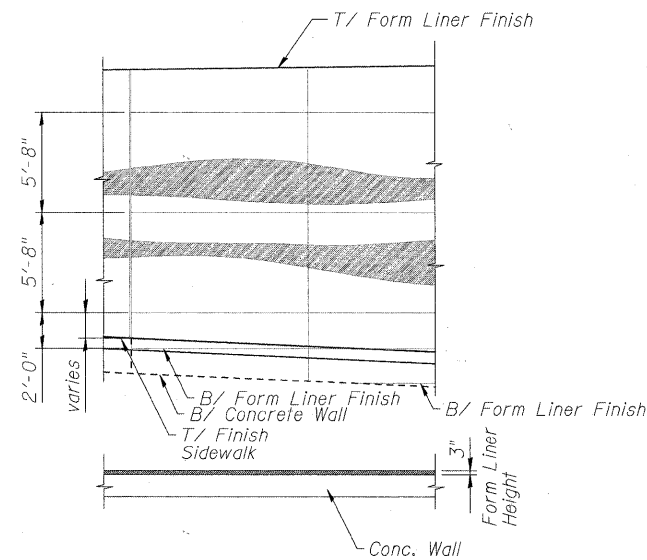
PROFILE GRADE

(along proposed Ferdinand Ave.)



PROFILE GRADE

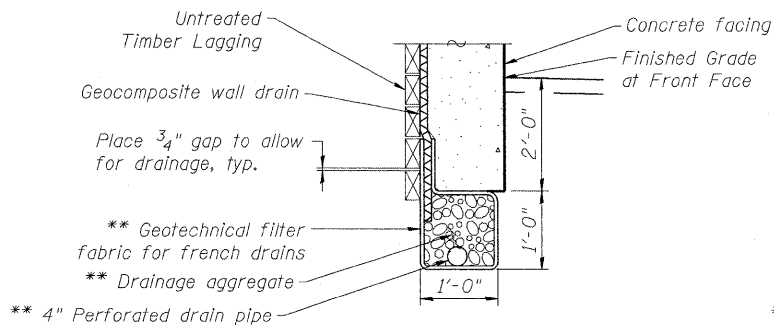
(along proposed 71st. Street)



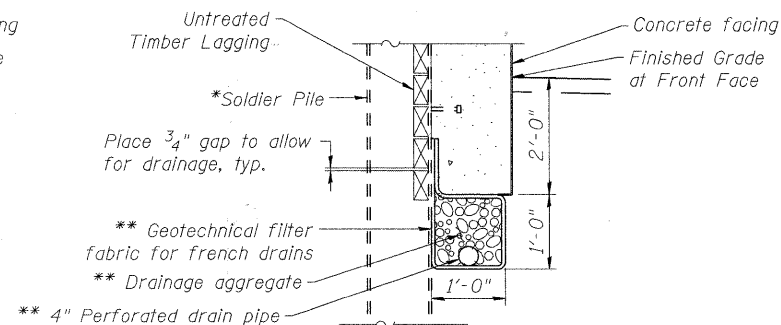
TYPICAL DETAIL FOR FORM LINER

NOTE:

The Contractor is responsible for the design and performance of the lagging using no less than a 3 in. normal rough-sawn thickness and timber with a minimum allowable bending stress of 1000 psi.



BETWEEN SOLDIER PILES



AT SOLDIER PILES

UNDERDRAIN DETAIL FOR SOLDIER PILE WALLS

** Included in the cost of Pipe Underdrains for Structures.

Note: See Sheet No. 52 of 61 for Railing Details.

FILE NAME = P:\60155877\002.CAD\001.Drawings\Sheets\Structure\016-7722\001-sh20-Typical Wall Section.dgn



USER NAME = dabezicd	DESIGNED - DD	REVISED -
PLOT SCALE = 0:1/2000 1/4" = 1'-0"	DRAWN - DD	REVISED -
PLOT DATE = 1/21/2011	CHECKED - EJO	REVISED -
	DATE - 10/11/2010	REVISED -

**STATE OF ILLINOIS
 DEPARTMENT OF TRANSPORTATION**

TYPICAL WALL SECTION

F.A.U. RTE. 1537	SECTION 06-00050-00-GS	COUNTY COOK	TOTAL SHEETS 209	SHEET NO. 114
CONTRACT NO. 63556				
ILLINOIS FED. AID PROJECT				

SCALE: SHEET NO. 20 OF 61 SHEETS STA. TO STA.