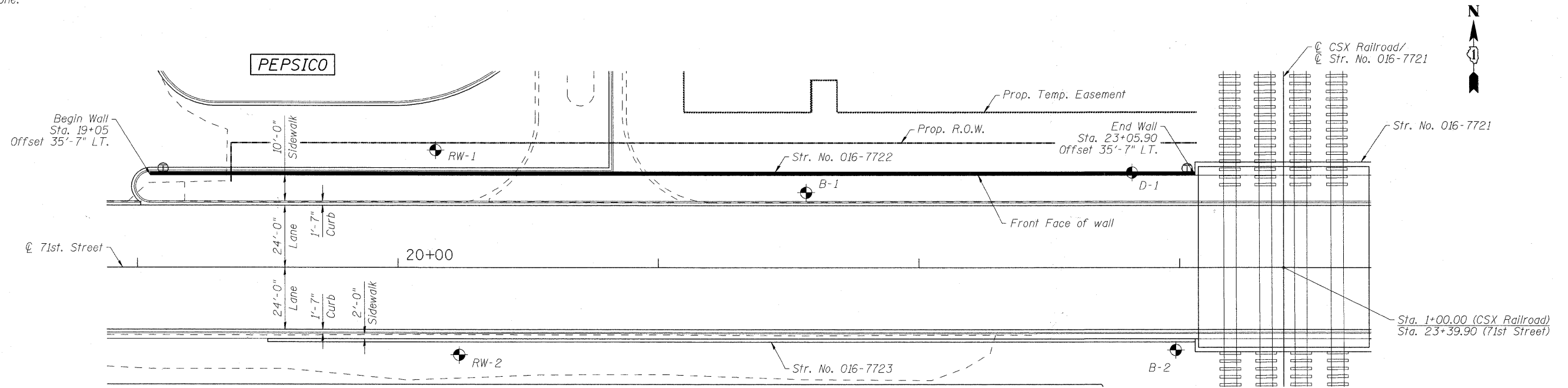
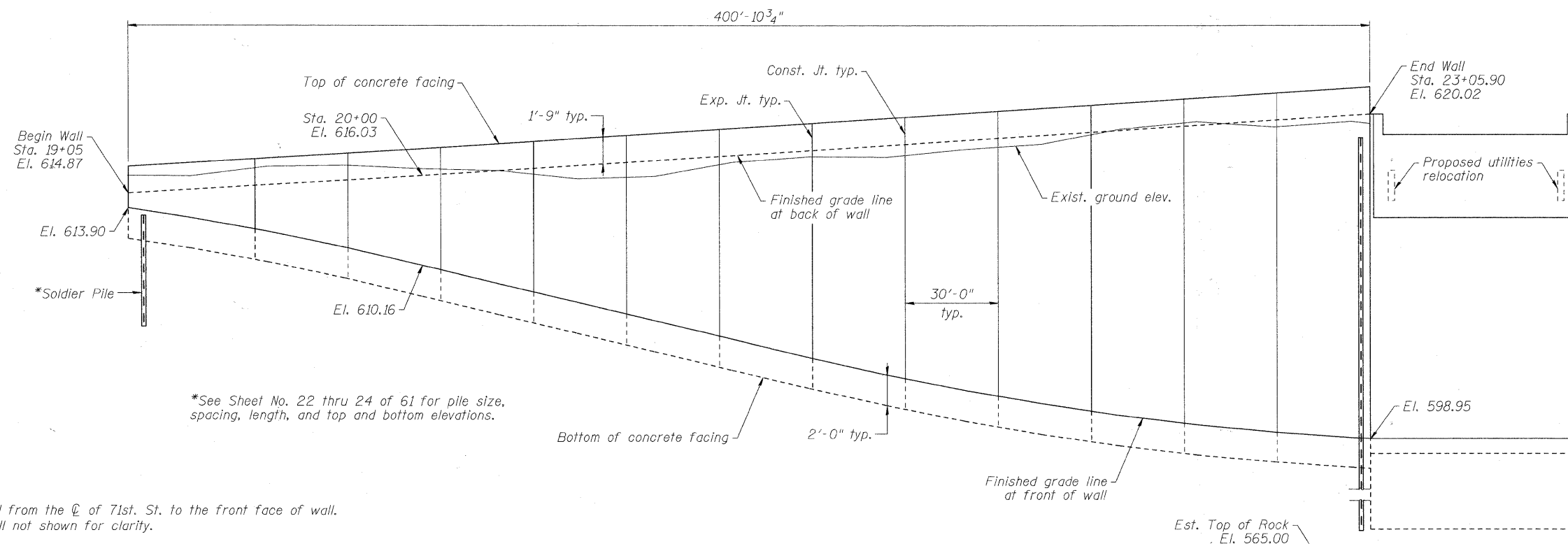


Bench Mark: BVW249 Square cut on N. conc. base of RR signal mast arm base on S. row of 71st Street 1/2 mile West of Harlem Avenue. Elev. 620.57

Existing Structure: None.



PLAN



ELEVATION  
(Looking @ front face of wall)

**NOTES:**

1. Offsets are measured from the  $\phi$  of 71st St. to the front face of wall.
2. Railing on top of wall not shown for clarity.

\*See Sheet No. 22 thru 24 of 61 for pile size, spacing, length, and top and bottom elevations.



USER NAME = dabestcd	DESIGNED - DD	REVISED -
PLOT SCALE = 0.1/0.000 1" / 16'	DRAWN - DD	REVISED -
PLOT DATE = 1/21/2011	CHECKED - EJO	REVISED -
	DATE - 10/11/2010	REVISED -

STATE OF ILLINOIS  
DEPARTMENT OF TRANSPORTATION

GENERAL PLAN & ELEVATION  
STRUCTURE NO. 016-7722

SCALE: SHEET NO. 21 OF 61 SHEETS STA. TO STA.

F.A.U. RTE. 1537	SECTION 06-00050-00-GS	COUNTY COOK	TOTAL SHEETS 209	SHEET NO. 115
CONTRACT NO. 63556				
[ILLINOIS] FED. AID PROJECT				

FILE NAME = P:\0155677\000-CAD\001-Drawings\Sheets\Structural\016-7722\1001-sh121-GR&E.dgn