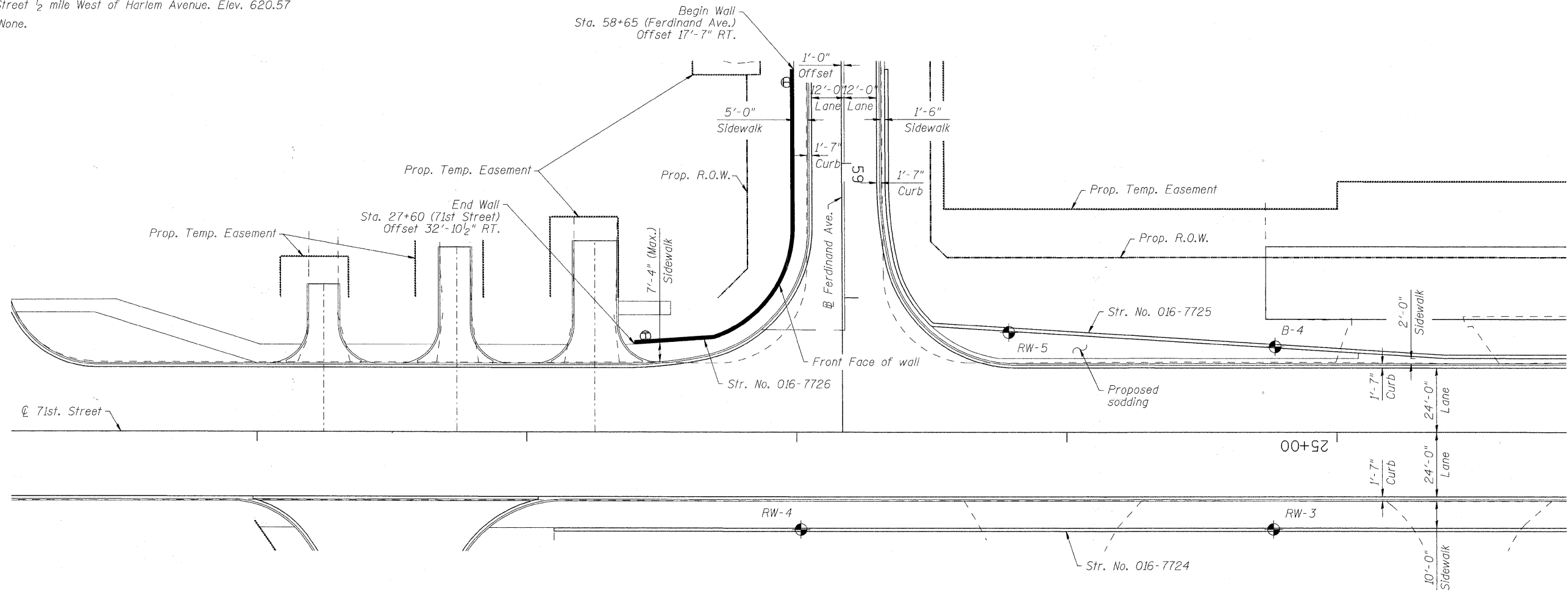


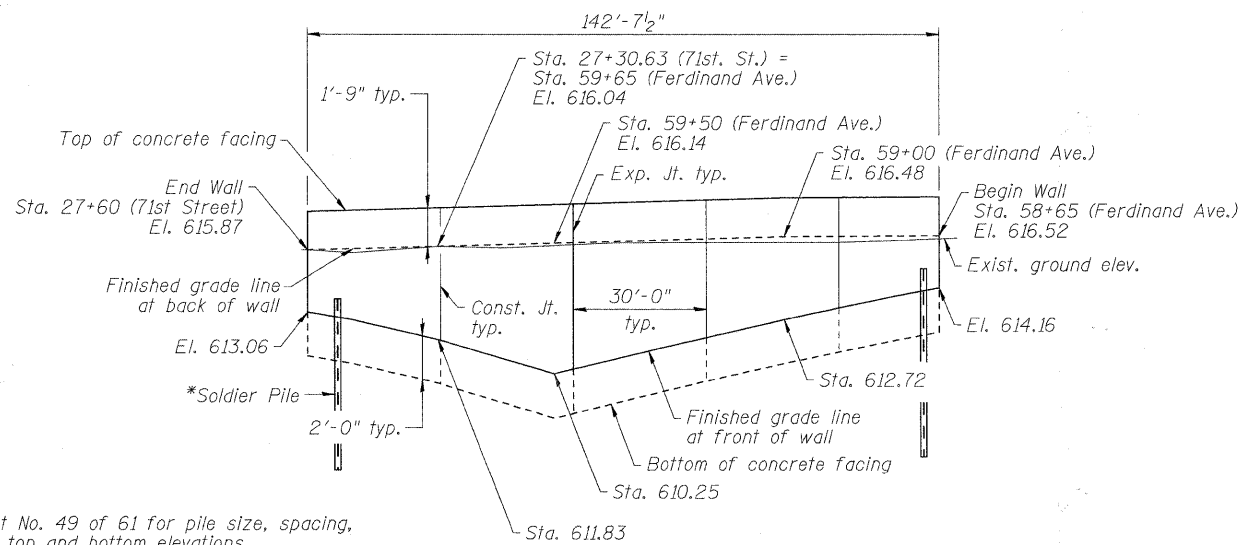
Bench Mark: BW249 Square cut on N. conc. base of RR signal mast arm base on S. row of 71st Street 1/2 mile West of Harlem Avenue. Elev. 620.57  
Existing Structure: None.



PLAN

**NOTES:**

1. Offsets are measured from the  $\odot$  of 71st. St. and  $\oplus$  of Ferdinand Ave. to the front face of wall.
2. Railing on top of wall shown for clarity.



\*See Sheet No. 49 of 61 for pile size, spacing, length and top and bottom elevations.

**ELEVATION**

(Unfolded elevation view)  
(Looking @ front face of wall)

FILE NAME = P:\60155877\000\_CAD\001\_Drawing\Sheets\Structural\016-7726\_1001.dwg



USER NAME = dabezid	DESIGNED - DD	REVISED -
PLOT SCALE = 0:1.0000' = 1" / IN.	DRAWN - DD	REVISED -
PLOT DATE = 1/21/2011	CHECKED - EJO	REVISED -
	DATE - 10/11/2010	REVISED -

**STATE OF ILLINOIS  
DEPARTMENT OF TRANSPORTATION**

**GENERAL PLAN & ELEVATION  
STRUCTURAL NO. 016-7726**

SCALE: SHEET NO. 48 OF 61 SHEETS STA. TO STA.

F.A.U. RTE.	SECTION	COUNTY	TOTAL SHEETS	SHEET NO.
1537	06-00050-00-GS	COOK	209	142
CONTRACT NO. 63556			ILLINOIS FED. AID PROJECT	