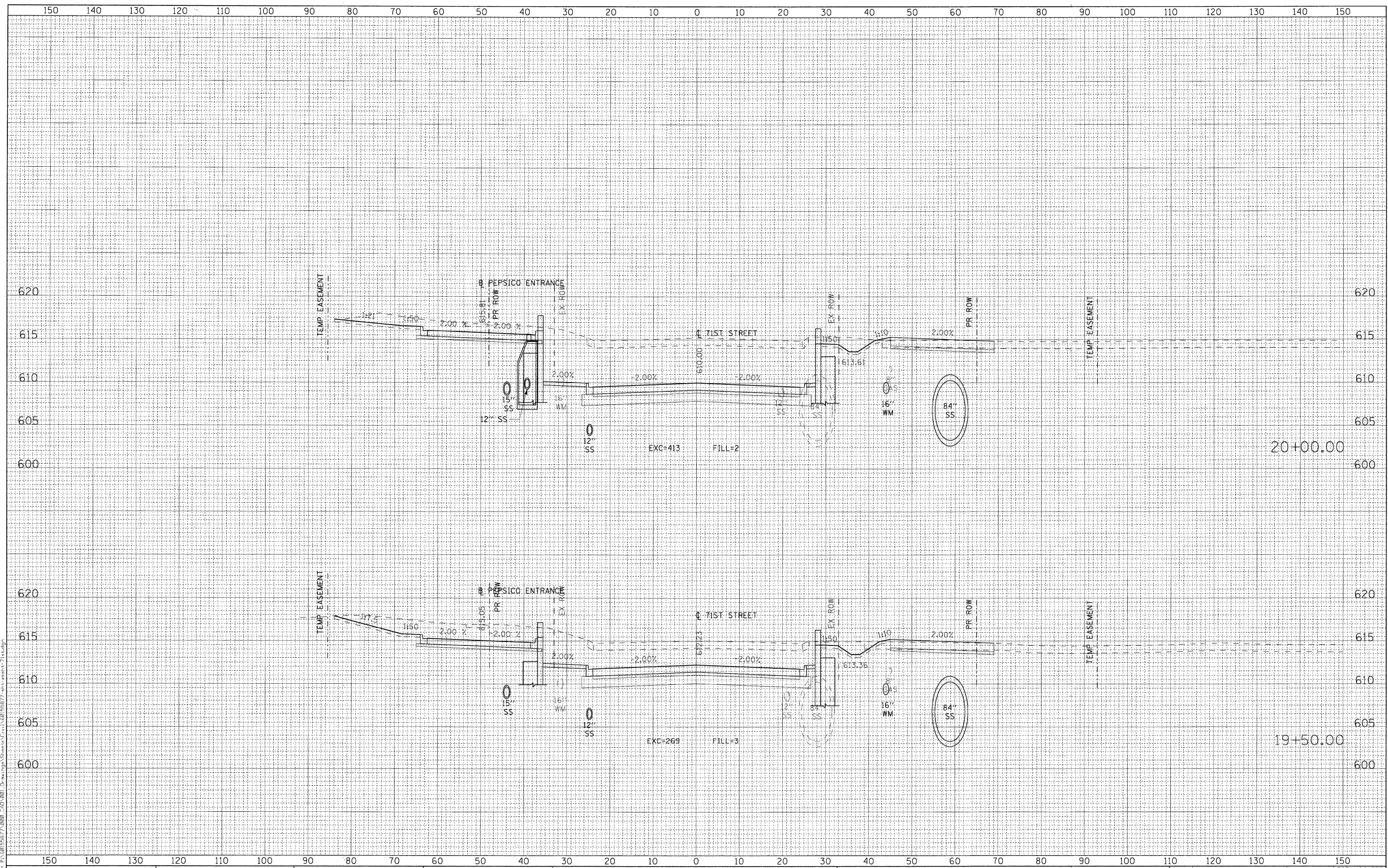


FINAL SURVEY NO.	SURVEYED	BY	DATE
NOTE BOOK NO.	PLOTTED		
	TEMPLATE		
	AREAS CHECKED		

ORIGINAL SURVEY NO.	SURVEYED	BY	DATE
	PLOTTED		
	TEMPLATE		
	AREAS CHECKED		



USER NAME = halmann	DESIGNED - NJH	REVISED -
PLOT SCALE = 10.000' / IN.	DRAWN - NJH	REVISED -
PLOT DATE = 1/6/2011	CHECKED - TJW	REVISED -
	DATE - DECEMBER 12, 2010	REVISED -

**STATE OF ILLINOIS
DEPARTMENT OF TRANSPORTATION**

CROSS SECTIONS - 71ST STREET

H: 1"=10', V: 1"=5' SHEET NO. 6 OF 20 SHEETS STA. 19+50.00 TO STA. 20+00.00

F.A.U. RTE. 1537	SECTION 06-00050-00-GA	COUNTY COOK	TOTAL SHEETS 209	SHEET NO. 187
CONTRACT NO. 63556				
ILLINOIS FED. AID PROJECT				