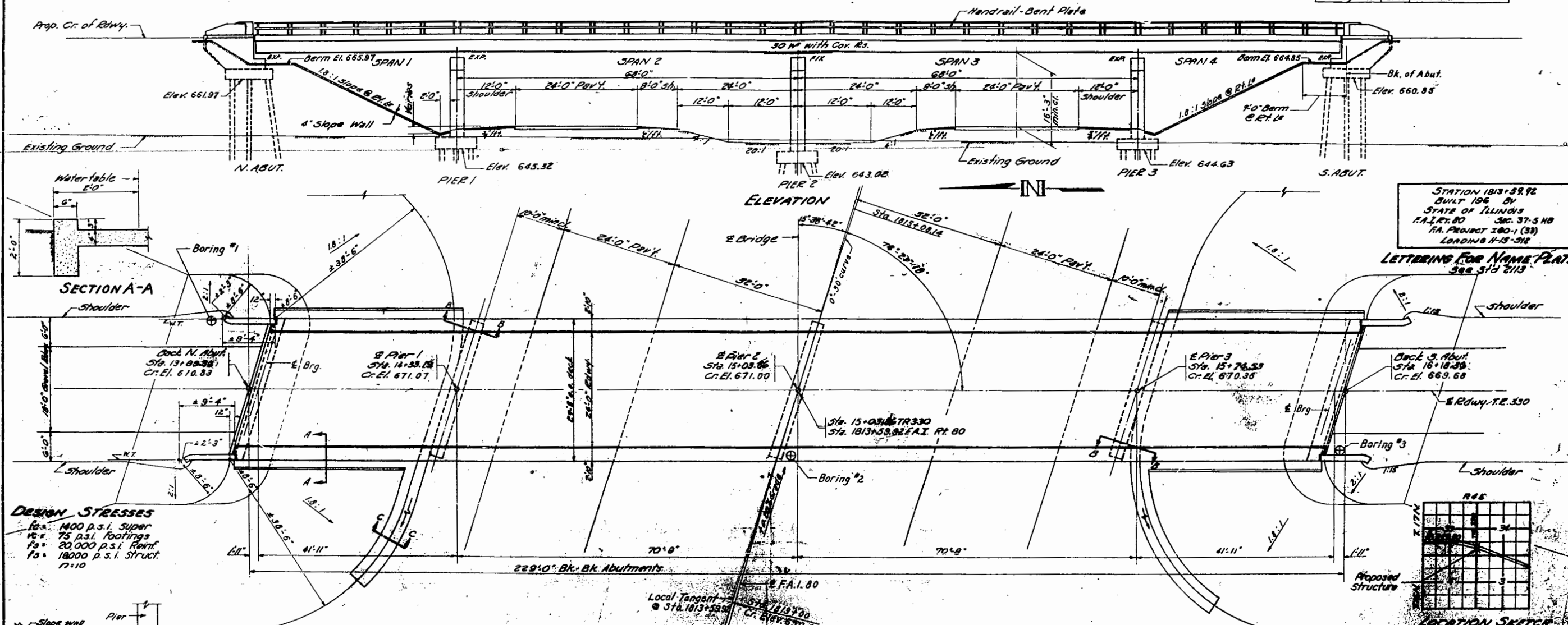


FOR INFORMATION ONLY

B.M. #27- Log screw in power pole 300' Lt. Sta. 1812+30
Elev. 653.14

STATE OF ILLINOIS DEPARTMENT OF PUBLIC WORKS & BUILDINGS DIVISION OF HIGHWAYS

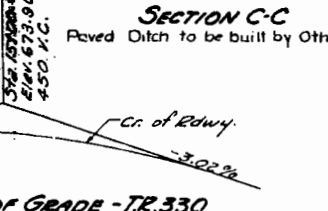
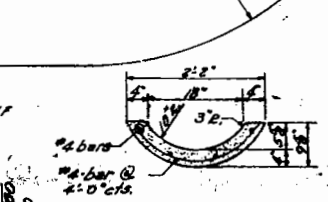
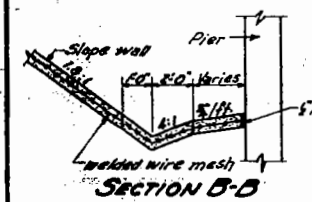
ROUTE NO.	SECTION	COUNTY	TOWNSHIP	SHEET NO.	SHEET NO. /
P.A.S. 80	37-5HB	Henry	21	4	10 SHEETS
FED. ROAD DIST. NO. 7	ILLINOIS	FED. AID PROJECT:			



STATION 1813+58.92
BUILT 196 BY
STATE OF ILLINOIS
P.A.S. 80 SEC. 37-5 HB
P.A. PROJECT 300-1 (33)
LOADING H-15-S18

LETTERING FOR NAME PLATE
See 512 2113

DESIGN STRESSES
 f_c = 1400 p.s.i. Super
 f_c = 75 p.s.i. Roofings
 f_s = 20,000 p.s.i. Reinf.
 f_s = 18,000 p.s.i. Struct.
 n = 10



PROFILE OF GRADE - T.E. 350

DESIGNED	T. Tanaka	EXAMINED	SEPT 19 1960 H.E. Benz
CHECKED	H. J. Hill	PASSED	E. J. Smith
DRAWN	L. N. RUSH	APPROVED	R. J. [Signature]
CHECKED	H. J. H.		

GENERAL NOTES
 Class X concrete shall be used throughout except in handrail and posts.
 Handrail concrete shall be used in handrail and posts.
 The concrete for this shall be finished in accordance with Article 51.9 of the Standard Specifications.
 Slope wall shall be reinforced with welded wire fabric 6"x6" mesh #4 wires weight 53# per 100 sq ft. Rivets #4, open holes 1/2", unless noted.

DON'T GENERAL NOTES
 Expansion guards are included in quantity of structural steel. Test weight 700 lbs.
 Expansion guards shall be fabricated with structural steel shall have one shop coat of red lead paint and two field coats of aluminum paint. See Article 51.13 of the Standard Specifications.
 All paint shall be furnished and applied by the contractor involved.
 The piles in the abutments shall be driven in holes drilled through the embankment to the natural ground line in accordance with Article 60.9(c) of the Standard Specifications.
 The contractor shall drive one Concrete Test Pile in a permanent location at the birth of the embankment and one Timber Test Pile in the vicinity of Pier #2, as directed by the Engineer before ordering or casting the remainder of the Piles.

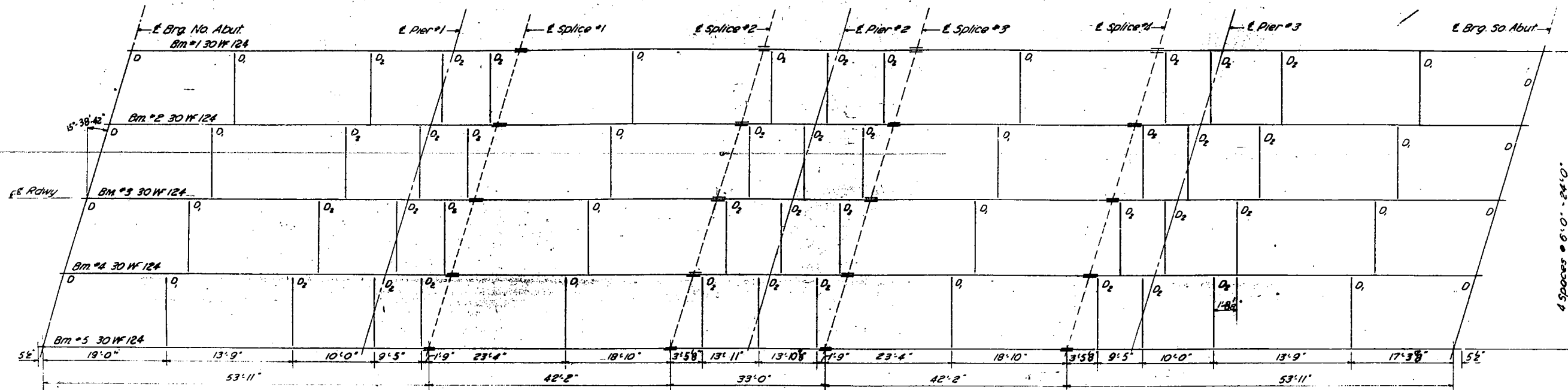
Item	Quantity	Unit	Value
Concrete	11760	Cu Yd	11760
Reinforcing Bars	46300	Lbs.	46300
Structural Steel	450	Lbs.	450
Concrete Piles	561	Lin. Ft.	561
Cast-in-place Concrete	1	Each	1
Crossed Piles	720	Lin. Ft.	720
Slope Wall	360	Sq. Yd.	360
Cost of Excav. for Str.	162	Cu Yd	162
Cost of [unclear]	11760	Cu Yd	11760
Name Plates	2	Each	2

PROJECT 300-1
 GENERAL PLAN & ELEVATION
 P.A.S. 80 SEC. 37-5 HB
 HENRY COUNTY
 STA. 1813+58.92 (P.A.S. 80)

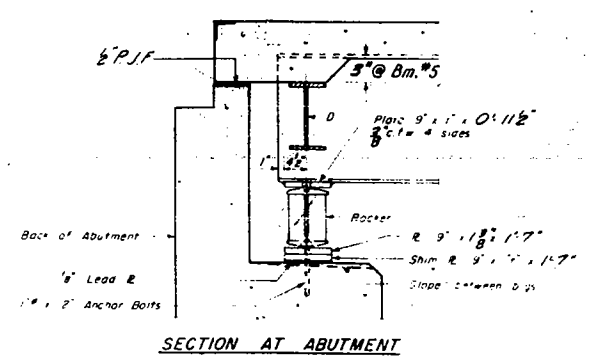
FOR INFORMATION ONLY

STATE OF ILLINOIS
DEPARTMENT OF PUBLIC WORKS & BUILDINGS
DIVISION OF HIGHWAYS

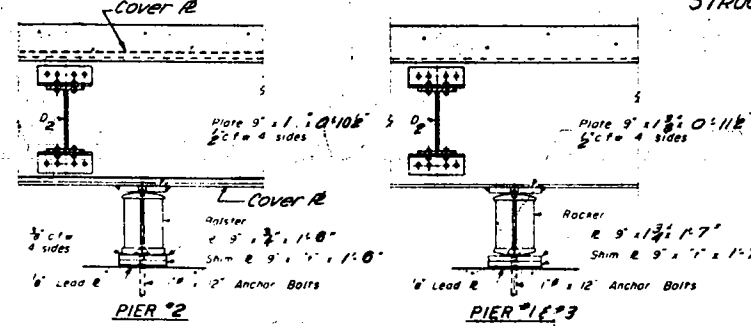
ROUTE NO.	SECTION	COUNTY	TOTAL SHEETS	SHEET NO.	SHEET NO.
80	37-5 HB	Henry	21	6	10 SHEETS
FED. ROAD DIST. NO. 7	CLASSIFICATION	FED. AID PROJECT			



STRUCTURAL STEEL LAYOUT

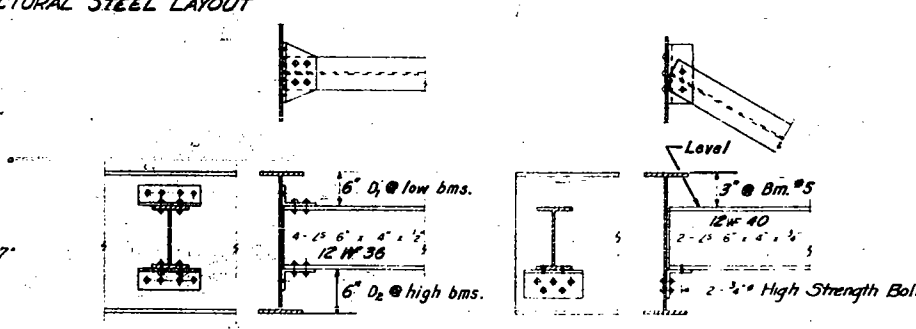


SECTION AT ABUTMENT



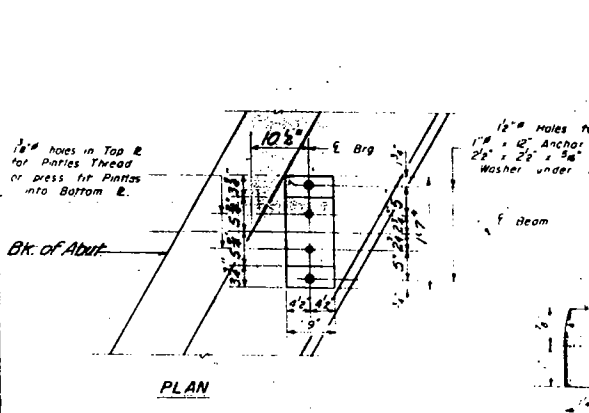
PIER #2

PIER #3

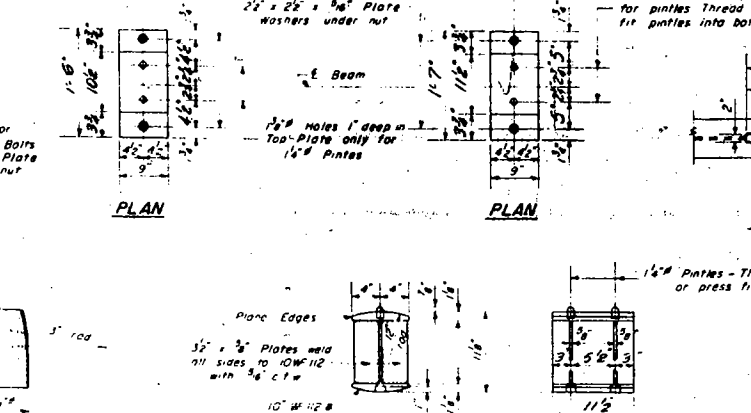


DIAPHRAGM D, E, D₂

DIAPHRAGM D

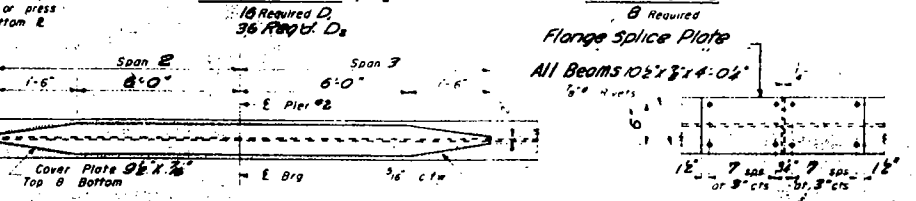


PLAN

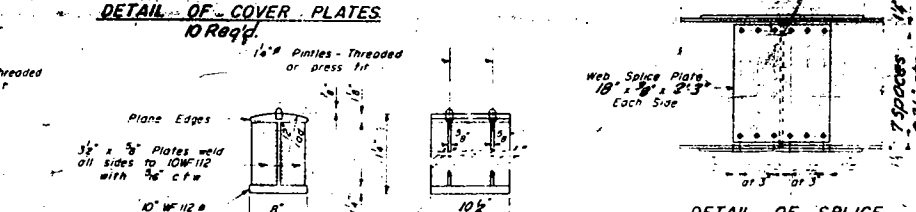


PLAN

PLAN



DETAIL OF COVER PLATES



DETAIL OF BEARING AT PIER #2

DETAIL OF SPLICE

ELEVATION TOP OF BEAMS					
Location	BM #1	BM #2	BM #3	BM #4	BM #5
E. Brq. No. Abut.	670.12	670.21	670.26	670.24	670.16
E. Brq. Pier #1	670.28	670.37	670.42	670.40	670.32
E. Splice #1	670.32	670.42	670.46	670.44	670.37
E. Splice #2	670.32	670.42	670.46	670.44	670.37
E. Brq. Pier #2	670.25	670.34	670.39	670.37	670.29
E. Splice #3	670.17	670.27	670.31	670.29	670.27
E. Splice #4	669.76	669.86	669.90	669.88	669.81
E. Brq. Pier #3	669.59	669.69	669.73	669.71	669.64
E. Brq. So. Abut.	668.95	669.09	669.13	669.11	668.04

Note: Elevation top of Beams does not include Dead Load Deflection.

STRUCTURAL STEEL DETAILS
F.A.I. RT 80 SEC 37-5 HB
HENRY COUNTY
STA. 1813+59.92 (F.A.I. RT. 80)

DESIGNED T. Tanaka
CHECKED H. J. H.
DRAWN W. A. Soutar
CHECKED H. J. H.

SEPT 19 1960

EXAMINED H. B. Exum
PAVED E. J. Smith
APPROVED M. B. Bartolucci

*TABLE OF 't' DIMENSIONS

Location	BM #1	BM #2	BM #3	BM #4	BM #5
E. Brq. North Abut.	0	0	1/8"	3/16"	9/16"
E. Brq. Pier #1	0	0	1/8"	3/16"	9/16"
E. Brq. Pier #2	0	0	1/8"	3/16"	9/16"
E. Brq. Pier #3	0	0	1/8"	3/16"	9/16"
E. Brq. South Abut.	0	0	1/8"	3/16"	9/16"

*t denotes thickness of shim plates at Bearing