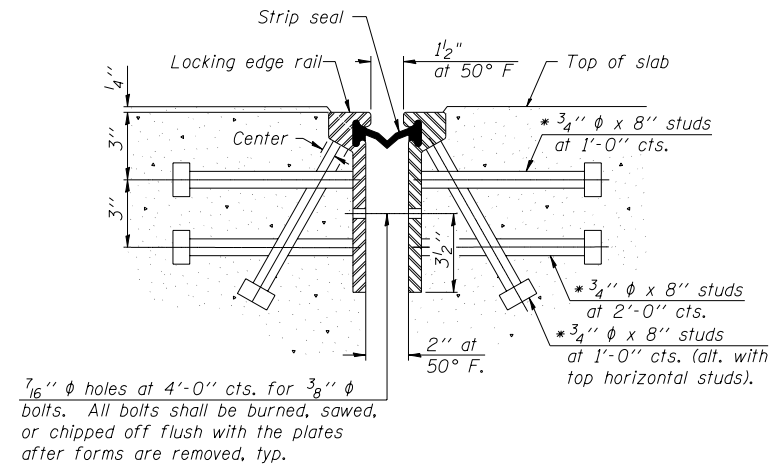
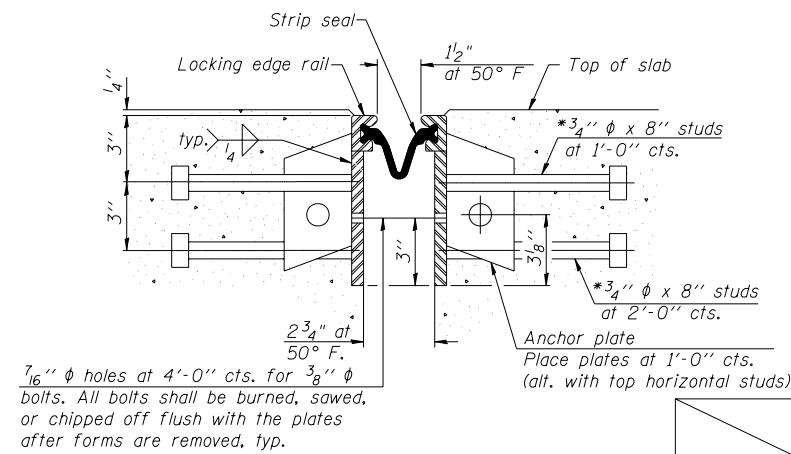


* Granular or solid flux filled headed studs conforming to Article 1006.32 of the Std. Specs., automatically end welded.



SECTION THRU ROLLED RAIL JOINT

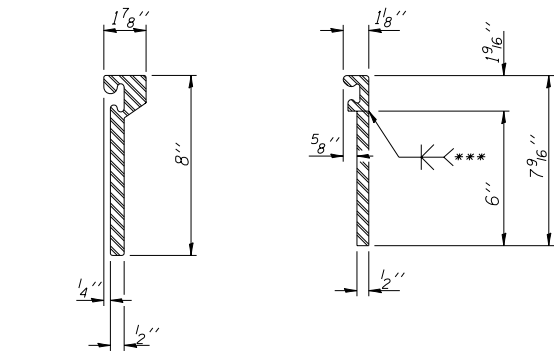


SECTION THRU WELDED RAIL JOINT

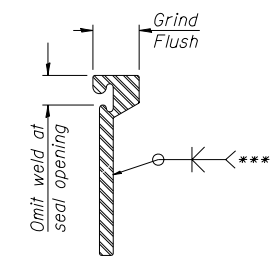
Notes:
 The strip seal shall be made continuous and shall have a minimum thickness of 1/4". The configuration of the strip seal shall match the configuration of the Locking Edge Rails. Open or "webbed" strip seal gland configurations are not permitted. The gland shall be sized for a maximum rated movement of 4 inches.
 The height and thickness of the Locking Edge Rails shown are minimum dimensions. The actual configuration of the Locking Edge Rails and matching strip seal may vary from manufacturer to manufacturer. Flanged edge rails will not be allowed. Locking Edge Rails may be spliced at slope discontinuities and stage construction joints.
 The manufacturer's recommended installation methods shall be followed.
 The joint opening and deck dimensions detailed on the superstructure are based on a rolled rail expansion joint. If the Contractor elects to use the welded rail expansion joint, the opening and deck dimensions shall be modified according to the dimensions detailed on this sheet. Required modifications shall be made at no additional cost to the State.
 All steel components shall be galvanized after fabrication according to Article 520.03 of the Standard Specifications.

7/16" diameter holes at 4'-0" cts. for 3/8" diameter bolts. All bolts shall be burned, sawed, or chipped off flush with the plates after forms are removed, typ.

7/16" diameter holes at 4'-0" cts. for 3/8" diameter bolts. All bolts shall be burned, sawed, or chipped off flush with the plates after forms are removed, typ.



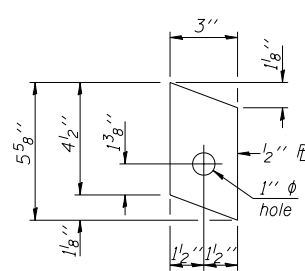
LOCKING EDGE RAILS
 ROLLED EXTRUDED RAIL
 WELDED RAIL



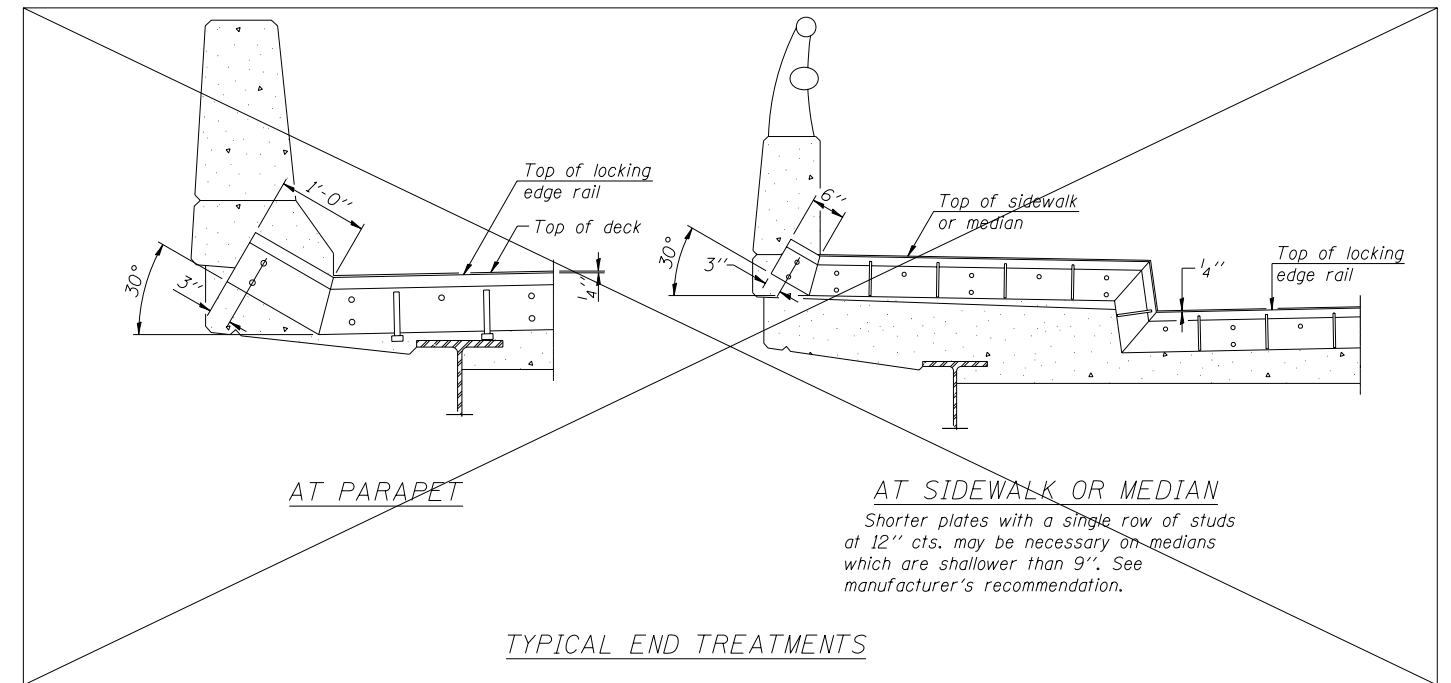
***Back gauge not required if complete joint penetration is verified by mock-up.

LOCKING EDGE RAIL SPLICE

The inside of the locking edge rail groove shall be free of weld residue.



ANCHOR PLATE (for welded rail)

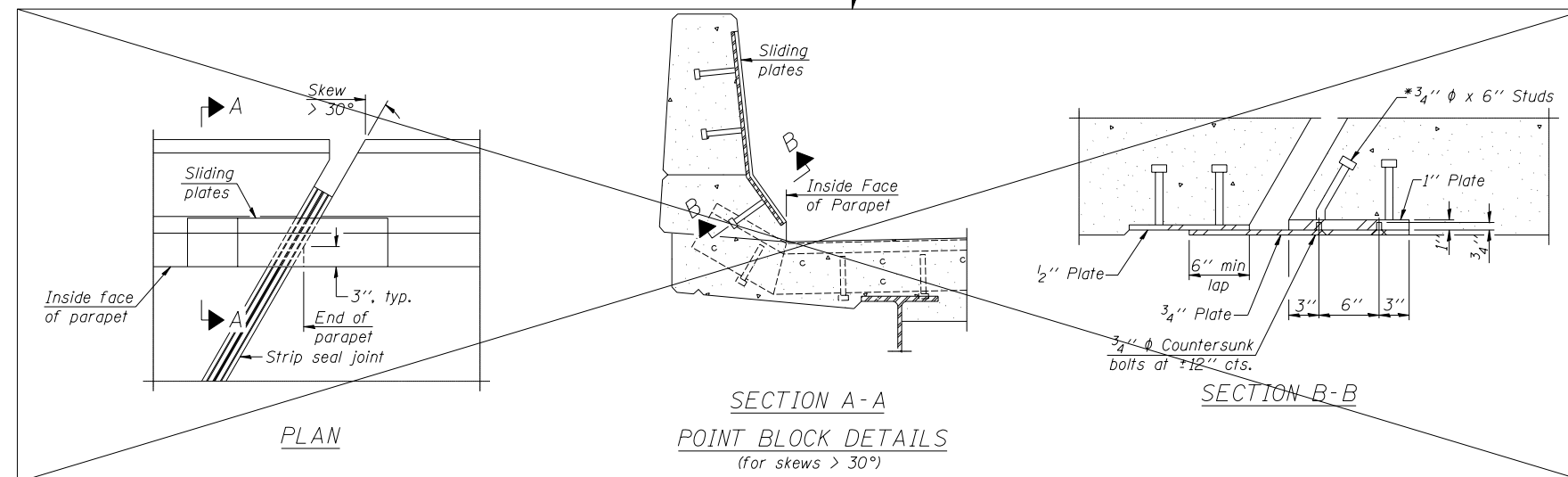


AT PARAPET

AT SIDEWALK OR MEDIAN

TYPICAL END TREATMENTS

* SEE DISTRICT 5 PREFORMED JOINT STRIP SEAL DETAIL, SHEET 9A OF 11A.



PLAN

SECTION A-A POINT BLOCK DETAILS (for skews > 30°)

SECTION B-B

BILL OF MATERIAL

Item	Unit	Total
Prefomed Joint Strip Seal	Foot	214

PREFORMED JOINT STRIP SEAL
 STRUCTURE NO. 057-0047 (EB)
 STRUCTURE NO. 057-0048 (WB)

EJ-SSJ

10-1-08

FILE NAME =	USER NAME = *USER*	DESIGNED - GMS	REVISED -
*FILE#		DRAWN - GMS	REVISED -
	PLOT SCALE = *SCALE*	CHECKED -	REVISED -
	PLOT DATE = *DATE*	DATE -	REVISED -

STATE OF ILLINOIS
 DEPARTMENT OF TRANSPORTATION

PREFORMED JOINT STRIP SEAL
 S.N. 057-0047 (EB) & S.N. 057-0048 (WB)

SCALE: SHEET NO. 8A OF 11A SHEETS STA. TO STA.

F.A.I. R.T.E.	SECTION	COUNTY	TOTAL SHEETS	SHEET NO.
74	57-20(1)&57-4,5,6R-3	MCLEAN	160	111
FED. ROAD DIST. NO. ILLINOIS FED. AID PROJECT			CONTRACT NO. 70505	