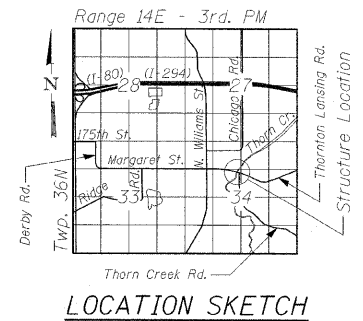


STATE OF ILLINOIS
DEPARTMENT OF TRANSPORTATION

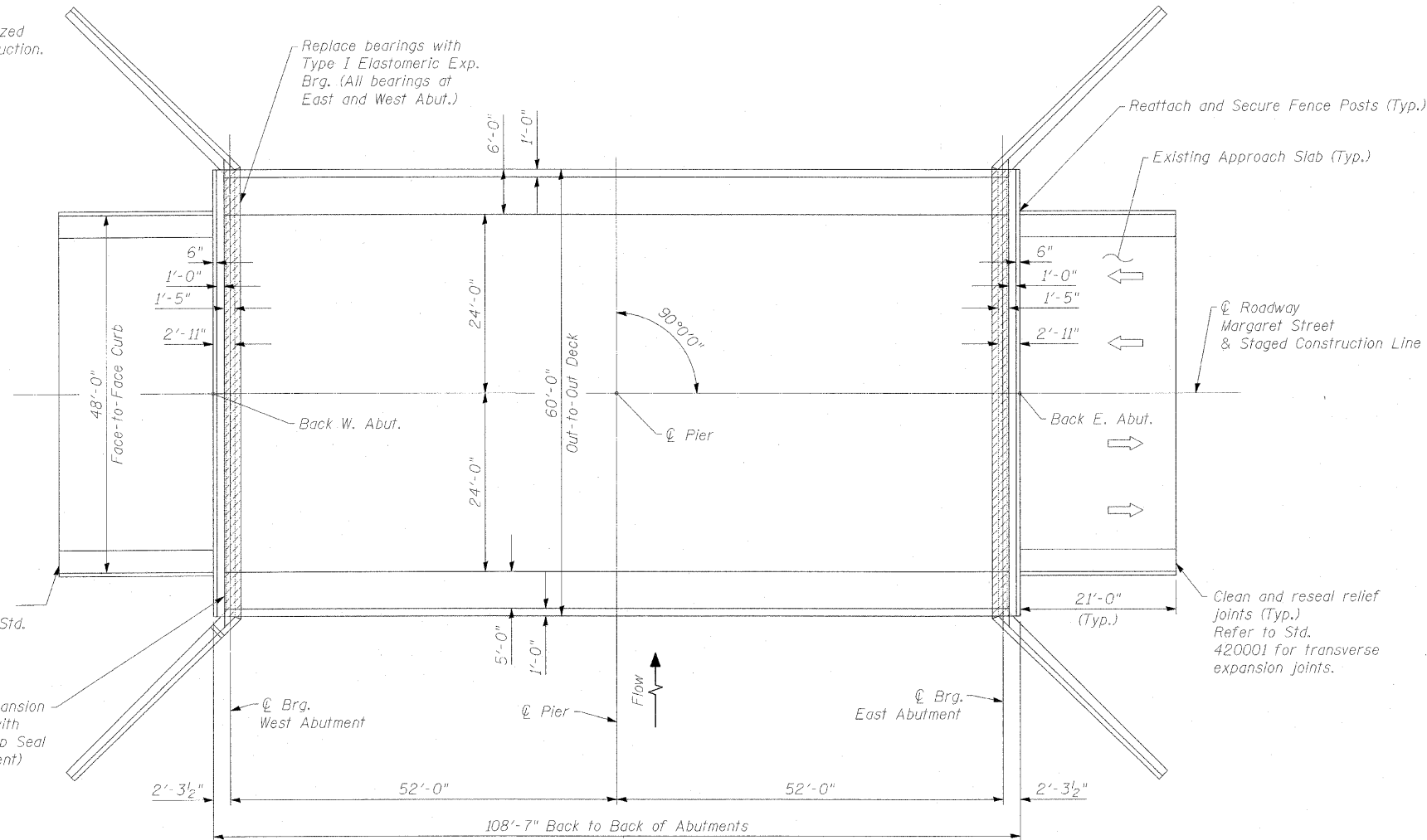


Existing Structure:

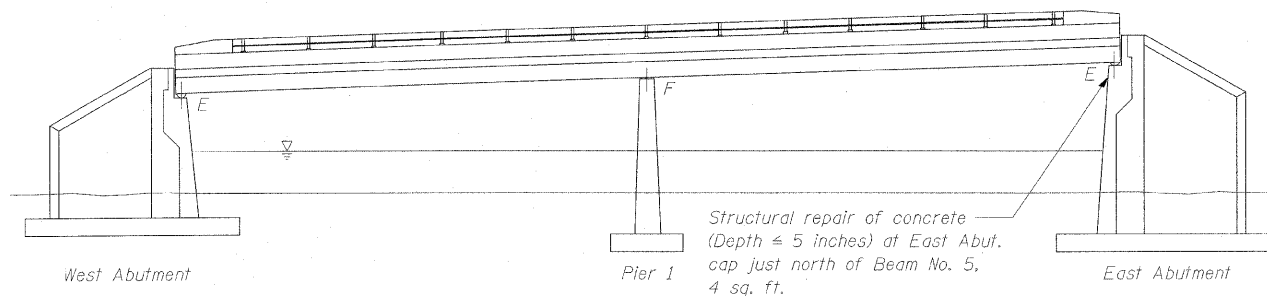
The existing structure is a two span steel beam bridge with a 7.5 inch reinforced concrete deck and a bituminous overlay. The original structure was built in 1969 as Section 43-15D-BR.

Staged construction shall be utilized to maintain traffic during construction.

No salvage.



PLAN



ELEVATION

SCOPE OF WORK

1. Remove and replace existing expansion bearings with elastomeric bearings.
2. Bridge deck and approach overlay removal.
3. Bridge deck hydro-scarification.
4. Repair bridge deck.
5. Reconstruct deck joints at each abutment with preformed strip seal.
7. Place new overlay on bridge deck and approaches.
8. Repair substructure and curb faces.
9. Clean and reseal pavement relief joints.

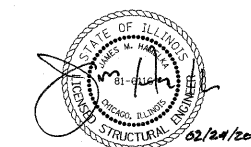
DESIGN SPECIFICATIONS

2002 AASHTO Standard Specifications for Highway Bridges, 17th Edition

DESIGN STRESSES

$f'_c = 3,500$ psi
 $f_y = 60,000$ psi

GENERAL PLAN & ELEVATION
MARGARET ST. AT THORN CREEK
F.A.U. 1620 SEC. 43-I-1
COOK COUNTY
STATION 21+86.29
STRUCTURE NO. 016-0573



COLLINS ENGINEERS, INC.
JAMES M. HAMELKA
NO. 81-6116
EXPIRES 11-30-2010

DESIGNED	JMH
CHECKED	LMS
DRAWN	VC
CHECKED	JMH

EXAMINED	2010
PASSED	ENGINEER OF STRUCTURAL SERVICES
	ENGINEER OF BRIDGES AND STRUCTURES

SHEET NO. S1 OF S10 SHEETS	F.A.U. RTE.	SECTION	COUNTY	TOTAL SHEETS	SHEET NO.
	1620	43I-1	COOK	16	5
CONTRACT NO. 60J82					
ILLINOIS FED. AID PROJECT					