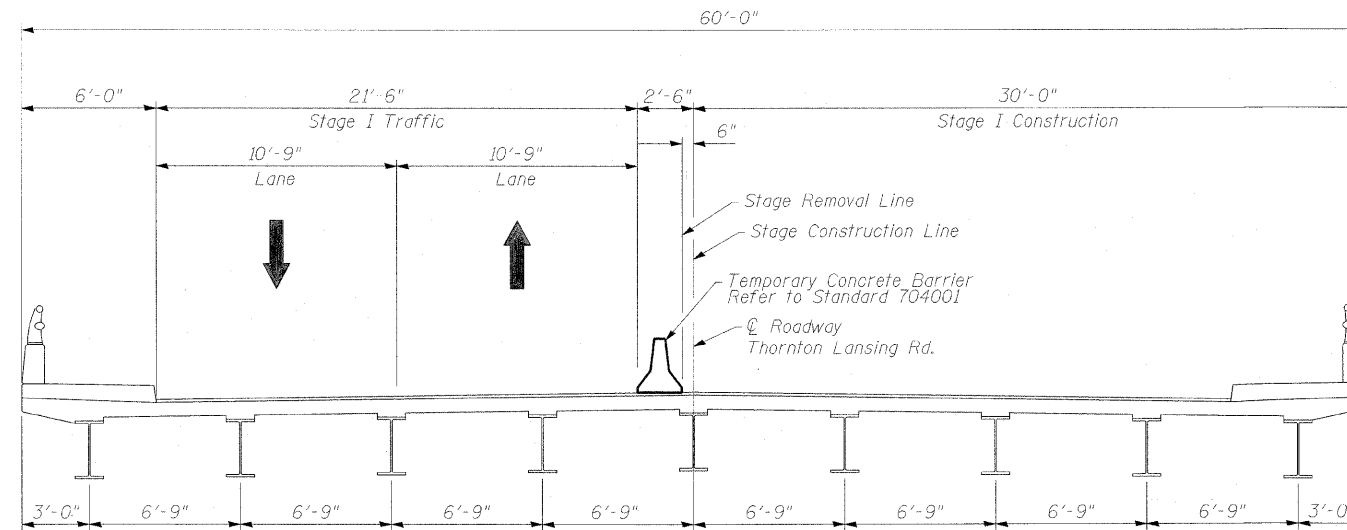
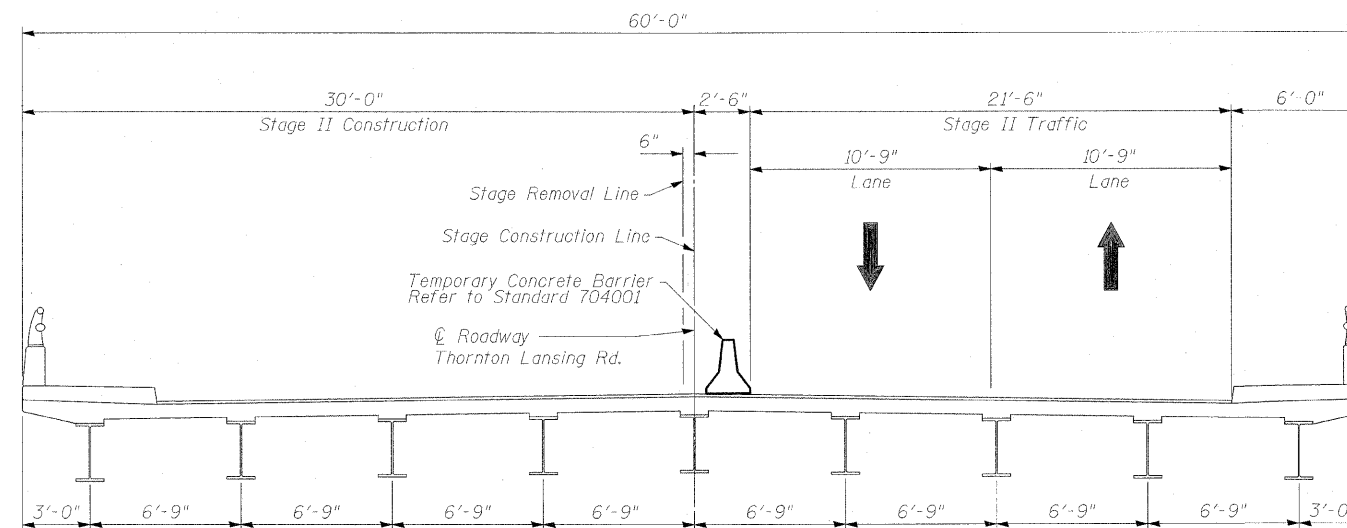


STATE OF ILLINOIS
DEPARTMENT OF TRANSPORTATION



STAGE I CROSS SECTION
Looking East



STAGE II CROSS SECTION
Looking East

Note:
For Quantity of Temporary Concrete Barrier refer to Summary of Quantities.

DESIGNED	JMH
CHECKED	LMS
DRAWN	VC
CHECKED	JMH

EXAMINED	2010
PASSED	ENGINEER OF STRUCTURAL SERVICES
	ENGINEER OF BRIDGES AND STRUCTURES

STAGE CONSTRUCTION DETAILS
STRUCTURE 016-0573

SHEET NO. S3 OF S10 SHEETS	F.A.U RTE.	SECTION	COUNTY	TOTAL SHEETS	SHEET NO.
	1620	43I-1	COOK	16	7
CONTRACT NO. 60J82					
ILLINOIS FED. AID PROJECT					