



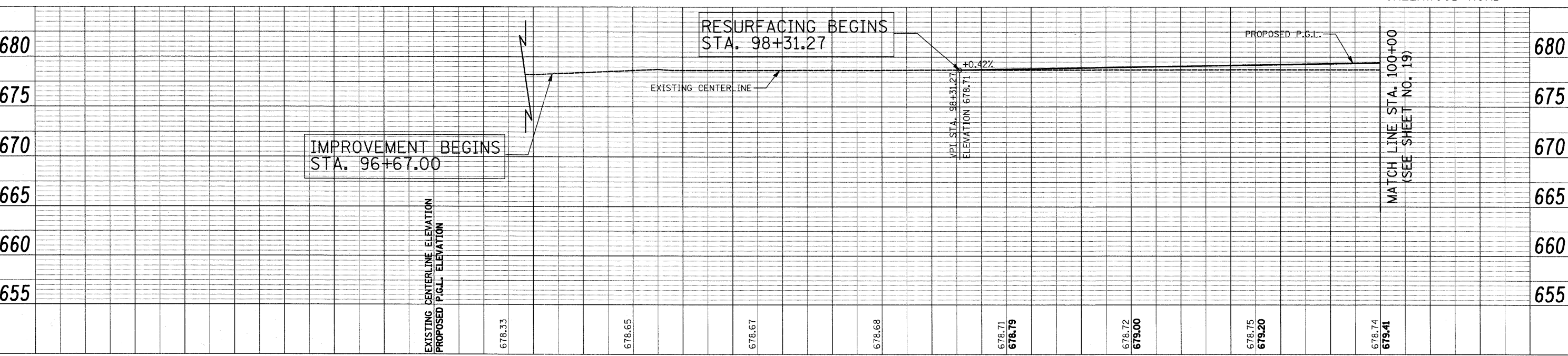
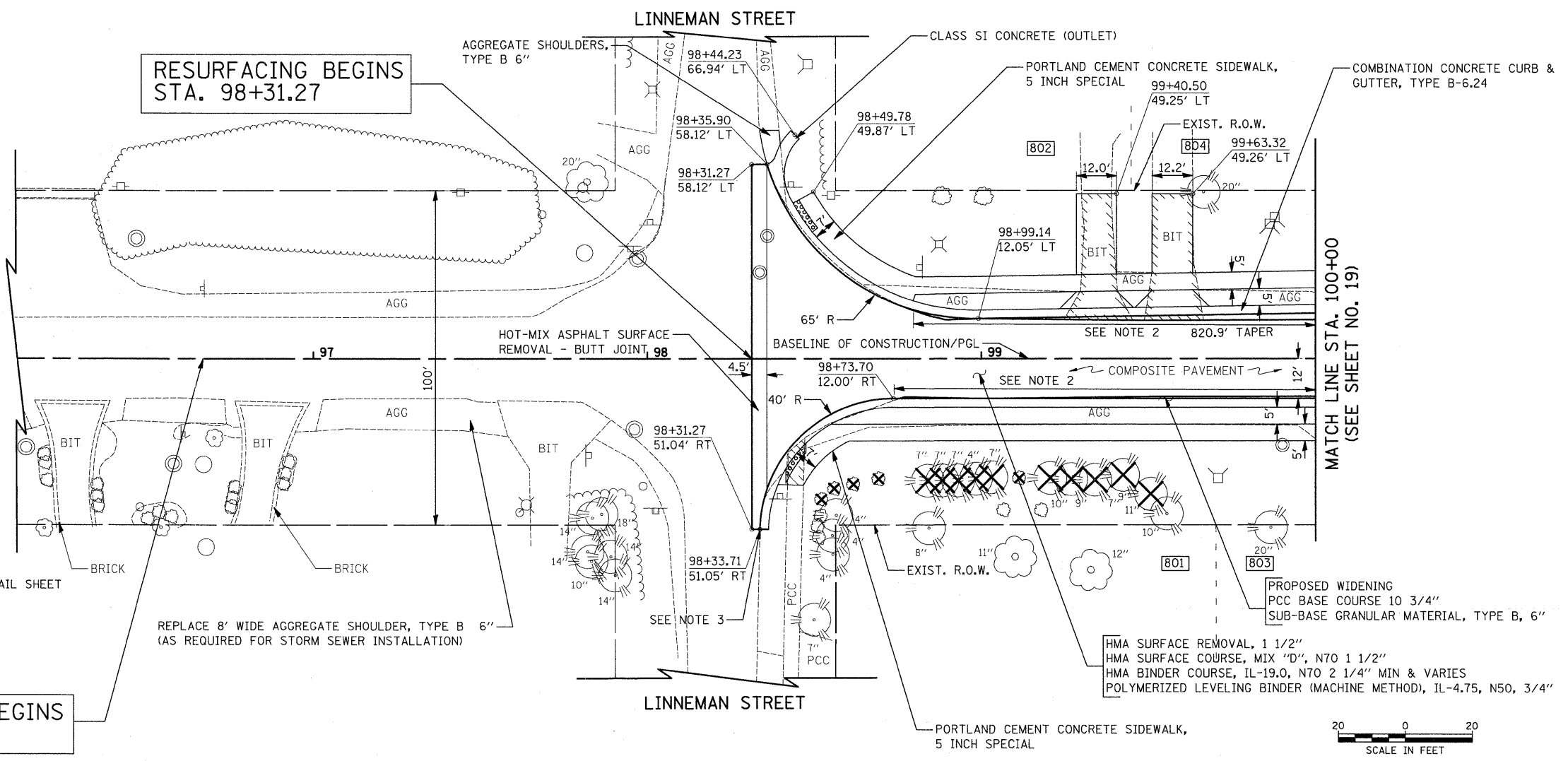
DATE	
BY	
PLAN	
NO.	
DATE	
BY	
PROFILE	
NO.	

DATE	
BY	
PROFILE	
NO.	
DATE	
BY	
PLAN	
NO.	

- LEGEND**
- PAVEMENT REMOVAL
 - CURB AND GUTTER REMOVAL
 - SIDEWALK REMOVAL, DRIVEWAY REMOVAL
 - DETECTABLE WARNING
 - TREE / BUSH REMOVAL

NOTES:

1. SEE TYPICAL SECTIONS FOR LOCATIONS OF PROPOSED TIE BARS.
2. CONSTRUCT BASE COURSE MONOLITHICALLY WITH CURB AND GUTTER. SEE DETAIL SHEET NO. 70.
3. DEPRESS CURB FROM CROSSWALK TO PROJECT LIMIT ON SIDE STREET.



FILE NAME =	USER NAME = k-rk	DESIGNED - JAT	REVISED -	STATE OF ILLINOIS DEPARTMENT OF TRANSPORTATION	PLAN AND PROFILE	F.A.U. RTE.	SECTION	COUNTY	TOTAL SHEETS	SHEET NO.	
J:\2275\Cad\Sheets\2275_Plan&Profile.dwg		DRAWN - CDC	REVISED -			2743	05-00161-00-CH	COOK	112	18	
		CHECKED - DJK	REVISED -			CONTRACT NO. 63383					
		DATE - 11-23-09	REVISED -			FED. ROAD DIST. NO. 1 ILLINOIS FED. AID PROJECT M-8003(543)					