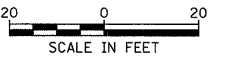
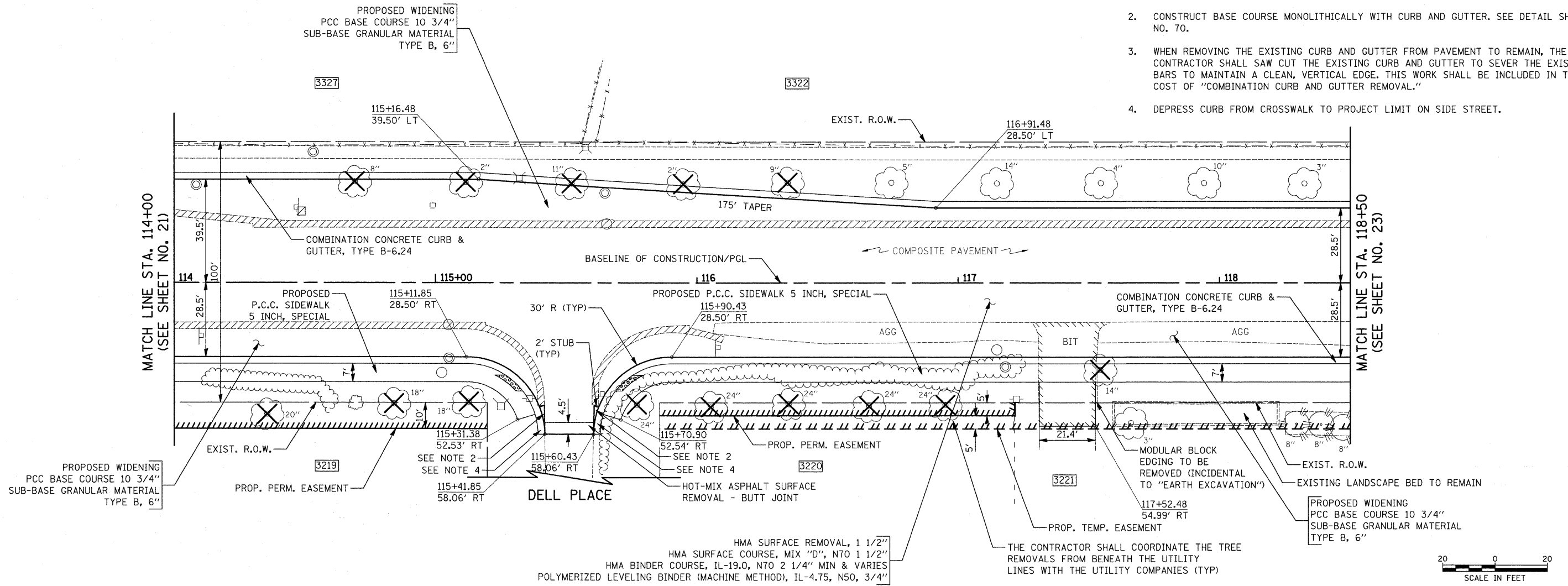


PLAN	DATE
REVISED	BY
GRADES CHECKED	DATE
ALIGNMENT CHECKED	
NOTE BOOK NO.	
FILE NAME	

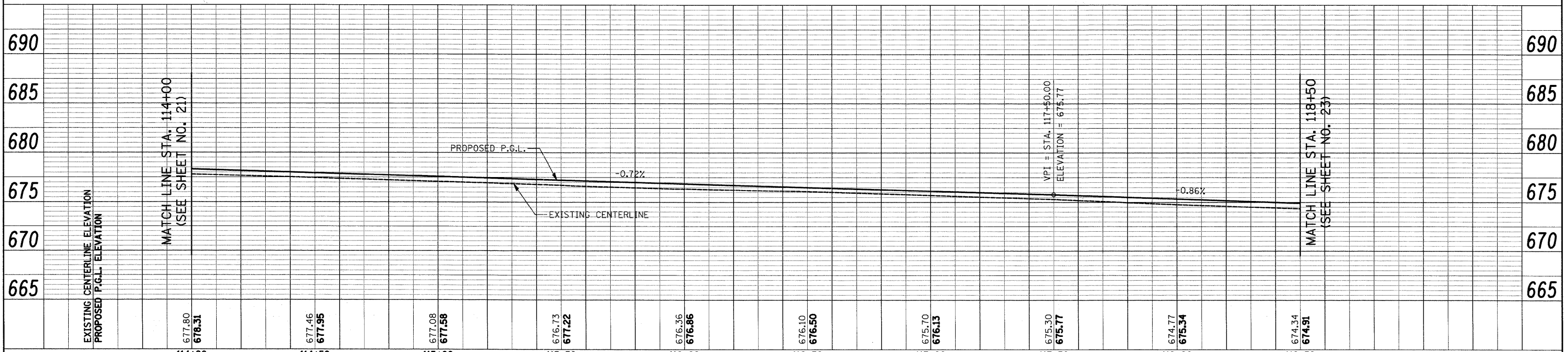
PROFILE	DATE
GRADES CHECKED	BY
B.M. NOTED	DATE
STRUCTURE NOTATIONS OK'D	
NOTE BOOK NO.	

NOTES:

1. SEE TYPICAL SECTIONS FOR LOCATIONS OF PROPOSED TIE BARS.
2. CONSTRUCT BASE COURSE MONOLITHICALLY WITH CURB AND GUTTER. SEE DETAIL SHEET NO. 70.
3. WHEN REMOVING THE EXISTING CURB AND GUTTER FROM PAVEMENT TO REMAIN, THE CONTRACTOR SHALL SAW CUT THE EXISTING CURB AND GUTTER TO SEVER THE EXISTING TIE BARS TO MAINTAIN A CLEAN, VERTICAL EDGE. THIS WORK SHALL BE INCLUDED IN THE COST OF "COMBINATION CURB AND GUTTER REMOVAL."
4. DEPRESS CURB FROM CROSSWALK TO PROJECT LIMIT ON SIDE STREET.



GREENWOOD ROAD



FILE NAME = J:\2275\Cad\Sheet\2275_Plan&Profile_05.dwg	USER NAME = kpk	DESIGNED = JAT	REVISED =	STATE OF ILLINOIS DEPARTMENT OF TRANSPORTATION	PLAN AND PROFILE	F.A.U. RTE. = 2743	SECTION = 05-00161-00-CH	COUNTY = COOK	TOTAL SHEETS = 112	SHEET NO. = 22	
PLOT SCALE = 20.00000' / IN.	DRAWN = CDC	CHECKED = DJK	REVISED =			CONTRACT NO. 63383					
PLOT DATE = 11/25/2009	DATE = 11-23-09	REVISED =	REVISED =			FED. ROAD DIST. NO. 1 ILLINOIS FED. AID PROJECT M-8003(543)					
SCALE: 1"=20'		SHEET NO. 5 OF 10 SHEETS				STA. 114+00 TO STA. 118+50					