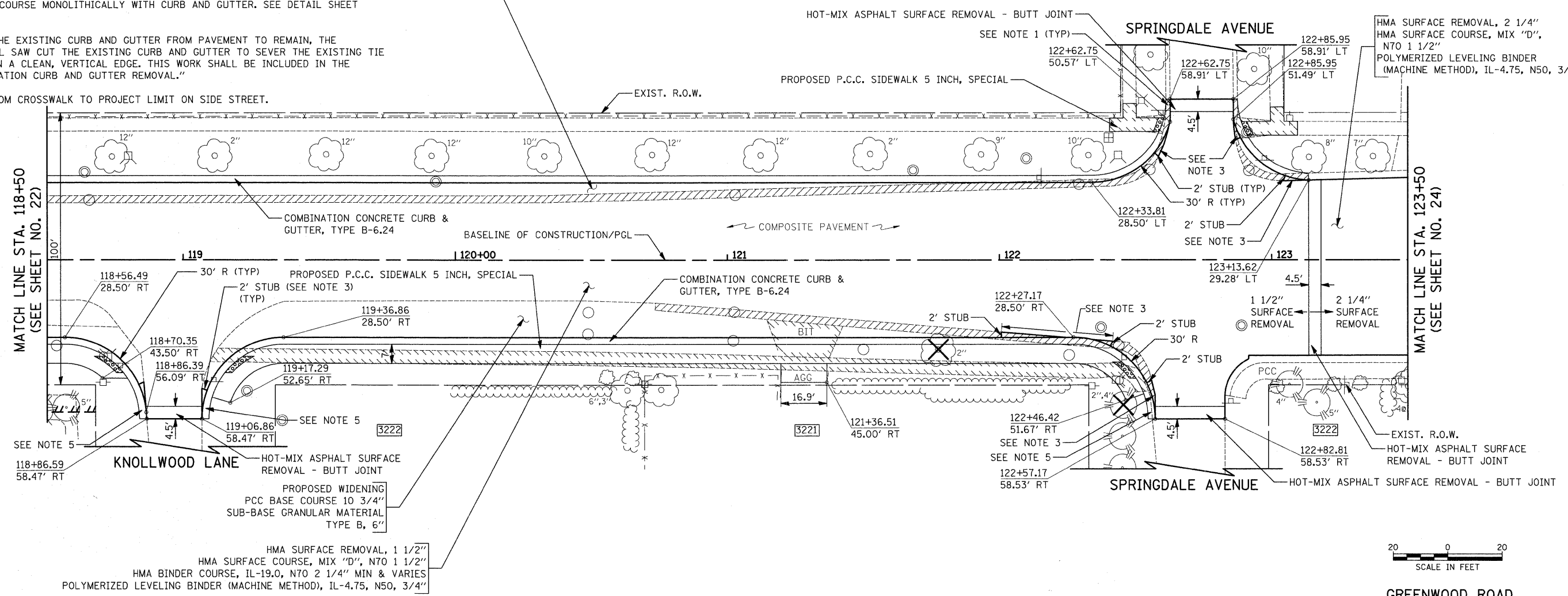


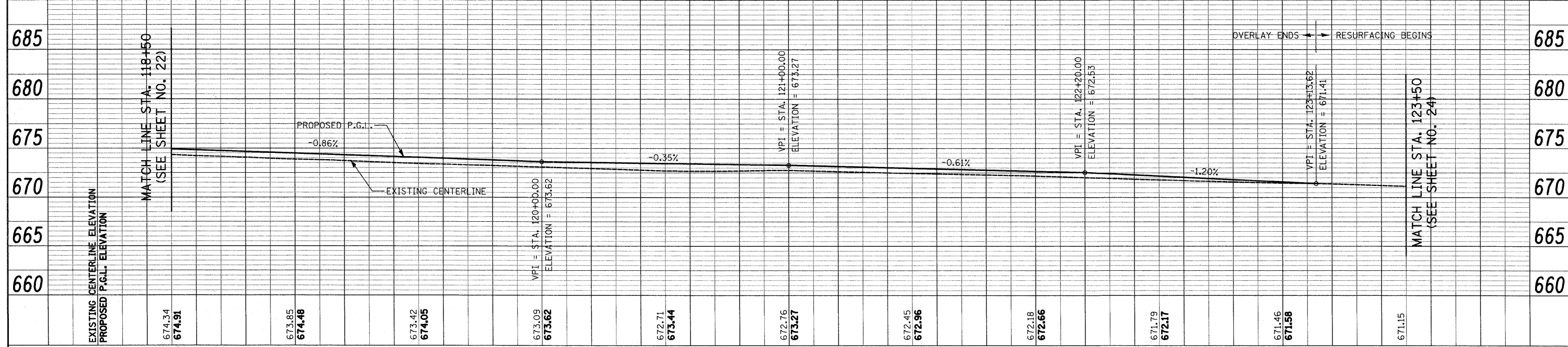
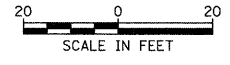
NOTES:

- TRANSITION CURB FROM B-6.24 TO B-6.12 OVER 10'. PAID FOR AS "COMBINATION CONCRETE CURB & GUTTER, TYPE B-6.24".
- SEE TYPICAL SECTIONS FOR LOCATIONS OF PROPOSED TIE BARS.
- CONSTRUCT BASE COURSE MONOLITHICALLY WITH CURB AND GUTTER. SEE DETAIL SHEET NO. 70.
- WHEN REMOVING THE EXISTING CURB AND GUTTER FROM PAVEMENT TO REMAIN, THE CONTRACTOR SHALL SAW CUT THE EXISTING CURB AND GUTTER TO SEVER THE EXISTING TIE BARS TO MAINTAIN A CLEAN, VERTICAL EDGE. THIS WORK SHALL BE INCLUDED IN THE COST OF "COMBINATION CURB AND GUTTER REMOVAL."
- DEPRESS CURB FROM CROSSWALK TO PROJECT LIMIT ON SIDE STREET.

PROPOSED WIDENING  
PCC BASE COURSE 10 3/4"  
SUB-BASE GRANULAR MATERIAL  
TYPE B, 6"



HMA SURFACE REMOVAL, 1 1/2"  
HMA SURFACE COURSE, MIX "D", N70 1 1/2"  
HMA BINDER COURSE, IL-19.0, N70 2 1/4" MIN & VARIES  
POLYMERIZED LEVELING BINDER (MACHINE METHOD), IL-4.75, N50, 3/4"



FILE NAME = J:\2275\Cad\Sheets\2275_Plan&Profile.06.dgn	USER NAME = krk	DESIGNED - JAT	REVISED -	<b>STATE OF ILLINOIS DEPARTMENT OF TRANSPORTATION</b>	<b>PLAN AND PROFILE</b>	F.A.U. RTE. 2743	SECTION 05-00161-00-CH	COUNTY COOK	TOTAL SHEETS 112	SHEET NO. 23		
PLOT SCALE = 20.0000' / IN.	CHECKED - DJK	REVISED -	SCALE: 1"=20'			SHEET NO. 6 OF 10 SHEETS	STA. 118+50 TO STA. 123+50	CONTRACT NO. 63383				
PLOT DATE = 11/25/2009	DATE = 11-23-09	REVISED -	FED. ROAD DIST. NO. 1   ILLINOIS   FED. AID PROJECT M-8003(543)									

PLAN	SURVEYED	BY	DATE
	PLOTTED		
	CHECKED		
	NO. OF WAY CHECKED		
	CADD FILE NAME		

PROFILE	SURVEYED	BY	DATE
	PLOTTED		
	CHECKED		
	NO. OF WAY CHECKED		
	STRUCTURE NOTATIONS CHK'D		