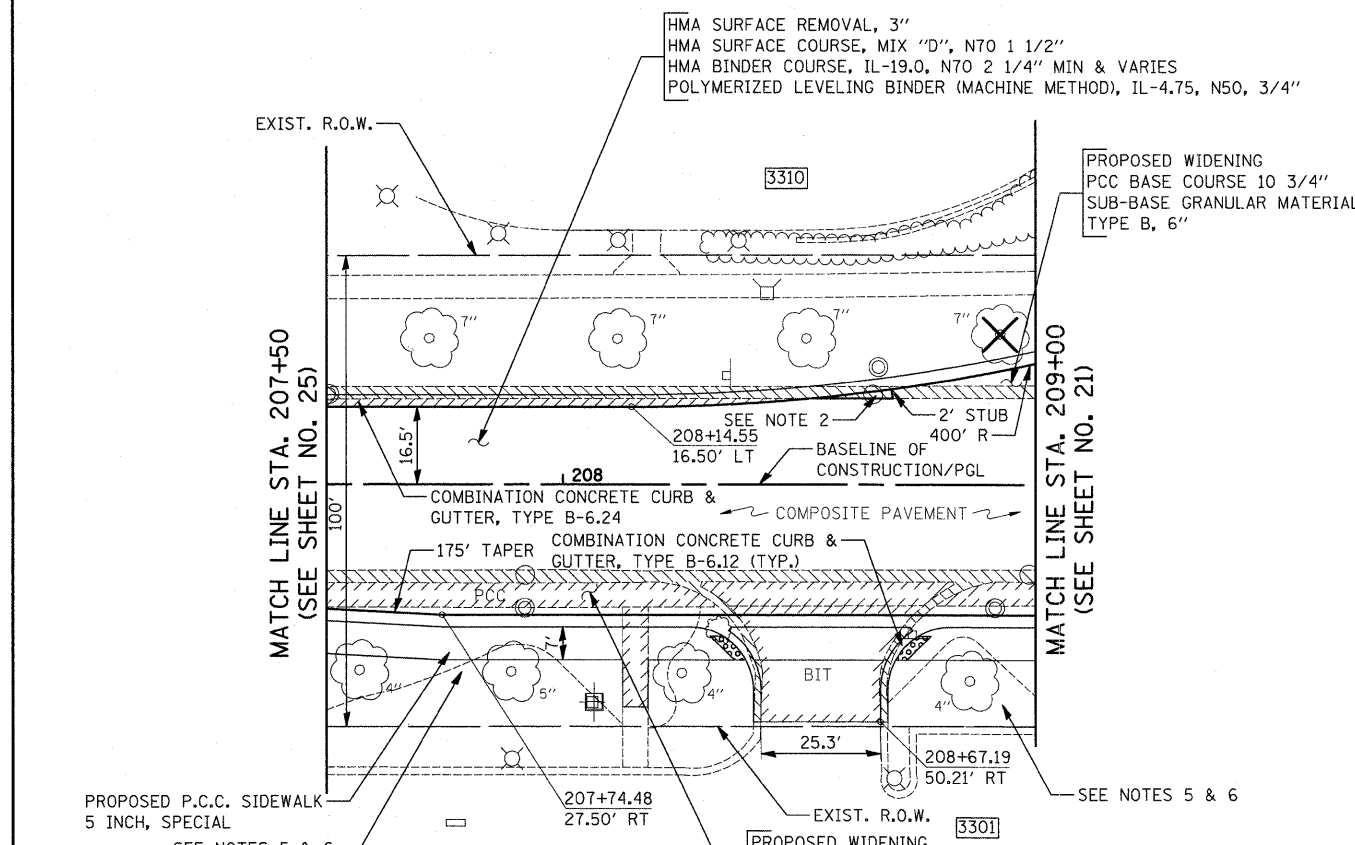
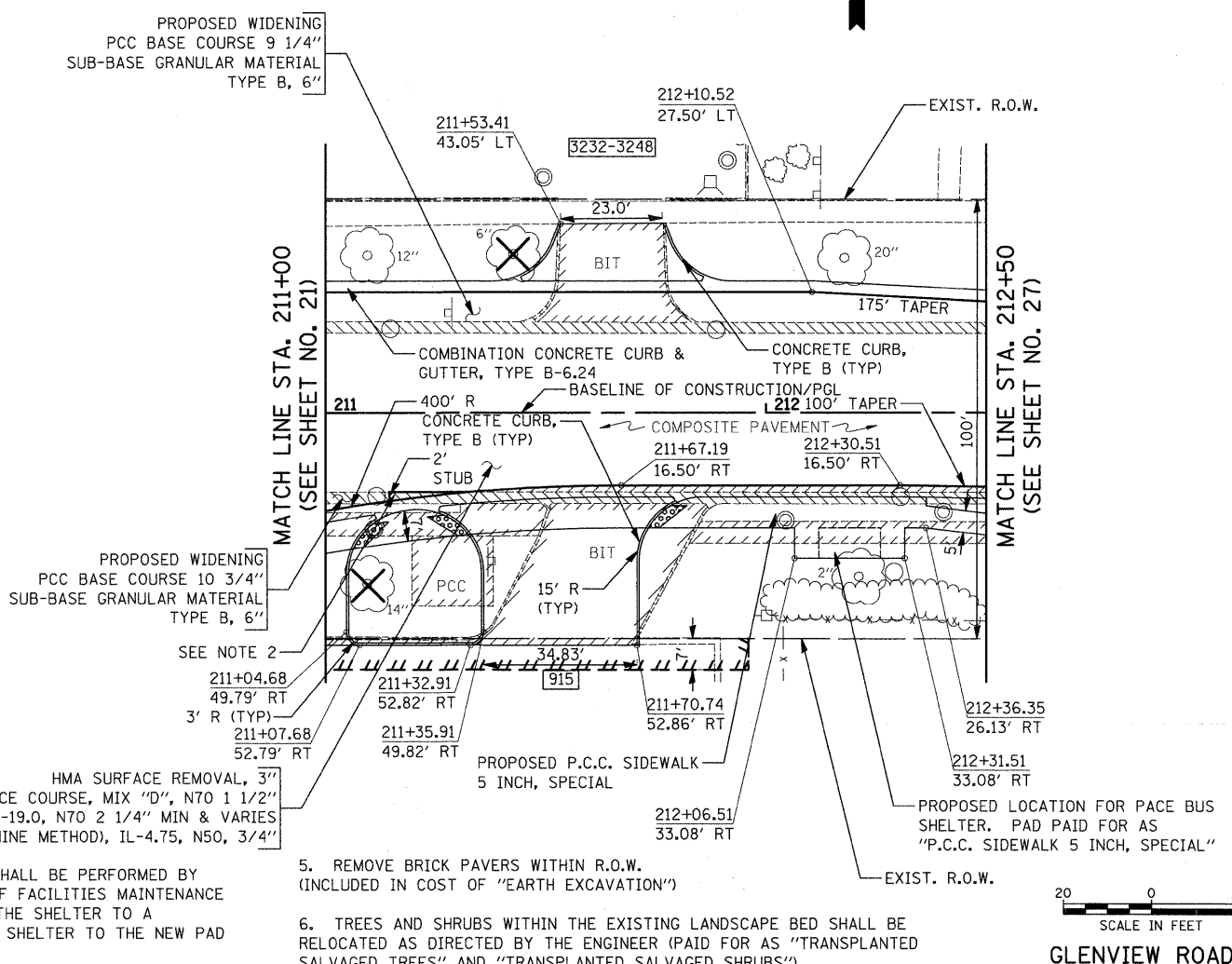


PLAN	SURVEYED	DATE
	PLOTTED	
	CHECKED	
	BY	
	NO.	
	FILE NAME	

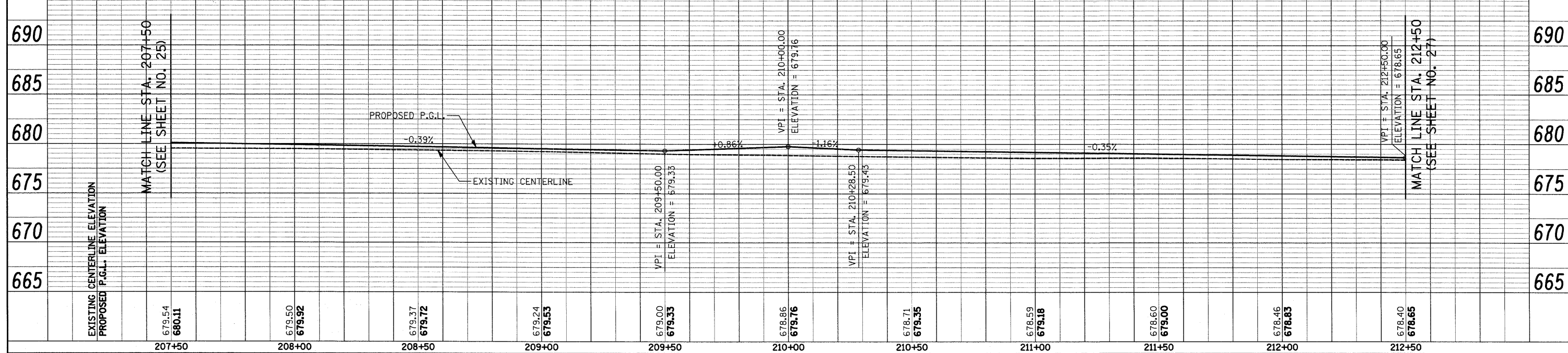
PROFILE	SURVEYED	DATE
	PLOTTED	
	CHECKED	
	BY	
	NO.	
	FILE NAME	



- NOTES:
- SEE TYPICAL SECTIONS FOR LOCATIONS OF PROPOSED TIE BARS.
 - CONSTRUCT BASE COURSE MONOLITHICALLY WITH CURB AND GUTTER. SEE DETAIL SHEET NO. 70.
 - WHEN REMOVING THE EXISTING CURB AND GUTTER FROM PAVEMENT TO REMAIN, THE CONTRACTOR SHALL SAW CUT THE EXISTING CURB AND GUTTER TO SEVER THE EXISTING TIE BARS TO MAINTAIN A CLEAN, VERTICAL EDGE. THIS WORK SHALL BE INCLUDED IN THE COST OF "COMBINATION CURB AND GUTTER REMOVAL."
 - THE RELOCATION OF THE EXISTING BUS SHELTER AND SIGN SHALL BE PERFORMED BY PACE. THE CONTRACTOR SHALL CONTACT PACE'S SUPERVISOR OF FACILITIES MAINTENANCE AT 708-649-3231, 5 DAYS IN ADVANCE OF THE NEED TO MOVE THE SHELTER TO A TEMPORARY LOCATION AND BEFORE THE NEED TO RELOCATE THE SHELTER TO THE NEW PAD LOCATION.



- REMOVE BRICK PAVERS WITHIN R.O.W. (INCLUDED IN COST OF "EARTH EXCAVATION")
- TREES AND SHRUBS WITHIN THE EXISTING LANDSCAPE BED SHALL BE RELOCATED AS DIRECTED BY THE ENGINEER (PAID FOR AS "TRANSPLANTED SALVAGED TREES" AND "TRANSPLANTED SALVAGED SHRUBS")



FILE NAME = J:\2275\Cad\Sheets\2275_Plan&Profile_09.dwg	USER NAME = krk	DESIGNED - JAT	REVISED -	STATE OF ILLINOIS DEPARTMENT OF TRANSPORTATION		PLAN AND PROFILE		F.A.U. RTE. 2743	SECTION 05-00161-00-CH	COUNTY COOK	TOTAL SHEETS 112	SHEET NO. 26
PLOT SCALE = 20.0000' / IN.	DATE = 11-23-09	DRAWN - CDC	REVISED -	SCALE: 1"=20'		SHEET NO. 9 OF 10 SHEETS		STA. 207+50 TO STA. 212+50		CONTRACT NO. 63383		
PLOT DATE = 11/25/2009	DATE = 11-23-09	CHECKED - DJK	REVISED -	FED. ROAD DIST. NO. 1		ILLINOIS		FED. AID PROJECT		M-8003(543)		