

- 82 SEE SHEET NO. 42
- 90 SEE SHEET NO. 42
- 95 SEE SHEET NO. 42
- 96 SEE SHEET NO. 42
- 97 SEE SHEET NO. 42
- 101 SEE SHEET NO. 42
- 102 SEE SHEET NO. 42
- 103 SEE SHEET NO. 42

- 105 SEE SHEET NO. 42
- 177 SEE SHEET NO. 46
- 184 111' - 18" S.S., CL. A, T-2 @ 1.00%  
T.B.F. = 21.4 CU. YD.
- 185 137' - 24" S.S., W.M.R., T-2 @ 0.30%  
T.B.F. = 93.6 CU. YD.
- 186 112' - 12" S.S. REMOVAL

- 187 3' - 10" S.S. REMOVAL
- 188 95' - 24" S.S. REMOVAL
- 189 7' - 12" S.S., CL. A, T-2 @ 0.50%  
T.B.F. = 0.2 CU. YD.
- 190 2' - 10" S.S. REMOVAL
- 191 18' - 18" S.S., CL. A, T-2 @ 1.00%  
T.B.F. = 3.7 CU. YD.

- 192 6' - 10" S.S. REMOVAL
- 193 4' - 12" S.S. REMOVAL
- 193A 4' - 18" S.S. REMOVAL
- 194A 2' - 12" S.S., CL.A, T-2 @ 2.00%  
T.B.F. = 0.6 CU. YD.
- 194 14' - 12" S.S., CL.A, T-1 @ 0.50%  
T.B.F. = 2.2 CU. YD.

- 195 4' - 12" S.S. REMOVAL
- 196 154' - 18" S.S., CL.A, T-2 @ 0.50%  
T.B.F. = 37.5 CU. YD.
- 197 8' - 12" S.S., CL.A, T-2 @ 1.00%  
T.B.F. = 3.1 CU. YD.

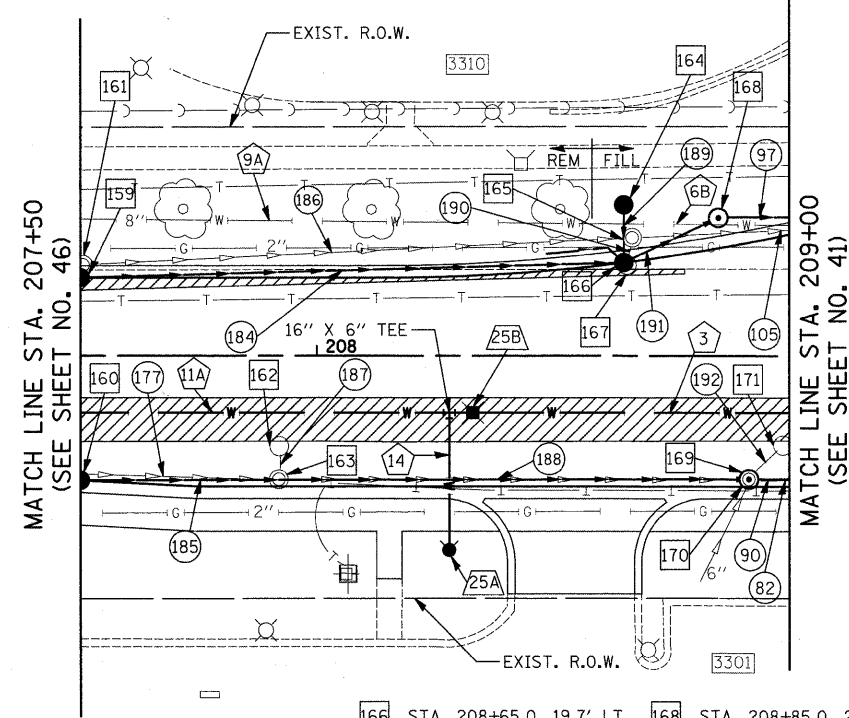
- 198 6' - 12" S.S. REMOVAL

- 25A STA. 208+28.0, 41.0' RT  
FH W/ AUX VALVE & VALVE BOX
- 25B STA. 208+33.0, 12.0' RT  
VALVE VAULT, TYPE A, 6' DIA.  
TYPE 1 FR., C.L.  
16" BUTTERFLY VALVE  
RIM = 679.55
- 25 STA. 211+02.2, 12.0' RT  
VALVE VAULT, TYPE A, 5' DIA.  
TYPE 1 FR., C.L.  
GATE VALVE 12"  
RIM = 678.93

- 3 SEE SHEET NO. 42
- 5D SEE SHEET NO. 42
- 6B SEE SHEET NO. 42
- 9A SEE SHEET NO. 46
- 11A SEE SHEET NO. 46
- 14 29' - 6" DUCTILE IRON  
WATERMAIN  
T.B.F. = 19.8 CU. YD.  
313' - 12" DUCTILE IRON  
WATERMAIN  
T.B.F. = 225.4 CU. YD.
- 15 SEE SHEET NO. 42

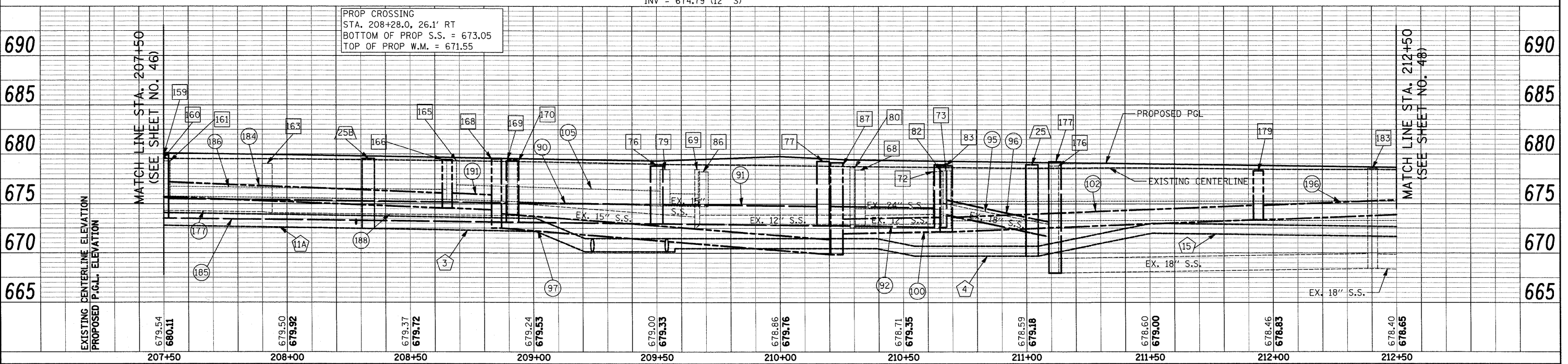
PLAN	SURVEYED	DATE
	PLOTTED	
	FILED	
	NOTED	
	RECORDED	
	INDEXED	
	BY	
	NO.	

PROFILE	SURVEYED	DATE
	PLOTTED	
	FILED	
	NOTED	
	RECORDED	
	INDEXED	
	BY	
	NO.	



- NOTES:
- ALL WATERMAIN BENDS SHOWN ARE 45° BENDS. THE COST OF THE BENDS SHALL BE PAID FOR AS "WATERMAIN FITTINGS".
  - REPLACE WATER SERVICES TO BANK (1.5'), STRIP MALL (2.0'), AND GAS STATION (1.5').

- 170 STA. 208+91.5, 26.0' RT  
MH T-A, 5' DIA.  
TYPE 1 FR., C.L.  
RIM = 679.04  
INV = 673.12 (24" W)  
INV = 673.12 (24" E)  
INV = 674.30 (EX 6" SW)
- 171 STA. 208+98.7, 18.9' RT  
CB TO BE REMOVED
- 172 STA. 211+14.7, 19.2' LT  
CB TO BE REMOVED
- 173 STA. 211+11.6, 18.9' RT  
CB TO BE REMOVED
- 174 STA. 211+15.0, 19.9' RT  
CB T-C  
TYPE 24 F & G  
RIM = 678.73  
INV = 674.79 (12" S)
- 175 STA. 211+04.7, 40.0' RT  
CB T-C  
TYPE 1 FR., O.L.  
RIM = 678.43  
INV = 676.00 (12" NE)
- 176 STA. 211+11.0, 26.4' RT  
MH TO BE REMOVED
- 177 STA. 211+15.0, 26.5' RT  
MH T-A, 5' DIA.  
TYPE 1 FR., C.L.  
RIM = 679.04  
INV = 674.75 (12" N)  
INV = 672.64 (18" W)  
INV = 667.98 (EX 18" E)  
INV = 675.93 (12" SW)
- 178 STA. 211+88.7, 18.9' LT  
CB TO BE REMOVED
- 179 STA. 211+92.0, 27.5' LT  
CB T-A, 4' DIA.  
TYPE 24 F & G  
RIM = 678.30  
INV = 673.35 (18" W)  
INV = 673.35 (18" E)
- 180 STA. 212+04.4, 24.4' RT  
MH TO BE ADJUSTED  
EX RIM = 678.50  
PR RIM = 678.76
- 181 STA. 212+30.0, 16.5' RT  
CB T-A, 4' DIA.  
TYPE 24 F & G  
RIM = 678.39  
INV = 673.54 (12" SE)  
INV = 674.89 (4" SW)
- 182 STA. 212+30.6, 19.1' RT  
CB TO BE REMOVED
- 183 STA. 212+40.3, 22.5' RT  
MH TO BE ADJUSTED  
EX RIM = 678.56  
PR RIM = 678.67  
INV = 673.46 (12" NW)  
INV = 673.56 (EX 10" SW)  
INV = 668.40 (EX 18" E)  
INV = 668.40 (EX 18" W)
- 184 STA. 212+29.1, 36.2' RT  
CB TO BE ADJUSTED  
EX RIM = 677.51  
PR RIM = 677.94



FILE NAME = J:\2275\Cad\Sheet\2275_D&U_10.dgn	USER NAME = k+k	DESIGNED - JAT	REVISED -	<b>STATE OF ILLINOIS DEPARTMENT OF TRANSPORTATION</b>		<b>DRAINAGE AND UTILITIES</b>		F.A. RTE. 2743	SECTION 05-00161-00-CH	COUNTY COOK	TOTAL SHEETS 112	SHEET NO. 47
PLOT SCALE = 20.0000' / IN.	CHECKED - DJK	REVISED -	SCALE: 1"=20'					SHEET NO. 10 OF 11 SHEETS	STA. 207+50 TO STA. 212+50	CONTRACT NO. 63383		
PLOT DATE = 11/25/2009	DATE - 11-23-09	REVISED -	FED. ROAD DIST. NO. 1   ILLINOIS FED. AID PROJECT M-8003(543)									