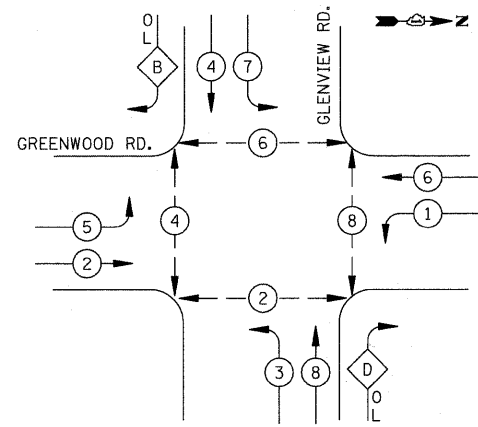
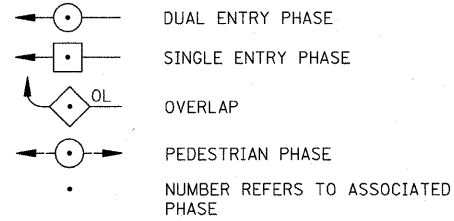


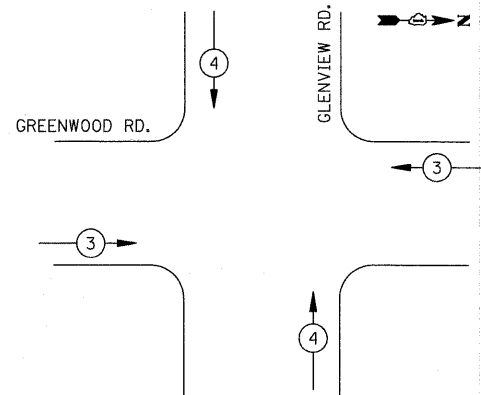
PROPOSED CONTROLLER SEQUENCE



LEGEND



PROPOSED EMERGENCY VEHICLE PREEMPTION SEQUENCE



EMERGENCY VEHICLE PREEMPTORS	
EMERGENCY VEHICLE PREEMPTOR	3 4
MOVEMENT	← → ↑ ↓

PHASE DESIGNATION DIAGRAM

RIGHT TURN OVERLAP PHASE DESIGNATION

OVERLAP LETTER	PERMISSIVE PHASE	PROTECTED PHASE
B	= 4	+ 5
D	= 8	+ 1

SCHEDULE OF QUANTITIES

PAY ITEM	UNIT	QUANTITY
SIGN PANEL - TYPE 1	SQ. FT.	33
CONDUIT IN TRENCH, 2" DIA., GALVANIZED STEEL	FOOT	480
CONDUIT IN TRENCH, 2 1/2" DIA., GALVANIZED STEEL	FOOT	29
CONDUIT IN TRENCH, 3" DIA., GALVANIZED STEEL	FOOT	48
CONDUIT IN TRENCH, 4" DIA., GALVANIZED STEEL	FOOT	20
CONDUIT PUSHED, 2" DIA., GALVANIZED STEEL	FOOT	426
CONDUIT PUSHED, 2 1/2" DIA., GALVANIZED STEEL	FOOT	17
CONDUIT PUSHED, 3" DIA., GALVANIZED STEEL	FOOT	6
CONDUIT PUSHED, 4" DIA., GALVANIZED STEEL	FOOT	405
HANDHOLE	EACH	4
HEAVY-DUTY HANDHOLE	EACH	4
DOUBLE HANDHOLE	EACH	2
TRENCH AND BACKFILL FOR ELECTRICAL WORK	FOOT	562
FULL-ACTUATED CONTROLLER AND TYPE IV CABINET	EACH	1
ELECTRIC CABLE IN CONDUIT, SIGNAL NO. 14 2C	FOOT	1256
ELECTRIC CABLE IN CONDUIT, SIGNAL NO. 14 3C	FOOT	1619
ELECTRIC CABLE IN CONDUIT, SIGNAL NO. 14 5C	FOOT	793
ELECTRIC CABLE IN CONDUIT, SIGNAL NO. 14 7C	FOOT	2127
ELECTRIC CABLE IN CONDUIT, LEAD-IN, NO. 14 1 PAIR	FOOT	1928
ELECTRIC CABLE IN CONDUIT, SERVICE, NO. 6 2C	FOOT	150
TRAFFIC SIGNAL POST, GALVANIZED STEEL 16 FT.	EACH	4
STEEL MAST ARM ASSEMBLY AND POLE, 40 FT.	EACH	1
STEEL MAST ARM ASSEMBLY AND POLE, 42 FT.	EACH	1
STEEL MAST ARM ASSEMBLY AND POLE, 44 FT.	EACH	2
CONCRETE FOUNDATION, TYPE A	FOOT	16
CONCRETE FOUNDATION, TYPE C	FOOT	4
CONCRETE FOUNDATION, TYPE E 36-INCH DIAMETER	FOOT	52
SIGNAL HEAD, L.E.D., 1-FACE, 3-SECTION, MAST ARM MOUNTED	EACH	4
SIGNAL HEAD, L.E.D., 1-FACE, 5-SECTION, BRACKET MOUNTED	EACH	2
SIGNAL HEAD, L.E.D., 1-FACE, 5-SECTION, MAST ARM MOUNTED	EACH	6
SIGNAL HEAD, L.E.D., 2-FACE, 5-SECTION, BRACKET MOUNTED	EACH	2
PEDESTRIAN SIGNAL HEAD, L.E.D., 1-FACE, BRACKET MOUNTED WITH COUNTDOWN TIMER	EACH	8
TRAFFIC SIGNAL BACKPLATE, LOUVERED, ALUMINUM	EACH	10
INDUCTIVE LOOP DETECTOR	EACH	10
DETECTOR LOOP, TYPE I	FOOT	1265
* LIGHT DETECTOR	EACH	2
* LIGHT DETECTOR AMPLIFIER	EACH	1
PEDESTRIAN PUSH-BUTTON	EACH	8
TEMPORARY TRAFFIC SIGNAL INSTALLATION	EACH	1
REMOVE EXISTING TRAFFIC SIGNAL EQUIPMENT	EACH	1
REMOVE EXISTING HANDHOLE	EACH	11
REMOVE EXISTING CONCRETE FOUNDATION	EACH	12
TEMPORARY TRAFFIC SIGNAL TIMING	EACH	1
SERVICE INSTALLATION, POLE MOUNT	EACH	1
UNINTERRUPTIBLE POWER SUPPLY	EACH	1
ELECTRIC CABLE IN CONDUIT, GROUNDING, NO. 6 1C	FOOT	842
* ELECTRIC CABLE IN CONDUIT NO. 20 3C, TWISTED, SHIELDED	FOOT	307

* 100% COST TO VILLAGE OF GLENVIEW

I.D.O.T. TRAFFIC SIGNAL INSTALLATION ELECTRICAL SERVICE REQUIREMENTS					TOTAL WATTAGE
TYPE	NO. LAMPS	WATTAGE		OPERATION	
SIGNAL (RED)	16	INCAND.	17	0.50	136
(YELLOW)	16		25	0.25	100
(GREEN)	16		15	0.25	60
ARROW	24		12	0.10	29
PED. SIGNAL	8		25	1.00	200
CONTROLLER	1		100	1.00	100
FLASHER				0.50	
TOTAL =					625

ENERGY COSTS TO: ILLINOIS DEPARTMENT OF TRANSPORTATION
201 WEST CENTER COURT
SCHAUMBURG, IL 60196-1096
CONTACT: MAUREEN RAYE
PHONE: (847) 816-5492
COMPANY: COM ED

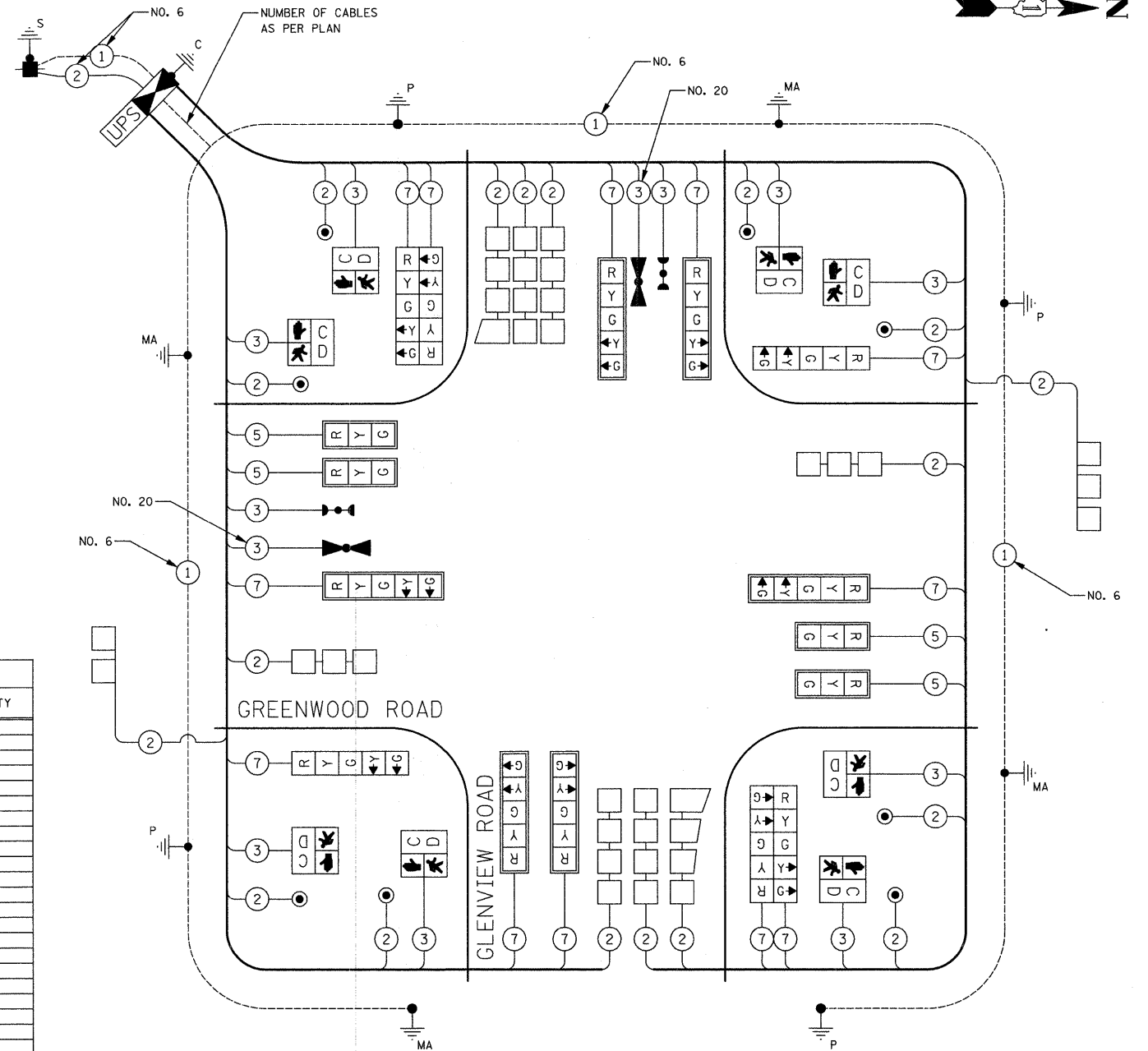
FILE NAME = J:\2275\Cad\Sheet\Signal\2275_Cable_Plan.dgn	USER NAME = djk	DESIGNED - BRD	REVISED -
		DRAWN - JRT	REVISED -
		CHECKED - JJE	REVISED -
		DATE - 11/23/09	REVISED -

STATE OF ILLINOIS
DEPARTMENT OF TRANSPORTATION

CABLE PLAN, EMERGENCY VEHICLE PREEMPTION SEQUENCE,
PHASE DESIGNATION DIAGRAM & SCHEDULE OF QUANTITIES
GREENWOOD ROAD AT GLENVIEW ROAD

SCALE: NO SCALE SHEET NO. 1 OF 1 SHEETS STA. TO STA.

F.A.U. RTE. 2743	SECTION 05-00161-00-CH	COUNTY COOK	TOTAL SHEETS 112	SHEET NO. 62
CONTRACT NO. 63383				



CABLE PLAN
NOT TO SCALE