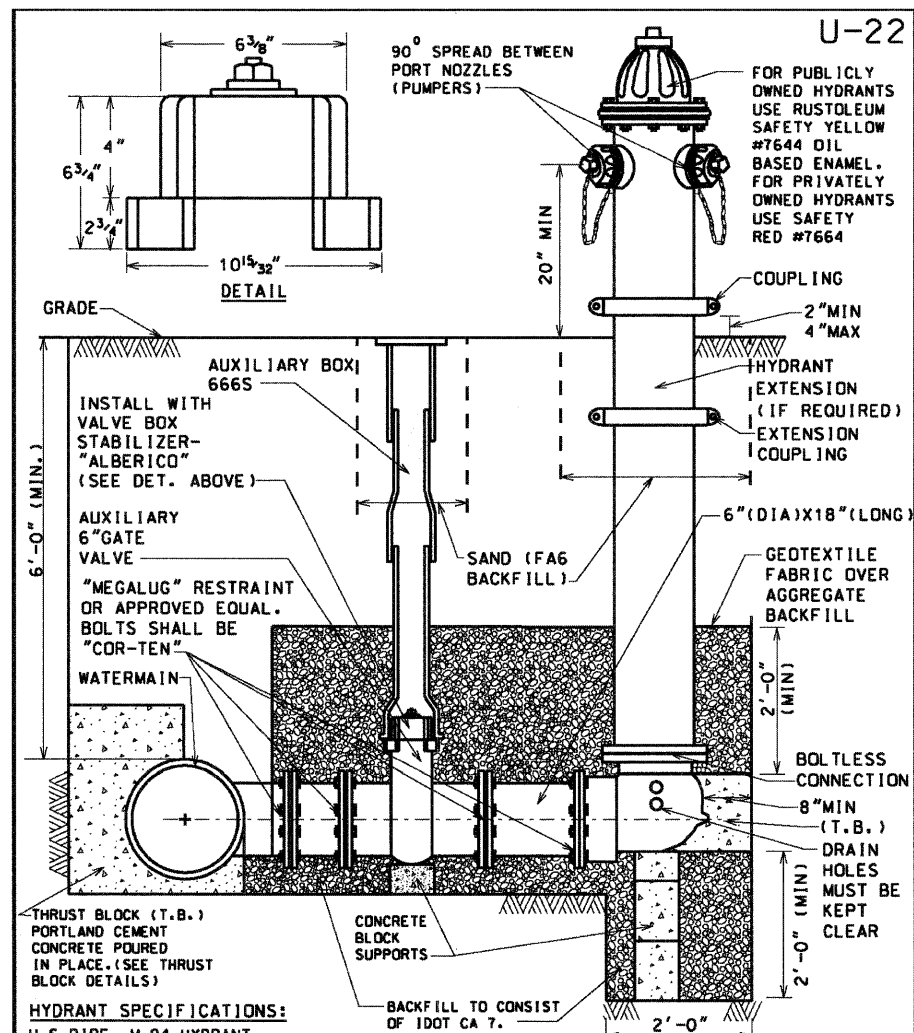


NOTES:

- HORIZONTAL AND VERTICAL SEPARATION BETWEEN WATERMAINS AND SEWERS SHALL COMPLY WITH VILLAGE OF GLENVIEW ENGINEERING STANDARDS MANUAL OR IEPA REQUIREMENTS, WHICHEVER IS MORE STRINGENT.
- CONTRACTOR MAY BEND WATER MAIN PIPE UNIFORMLY UNDER SEWERS WITHOUT USING FITTINGS, PROVIDED THAT JOINT DEFLECTION DOES NOT EXCEED 5 DEGREES PER JOINT FOR PIPE UNDER 14" IN DIAMETER AND 3 DEGREES PER JOINT FOR PIPE 14" AND OVER IN DIAMETER. IF FITTINGS ARE USED, CONTINUOUS STRAPPING WITH RODS, STRAPS, NUTS AND BOLTS BELOW NORMAL WATERMAIN DEPTH ARE REQUIRED, OR RETAINER GLANDS MAY BE USED IN LIEU OF STRAPPING. RETAINER GLANDS TO BE "MEGALUG" RESTRAINT, SERIES 1100 OR APPROVED EQUAL WITH "COR TEN" BOLTS.
- ALL SANITARY SEWER (INCLUDING SERVICE) CROSSINGS WHERE THE WATER MAINS OR WATER SERVICES ARE LESS THAN 18" VERTICALLY ABOVE THE SEWER SHALL BE POLYVINYL CHLORIDE PRESSURE PIPE (SDR 26-160 PSI) AND SHALL CONFORM WITH THE LATEST REVISION OF ASTM D- 2241. JOINTS SHALL CONFORM TO ASTM D-3139 AND ELASTOMERIC GASKETS SHALL CONFORM TO ASTM F-477. THE SAME PIPE AND JOINT MATERIALS SHALL BE USED WHENEVER WATER MAIN CROSSES BELOW THE SEWER.
- ALL STORM SEWER (INCLUDING SERVICE) CROSSINGS WHERE THE WATER MAINS ARE LESS THAN 18" VERTICALLY ABOVE THE SEWER SHALL BE REINFORCED CONCRETE PIPE, ASTM C-361, CLASS D-25, WITH BELL AND SPIGOT JOINTS AND RUBBER GASKETS, OR PVC SDR 26 AS SPECIFIED IN NOTE 3 ABOVE. THE SAME PIPE AND JOINT MATERIAL SHALL BE USED WHENEVER WATER MAIN CROSSES BELOW THE SEWER.
- FOR NEW SEWER INSTALLATIONS CROSSING OVER WATER MAINS, THE ENTIRE RUN OF NEW SEWER SHALL BE WATER MAIN QUALITY PIPE, EXTENDING FROM STRUCTURE TO STRUCTURE ON EACH SIDE OF THE CROSSING.

NOT TO SCALE
WATER MAIN CROSSING DETAIL

REVISED:01-01-09



HYDRANT SPECIFICATIONS:

U.S. PIPE, M-94 HYDRANT
ALL HYDRANTS TO HAVE DOUBLE STEAMERS-2 4 1/2" P.N..N.S.T., MECHANICAL JOINT SHOE WITH 6" RESILIENT WEDGE AUXILIARY VALVE. MAIN VALVE OPENING SHALL BE 5 1/4". ONLY AUXILIARY BOX EXTENSIONS ARE PERMITTED. AUXILIARY BOX ADAPTERS OR RISERS ARE NOT PERMITTED. HYDRANT BARREL SHALL BE ONE PIECE DUCTILE IRON PIPE. POLY-WRAPPED (AS WATER MAIN) TO HYDRANT BASE. HYDRANT LEADS TO BE 6" DIAMETER UP TO 25' LONG AND 8" DIAMETER IF GREATER THAN 25'. ALL PARTS OF AUXILIARY BOX INCLUDING THE COVER SHALL BE MADE OF CAST IRON.

NOT TO SCALE
HYDRANT DETAIL

REVISED:01-01-09

FILE NAME = J:\2275\Cad\Sheet\2275_DET_09.dgn	USER NAME = djr	DESIGNED - JAT	REVISED -	STATE OF ILLINOIS DEPARTMENT OF TRANSPORTATION	VILLAGE OF GLENVIEW CONSTRUCTION DETAILS	F.A.U. RTE. 2743	SECTION 05-00161-00-CH	COUNTY COOK	TOTAL SHEETS 112	SHEET NO. 87	
PLOT SCALE = 50.0000' / IN.	DRAWN - JAT	CHECKED - DJK	REVISED -			SHEET NO. 6 OF 9 SHEETS		CONTRACT NO. 63383			
PLOT DATE = 11/20/2009	DATE - 11-23-09	REVISED -	REVISED -			FED. ROAD DIST. NO. 1 ILLINOIS FED. AID PROJECT M-8003(543)					