

F.A.P. RTE.	SECTION	COUNTY	TOTAL SHEETS	SHEET NO.
351	09-00063-00-SW	WILL	41	1
		ILLINOIS	CONTRACT NO. 63438	

STATE OF ILLINOIS
DEPARTMENT OF TRANSPORTATION
DIVISION OF HIGHWAYS

PLANS FOR PROPOSED
FEDERAL AID HIGHWAY

FOR INDEX OF SHEETS, SEE SHEET NO. 2

TRAFFIC DATA

ADT:

IL RTE 7, MADISON STREET TO
7TH STREET = 15,300 (2007)

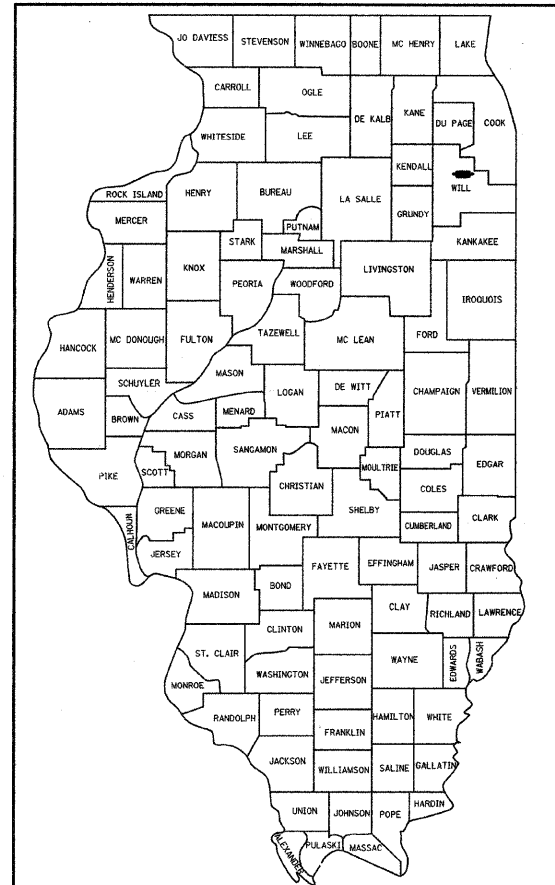
IL RTE 7, 7TH STREET TO
THORNTON STREET = 13,900 (2007)

IL RTE 7, THORNTON STREET TO
FARRELL ROAD = 15,100 (2007)

SPEED LIMIT:

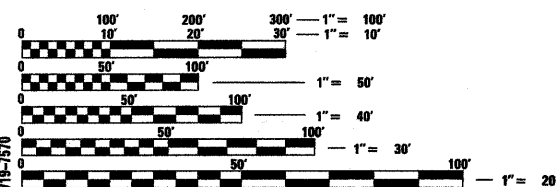
IL ROUTE 7 = 35 MPH (POSTED)

F.A.P. ROUTE 351 (IL ROUTE 7)
FROM LINCOLN STREET TO FARRELL ROAD
SECTION: 09-00063-00-SW
SIDEWALK CONSTRUCTION
PROJECT: CMM-9003(259)
CITY OF LOCKPORT
WILL COUNTY
C-91-381-09



LOCATION OF SECTION INDICATED THUS: - ■ -

PROJECT LOCATED IN
CITY OF LOCKPORT

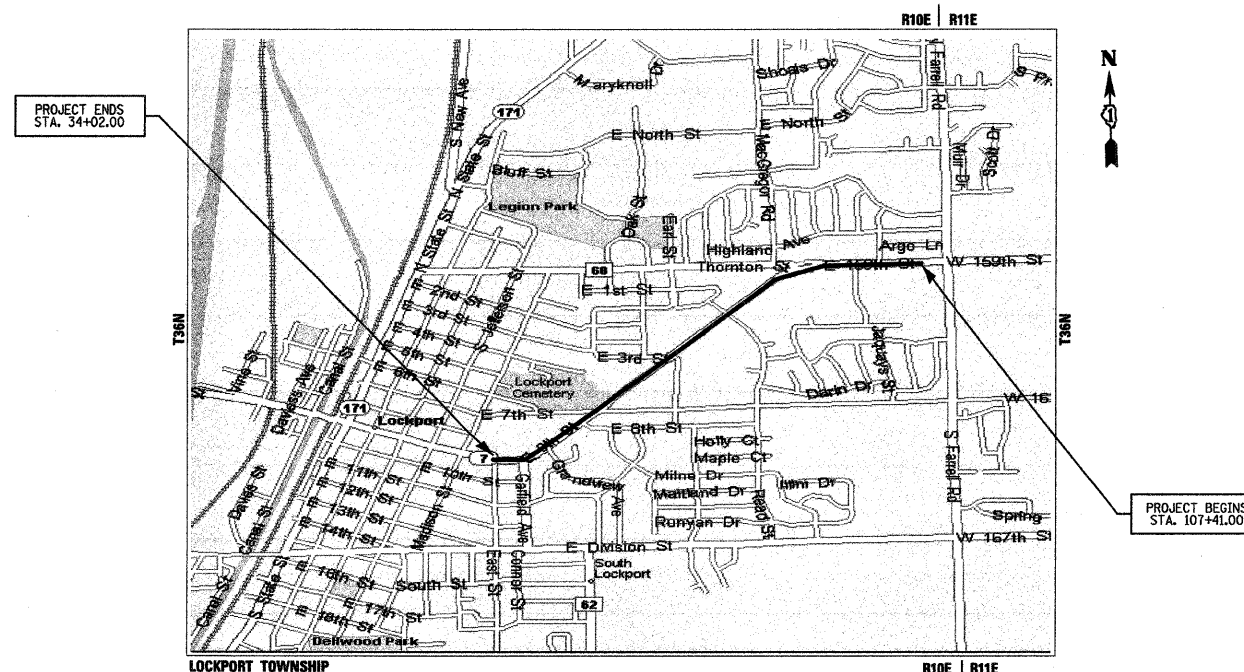


FULL SIZE PLANS HAVE BEEN PREPARED USING STANDARD
ENGINEERING SCALES. REDUCED SIZED PLANS WILL NOT
CONFORM TO STANDARD SCALES. IN MAKING MEASUREMENTS
ON REDUCED PLANS, THE ABOVE SCALES MAY BE USED.

J.U.L.I.E.
JOINT UTILITY LOCATION INFORMATION FOR EXCAVATION
1-800-892-0123
OR 811

CONTRACT NO. 63438
DESIGN DESIGNATION: PRINCIPAL ARTERIAL

FIELD ENGINEER: MELCHOR MANGOBA (847) 705-4408
CONSULTANT: JAMES J. BENES & ASSOCIATES, INC. (630) 719-7570



PROJECT ENDS
STA. 34+02.00

PROJECT BEGINS
STA. 107+41.00

LOCATION MAP
SCALE: NTS
GROSS & NET LENGTH OF PROJECT: 7,339 FT. (1.39 MILES)

STATE OF ILLINOIS
DEPARTMENT OF TRANSPORTATION
DIVISION OF HIGHWAYS

APPROVED: January 19 2010
[Signature]
City of Lockport, City Engineer

PASSED: January 29 2010
[Signature]
District 1 Engineer of Local Roads & Streets

Releasing for Bid
Based on Limited
Review FEBRUARY 1, 2010
[Signature]
Deputy Director of Highways, Region 1 Engineer

PRINTED BY AUTHORITY OF THE STATE OF ILLINOIS

JAMES J. BENES & ASSOCIATES, INC.

JAMES J. BENES & ASSOCIATES
CONSULTING ENGINEERS
950 WARRENVILLE ROAD, SUITE 101
LISLE, IL 60532
(630) 719-7570
SIGNATURE: *[Signature]*
DATE: 1/19/2010
IL LICENSE NO: 062-034438
EXP. DATE: NOVEMBER 30, 2011
FIELD: JAMES J. BENES AND ASSOCIATES, INC.
CIVIL ENGINEERING