

STATE OF ILLINOIS  
 DEPARTMENT OF TRANSPORTATION  
 DIVISION OF HIGHWAYS

**PROPOSED  
 HIGHWAY PLANS**

VARIOUS ROUTES  
 SECTION D5 CRACK & JOINT SEAL 2010-1

CRACK & JOINT SEALING  
 MCLEAN & PIATT COUNTIES

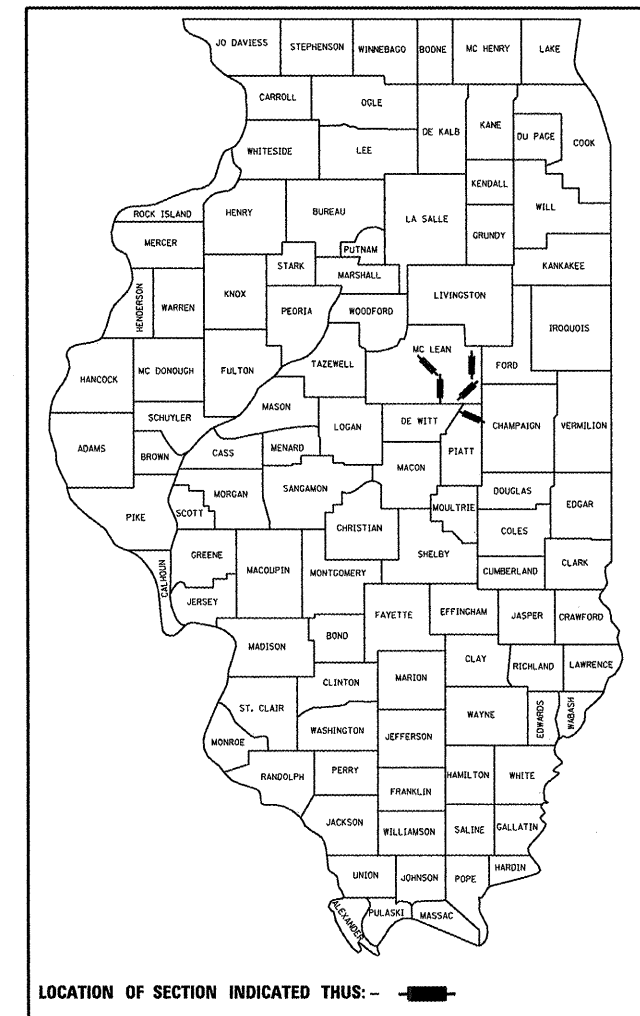
C-95-064-09

F.A. RTE.	SECTION	COUNTY	TOTAL SHEETS	SHEET NO.
VAR.	*	**	20	1
		ILLINOIS	CONTRACT NO. 70829	

\*05 CRACK & JOINT SEAL 2010-1  
 \*\*MCLEAN & PIATT

D-95-064-09

FOR INDEX OF SHEETS, SEE SHEET NO. 2  
 FOR SUMMARY OF QUANTITIES, SEE SHEET NO. 7

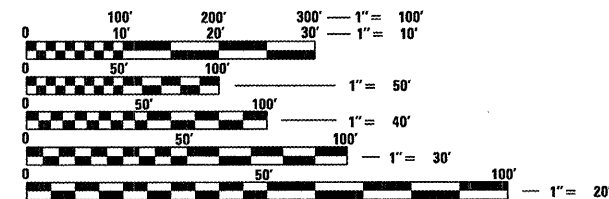


**CURRENT ADT**

LOCATION #1	1,000 (2009)
LOCATION #2	19,500 (2009)
LOCATION #3	5,700 (2009)
LOCATION #4	1,600 (2009)
LOCATION #5	5,000 (2009)

**DESIGN DESIGNATION**

N/A



FULL SIZE PLANS HAVE BEEN PREPARED USING STANDARD ENGINEERING SCALES. REDUCED SIZED PLANS WILL NOT CONFORM TO STANDARD SCALES. IN MAKING MEASUREMENTS ON REDUCED PLANS, THE ABOVE SCALES MAY BE USED.

J.U.L.I.E.  
 JOINT UTILITY LOCATION INFORMATION FOR EXCAVATION  
 1-800-892-0123  
 OR 811

PROJECT ENGINEER: JASON STULTS  
 SQUAD LEADER: GREG EAGLIN  
 DESIGNER: GARRY ROSS  
 217-465-4181  
 CONTRACT NO. 70829

TOWNSHIPS:  
 BELLFLOWER  
 BLUE RIDGE  
 EMPIRE  
 CHENNEYS GROVE  
 DOWNS, EMPIRE

FOR LOCATION MAPS, SEE SHEETS NO. 3 - 5

FOR TOTAL & NET LENGTHS, SEE SHEETS NO. 3 - 5

STATE OF ILLINOIS  
 DEPARTMENT OF TRANSPORTATION  
 DIVISION OF HIGHWAYS

SUBMITTED 1/18 20 10  
Jason M. Coover  
 DEPUTY DIRECTOR OF HIGHWAYS, REGION ENGINEER

March 19, 2010  
Scott E. Still, P.E.  
 ENGINEER OF DESIGN AND ENVIRONMENT

March 19, 2010  
Christine M. Reed  
 DIRECTOR OF HIGHWAYS/CHIEF ENGINEER

**PRINTED BY THE AUTHORITY  
 OF THE STATE OF ILLINOIS**