

| | | | | |
|---------------------|------------------|--------------|--------------|-----------|
| F.A.P. R.T.E. | SECTION | COUNTY | TOTAL SHEETS | SHEET NO. |
| 344 | (46-1S&47) WRS-3 | LAKE | 176 | 1 |
| FED. ROAD DIST. NO. | ILLINOIS | CONTRACT NO. | 60957 | |

D-91-209-00
CONTRACT NO. 60957

FOR INDEX OF SHEETS, SEE SHEET NO. 2

PROJECT LOCATED IN THE VILLAGE OF GRAYSLAKE, AVON TOWNSHIP, FREEMONT TOWNSHIP, LIBERTYVILLE TOWNSHIP AND WARREN TOWNSHIP

TRAFFIC DATA
POSTED SPEED: 45 MPH
DESIGN SPEED: 50 MPH
CURRENT ADT (2007): 24,400
DESIGN ADT (2030): 48,150

DESIGN DESIGNATION
MAJOR ARTERIAL

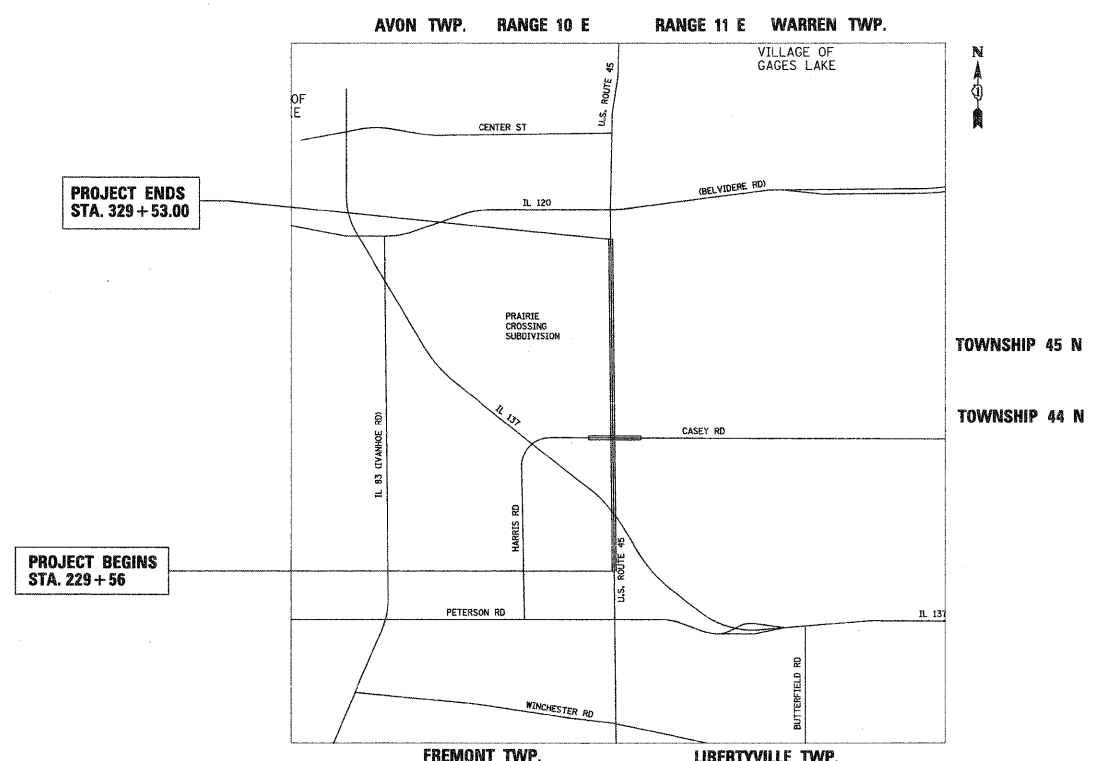
STATE OF ILLINOIS
DEPARTMENT OF TRANSPORTATION
DIVISION OF HIGHWAYS

PROPOSED
HIGHWAY PLANS

FAP ROUTE 344 — U.S. ROUTE 45
Section No.: (46-1S&47)WRS-3
ILLINOIS ROUTE 137 (BUCKLEY RD)
TO SOUTH OF ILLINOIS ROUTE 120 (BELVIDERE ROAD)
ROADWAY RECONSTRUCTION AND RESURFACING
TRAFFIC SIGNAL MODERNIZATION

Project No.: F-0344 (049)

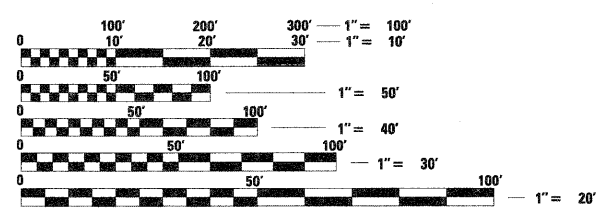
LAKE COUNTY
C-91-209-00



LOCATION MAP

SCALE: 1" = 2500'

PROJECT GROSS AND NET LENGTH (U.S. ROUTE 45) = 9,997 FT (1.89 MILES)

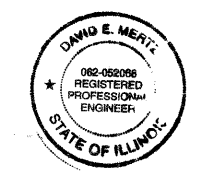


FULL SIZE PLANS HAVE BEEN PREPARED USING STANDARD ENGINEERING SCALES. REDUCED SIZED PLANS WILL NOT CONFORM TO STANDARD SCALES. IN MAKING MEASUREMENTS ON REDUCED PLANS, THE ABOVE SCALES MAY BE USED.

J.U.L.I.E.
JOINT UTILITY LOCATION INFORMATION FOR EXCAVATION
1-800-892-0123
OR 811



SIGNED: *Matthew A. Papirnik*
 DATE: 12/12/2008
 EXPIRES: Nov 30 2009
 FOR DRAWINGS: ALL BUT PAGE BELOW



SIGNED: *David E. Mertz*
 DATE: 12 DECEMBER 2008
 EXPIRES: 30 November 2009
 FOR DRAWINGS: 106 to 116

STATE OF ILLINOIS
 DEPARTMENT OF TRANSPORTATION
 DIVISION OF HIGHWAYS

SUBMITTED JANUARY 9, 2009

Diana M. O'Keefe
 DEPUTY DIRECTOR OF HIGHWAYS, REGION ONE ENGINEER

January 30, 2009
Charles J. Ingersoll
 ENGINEER OF DESIGN AND ENVIRONMENT

January 30, 2009
Christine M. Reed
 DIRECTOR OF HIGHWAYS, CHIEF ENGINEER

PRINTED BY THE AUTHORITY OF THE STATE OF ILLINOIS

CONTRACT NO. 60957

IDOT PROJECT MANAGER -- BRIAN KUTTAB (847) 705-4431 (DISTRICT 1)