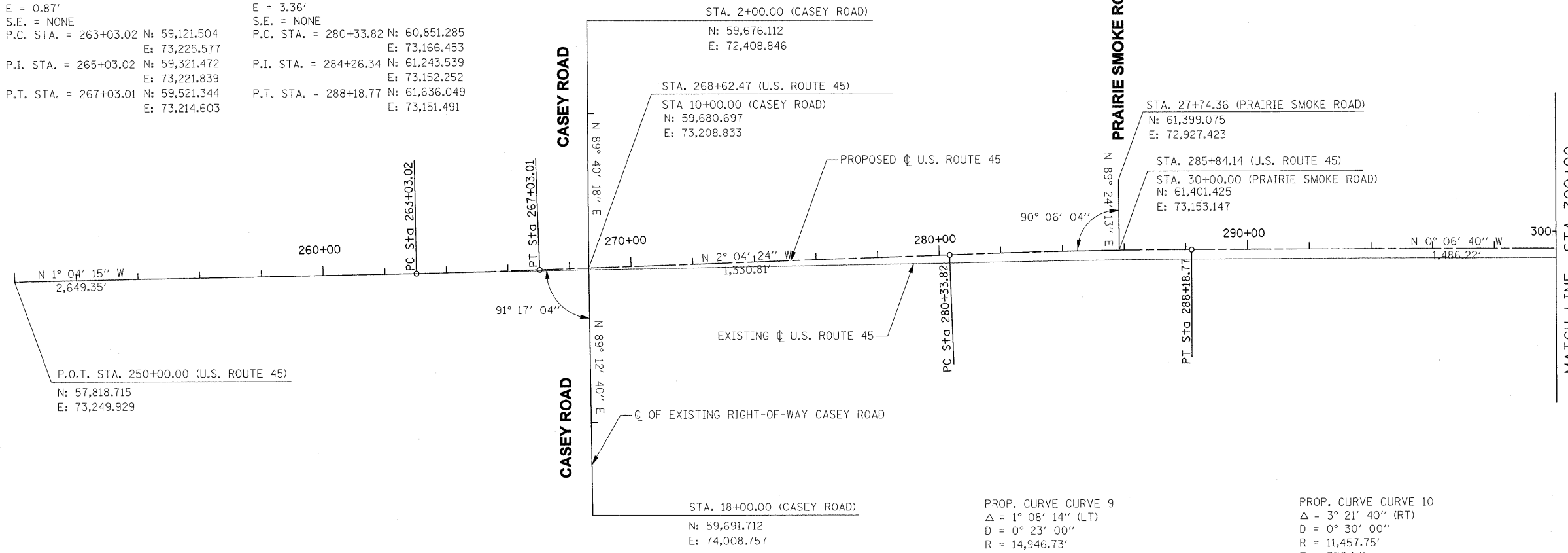
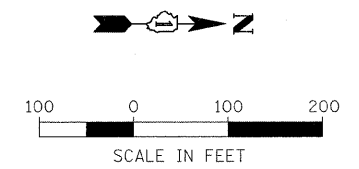
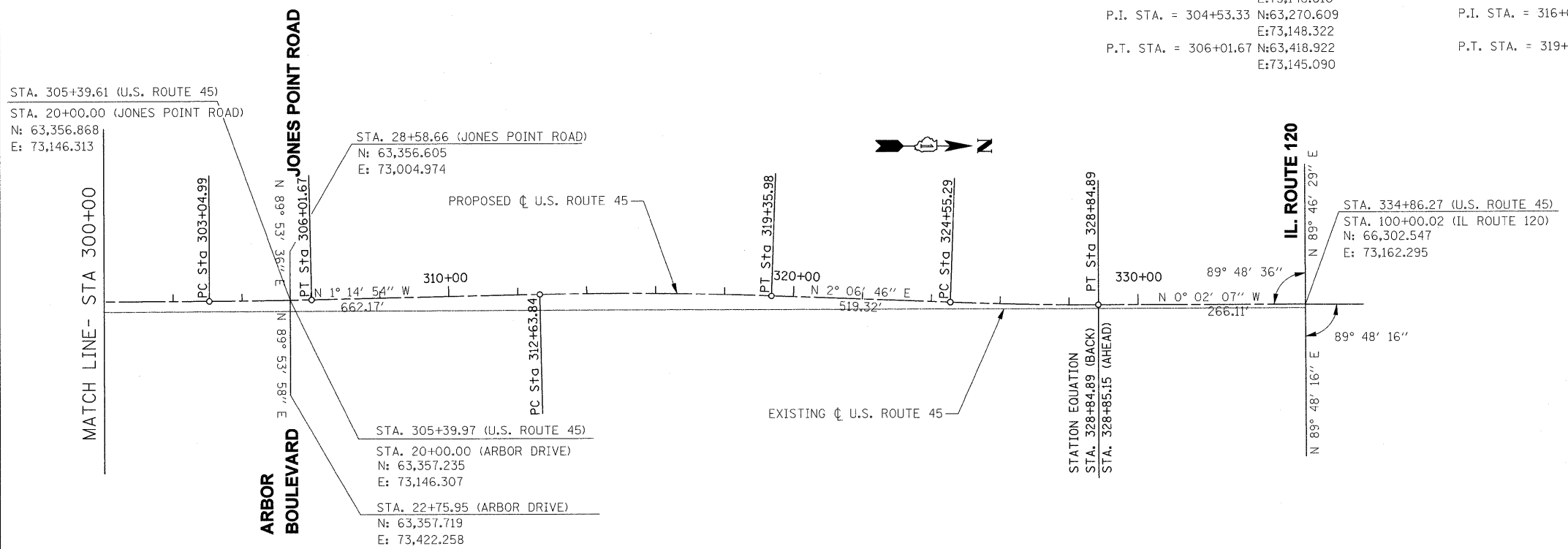


PROP. CURVE CURVE 7  
 $\Delta = 1^\circ 00' 09''$  (LT)  
 $D = 0^\circ 15' 02''$   
 $R = 22,858.87'$   
 $T = 200.00'$   
 $L = 400.00'$   
 $E = 0.87'$   
 $S.E. = \text{NONE}$   
P.C. STA. = 263+03.02 N: 59,121.504  
E: 73,225.577  
P.I. STA. = 265+03.02 N: 59,321.472  
E: 73,221.839  
P.T. STA. = 267+03.01 N: 59,521.344  
E: 73,214.603

PROP. CURVE CURVE 8  
 $\Delta = 1^\circ 57' 45''$  (RT)  
 $D = 0^\circ 15' 00''$   
 $R = 22,918.31'$   
 $T = 392.51'$   
 $L = 784.95'$   
 $E = 3.36'$   
 $S.E. = \text{NONE}$   
P.C. STA. = 280+33.82 N: 60,851.285  
E: 73,166.453  
P.I. STA. = 284+26.34 N: 61,243.539  
E: 73,152.252  
P.T. STA. = 288+18.77 N: 61,636.049  
E: 73,151.491



NOTE: GROUND COORDINATES ARE DERIVED FROM IL EAST STATE PLANE COORDINATES BY FIRST DIVIDING BY A SCALE FACTOR OF 0.9999519046, THEN TRANSLATING THE NORTHING AND EASTING BY -2,000,000 AND -1,000,000 RESPECTIVELY.



BM#	NORTHING	EASTING	ELEVATION	DESCRIPTION
45-1	57762.0	73126.4	784.688	CHISELED "□" ON THE SE SIDE OF CANTILEVER SIGN FOUNDATION @ THE NW CORNER OF US 45 & IL 137.
45-2	61437.1	73081.4	808.867	CHISELED "□" ON THE NE SIDE OF LIGHT POLE FOUNDATION @ THE NE CORNER OF PRAIRIE SMOKE RD & US 45.
45-3	63392.9	73241.1	814.274	CHISELED "□" ON TOP OF STONE WALL + MID POINT OF WALL @ THE NE CORNER OF ARBOR BLVD & US 45.
45-4	64764.1	73213.6	804.103	CHISELED "□" ON CONCRETE HEADWALL (NEW), + CENTER OF HEADWALL. E. SIDE OF US 45, S. OF IL 120.
45-5	66237.3	73237.3	814.922	CHISELED "□" ON W SIDE OF CONC FOUNDATION FOR MAST ARM TRAFFIC SIGNAL, ON THE SE CORNER OF IL 120 & US 45.