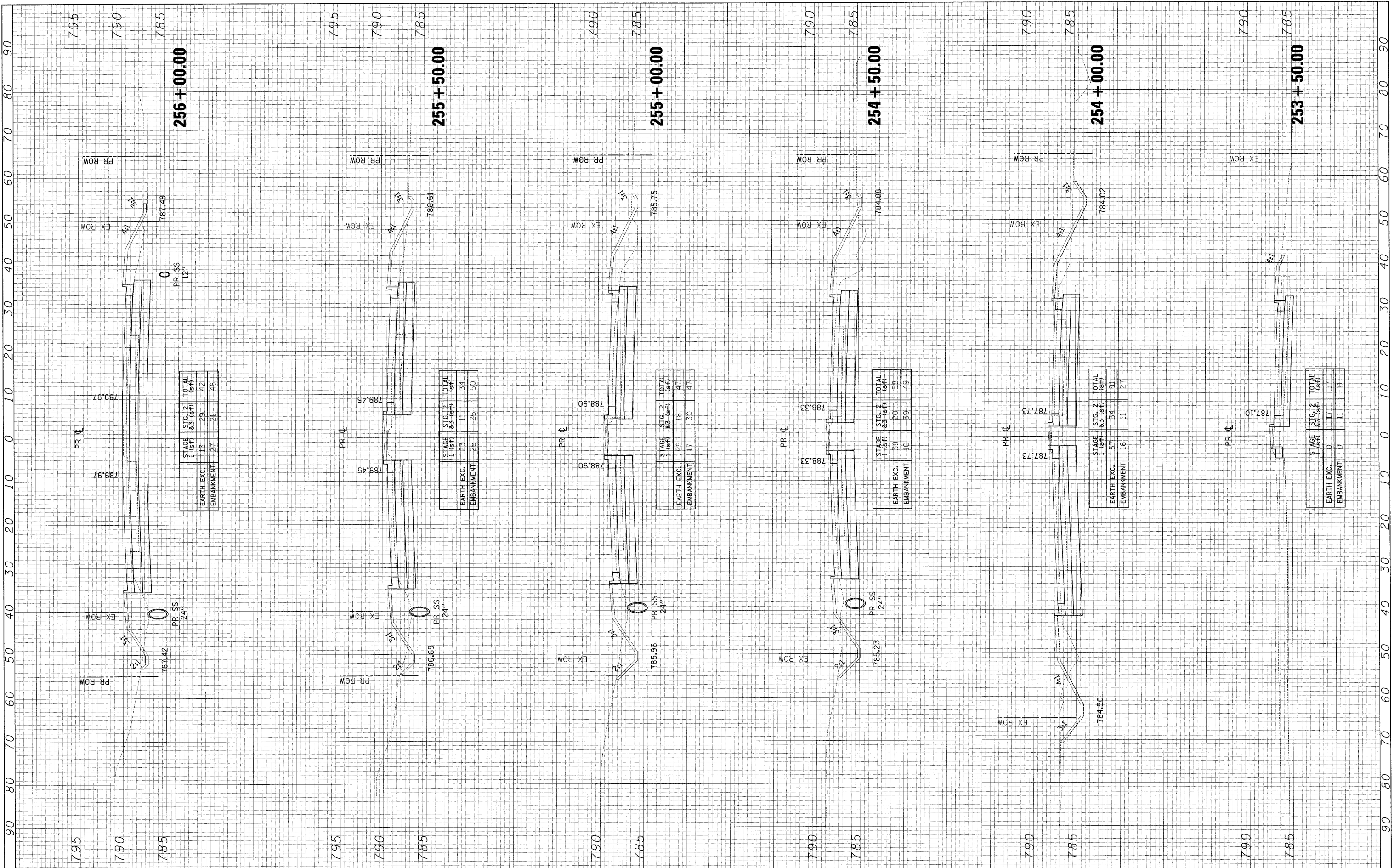


FINAL SURVEY SURVIVED PLOTTED NOTE BOOK NO. BY DATE

ORIGINAL SURVEY SURVIVED PLOTTED NOTE BOOK NO. BY DATE



	STG. 1 (sf)	STG. 2 & 3 (sf)	TOTAL (sf)
EARTH EXC.	13	29	42
EMBANKMENT	27	21	48

	STG. 1 (sf)	STG. 2 & 3 (sf)	TOTAL (sf)
EARTH EXC.	23	11	34
EMBANKMENT	25	25	50

	STG. 1 (sf)	STG. 2 & 3 (sf)	TOTAL (sf)
EARTH EXC.	29	18	47
EMBANKMENT	17	30	47

	STG. 1 (sf)	STG. 2 & 3 (sf)	TOTAL (sf)
EARTH EXC.	38	20	58
EMBANKMENT	10	39	49

	STG. 1 (sf)	STG. 2 & 3 (sf)	TOTAL (sf)
EARTH EXC.	57	34	91
EMBANKMENT	16	11	27

	STG. 1 (sf)	STG. 2 & 3 (sf)	TOTAL (sf)
EARTH EXC.	0	17	17
EMBANKMENT	0	11	11

FILE NAME = #FILE#

USER NAME = #USER#
 PLOT SCALE = #SCALE#
 PLOT DATE = #DATE#

DESIGNED -
 DRAWN -
 CHECKED -
 DATE -

REVISED -
 REVISED -
 REVISED -
 REVISED -

**STATE OF ILLINOIS
 DEPARTMENT OF TRANSPORTATION**

U.S. ROUTE 45 CROSS SECTIONS

SCALE: 1"=5'V/10'H SHEET NO. 2 OF 36 SHEETS STA. 253+50.00 TO STA. 256+00.00

F.A.P. RTE.	SECTION	COUNTY	TOTAL SHEETS	SHEET NO.
344	(46-1S&47)WRS-3	LAKE	176	136
U.S. ROUTE 45 RECONSTRUCTION			CONTRACT NO. 60957	
FED. ROAD DIST. NO.		ILLINOIS FED. AID PROJECT		