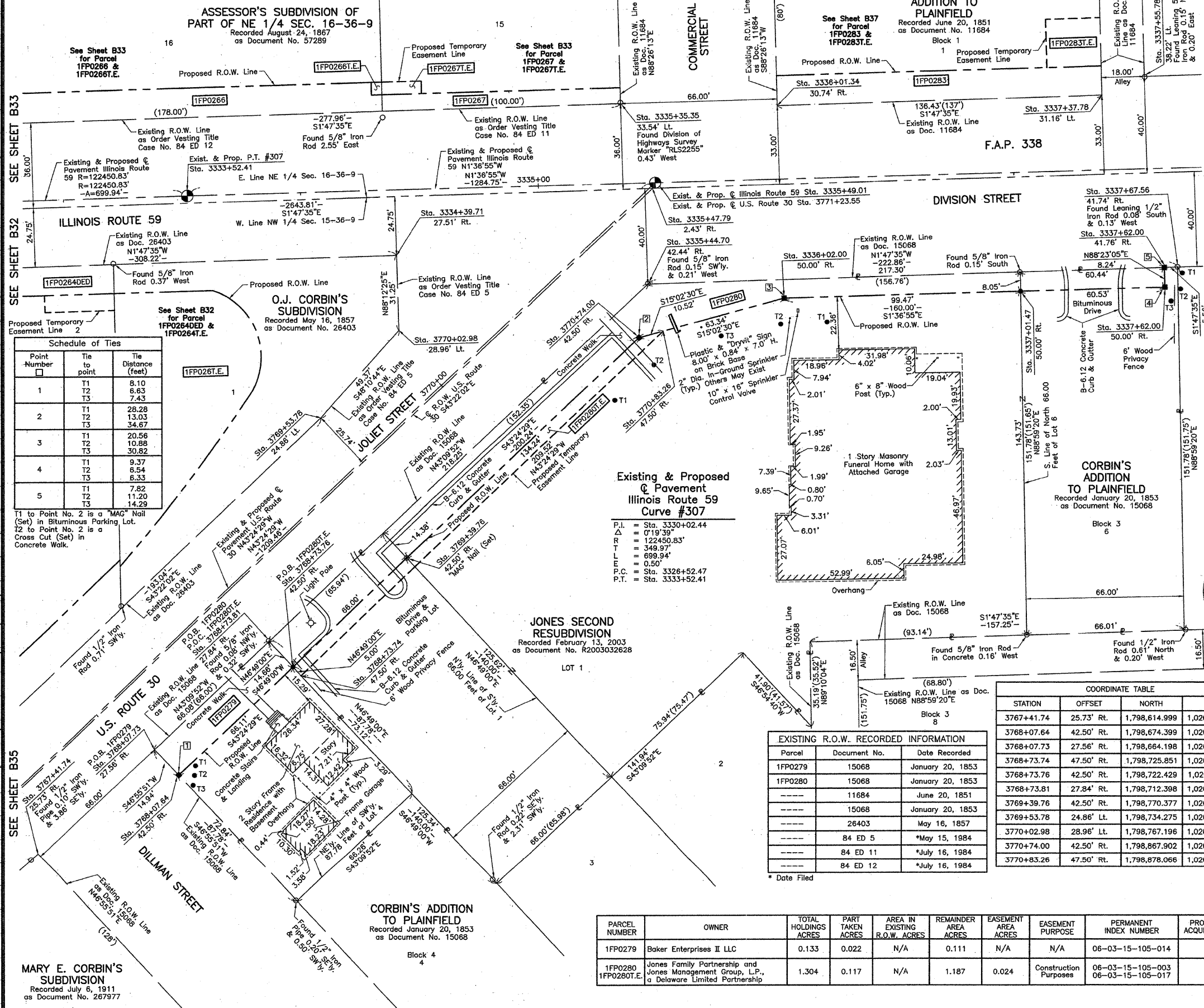


PART OF THE NW 1/4 OF SEC. 15 AND PART OF THE NE 1/4 OF SEC. 16, TWP. 36 N., R. 9 E. OF THE 3RD. P.M., IN WILL COUNTY, ILLINOIS.

SCHREFFLER'S ADDITION TO PLAINFIELD
Recorded June 20, 1851
as Document No. 11684
Block 1

LEGEND

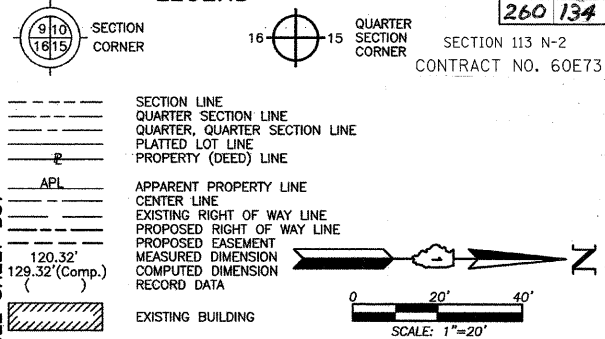
TOTAL SHEETS 260
SHEET NO. 134
SECTION 113 N-2
CONTRACT NO. 60E73



Schedule of Ties

Point Number	Tie to point	Tie Distance (feet)
1	T1	8.10
	T2	6.83
	T3	7.43
2	T1	28.28
	T2	13.03
	T3	34.67
3	T1	20.56
	T2	10.88
	T3	30.82
4	T1	9.37
	T2	6.54
	T3	6.33
5	T1	7.82
	T2	11.20
	T3	14.29

T1 to Point No. 2 is a "MAG" Nail (Set) in Bituminous Parking Lot.
T2 to Point No. 2 is a Cross Cut (Set) in Concrete Walk.

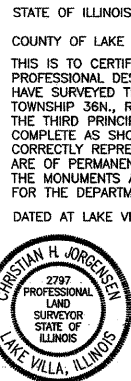


Bearings are referenced to the Illinois Coordinate System NAD83 (1997) East Zone as Found Geodetic Survey Control Monuments "Will County GPS 316", P.I.D. AE2551 and "Will County GPS 333", P.I.D. AE2553.

STATE OF ILLINOIS }
COUNTY OF LAKE } SS

THIS IS TO CERTIFY THAT WE, JORGENSEN & ASSOCIATES, INC., AN ILLINOIS PROFESSIONAL DESIGN FIRM LAND SURVEYING CORPORATION, NUMBER 184-2771, HAVE SURVEYED THE PLAT OF HIGHWAYS SHOWN HEREON BETWEEN SECTION 15, TOWNSHIP 36N., RANGE 9E. AND SECTION 16, TOWNSHIP 36N., RANGE 9E., OF THE THIRD PRINCIPAL MERIDIAN, WILL COUNTY, THAT THE SURVEY IS TRUE AND COMPLETE AS SHOWN TO THE BEST OF MY KNOWLEDGE AND BELIEF, THAT THE PLAT CORRECTLY REPRESENTS SAID SURVEY, THAT ALL MONUMENTS FOUND AND ESTABLISHED ARE OF PERMANENT QUALITY AND OCCUPY THE POSITIONS SHOWN THEREON AND THAT THE MONUMENTS ARE SUFFICIENT TO ENABLE THE SURVEY TO BE RETRACED. MADE FOR THE DEPARTMENT OF TRANSPORTATION, STATE OF ILLINOIS.

DATED AT LAKE VILLA, ILLINOIS THIS 23RD DAY OF September 2006 A.D.



NOTE: SURFACE COORDINATES ARE SHOWN.

EXISTING R.O.W. RECORDED INFORMATION

Parcel	Document No.	Date Recorded
1FP0279	15068	January 20, 1853
1FP0280	15068	January 20, 1853
---	11684	June 20, 1851
---	15068	January 20, 1853
---	26403	May 16, 1857
---	84 ED 5	*May 15, 1984
---	84 ED 11	*July 16, 1984
---	84 ED 12	*July 16, 1984

COORDINATE TABLE

STATION	OFFSET	NORTH	EAST
3334+39.71	27.51' Rt.	1,798,766.218	1,020,117.470
3335+35.35	33.54' Lt.	1,798,860.095	1,020,111.751
3335+44.70	42.44' Rt.	1,798,871.589	1,020,187.428
3335+47.79	2.43' Rt.	1,798,873.552	1,020,147.348
3336+01.34	30.74' Lt.	1,798,926.145	1,020,112.685
3336+02.00	50.00' Rt.	1,798,929.077	1,020,193.375
3337+01.47	50.00' Rt.	1,799,028.508	1,020,190.572
3337+37.78	31.16' Lt.	1,799,062.511	1,020,108.416
3337+55.78	38.22' Lt.	1,799,080.313	1,020,100.855
3337+62.00	41.76' Rt.	1,799,088.781	1,020,180.629
3337+62.00	50.00' Rt.	1,799,089.013	1,020,188.865
3337+67.56	41.74' Rt.	1,799,094.340	1,020,180.455

PLATS & LEGALS

PARCEL NUMBER	OWNER	TOTAL HOLDINGS ACRES	PART TAKEN ACRES	AREA IN EXISTING R.O.W. ACRES	REMAINDER AREA ACRES	EASEMENT AREA ACRES	EASEMENT PURPOSE	PERMANENT INDEX NUMBER	PROPERTY ACQUIRED BY
1FP0279	Baker Enterprises II LLC	0.133	0.022	N/A	0.111	N/A	N/A	06-03-15-105-014	RECEIVED JAN 8 2008
1FP0280	Jones Family Partnership and Jones Management Group, L.P., a Delaware Limited Partnership	1.304	0.117	N/A	1.187	0.024	Construction Purposes	06-03-15-105-003 06-03-15-105-017	RECEIVED JAN 8 2008

JORGENSEN & ASSOCIATES, INC.
120 PARK AVENUE
LAKE VILLA, ILLINOIS 60046
(847) 356-3371

SHEET 1 IS A COVER SHEET AND IS NOT RECORDED.

PLAT OF HIGHWAYS
STATE OF ILLINOIS
DEPARTMENT OF TRANSPORTATION
F.A.P. 338 (ILLINOIS ROUTE 59)
WILL COUNTY
JOB NO. R-91-067-01
STATION 3333+00 TO STATION 3338+00 (IL 59)
STATION 3767+00 TO STATION 3771+23.55 (US 30)
SCALE: 1"=20'
SHEET B36 OF B58

BUREAU OF LAND ACQUISITION
201 WEST CENTER COURT
SCHAUMBURG, ILLINOIS 60196