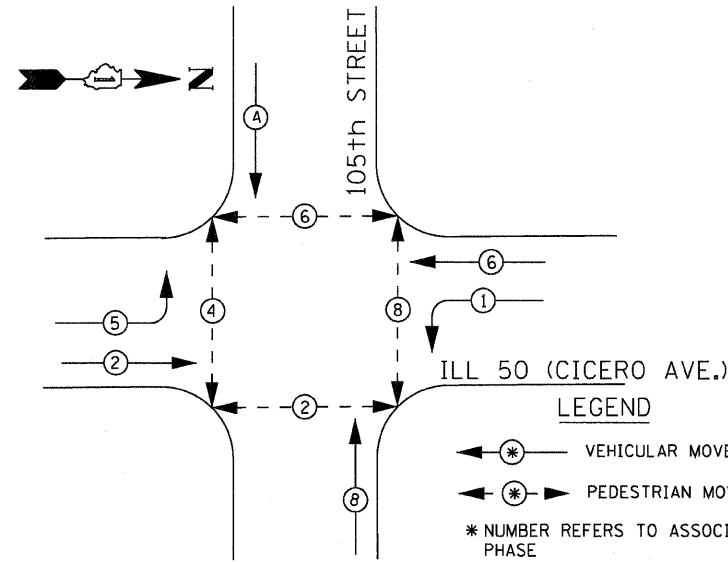
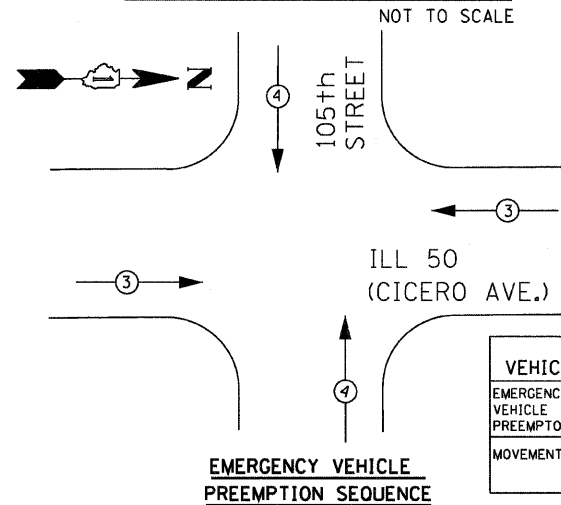


**CONTROLLER SEQUENCE IV**

REFERRING TO STANDARD 2393-1, THE VEHICULAR AND PEDESTRIAN PHASES USED DESIGNATED BELOW



**EXISTING & PROPOSED PHASE DESIGNATION DIAGRAM**  
NOT TO SCALE



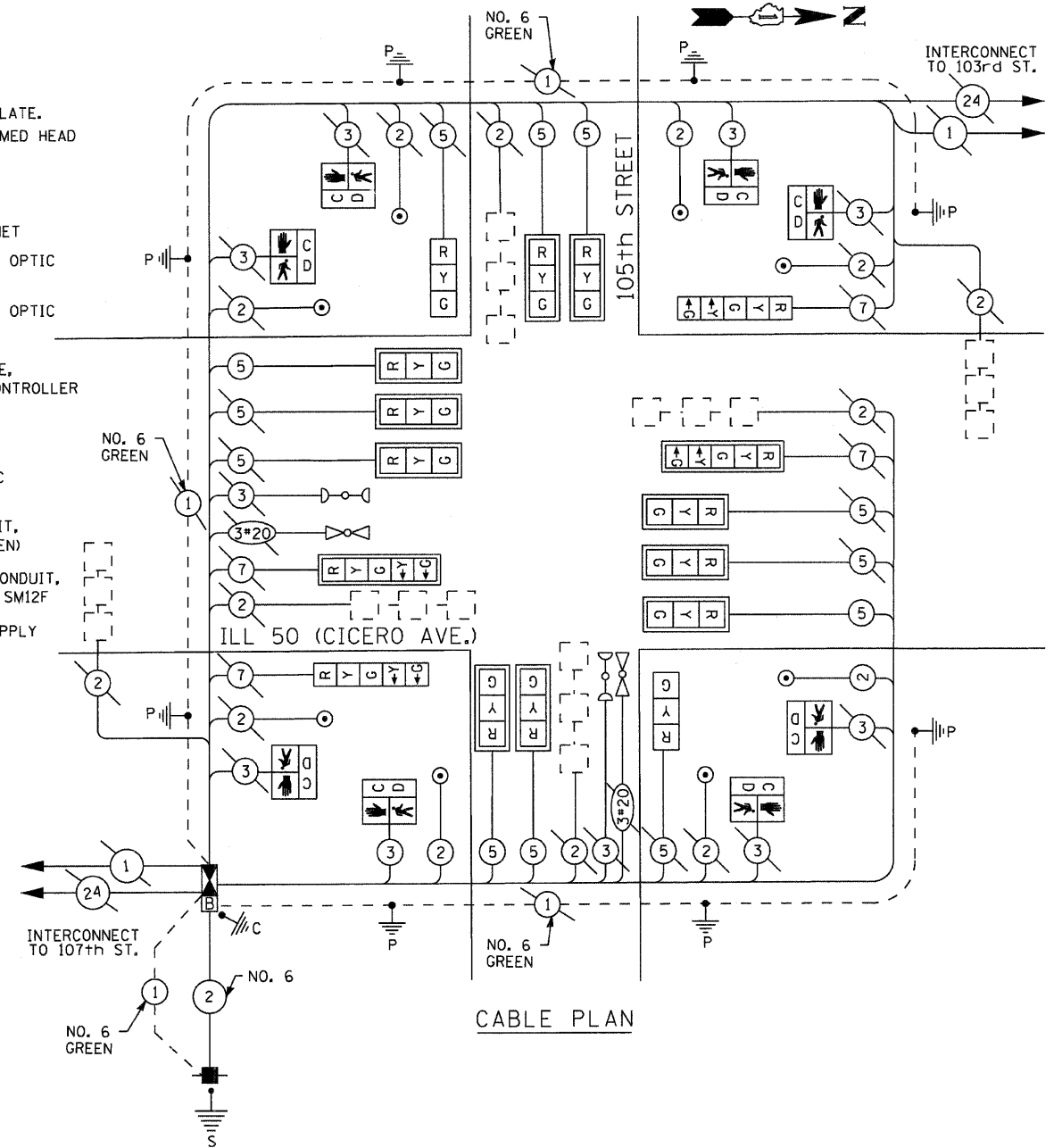
**EMERGENCY VEHICLE PREEMPTION SEQUENCE**

**CABLE PLAN LEGEND**

- |                 |                 |                 |                 |
|-----------------|-----------------|-----------------|-----------------|
| <b>EXISTING</b> | <b>PROPOSED</b> | <b>EXISTING</b> | <b>PROPOSED</b> |
|                 |                 |                 |                 |
|                 |                 |                 |                 |
|                 |                 |                 |                 |
|                 |                 |                 |                 |
|                 |                 |                 |                 |
|                 |                 |                 |                 |
|                 |                 |                 |                 |
|                 |                 |                 |                 |
|                 |                 |                 |                 |
|                 |                 |                 |                 |
|                 |                 |                 |                 |
|                 |                 |                 |                 |
|                 |                 |                 |                 |
|                 |                 |                 |                 |

**SCHEDULE OF QUANTITIES**

ITEM	UNIT	QUANTITY
MAINTENANCE OF EXISTING TRAFFIC SIGNAL INSTALLATION	EACH	1
CONDUIT PUSHED, 2 1/2" DIA., GALVANIZED STEEL	FOOT	38
ELECTRIC CABLE IN CONDUIT, SIGNAL NO. 14 2C	FOOT	394
ELECTRIC CABLE IN CONDUIT, SIGNAL NO. 14 3C	FOOT	282.5
ELECTRIC CABLE IN CONDUIT, SIGNAL NO. 14 5C	FOOT	1036.5
DRILL EXISTING HANDHOLE	EACH	3
STEEL MAST ARM ASSEMBLY AND POLE, 20 FT.	EACH	1
STEEL MAST ARM ASSEMBLY AND POLE, 22 FT.	EACH	1
CONCRETE FOUNDATION, TYPE E	FOOT	20
SIGNAL HEAD, L.E.D., 1-FACE, 3-SECTION, BRACKET MOUNTED	EACH	2
SIGNAL HEAD, L.E.D., 1-FACE, 3-SECTION, MAST ARM MOUNTED	EACH	10
SIGNAL HEAD, L.E.D., 1-FACE, 5-SECTION, BRACKET MOUNTED	EACH	2
SIGNAL HEAD, L.E.D., 1-FACE, 5-SECTION, MAST ARM MOUNTED	EACH	2
PEDESTRIAN SIGNAL HEAD, L.E.D., 1-FACE, BRACKET MOUNTED WITH COUNTDOWN TIMER	EACH	8
TRAFFIC SIGNAL BACKPLATE, LOUVERED, ALUMINUM	EACH	12
FULLY ACTUATED CONTROLLER AND TYPE IV CABINET, SPECIAL UNINTERRUPTABLE POWER SUPPLY	EACH	1
PEDESTRIAN PUSH-BUTTON	EACH	1
PEDESTRIAN PUSH-BUTTON POST, GALVANIZED STEEL, TYPE II	EACH	8
REMOVE EXISTING TRAFFIC SIGNAL EQUIPMENT	EACH	1
REMOVE EXISTING CONCRETE FOUNDATION	EACH	1
TEMPORARY SIGNAL POST, COMPLETE	EACH	2
INDUCTIVE LOOP DETECTOR	EACH	1
SERVICE INSTALLATION, POLE MOUNT	EACH	6
ELECTRIC CABLE IN CONDUIT, GROUNDING, NO.6 1C	FOOT	24.5
ELECTRIC CABLE IN CONDUIT, NO. 6 2C	FOOT	24.5
TRANSCEIVER - FIBER OPTIC	EACH	1



**CABLE PLAN**

I. D. O. T. TRAFFIC SIGNAL INSTALLATION ELECTRICAL SERVICE REQUIREMENTS					
TYPE	NO. LAMPS	WATTAGE		% OPERATIONS	TOTAL
		INCAND.	LED		
SIGNAL (RED)	16	135	17	0.50	136
(YELLOW)	16	135	25	0.25	100
(GREEN)	16	135	15	0.25	60
ARROW	8	135	12	0.10	9.6
PED. SIGNAL	8	90	25	1.00	200
CONTROLLER	1	100	100	1.00	100
ILLUM. SIGN				0.05	
TOTAL =					605.6

ENERGY COSTS- BILLED TO: IDOT DISTRICT 1  
201 WEST CENTER COURT  
SCHAMBURG, IL 60196-1096

ENERGY SUPPLY - CONTACT MILTON RAY  
PHONE (708) 235-2315  
COMPANY COMED

FOUNDATION DEPTH	DEPTH (FT.)	CABLE SLACK (FT.)	VERTICAL (FT.)
TYPE A - POST	4	HANDHOLE	6.5
D - CONTOLLER	4	DOUBLE HANDHOLE	13
E - MAST ARM POLE		SIGNAL POST	2
24"	10	CONTOLLER CAB.	1
30"	15	FIBER OPTIC	13
		ELECTRICAL SERVICE	1
		GROUND CABLE	1
		ALL FOUNDATIONS	3.5
		MAST ARM (L) POLE =20' +L-2	
		BRACKET MOUNTED	13
		PED. PUSHBUTTON	4
		ELECTRICAL SERVICE	13.5
		SERVICE TO GROUND	13.5
		POSTMOUNTED	6

THE TRAFFIC SIGNAL CONTROL EQUIPMENT FOR THIS PROJECT SHALL BE "ECONOLITE" TO MATCH THE EXISTING ADJACENT SYSTEM