

PROJECT ENGINEER: MAUREEN ADDIS (309) 671-3454

DESIGNER: ELIAS ELDERZI (309) 671-3459

INDEX OF SHEETS

- 1. Cover Sheet
- 2-3. Commitments, General Notes, & Job Specific Notes
- 4-5. Summary of Quantities
- 6-12. Typical Sections
- 13-20. Schedule of Quantities
- 21. Line Diagram
- 22-23. Existing and Removal Sheets
- 24-25. Plan and Profile Sheets
- 26-29. Staging Plan
- 30. Temporary Signal Detail
- 31-32. Erosion Control Plan
- 33-44. Sideroad Details
- 45-50. Culvert Details
- 51. Existing Culvert Detail
- 52. Rumble Strip, Sideroad, & Mailbox Turnout Detail
- 53-67. District CADD Standards
- 68-76. Cross Sections

LIST OF STANDARDS

- 280001-04701006-03
- 442201-03701011-02
- 515001-03701201-03
- 630001-08701301-03
- 630101-08701306-02
- 630301-05701311-03
- 635001-01701321-10
- 635006-03701336-05
- 666001-01701901-01
- 667101-01780001-02
- 701001-02781001-03

DESIGN DESIGNATION

ADT = 1,670
 MU = 4.2%
 SU = 3.3%

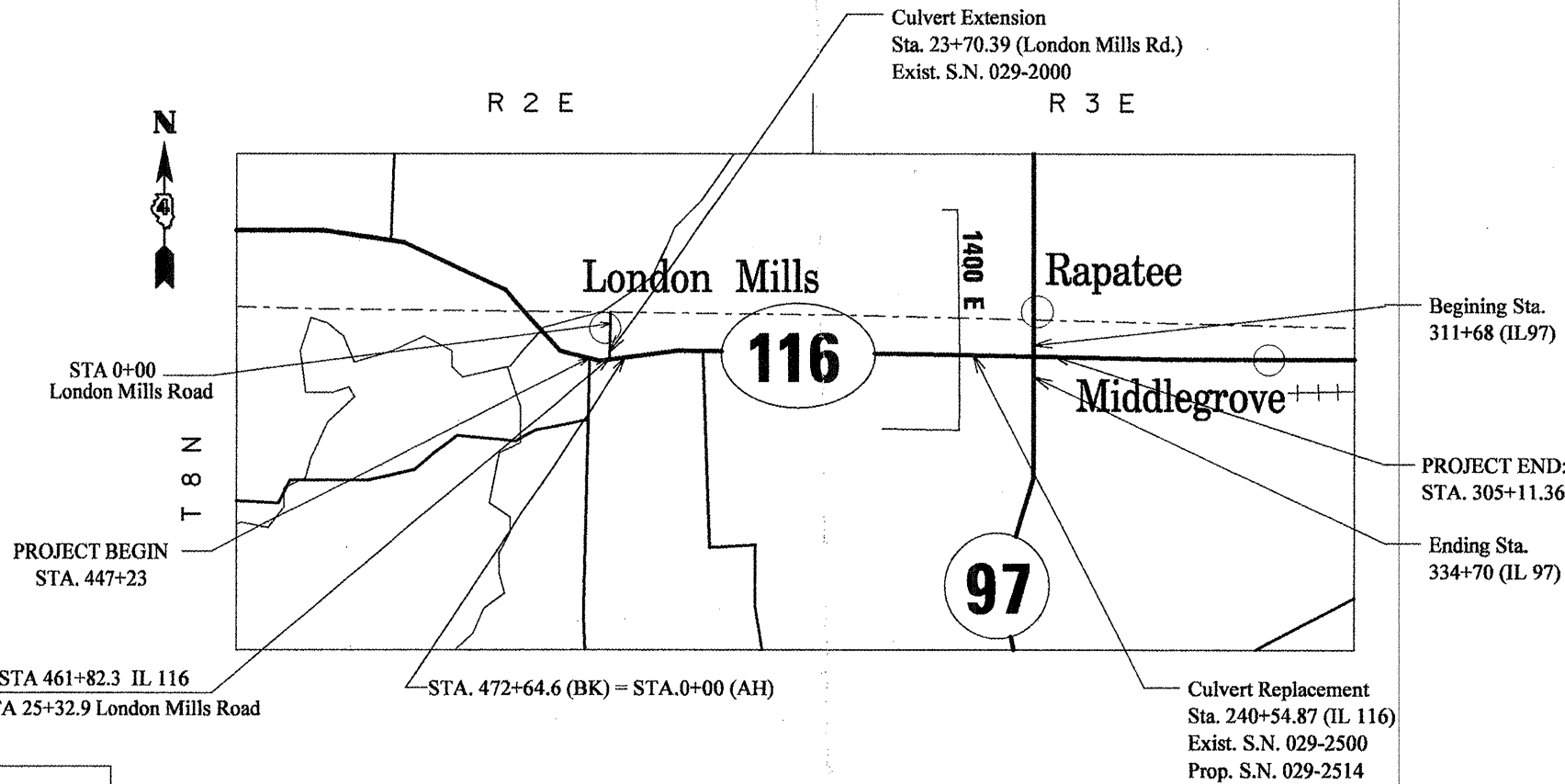
Bituminous QC/QA

J.U.L.I.E.
 JOINT UTILITY LOCATION INFORMATION FOR EXCAVATION
 1-800-892-0123

CONTRACT NO. 68353
 CATALOG NO. 032751-00D

STATE OF ILLINOIS
 DEPARTMENT OF TRANSPORTATION
 DIVISION OF HIGHWAYS
**PLANS FOR PROPOSED
 HIGHWAY IMPROVEMENT**

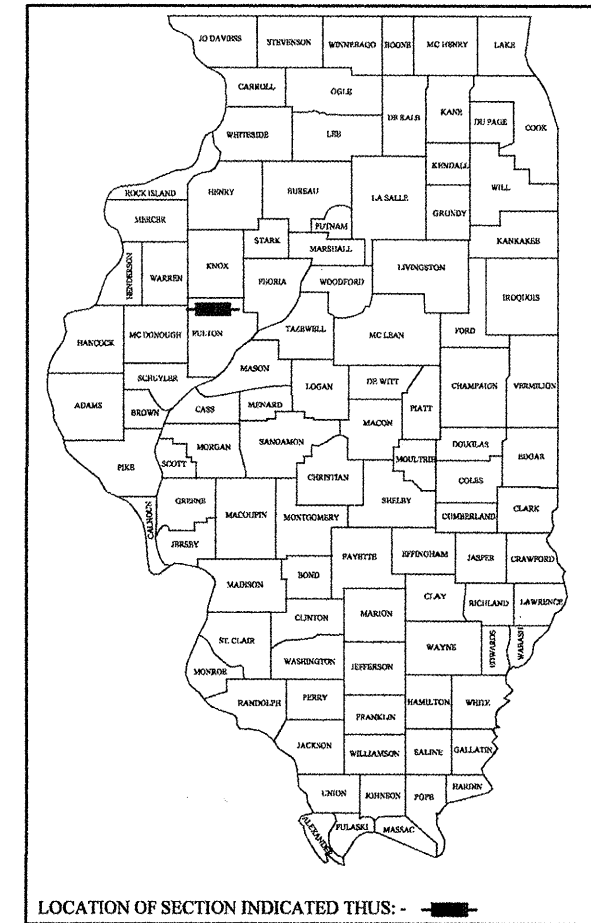
F.A.P. 665 (IL ROUTE 116)
 SECTION 142 RS-6; 143[RS-4, (C-8)BR]; 142X
 PROJECT F-0665(011)
 FULTON COUNTY
 C-94-056-03



GROSS LENGTH OF IMPROVEMENT = 37,902.86FT (7.18 MILES)
 NET LENGTH OF IMPROVEMENT = 37,902.86 FT (7.18 MILES)

ROUTE	SECTION	COUNTY	TOTAL SHEETS	SHEET NO.
F.A.P. 665	142 RS-6; 143RS-4	FULTON	76	1
MKD. IL 116				

D-94-048-03



DESCRIPTION OF THE PROJECT:

This project consist of 7.18 miles of cold milling and HMA resurfacing, class D patching, a culvert replacement, and a culvert extension.

STATE OF ILLINOIS
 DEPARTMENT OF TRANSPORTATION
 DIVISION OF HIGHWAYS

SUBMITTED *Jan 29 20 09*

[Signature]
 DEPUTY DIRECTOR OF HIGHWAYS, REGION ENGINEER

March 26, 20 09
Charles J. Orgerelli
 ENGINEER OF DESIGN AND ENVIRONMENT

March 27, 20 09
Christine M. Reed
 DIRECTOR OF HIGHWAYS, CHIEF ENGINEER

**PRINTED BY THE AUTHORITY
 OF THE STATE OF ILLINOIS**